

## STUDIO-HISTORIC PRESERVATION

## WOODLAWN CEMETERY : MARY KRANICH

YASONG.ZHOU

SEPT.28.2018

Kranich's mausoleum is located at No. 99 Plot, which is at the intersection of Birch Avenue and Hawthorn Avenue in the middle of the Woodlawn Cemetery, in New York City, NY. (Fig.1) In honor of her husband, Mary Kranich commissioned Leland Hall & Company to design and build the mausoleum in 1905. There are seven catacombs in the mausoleum and six tombstones outside.

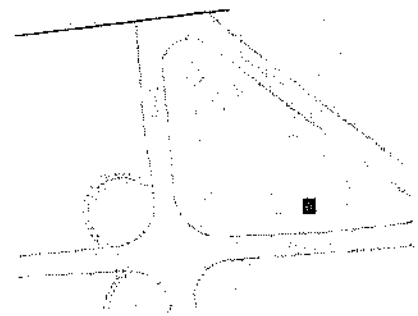


Fig.1 site plan

Mr. Kranich was born in 1833 in Gross Breitenbach, Germany. He came to America when he was 19 years old and started to work at his trade of cabinet maker for Steinway. In 1864 he started in business for himself, and in 1868 he formed a partnership with Jacques Bach. This partnership, under the name of Kranich & Bach, became one of the best-known piano manufacturing concerns in the country. (Fig.2) Kranich & Bach was awarded many patents throughout the 19th & 20th Centuries, many of which are considered well ahead of their time today. In the early 20th Century Kranich & Bach produced a line of very small baby grand pianos called the 'Grandette'. These pianos were designed to get the most tone and volume possible from a very small instrument. The Grandette was quite popular and sold very well.



Fig.2 Kranich &amp; Bach

By 1891, Kranich & Bach claimed to have built and sold as many as 25,000 pianos nationwide<sup>1</sup>. Kranich was known for building extremely well made, expensive pianos, and also for their lavish use of exotic woods and extravagant cabinet styles, as well as their superior tone and construction.

Hellmuth and Mary had 7 sons (Frederick Kranich, Alvin Kranich, Albert Kranich, Helmuth Kranich, Charles Kranich, Augustus Kranich and Victor V. Kranich) and 2 daughters (Louisa Kranich and Gertrude Kranich)<sup>2</sup>. (Fig.3) They first lived in midtown, then moved to the UES because of the company's rapid growth.

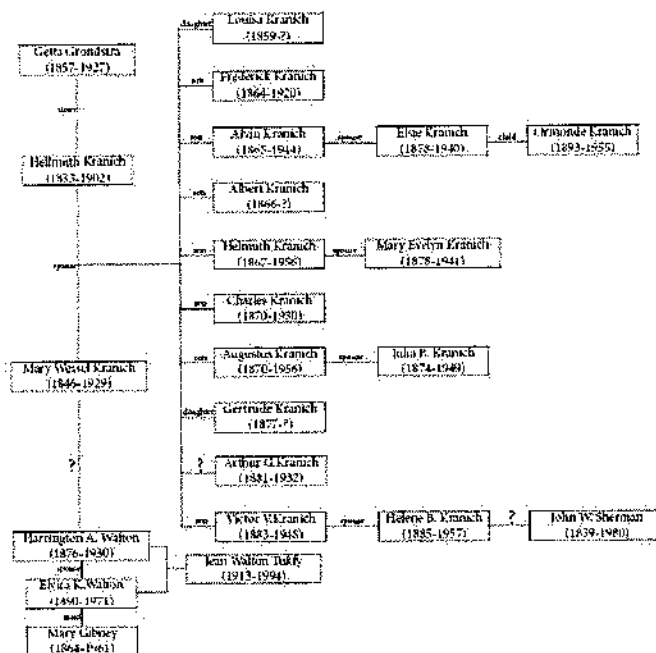


Fig.3 Kranich Family

With his death and the depression of the early 20<sup>th</sup> century, Mary and family moved to apartment in UWS<sup>3</sup>.

The entire mausoleum is one story high without a basement. The main entrance of the mausoleum faces west, with a 13-foot path and two flower pots at the entrance. The mausoleum adopts a symmetrical layout and is symmetrical from the center line. Passing through the path, from the open road space to the private space of the sacrifice. This unique design reflects the wealth of the mausoleum owner on the one hand, and the understanding of the sacrificial behavior of the architect based on professionalism on the other hand, which makes the mausoleum more personal<sup>4</sup>. Take the two steps and you will enter the

<sup>1</sup> "Antique Piano Shop," last modified Sept 11, 2018, <https://antiquepianoshop.com/online-museum/kranich-bach/>, Sept. 20, 2018

<sup>2</sup> Death Records, New York Times, July 5, 1902

<sup>3</sup> U.S. Federal Census Collection, 1860-1930

<sup>4</sup> Aitken, Robert, 1863-1999. "Woodlawn Cemetery records: Drawer 2.3, Folder 29"

space under the portico (the space in front of the door to the column). This space is a transition between indoor and outdoor spaces, and it also provides a place for people to organize their moods. The four Ionic columns support the heavy roof, the flowers, wheat, ribbons and other patterns on the frieze decorated the facade of the mausoleum. The small flowers on the bronze door also have this effect. (Fig.4) When you push the door, the first to introduce the eye is the beautiful glass window, the window depicts the scene of spring wheat in the field. This echoes the wheat sculpture on the frieze of the mausoleum. Unlike the rough granite out of the mausoleum the interior has a delicate and expensive imported Italian marble. Four catacombs are arranged on opposite sides of the window. The catacomb shelves are made of Pennsylvania slate<sup>5</sup>. There are two bronze ring handles in the middle of the catacombs, which are used for easy opening and storage. The ground of the building uses "4 black- 2 white-1 black" mosaic ceramic floor tiles, which is very characteristic.

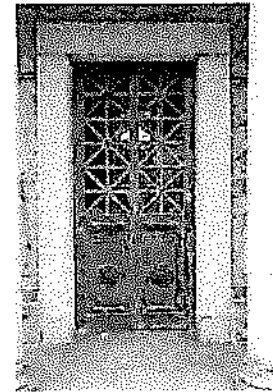


Fig.4 Bronze door

Due to the damage of the roof stone, the mortar between the stones was washed away by the rain, which destroyed the tissue drainage of the mausoleum itself. (Fig.5) Rainwater will unorganized and even flow into the room along the gap of the stone. We can clearly see that the damaged side of the roof stone on the mausoleum exterior is darker than the undamaged side, and the bottom granite is subject to deeper salt damage

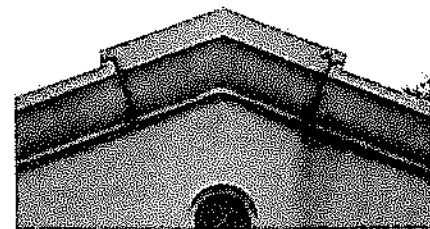


Fig.5 The damage of roof stone.

than elsewhere. Inside the mausoleum, rainwater accumulates on the ceiling and cannot be quickly discharged. Some rainwater penetrates the mortar and granite into the room. The architrave on the north side of the roof is significantly darker than on the south side, which phenomenon that confirms

<sup>5</sup> Aitken, Robert, 1863-1999. "Woodlawn Cemetery records: major monument files Box10, Folder 39"

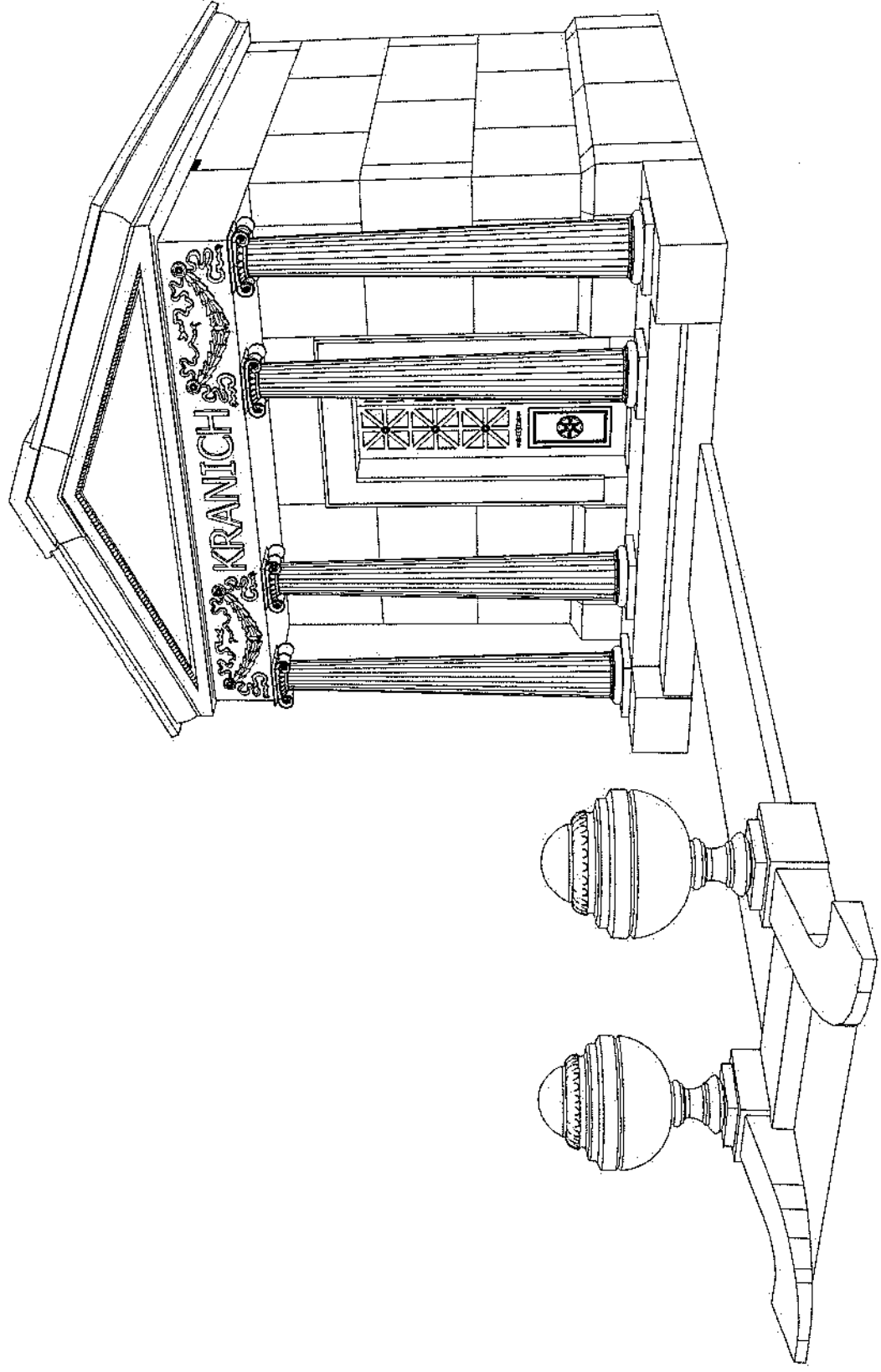
the previous statement. This makes the interior of the mausoleum increase in moisture. Since the door of mausoleum is rarely opened, the inside and outside air does not change, so there is often a musty smell when entering the room, which is more obvious when the rain is clear. Mosaic ceramic floors also have biological damage such as cellars. In addition, between the third and fourth layers of the catacombs on the north side, the marble showed signs of yellowing. Since this phenomenon only occurs here, it is speculated that the iron mineral inside the marble may be oxidized by oxygen in the air and combined with water to form yellow iron hydroxide.

FALL 2018 HISTORIC PRESERVATION STUDIO

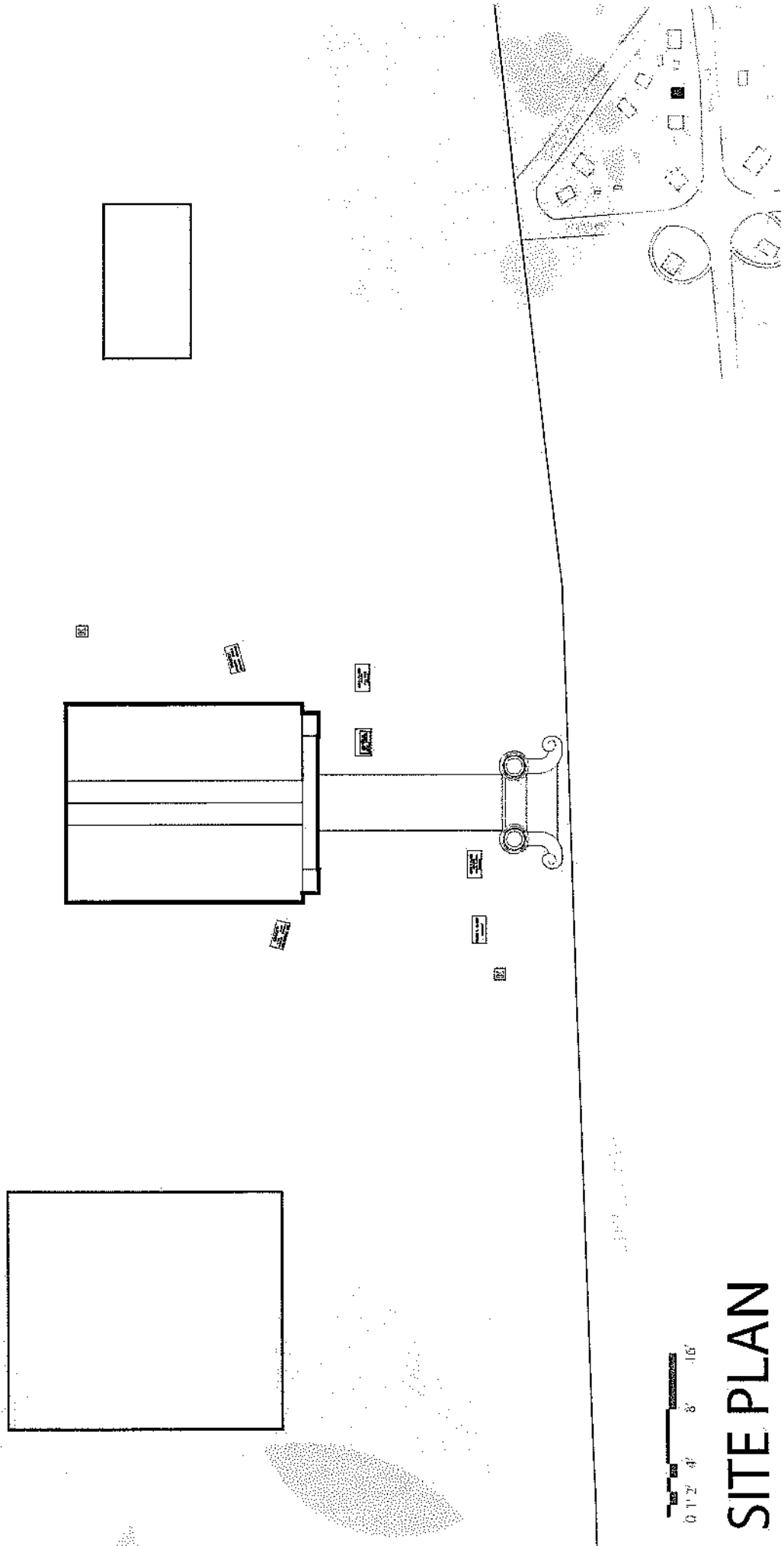
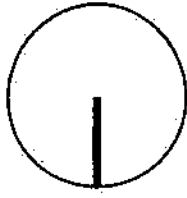
SOCIETY : ANDREW ODLAKI, KIM YAO & CLAUDIA NAVENASH

WOODLAWN CEMETERY : MARY KRANICH

YASONS ZHOU  
SEPTEMBER 20, 2018



FALL 2018 HISTORIC PRESERVATION STUDIO  
FACULTY : ANDREW DOLKART, KIM YAO & CLAUDIA KAVENAGH  
WOODLAWN CEMETERY : MARY KRANICH  
YASONG ZHOU  
SEPTEMBER 20, 2018



SITE PLAN

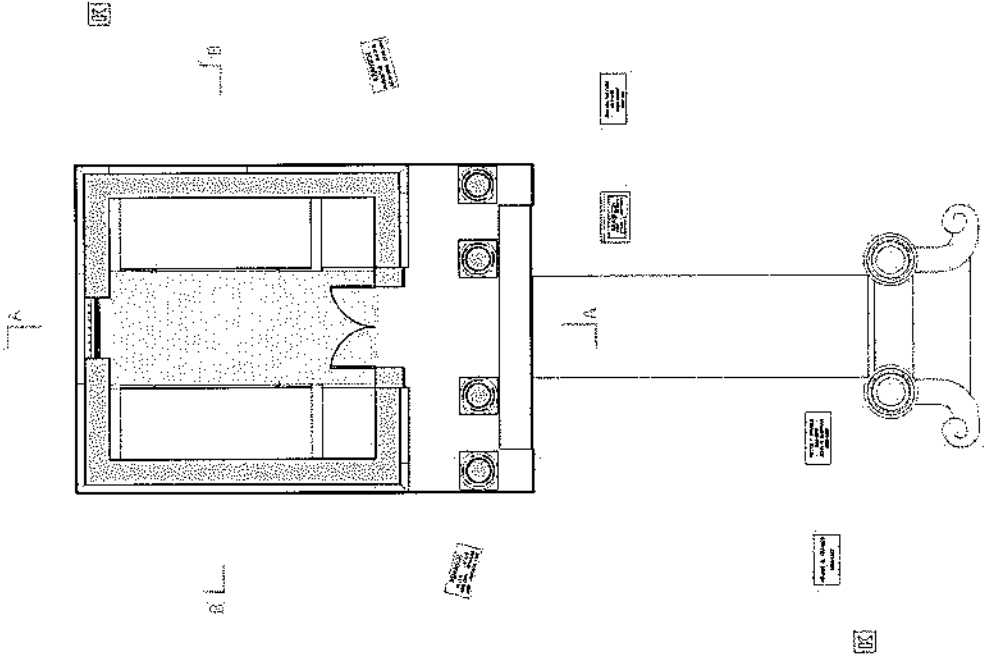
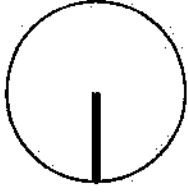
FALL 2018 HISTORIC PRESERVATION STUDIO

FACULTY: ANDREW DOLKART, KIM YAO & CLAUDIA KAVENAGH

WOODLAWN CEMETERY : MARY KRANICH

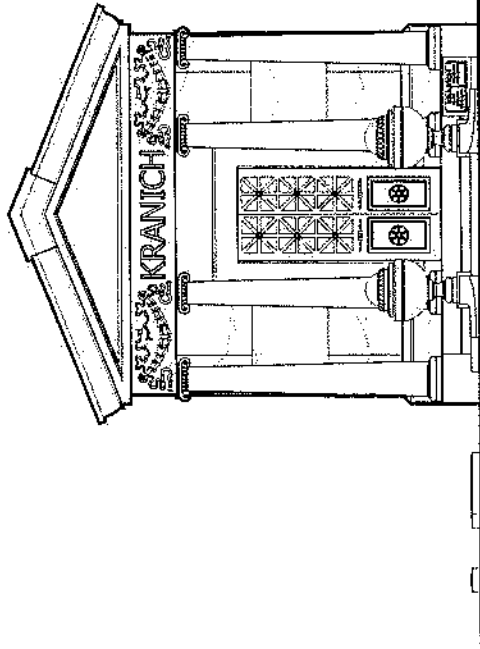
YASONG ZHOU

SEPTEMBER 23, 2018

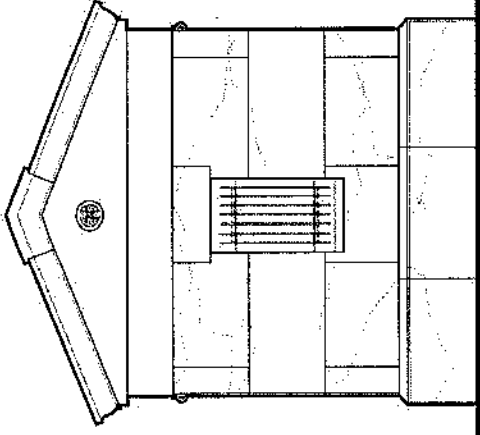


PLAN

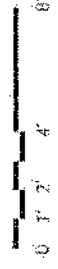
FALL 2018 HISTORIC PRESERVATION STUDIO  
FACULTY: ANDREW DORR, KURT, KIM YAO & LAURIE KAVENAGH  
WOODLAWN CEMETERY : MARY KRANICH  
YASONG ZHOU  
SEPTEMBER 20, 2018



WEST ELEVATION



EAST ELEVATION





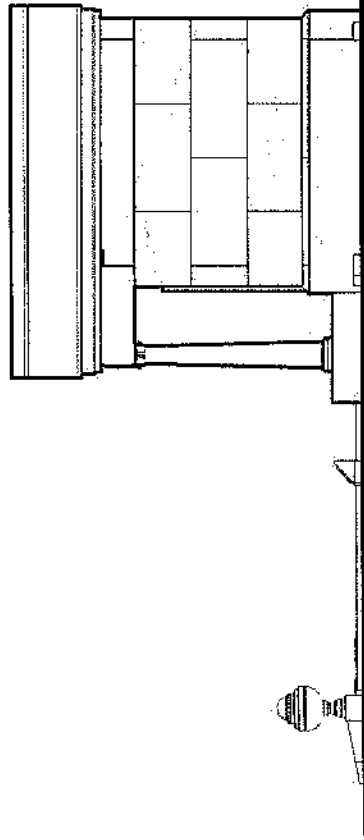
FALL 2018 HISTORIC PRESERVATION STUDIO

FACILITY : ANDREW DOLKART, YIM YAO & CLAUDIA BAVENAGH

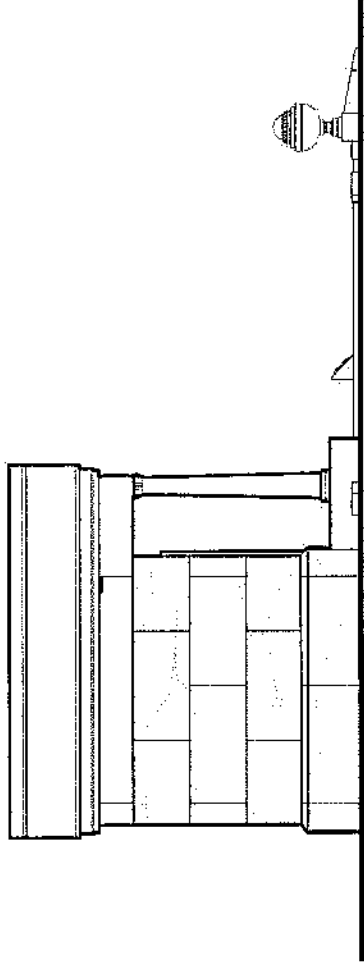
WOODLAWN CEMETERY : MARY KRANICH

WASONG ZHOU

SEPTEMBER 16, 2018



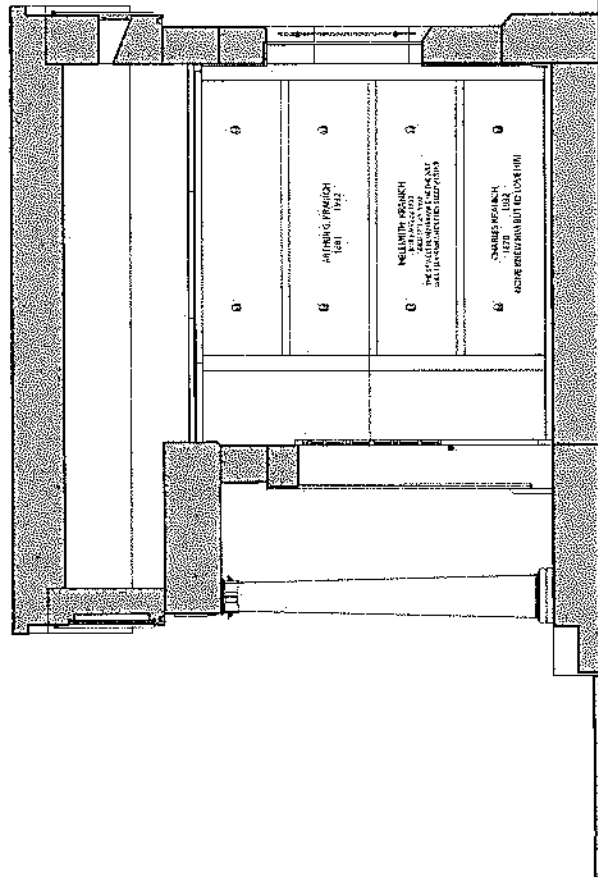
SOUTH ELEVATION



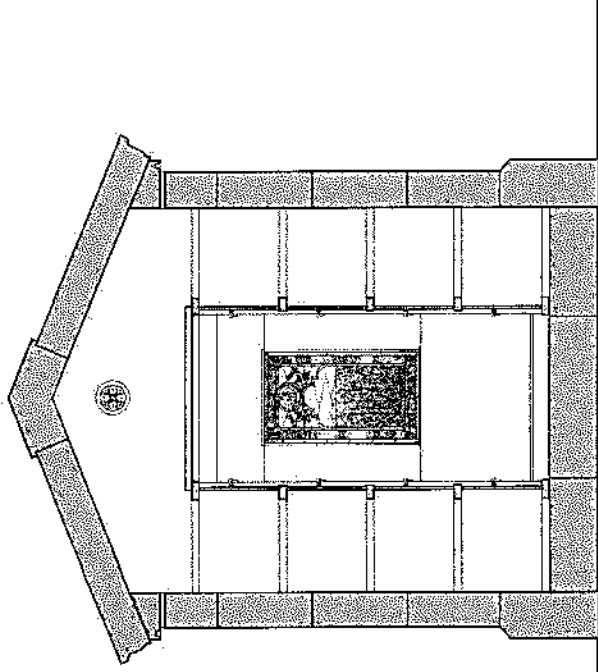
NORTH ELEVATION



FALL 2018 HISTORIC PRESERVATION STUDIO  
 FACILITY : ANDREW DOLKART, KIM YAO & CLAUDIA KAVENAGH  
 WOODLAWN CEMETERY : MARY KRANICH  
 YONGS ZHOU  
 SEPTEMBER 28, 2018



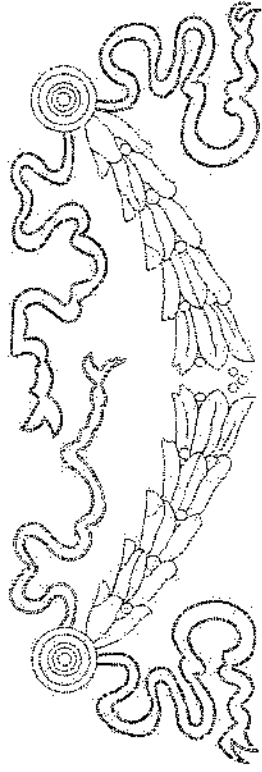
A-A SECTION



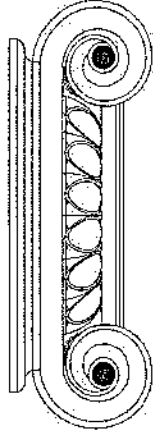
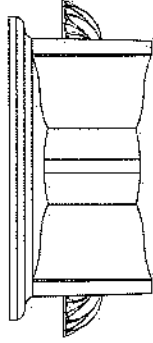
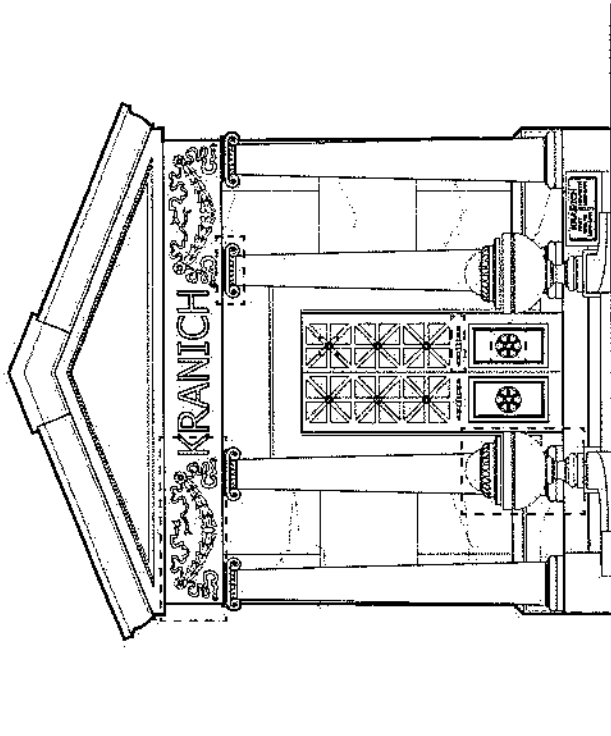
B-B SECTION



FALL 2018 HISTORIC PRESERVATION STUDIO  
 FACULTY : ANDREW DOLKART, KIM YAO & CLAUDIA KAVENHAGEN  
 WOODLAWN CEMETERY : MARY KRANICH  
 TASHONG ZHOU  
 SEPTEMBER 25, 2018



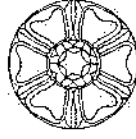
0 1' 2" 4" 8" 12"



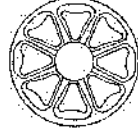
0 1' 2" 4" 8" 12"



0 1' 2" 4" 8" 12"



0 1' 2" 4" 8" 12"



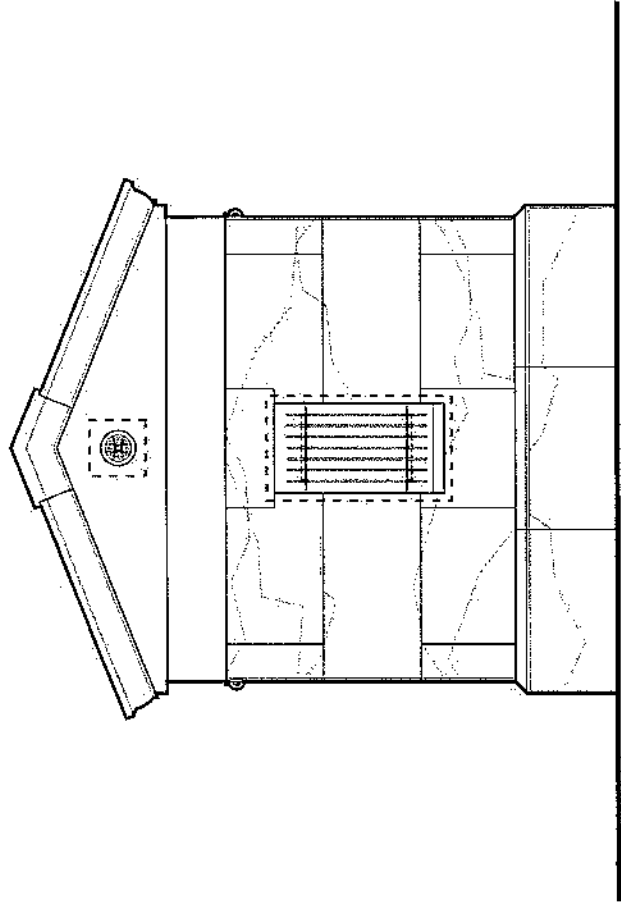
0 1' 2" 4" 8" 12"

0 1' 2" 4" 8" 12"

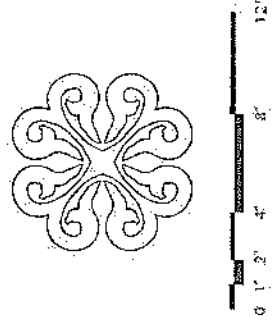
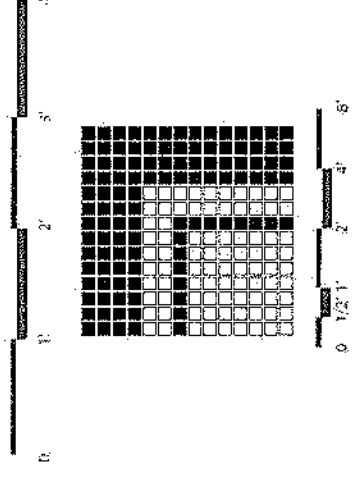
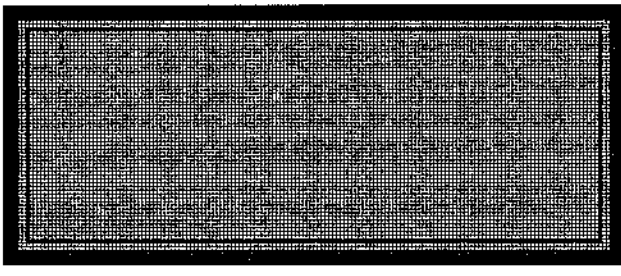
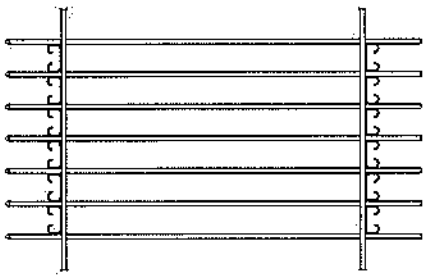
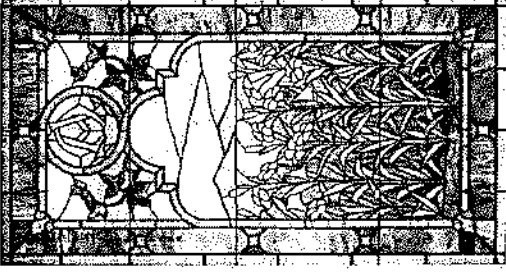
WEST ELEVATION

DETAILS

FALL 2018 HISTORIC PRESERVATION STUDIO  
 FACULTY : ANDREW DOLKART, KIM YAO & CLAUDIA KAVELNAGH  
**WOODLAWN CEMETERY : MARY KRANICH**  
 YASONG ZHOU  
 SEPTEMBER 28, 2018



EAST ELEVATION  
 DETAILS



# FALL 2018 HISTORIC PRESERVATION STUDIO

FACULTY: ANDREW DOLBART, KIM YAO & CLAUDIA KAYENRUCHT

## WOODLAWN CEMETERY : MARY KRANICH

SEPTEMBER 28, 2018

WASONG ZHOU

