

GRADUATION

PORTFOLIO

GSAPP 2025

YANGYANG AI

ADAPT
FOR
FUTURE

TABLE

ADAPT	#1
ADAPT	#2
ADAPT	#3
ADAPT	#4

ADAPT #1 INFRASTRUCTURE

WE THINK THAT ADAPTATION IS NOT INHERENTLY ORDERLY—IT IS OFTEN UNRULY, IMPULSIVE, AND BEYOND CONTROL. ARCHITECTURE MUST NOT SEEK TO TAME THIS VOLATILITY, BUT RATHER ENGAGE WITH IT DIRECTLY. TRUE RESPONSIVENESS LIES NOT IN GRAND REINVENTION, BUT IN PRECISE, INFRASTRUCTURAL SHIFTS THAT ALLOW OBSOLETE CONTEXTS TO REGAIN AGENCY. THROUGH MINIMAL YET INTENTIONAL UPGRADES, THE OUTDATED BECOMES FERTILE GROUND FOR NEW URBAN POSSIBILITIES.

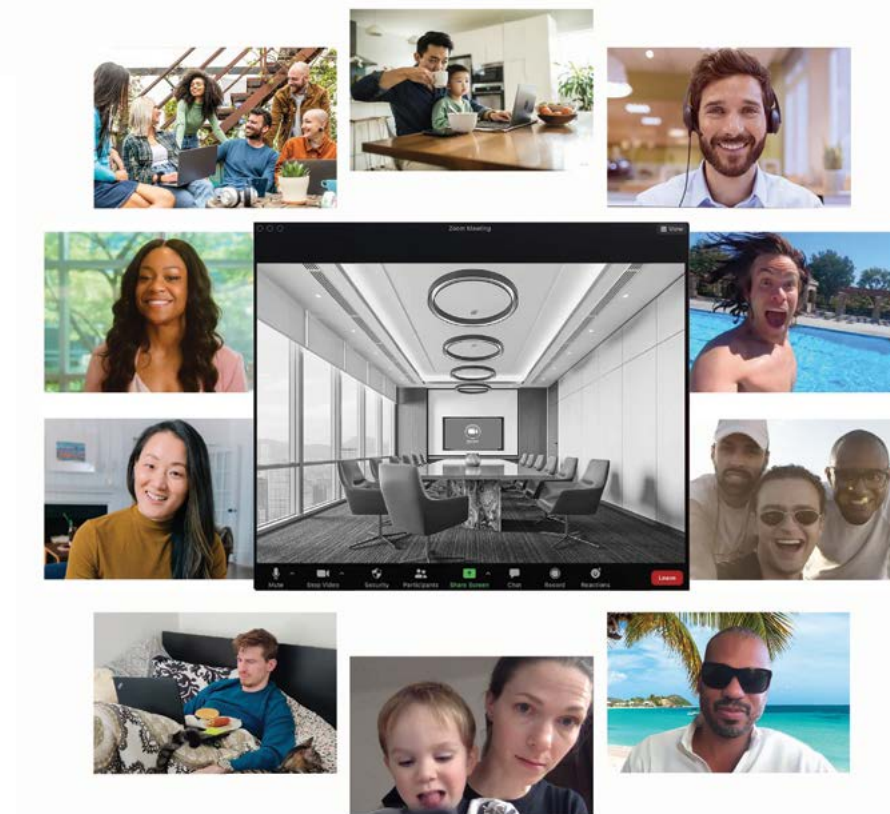


COLLAGE CREDIT TO TEAMMATE: ANGELA CHIESA



SHIFT IN WORKING CULTURE & DEMAND

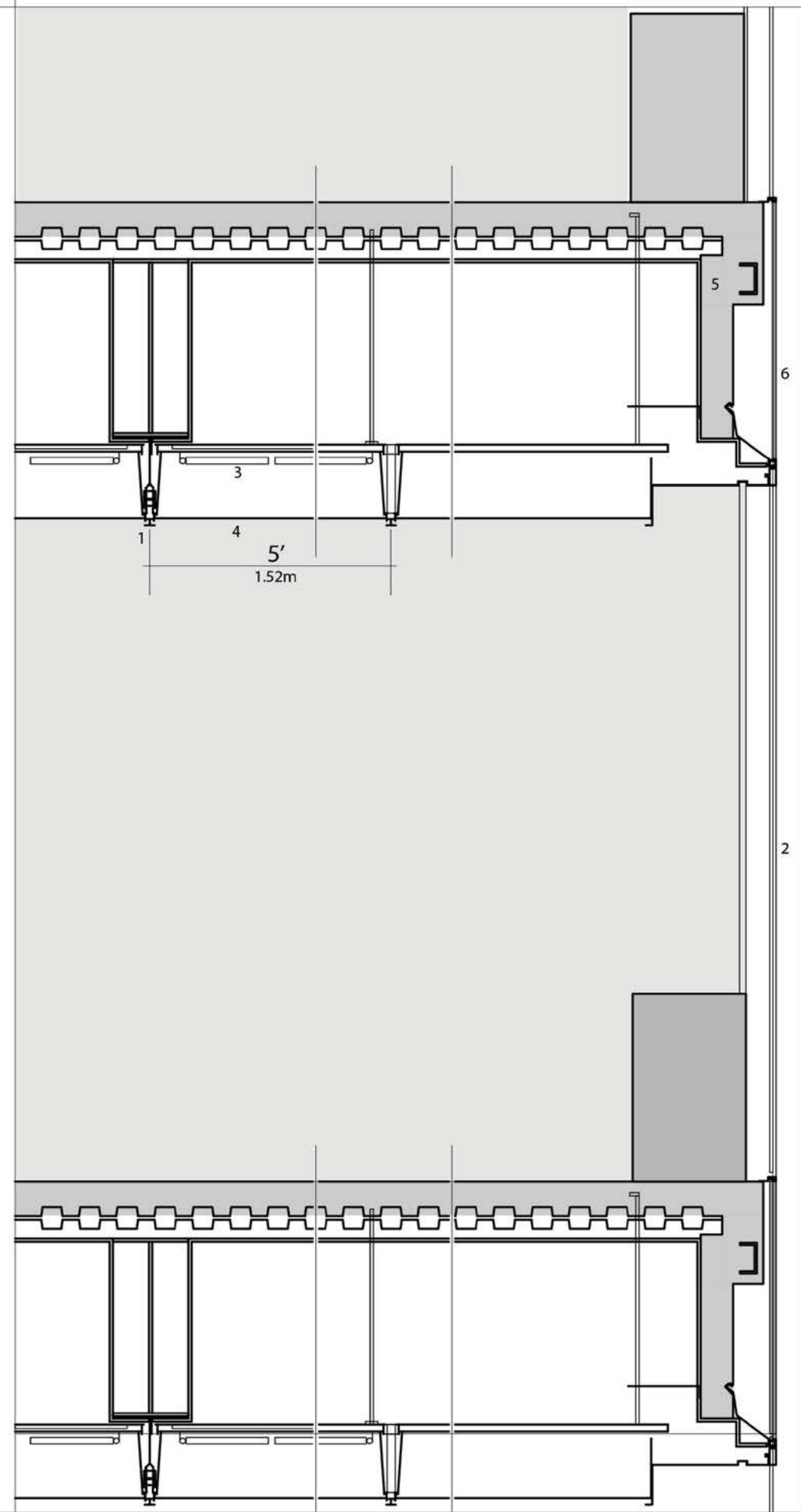
DEMOLITION



ALTERNATIVE?

ADAPT?

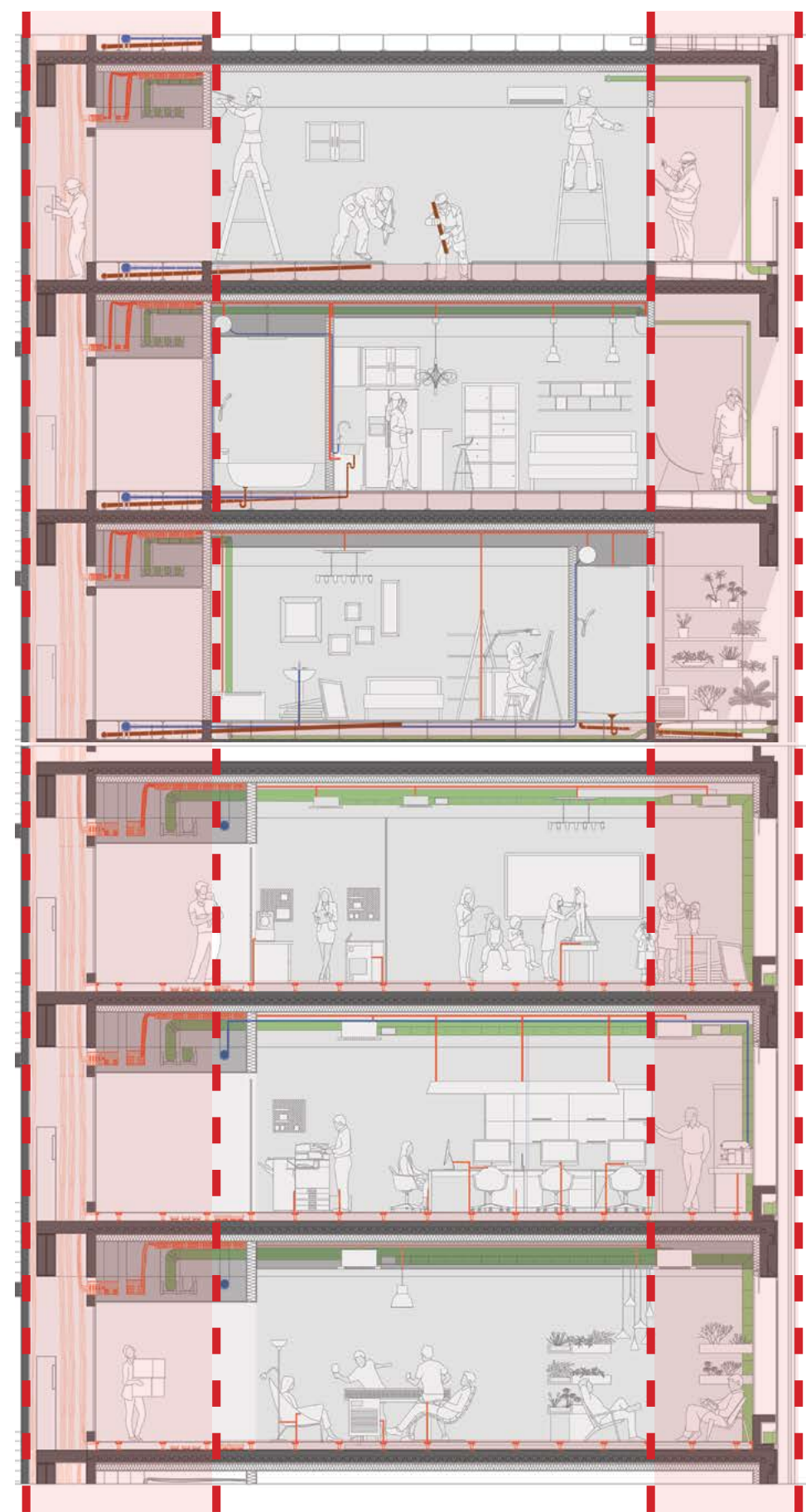
EXISTED ASSEMBLY



CITY IN THE TOWER

PREPARE FOR MANY TYPES

INTERVENTION & ADAPTATION



MECH
DYNANMIZER

HUB
DOMESTIC

DYNANMIZER

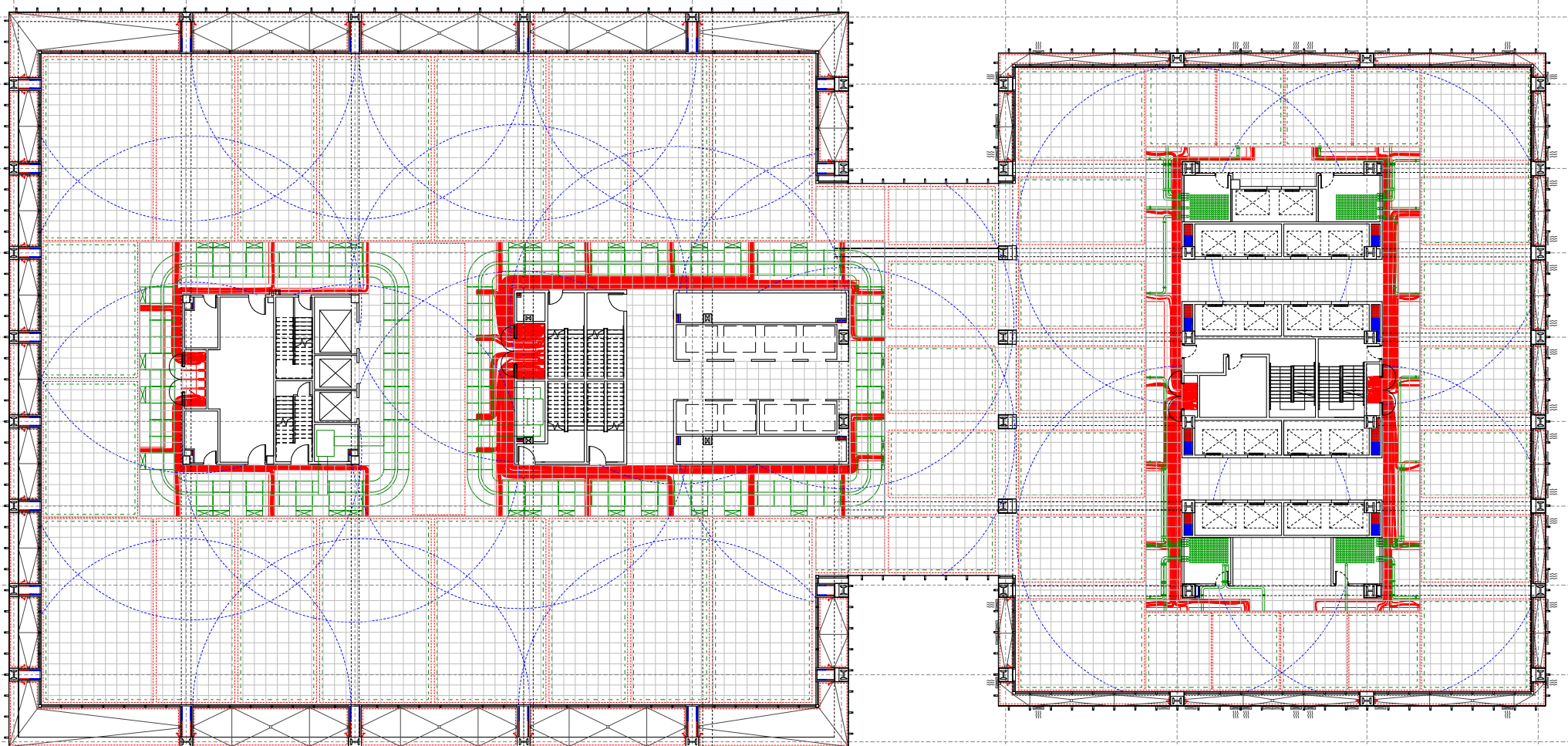
HUB
CREATIVE

DYNANMIZER

HUB
PODIUM

DYNANMIZER

SYSTEM

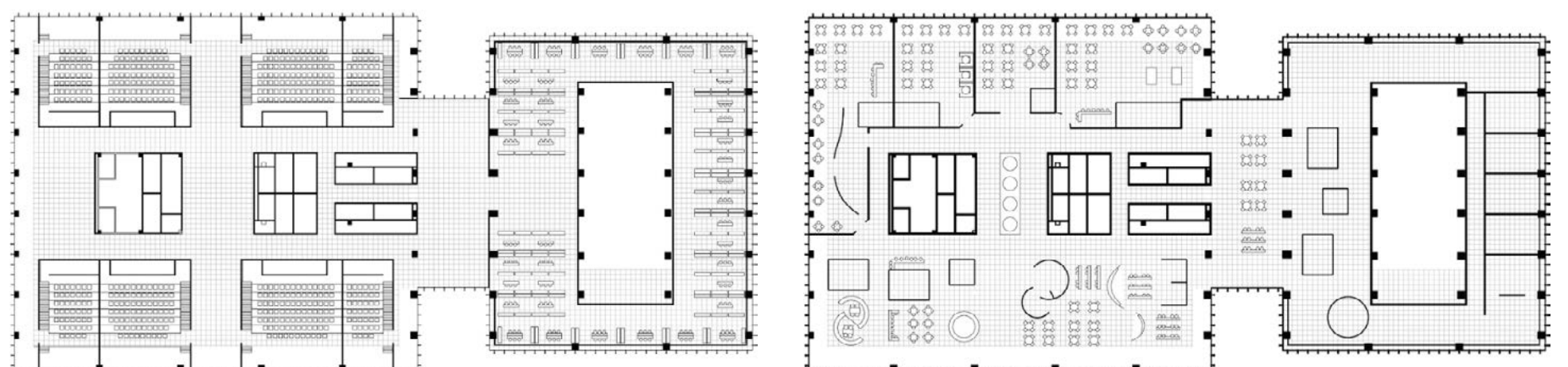
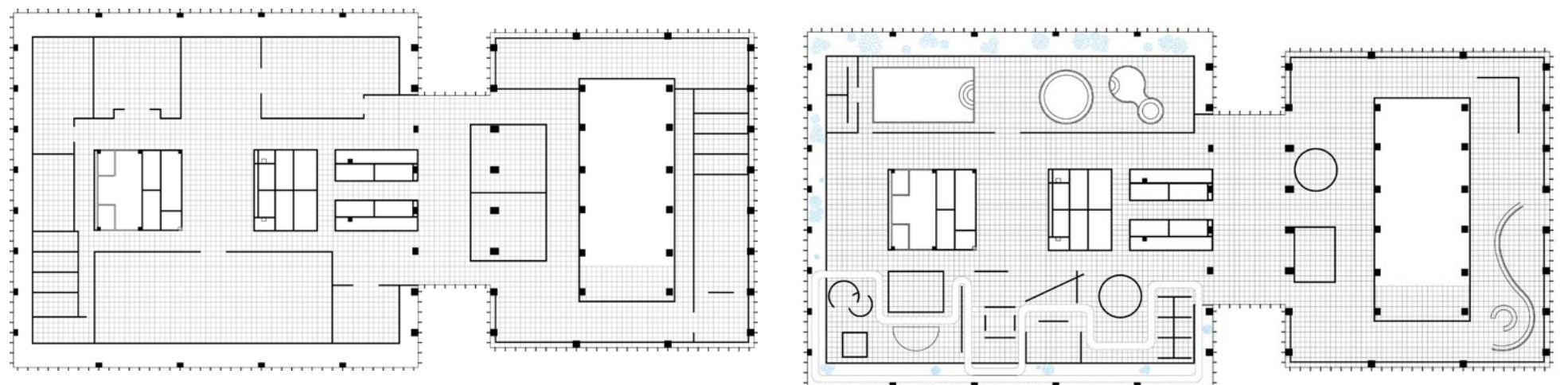
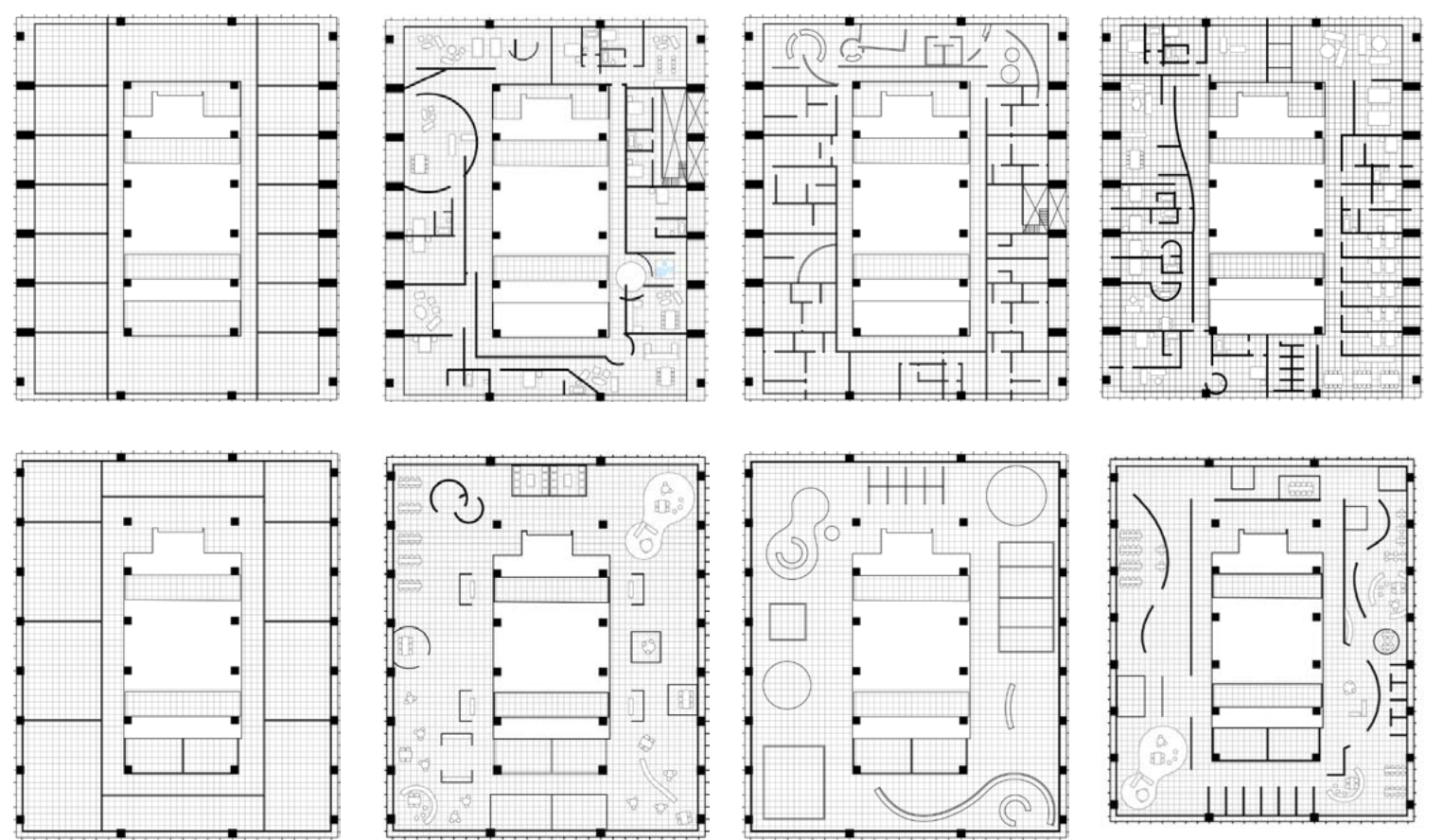
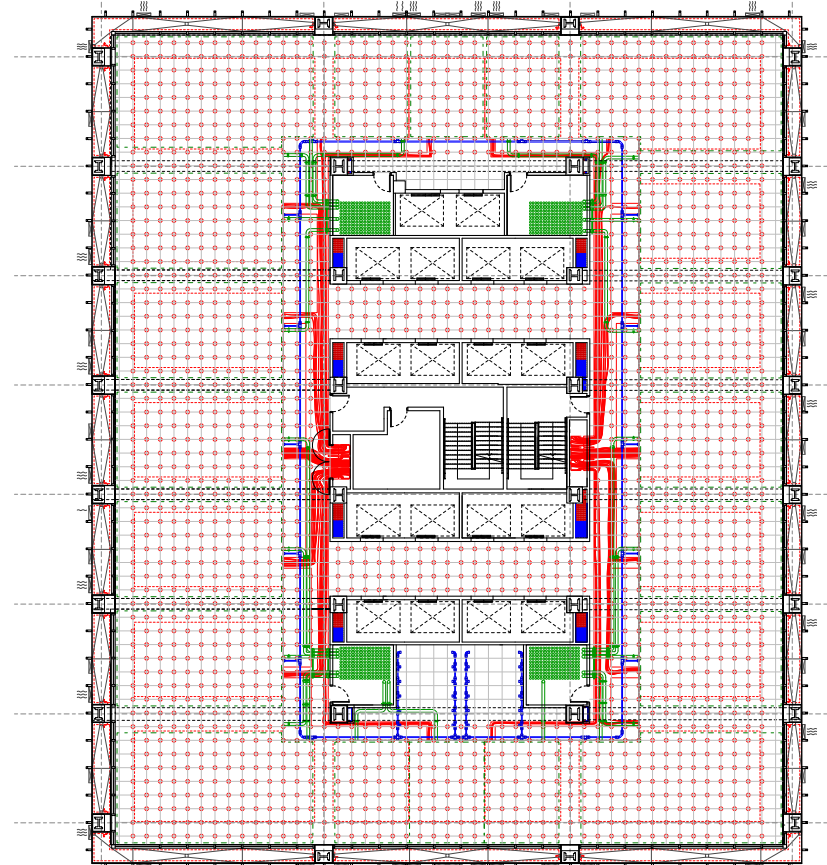
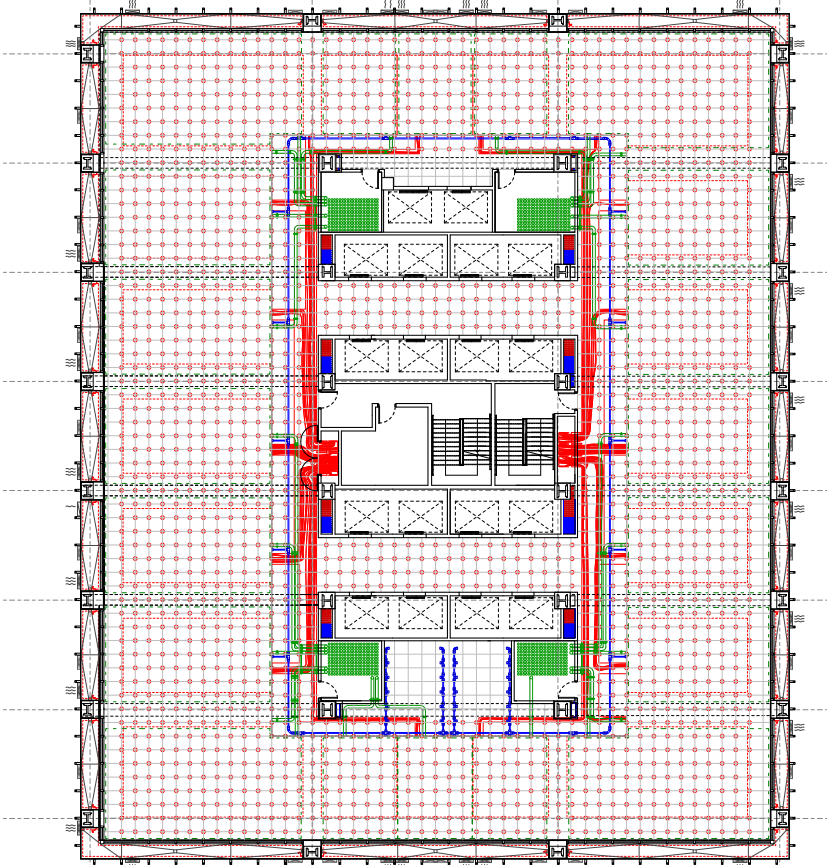


SYSTEM PLAN CREDIT TO TEAMMATE: ANGELA CHIESA

FOR

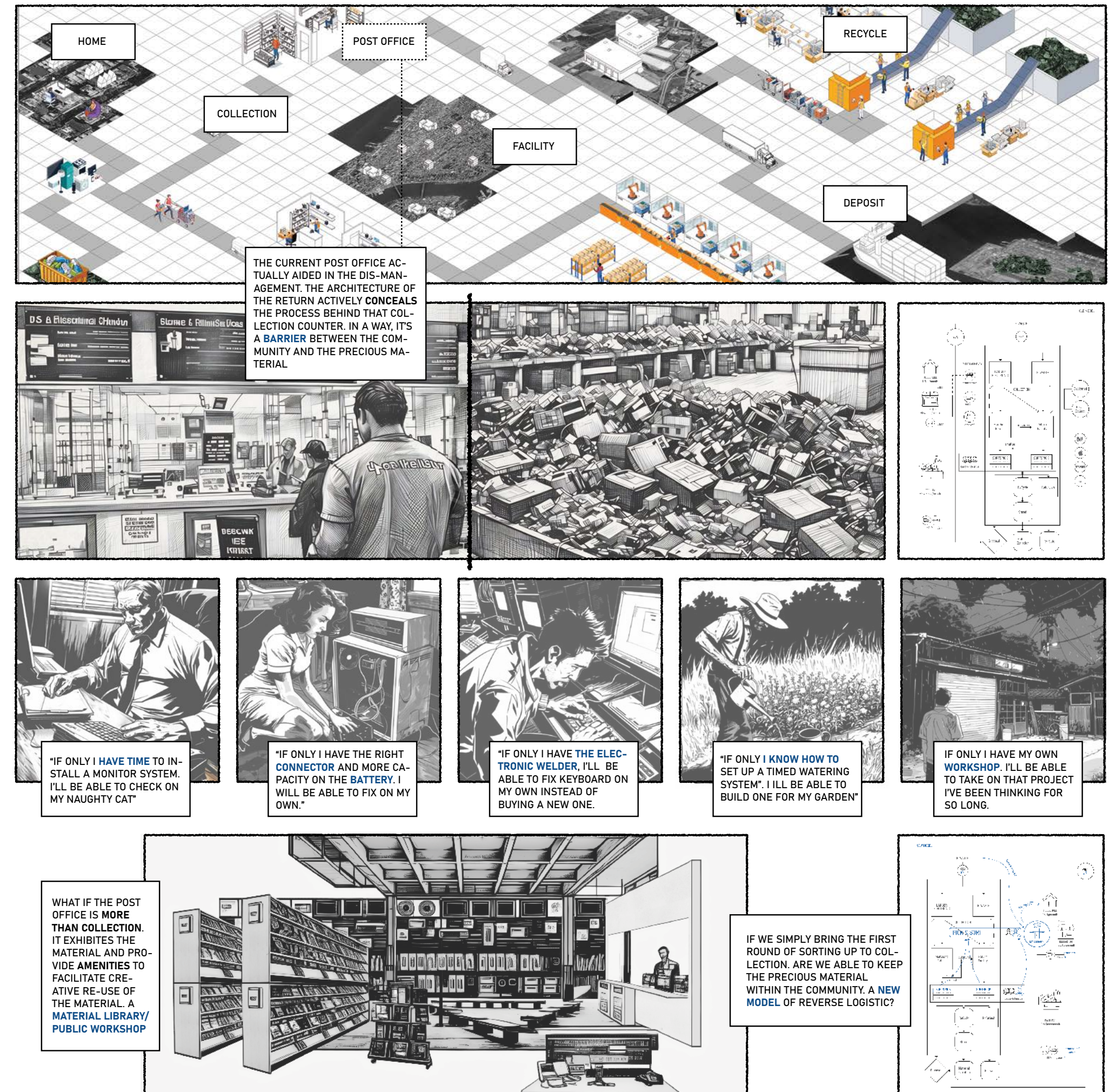
ADAPTATION

POTENTIAL ENDLESS



ADAPT #2 DEMAND

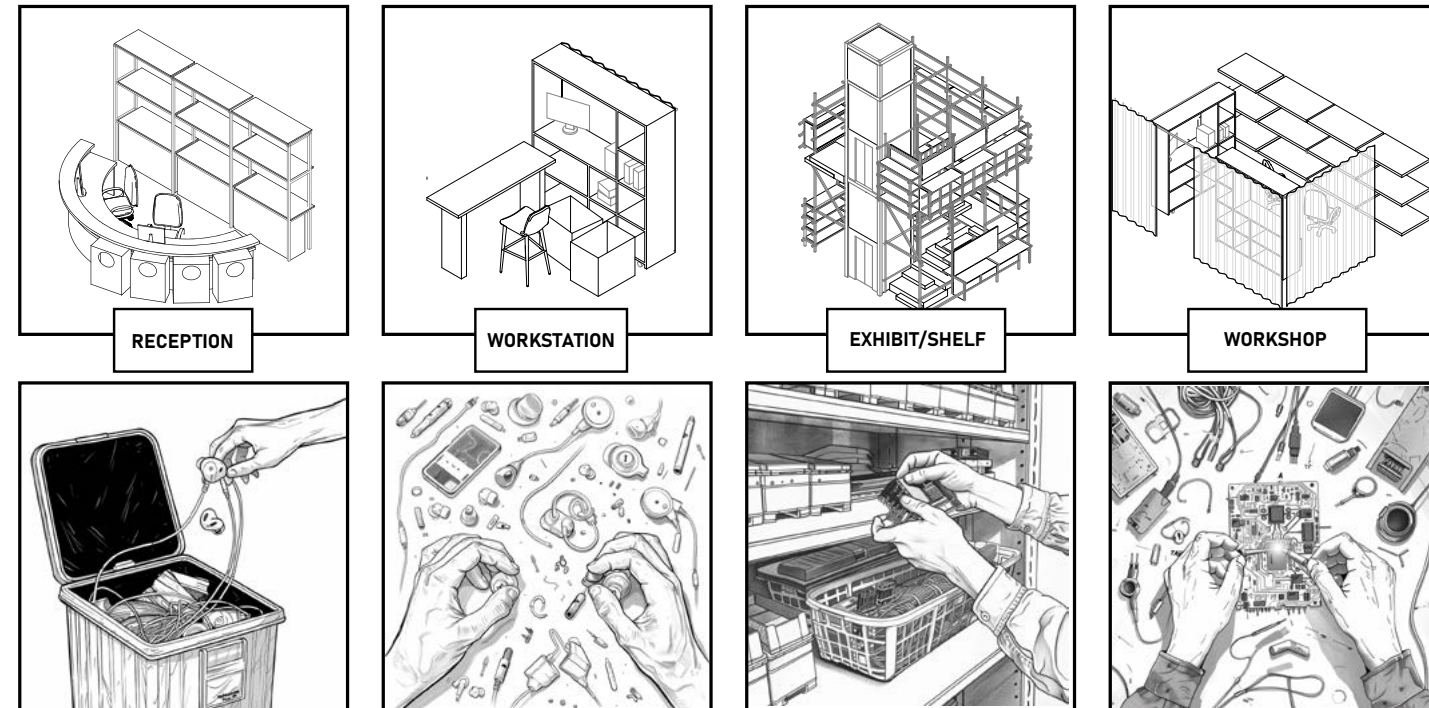
AT A SMALLER SCALE, ADAPTATION BECOMES MORE PRECISE. THIS TIME, WE ARE NOT TASKED WITH ADDRESSING GRAND SOCIAL CHALLENGES, BUT WITH SENSING SUBTLE SHIFTS IN DEMANDS—AND ALLOWING ARCHITECTURE TO ADJUST ACCORDINGLY. IN SUCH CONTEXTS, A LIGHTER, MORE AGILE APPROACH MAY PROVE MORE EFFECTIVE.



SOMEONE'S JUNK MAY BE OTHER'S TREASURE



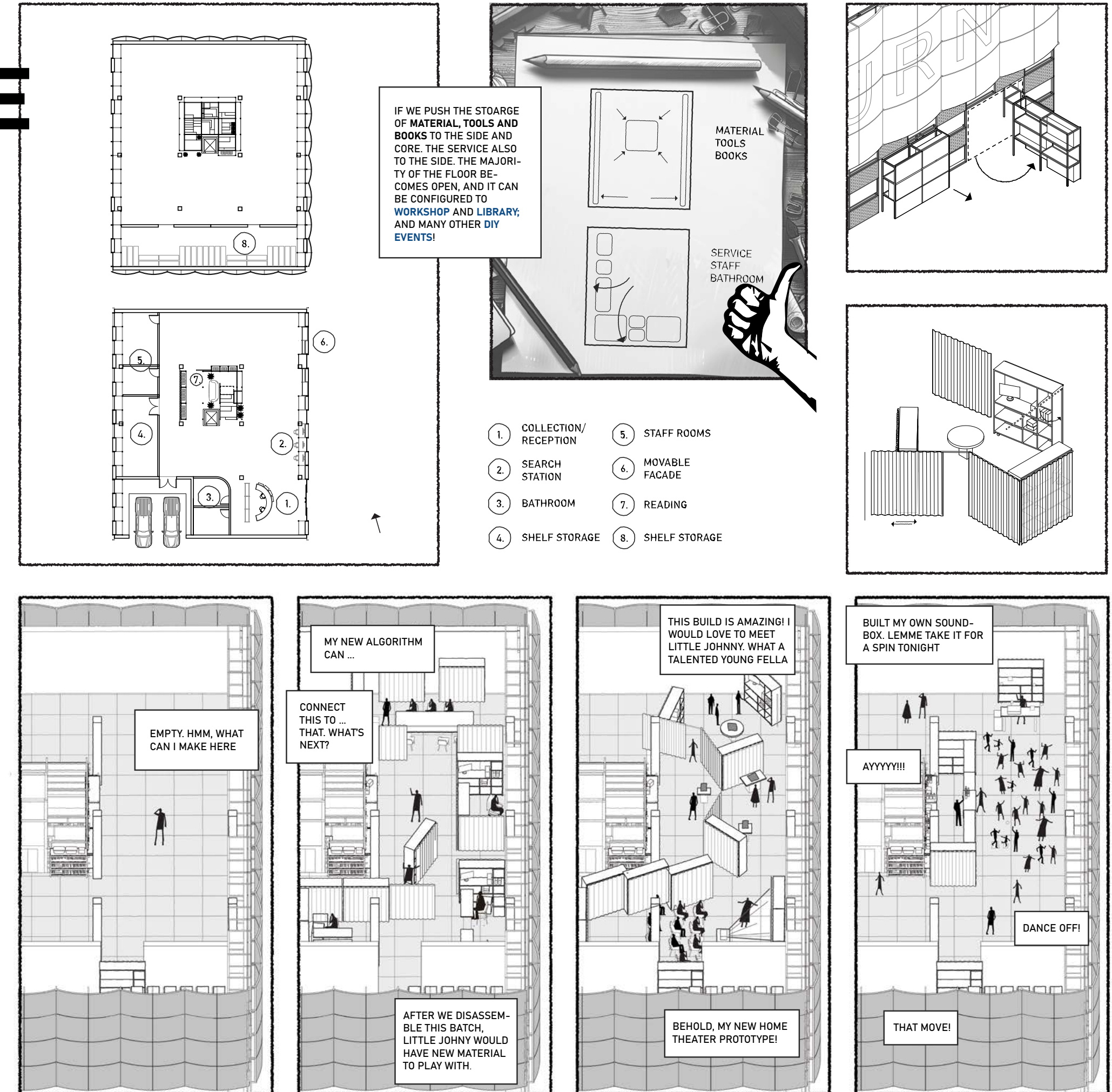
RETURN AND BUILD YOUR DREAM THIS CHRISMAS.
HO HO HO, DON'T LET IT GO—DIY AND MAKE IT GLOW!

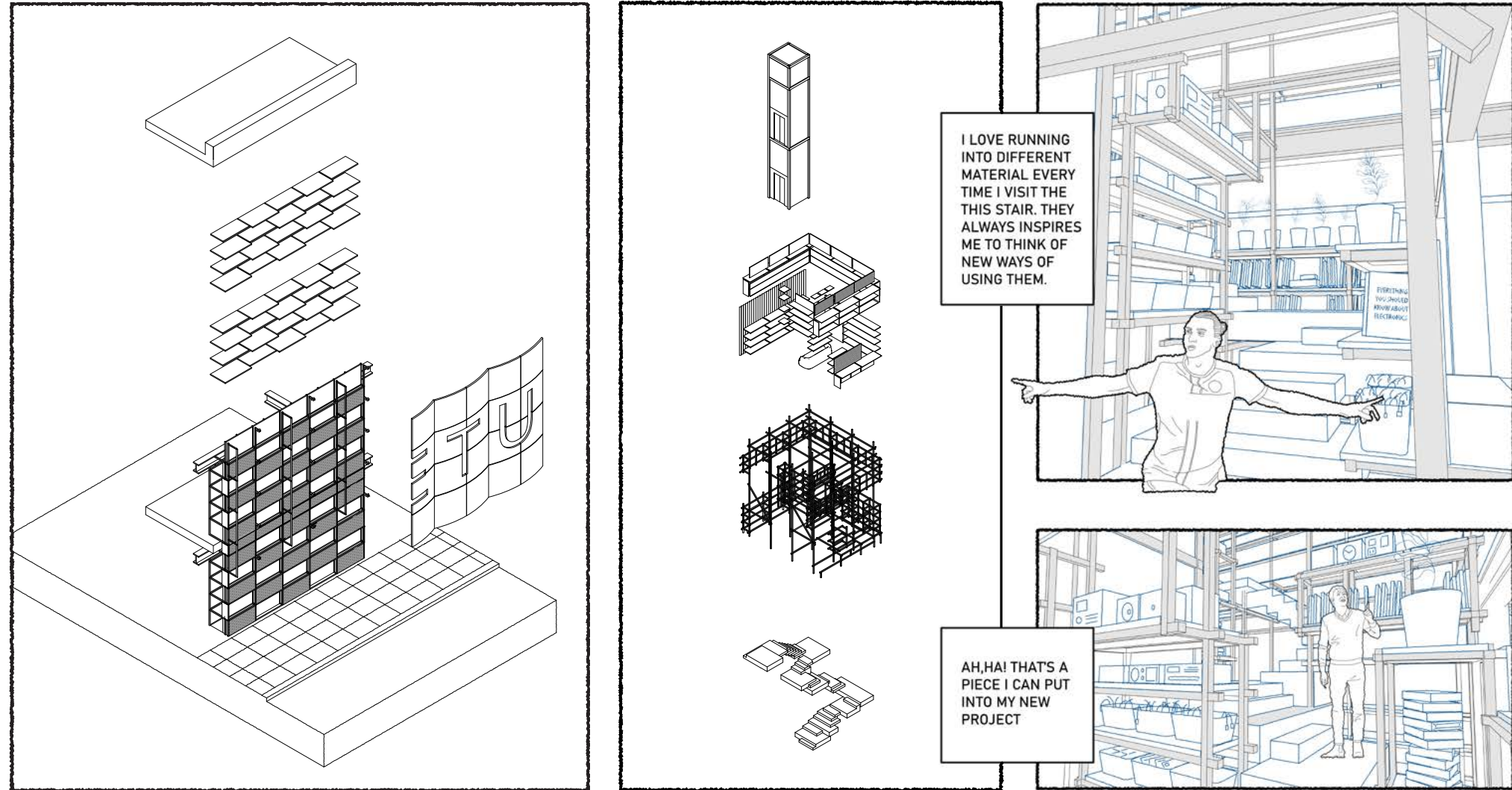


DIY'gest
Hub
-dealing with
the "unwanted"

VARIOUS
TYPOLOGY
TO FACILATE
OPERATION

REPOONDSIVE
SYSTEM
FOR
DIFFERENT
ACTIVITIES





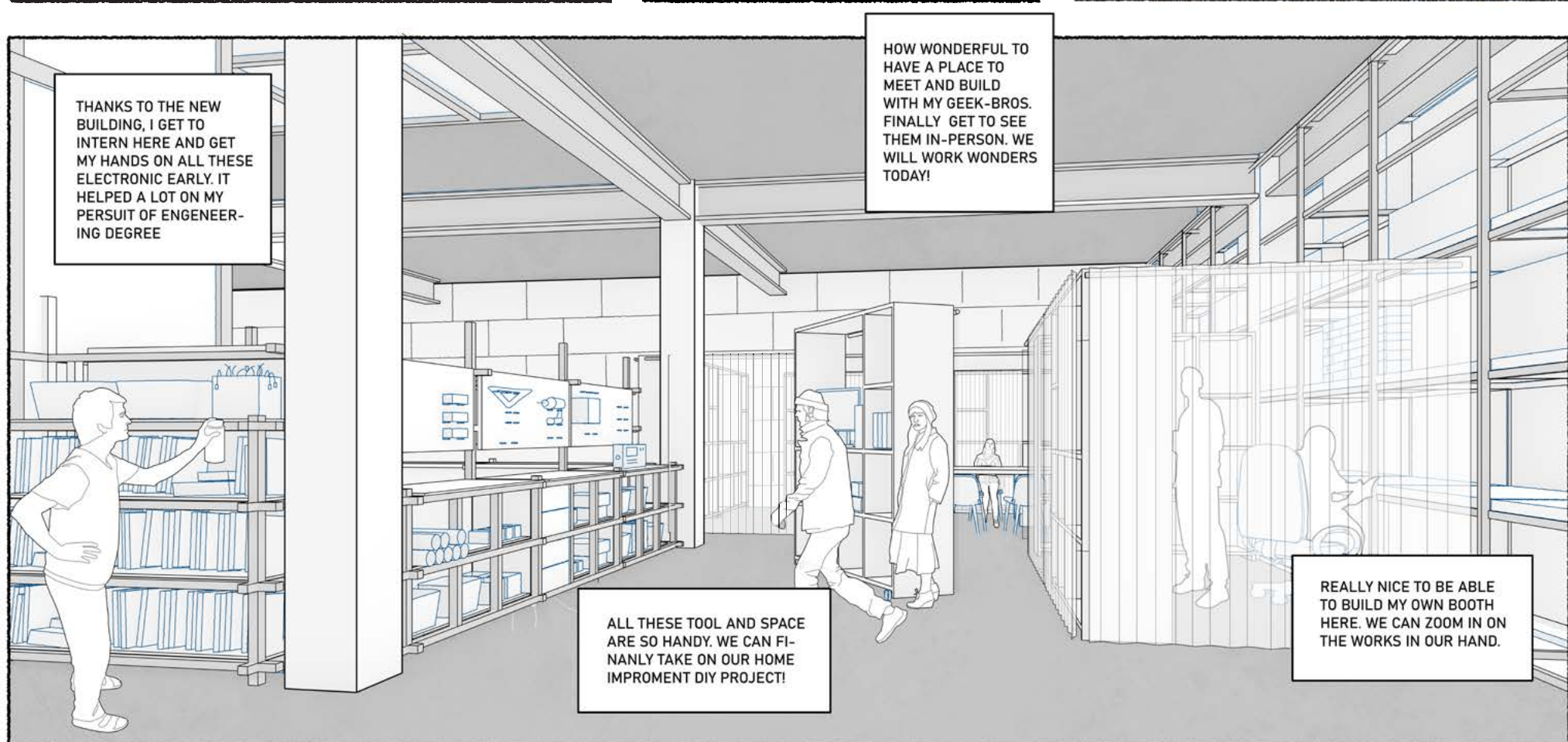
SYSTEM

TO

THIS PAGE LEFT BLANK

IGNITE

INSPIRATION



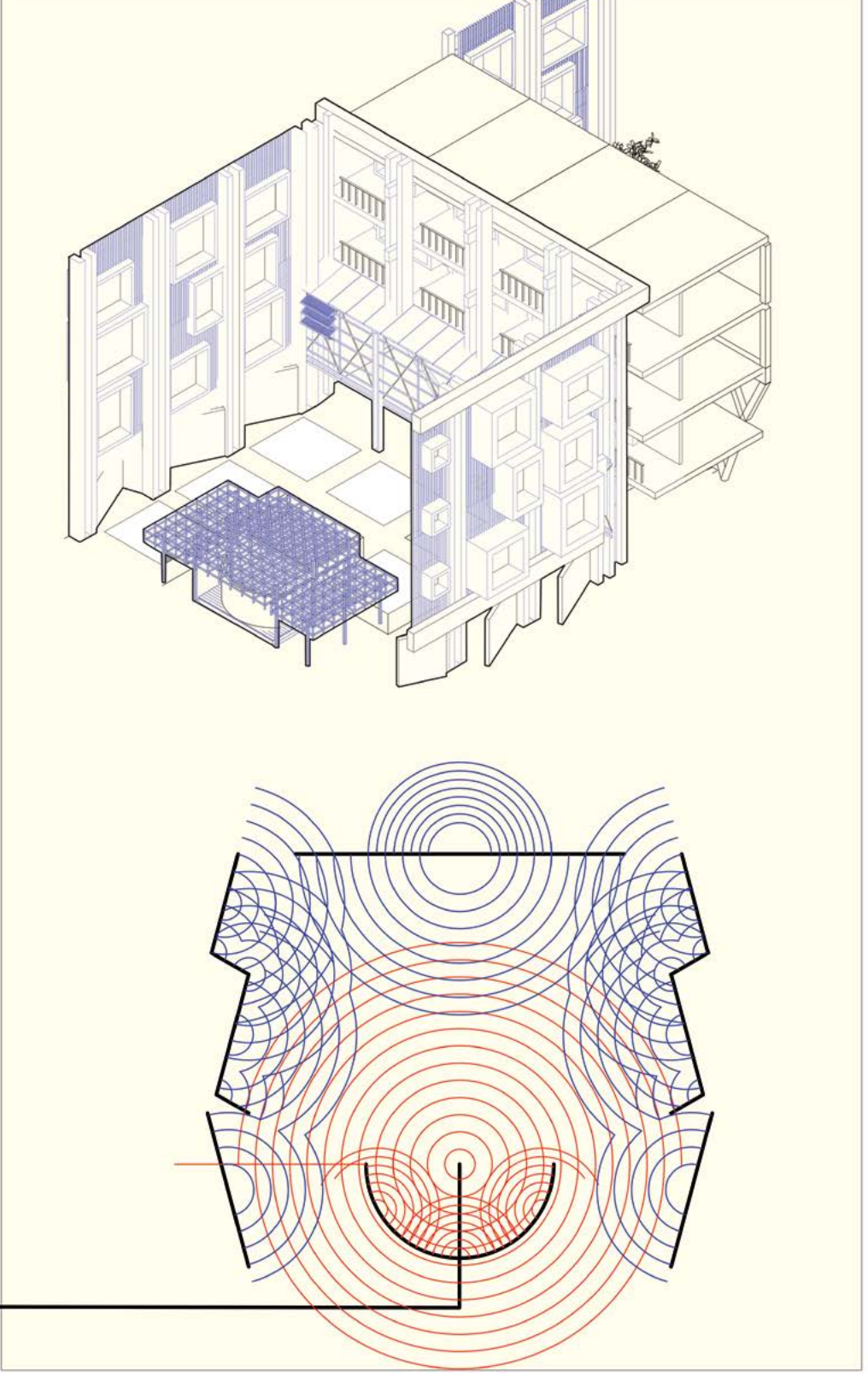
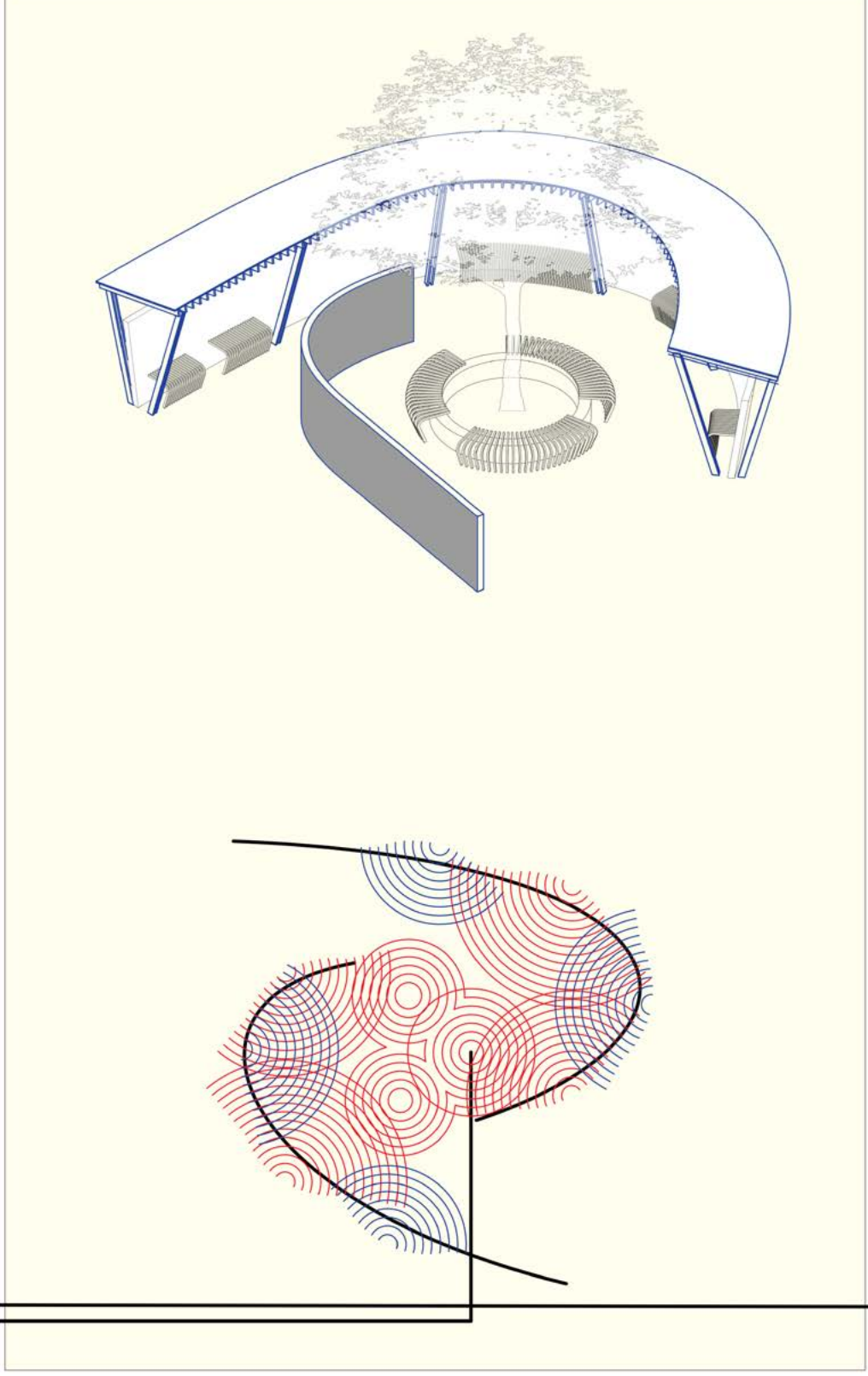
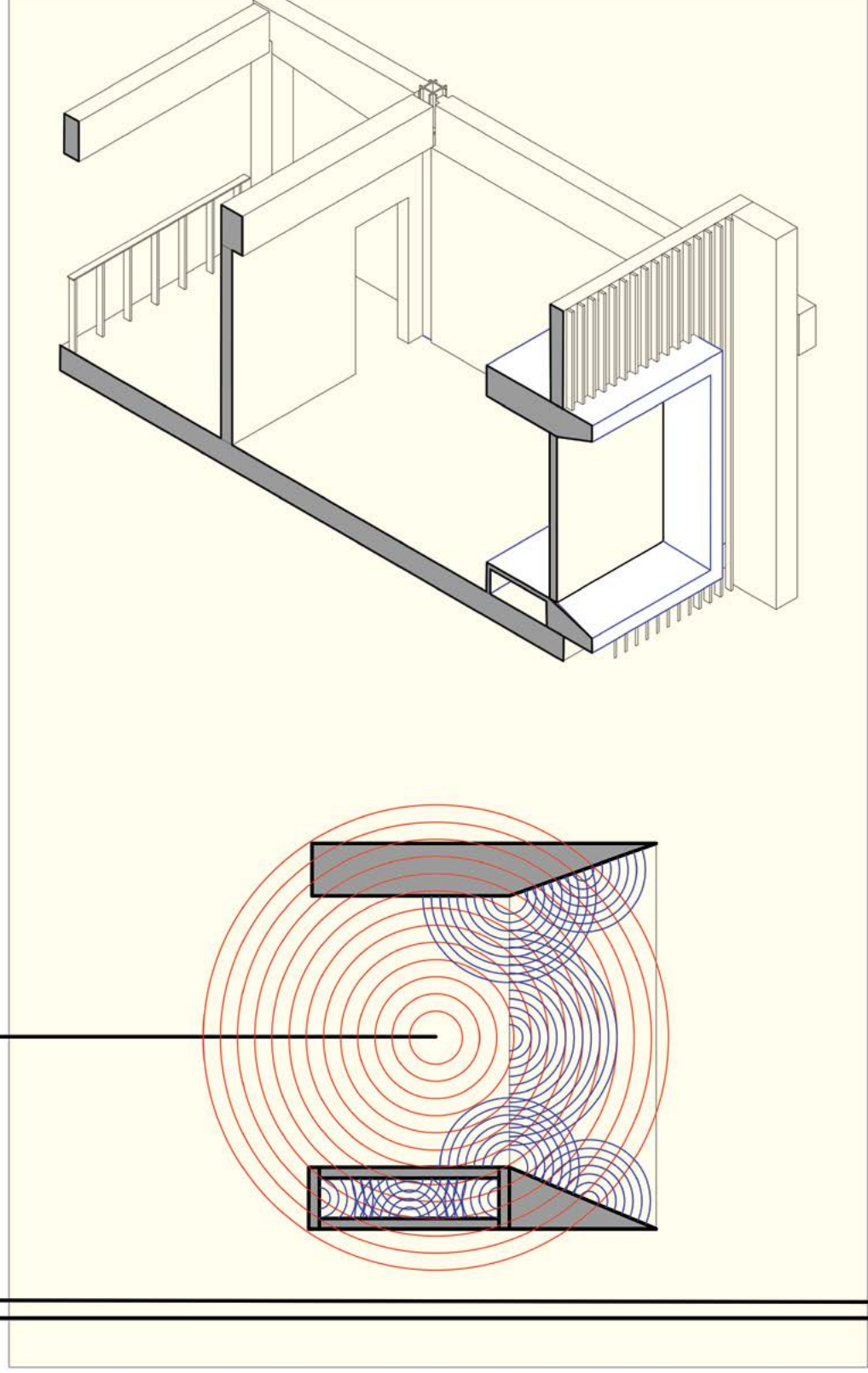
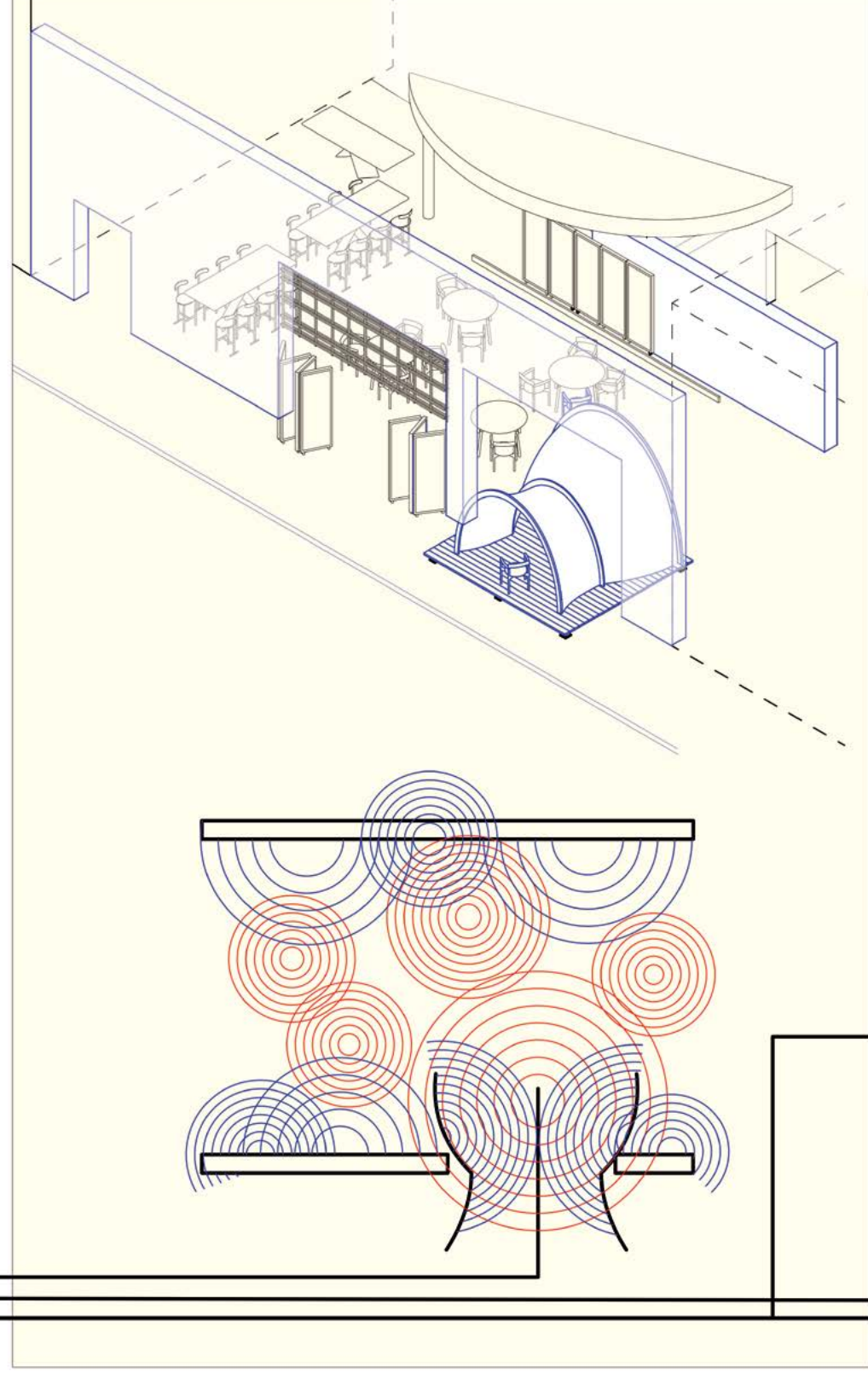
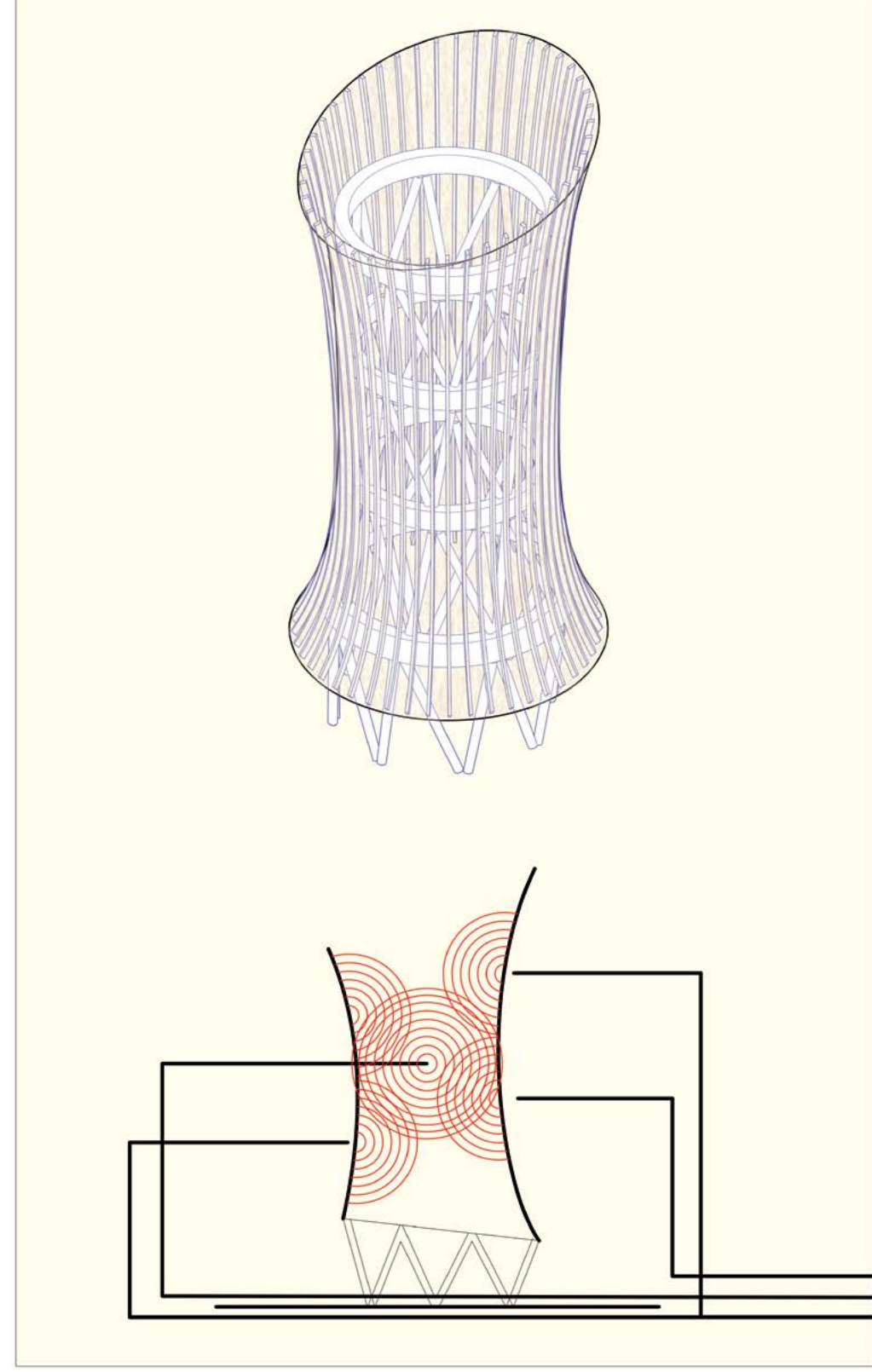
ADAPT **#3** **PEOPLE**

WHEN PUSHED TO ITS LIMIT, THIS APPROACH INVITES US TO SERVE A SPECIFIC GROUP WITH PRECISION. IN SUCH CASES, THE VERY ACT OF DEFINING WHO WE DESIGN FOR BECOMES THE STARTING POINT OF ADAPTATION. DESIGN THAT RESPONDS TO NEED, AND SYSTEMS ORIENTED TOWARD THE FUTURE, CAN FIND ALIGNMENT WITHIN THIS FRAMEWORK. ONE PLUS ONE DOES NOT MAKE TWO—IT REMAINS ONE. WHEN OUR FOCUS STAYS FIRMLY ON PEOPLE,

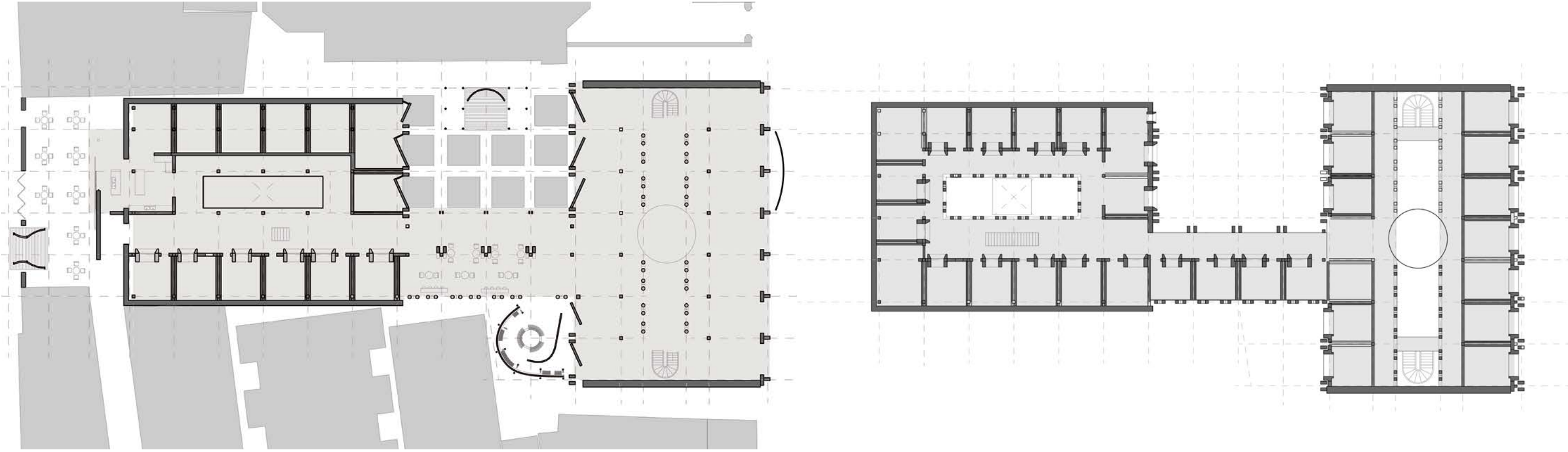
ADAPT **#3** **PEOPLE**

THE TENSION BETWEEN EXISTING BUILDINGS AND NEW SYSTEMS DISSOLVES. THE GAP BETWEEN OLD FUNCTIONS AND NEW DEMANDS NO LONGER FEELS LIKE A CONTRADICTION. THESE APPARENT CONFLICTS ARE ABSORBED INTO THE EVOLVING RHYTHMS OF NEW USERS, FORMING A RENEWED KIND OF SYNTHESIS. THIS, TO US, IS ONE OF THE UNIQUE BEAUTIES OF ADAPTATION—ITS ABILITY TO TRANSFORM, RATHER THAN REPLACE.

A D A P T

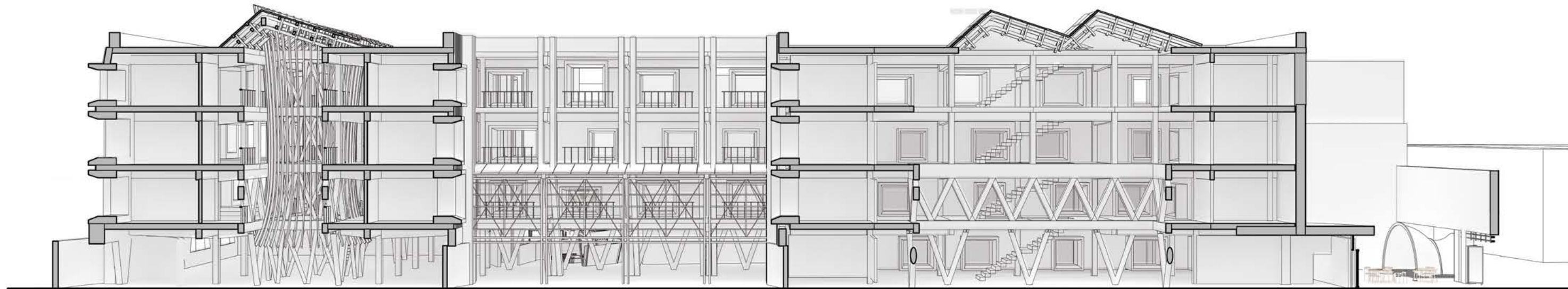


M U S I C



THIS PAGE LEFT BLANK

TO BE CONTINUED.



ADAPT

#4

INDUSTRY

THIS PROJECT IS NOT A CONTINUATION OF THE PREVIOUS ONE, BUT AN EXPLORATION OF POSSIBILITIES AT A LARGER SCALE. IT BEGINS WITH TECHNOLOGICAL ADVANCEMENT, SEEKING NEW ARCHITECTURAL OPPORTUNITIES THROUGH THAT LENS. ITS SIGNIFICANCE LIES IN THE REMINDER THAT WHILE SOCIAL AND CULTURAL FORCES ARE VITAL, TECHNOLOGY AND ECONOMY ARE EQUALLY POWERFUL DRIVERS OF LIFESTYLE TRANSFORMATION.



HVAC is

ISSUE

Waste Heat increase
COOLING DEMAND

>2.5°F

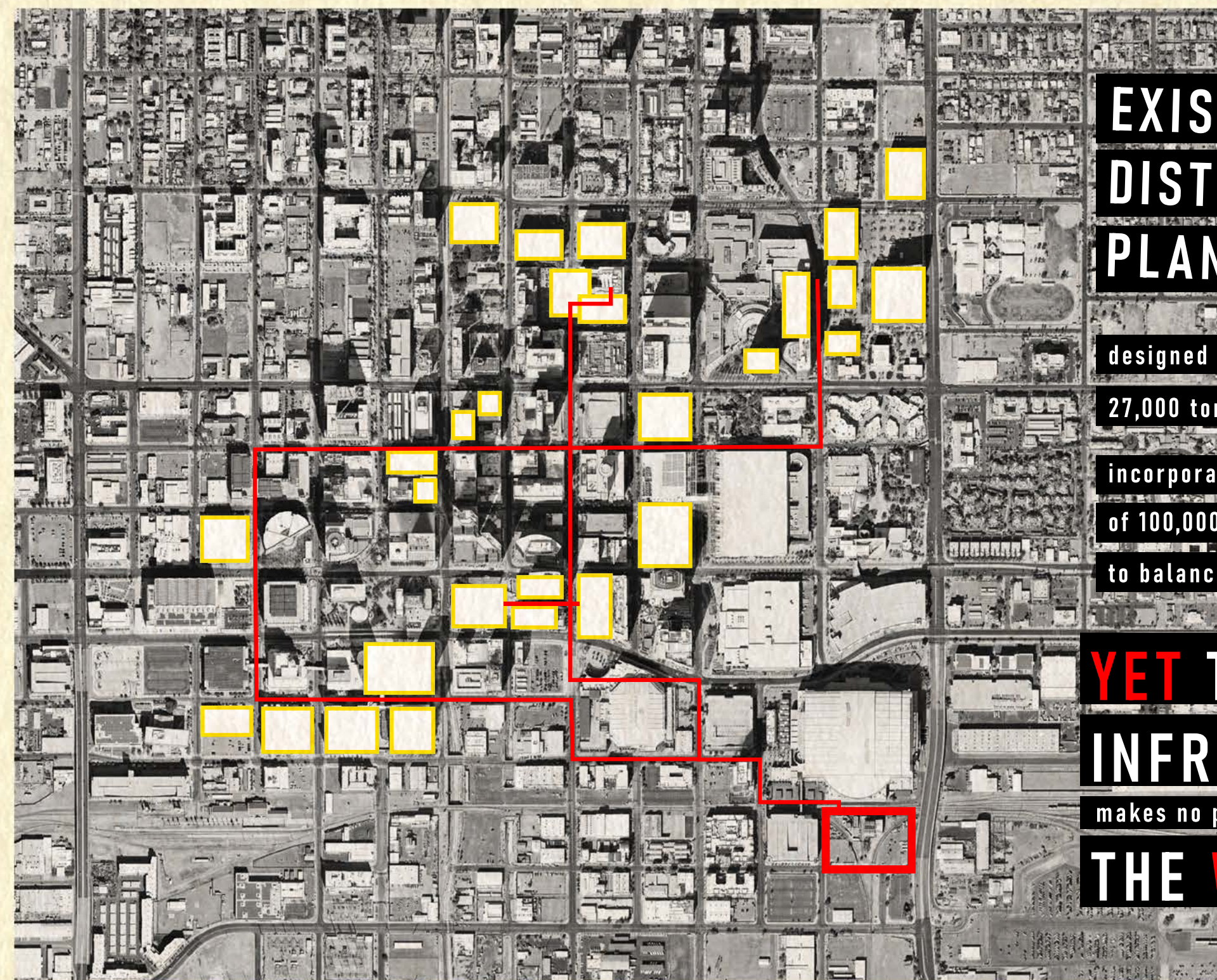
HVAC increase mean air temperature over

existing technology allows district cooling to serve radius between 2-10km

**CONDENSED
USABLE HEAT**
(low grade)

**SCATTERED
WASTE HEAT**

Image: ©

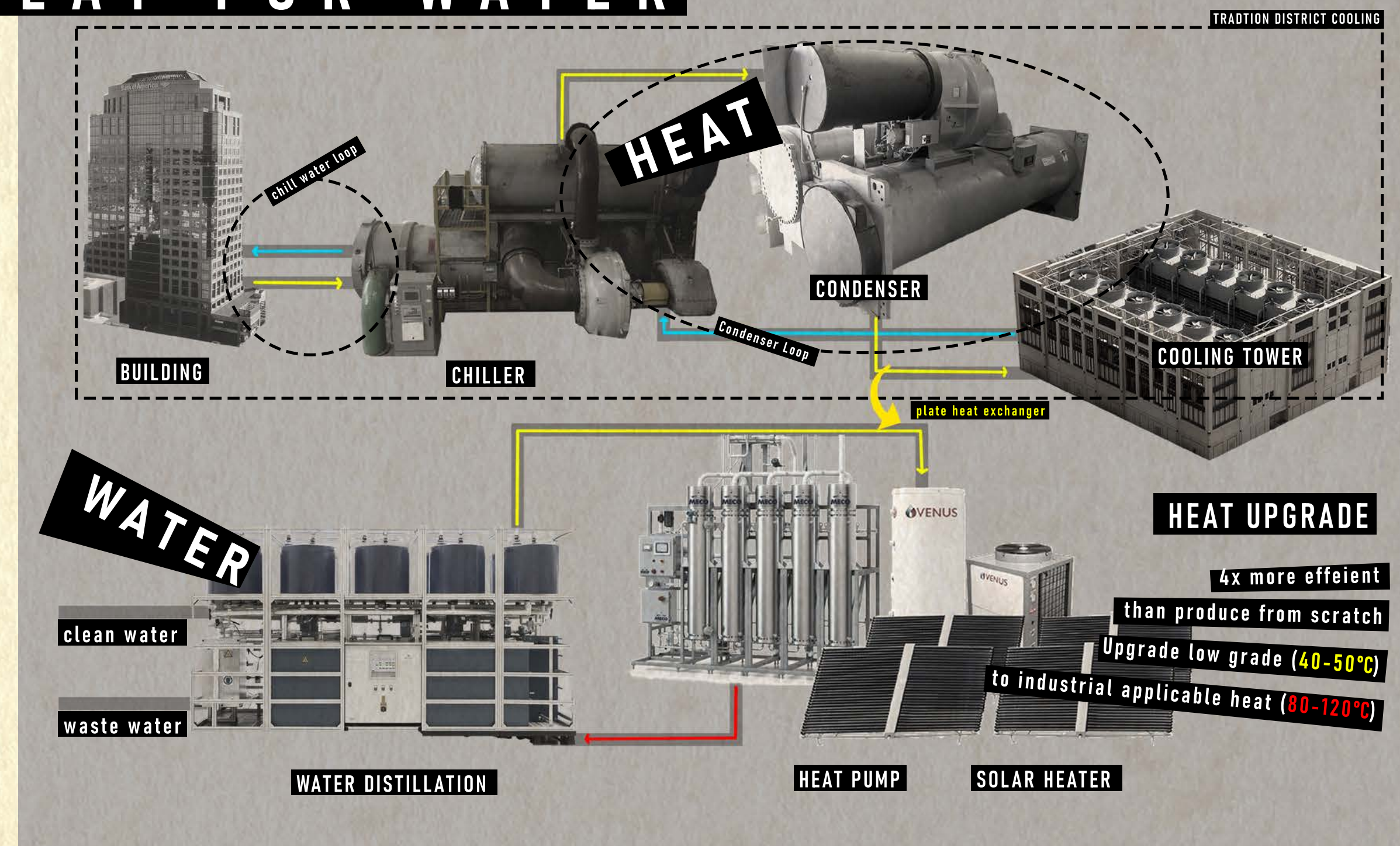


EXISTING 2025 DISTRICT COOLING PLAN

designed to produces
27,000 tons of cooling
incorporates ice production and storage
of 100,000 tons
to balance peak/off-peak hour demand

**YET THE EXISTING
INFRASTRUCTURE
makes no plan to utilize
THE WASTE HEAT**

HEAT FOR WATER





ADAPT
FOR
FUTURE

fin.