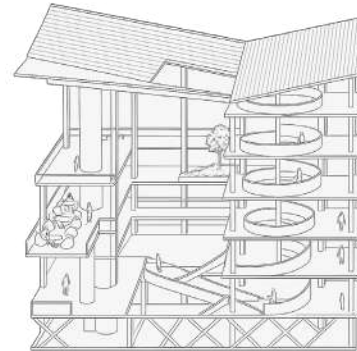


Y I H A N Z H E N G
S E L E C T E D W O R K S
2 0 2 3 - 2 0 2 4

C O L U M B I A U N I V E R S I T Y G S A P P
M.S. ADVANCED ARCHITECTURAL DESIGN

CONTENT.



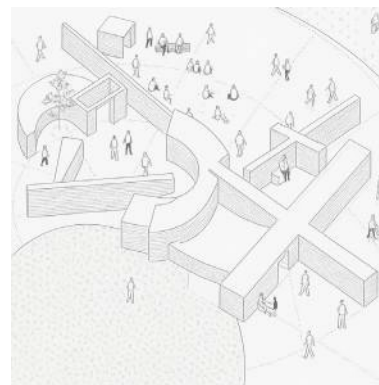
01. IN THE FUTURE'S FUTURE: HEALING WITH THE GENTLEGRACE OF WATER

SU 2024 STUDIO
STUDIOCRITIC: DAN WOOD



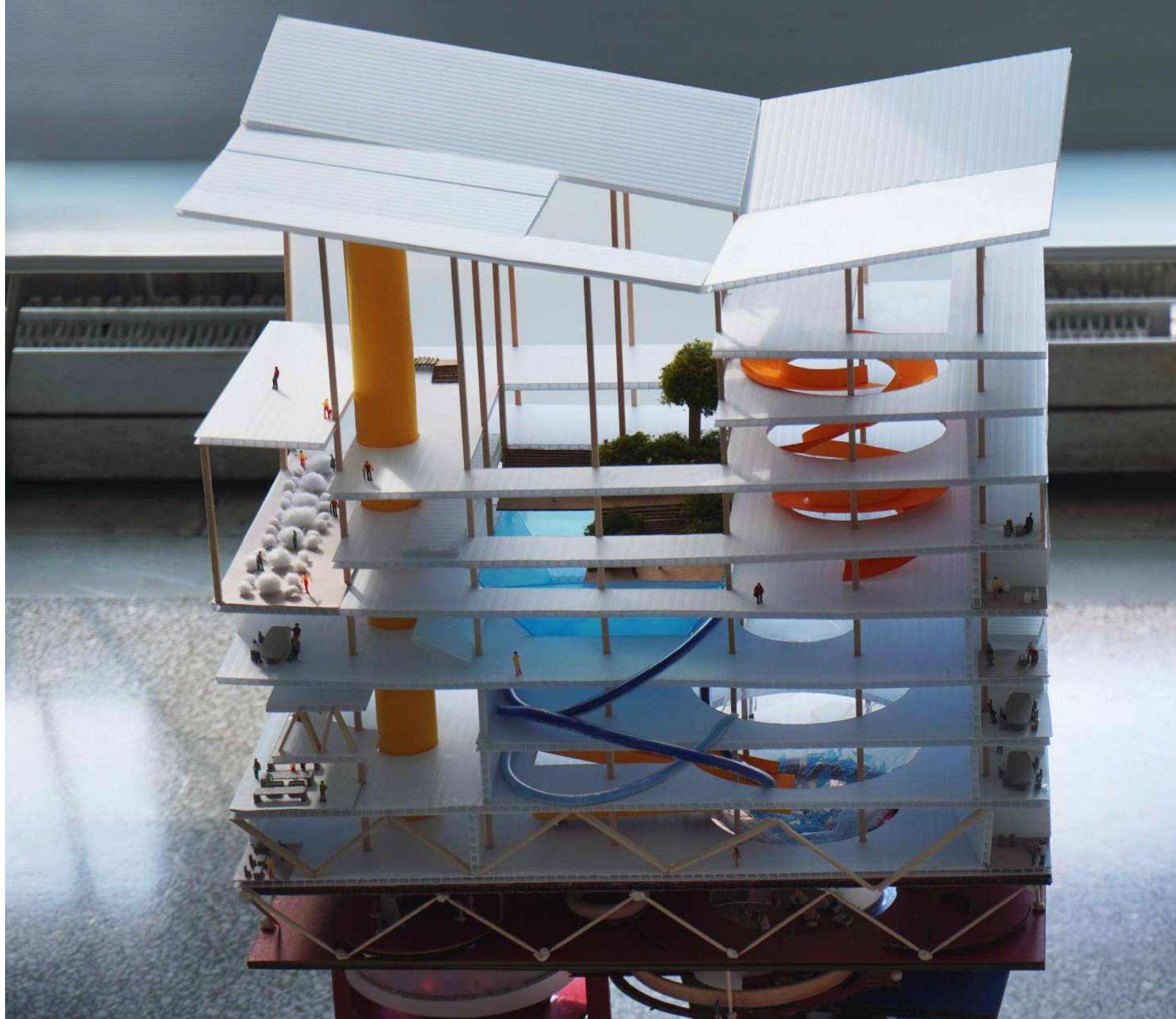
02. A drizzling, incessant, and damp rain: HEALING WITH THE GENTLEGRACE OF WATER

FA 2024 STUDIO
STUDIOCRITIC: PHILIPPE RAHM
MARIAMI MAGHLAKELIDZE



03. A DRIZZLING, INCESSANT, AND DAMP RAIN: STRATEGIC DESIGN FOR GRIEF AND BEREAVEMENT

SP 2025 STUDIO
STUDIOCRITIC: Anthony Clarke
Alonso L Ortega



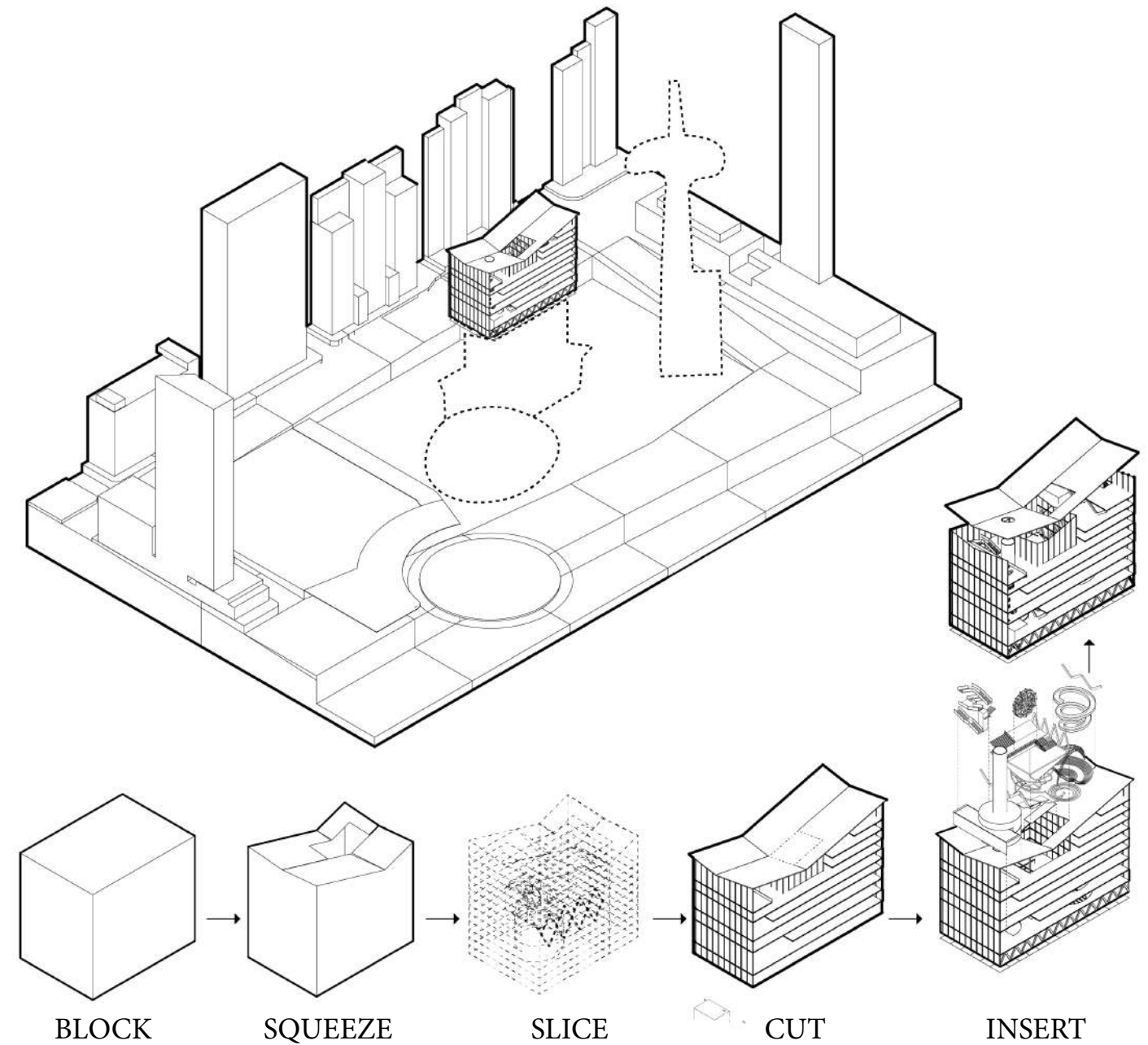
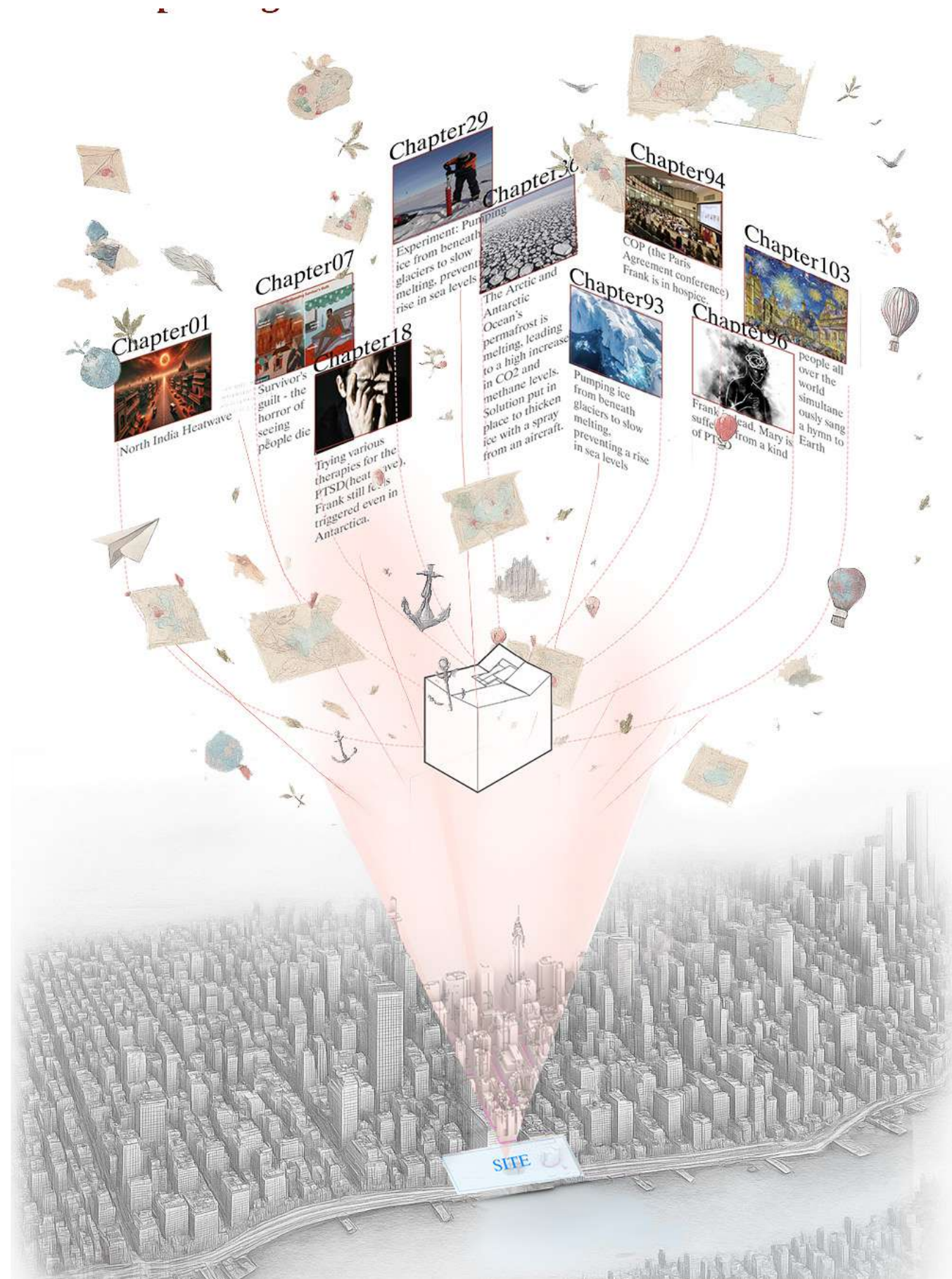
-01-
HEALING WITH THE GENTLEGRACE OF WATER
IN THE FUTURE'S FUTURE: Circa 2050

SU 2024 STUDIO
INSTRUCTOR: DAN WOOD
LOCATION: NYC
TEAMMATE: DEVYANSHI ARYA, ELISE SHEN

In a future shaped by technological advancement and social stabilization, a new water-energy system emerges—integrating sloped roofs, tanks, pipelines, and spherical hot springs. It enables seawater desalination, carbon capture, and redistribution to arid basins, all governed by advanced computational centers.

This dual-function complex combines a Ministry of Water Treatment with a Healthcare Program. Drawing inspiration from institutional visits to the UN and Ford Foundation, the design translates diverse emotional atmospheres into spatial experiences.

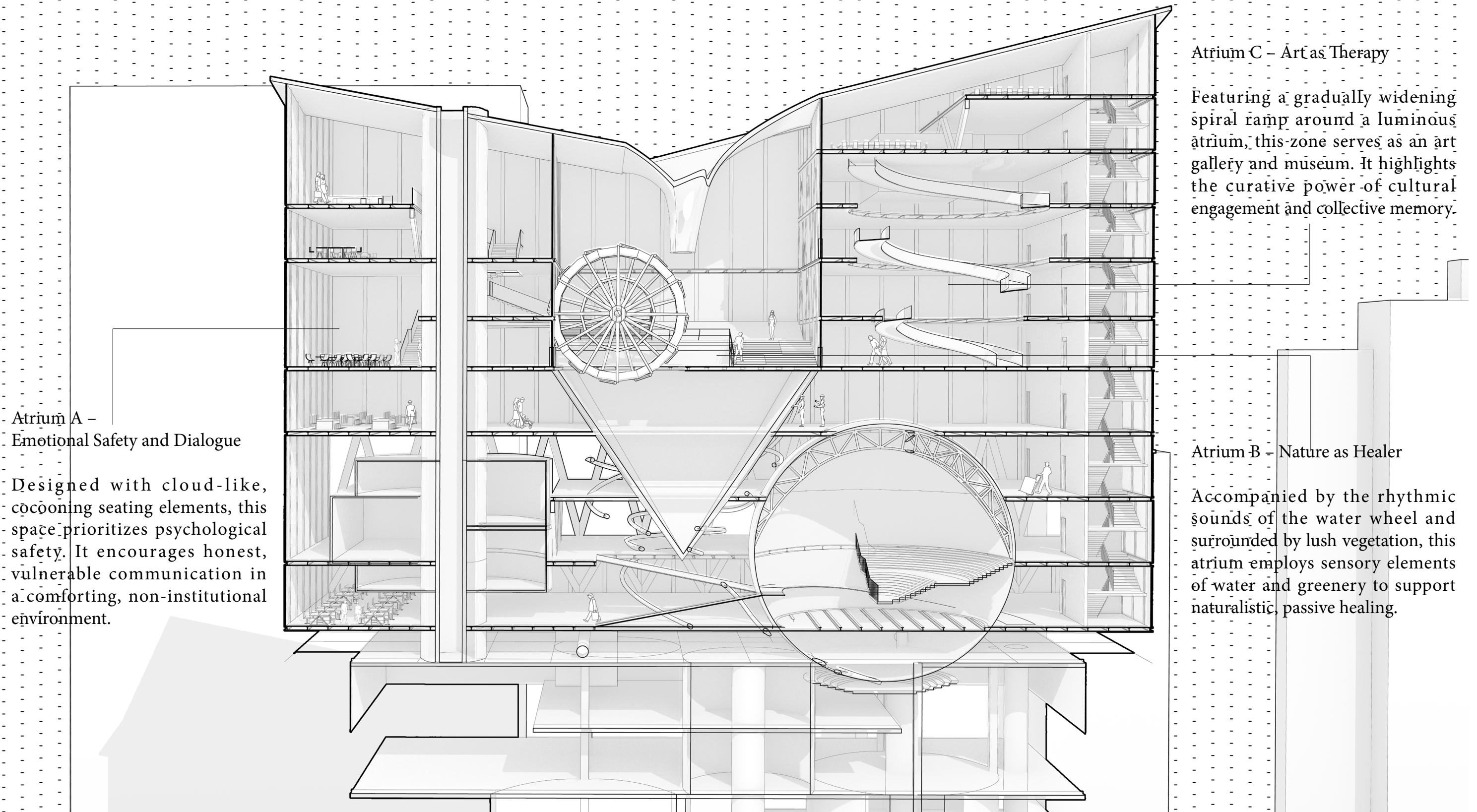
Three atriums represent progressive stages of healing: emotional safety through enveloping seating, natural restoration with flowing water and vegetation, and artistic expression via a spiraling gallery. The semi-transparent façade of geometric forms embodies calmness above and circulation beneath—reflecting a future where environment and emotion are equally designed for recovery.



CONCEPT GENERATION

Kim Stanley Robinson's "The Ministry for the Future" provides a comprehensive and insightful exploration of water treatment and water resources reform. By integrating advanced technologies, policy reforms, and community involvement, the novel presents a multi-faceted approach to addressing one of the most pressing issues of our time.

PERSPECTIVE SECTION



Three Atriums - Three Phases of Healing



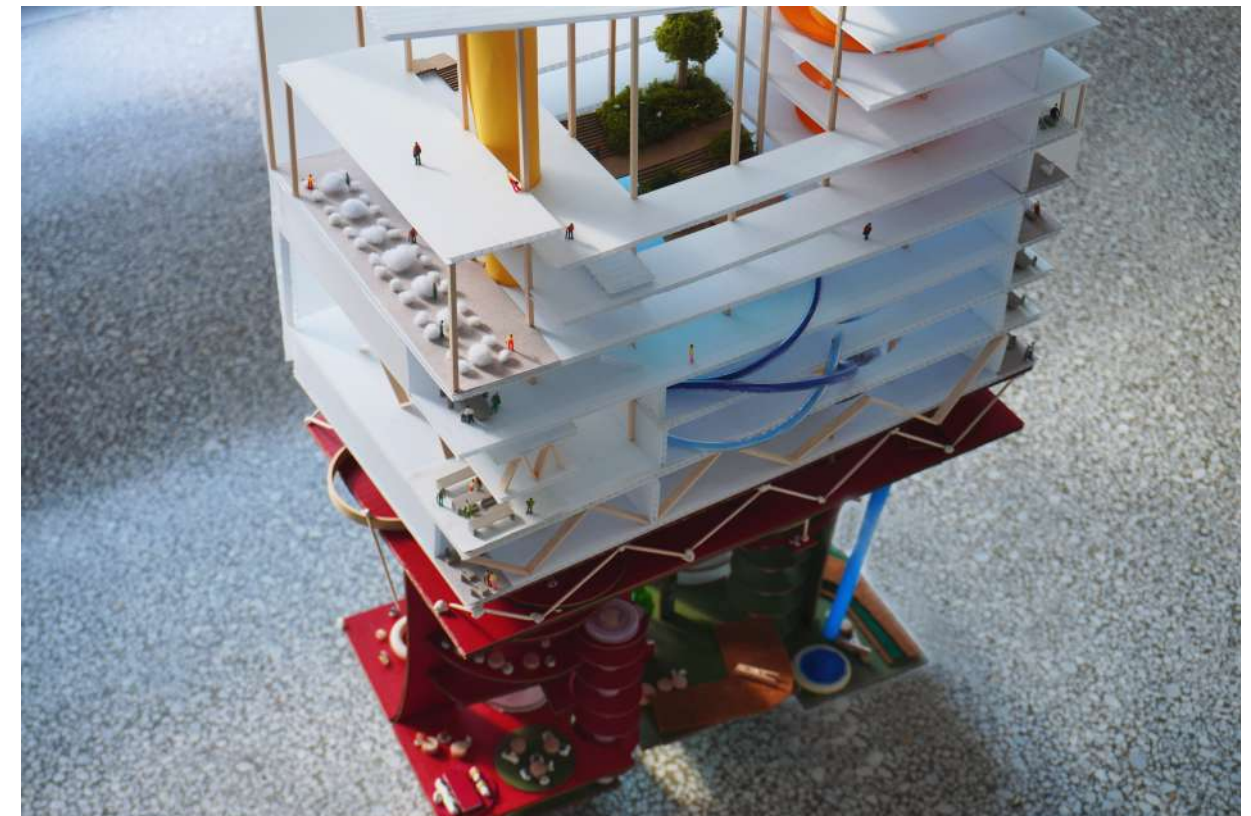
PROJECT MODEL: VIEW OF ATRIUM C



PROJECT MODEL: VIEW OF ATRIUM B



PROJECT MODEL: VIEW OF ATRIUM A



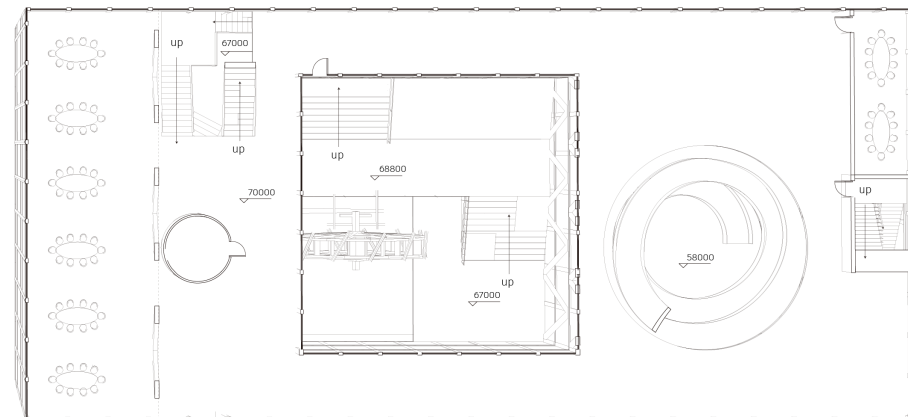
PROJECT MODEL: BIRDVIEW



Ministries For the Future's Future

Within this tripartite spatial configuration, the healthcare program unfolds as a layered, humane response to trauma—moving from the personal to the collective, from silence to articulation, and from passive reflection to active transformation.

And all eleven Ministry of one Treatment with a certain Program form the general world department in the FUTURE'S FUTURE.





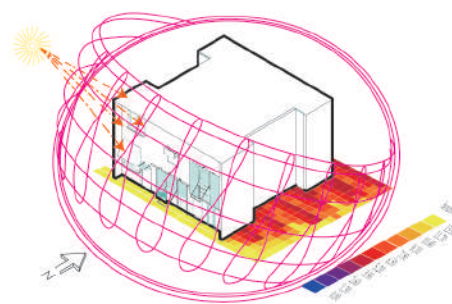
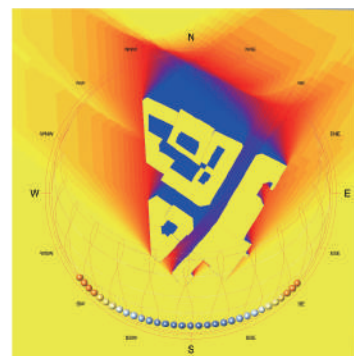
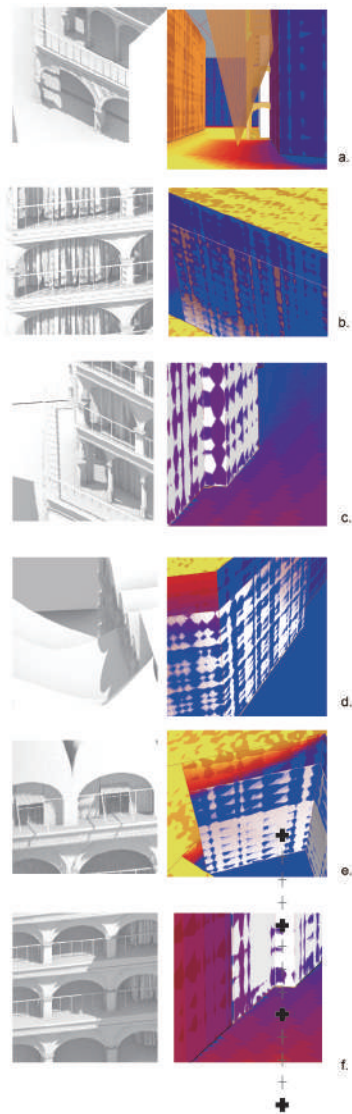
-02- HEALING WITH THE GENTLEGRACE OF WATER

How to live in Paris in 2100

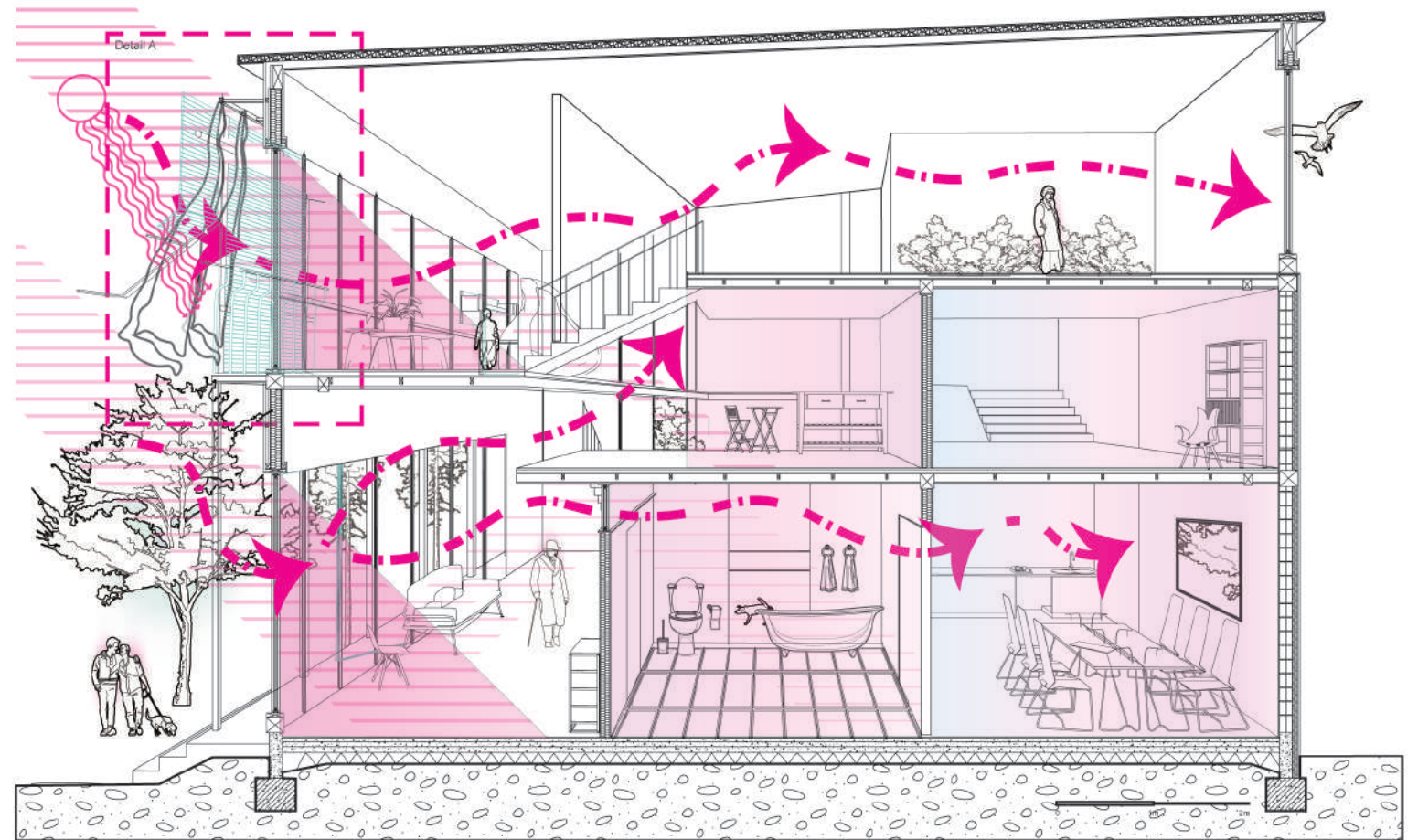
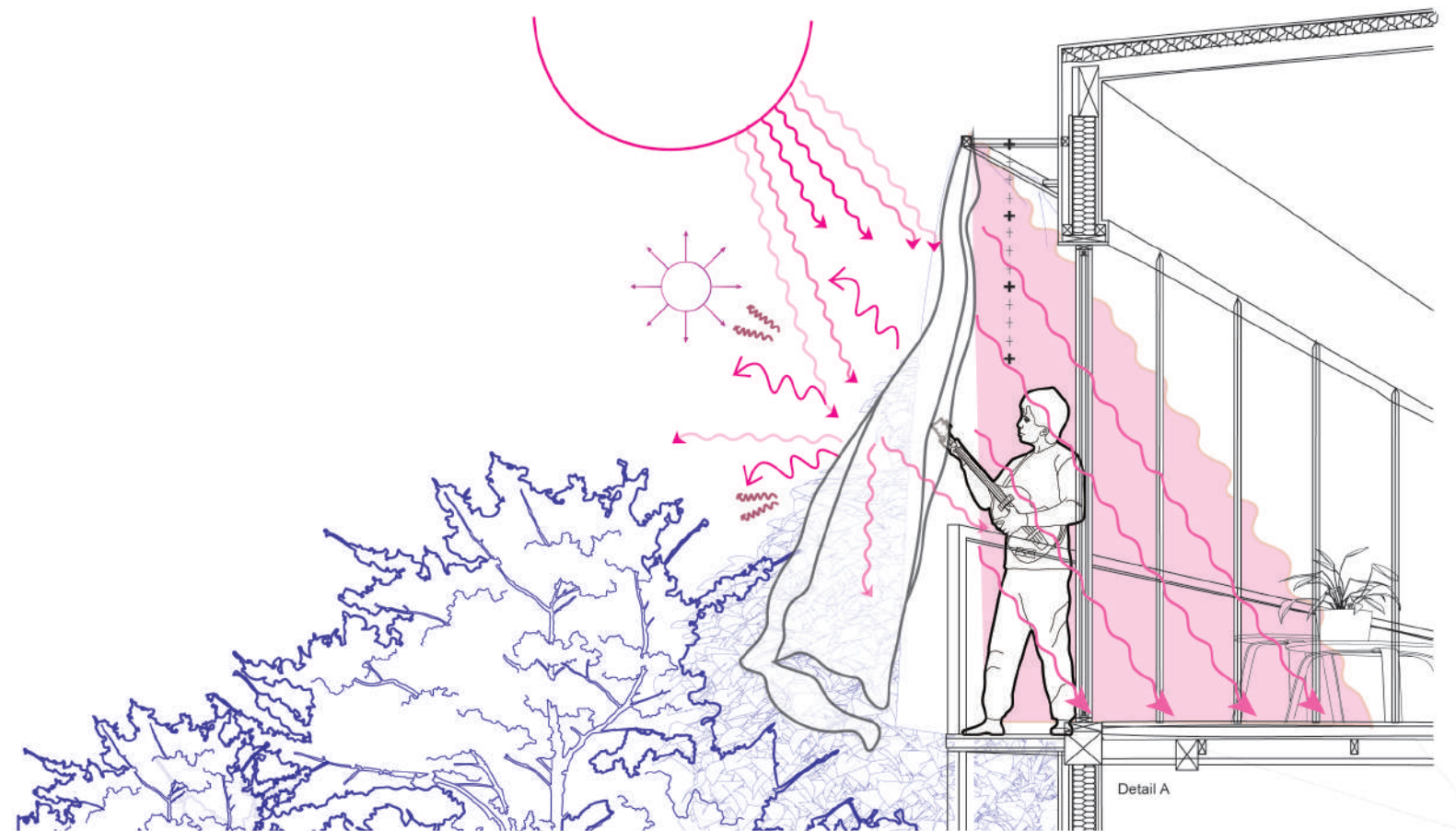
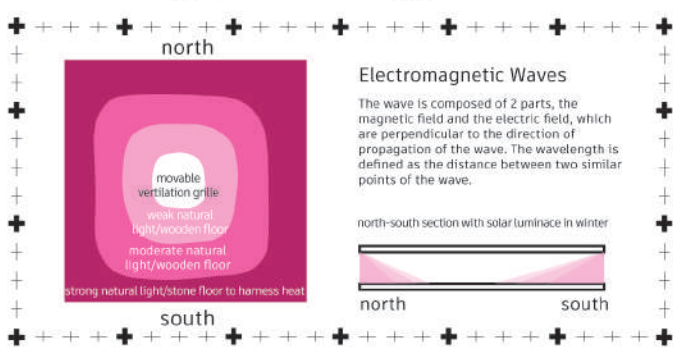
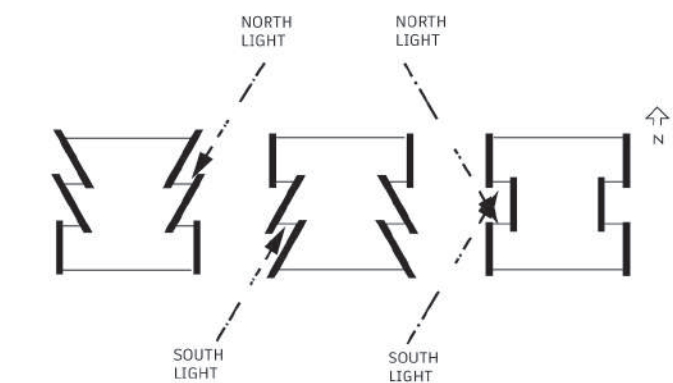
SU 2024 STUDIO
INSTRUCTOR: PHILIPPE RAHM, MARIAMI
MAGHLAKELIDZE
LOCATION: PARIS
INDIVIDUAL WORK

For centuries, curtains have played a pivotal role in shaping interior spaces, seamlessly adapting to and redefining the balance between public and private areas based on users' needs. With innovations in materials and styles, curtains now offer a wide range of functionalities, including adjustable opacity, light absorption, insulation, soundproofing, UV protection, and even automation. They effectively block heat radiation, help maintain a stable indoor temperature, and can be easily opened or closed, making them not only ideal for hot summers and mild winters but also versatile in meeting spatial demands such as soundproofing, waterproofing, and ventilation.

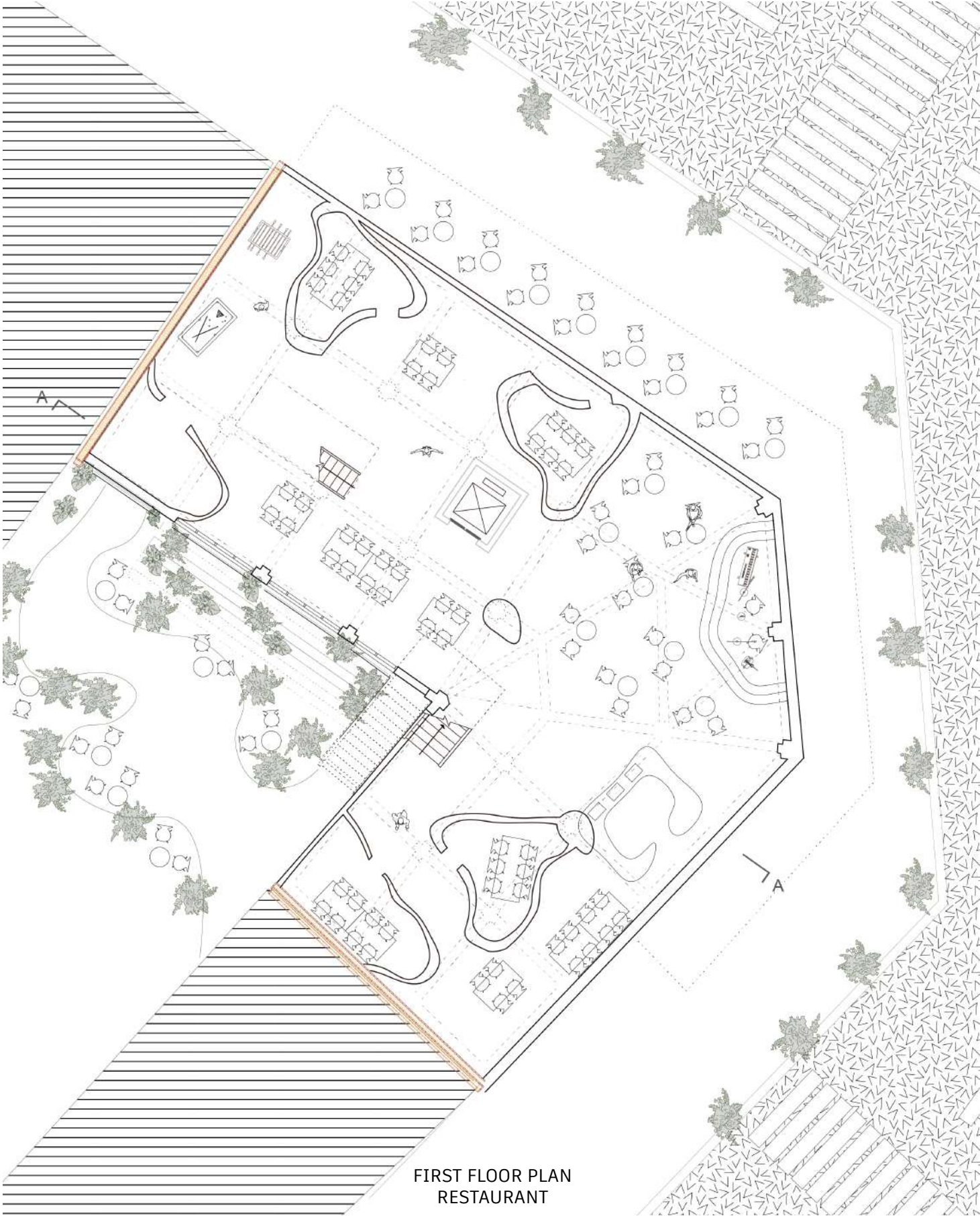
By replacing solid walls, curtains installed at regular intervals on curtain rods create flexible and dynamic spatial layouts while enhancing airflow throughout home to encourage ventilation. Their adaptable configurations promote better interaction among occupants, facilitate consistent air circulation, reduce humidity, and provide a living environment characterized by superior thermal and adaptability.



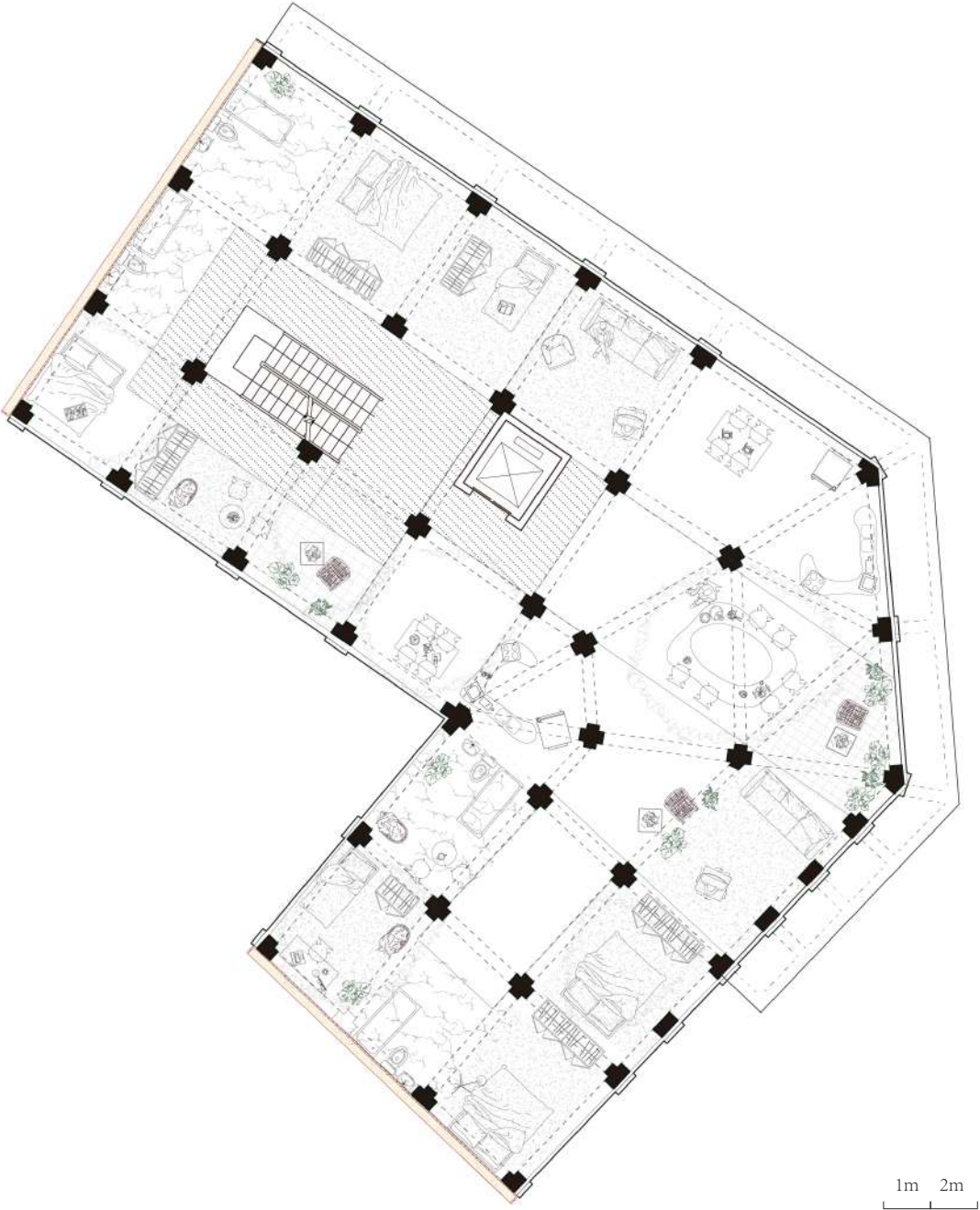
Curtain Type As Solutions	
 Overhang Horizontal panel Traps hot air Can be loaded by snow and wind	 Curtains
 Overhang Horizontal louvers Free air movement Snow or wind load is small Small scale Best buy!	 Blinds
 Overhang Awnings and curtains View restricted giving effective shade in summer Removable to allow more sun and light to enter in winter.	 Fabric Curtains
 Overhang vertical plane Free air movement No snow load View restricted	 Roman Shades
 Vertical fin Slant toward north Restricts view significantly	 Vertical Blinds
 Eggcrate For very hot climates View very restricted Traps hot air	 Bamboo Blinds



TYPICAL PLANS



FIRST FLOOR PLAN
RESTAURANT



TYPICAL PLAN
RESIDENTIAL

DEDAILED SECTIONS

Detained Section

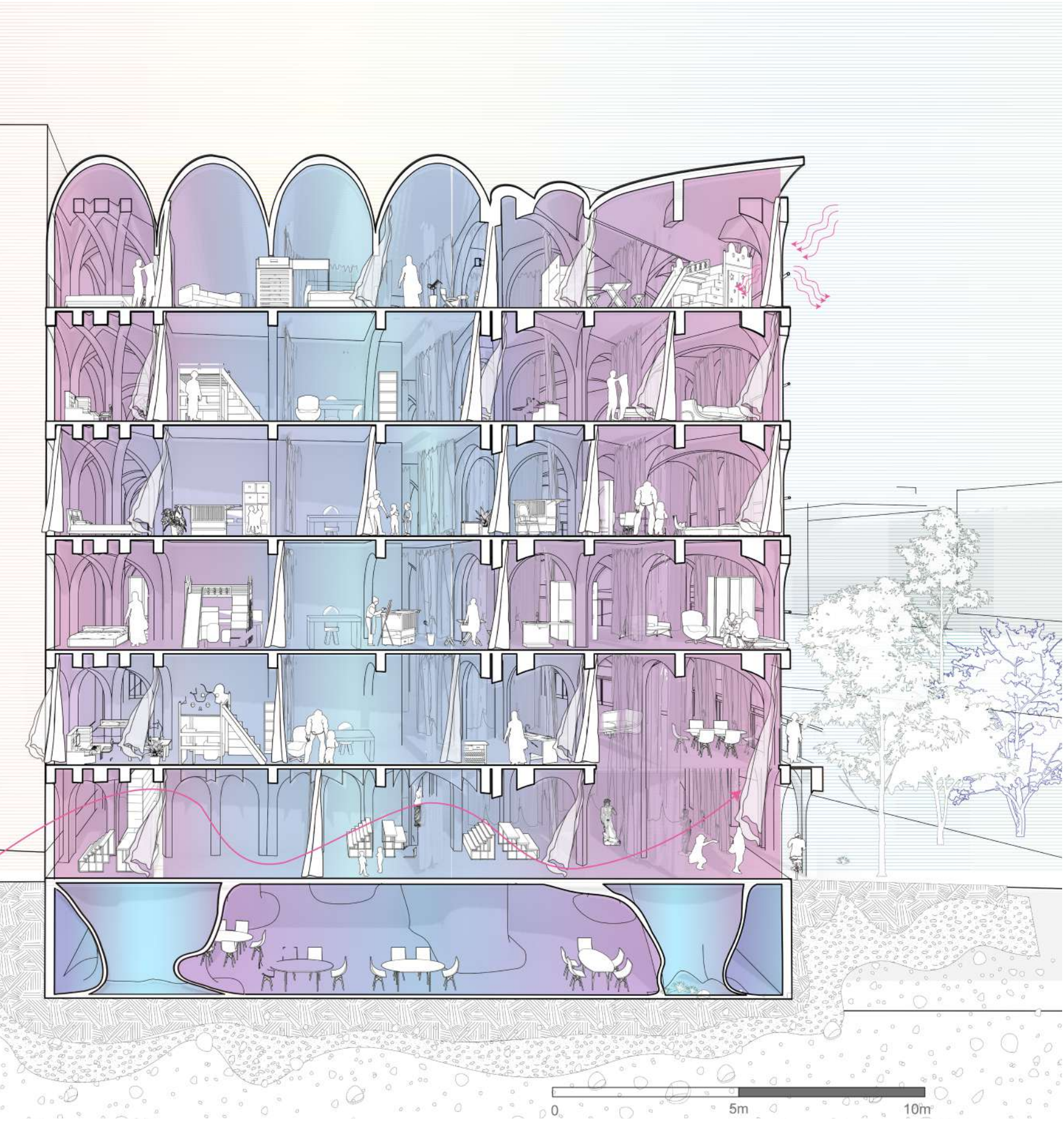
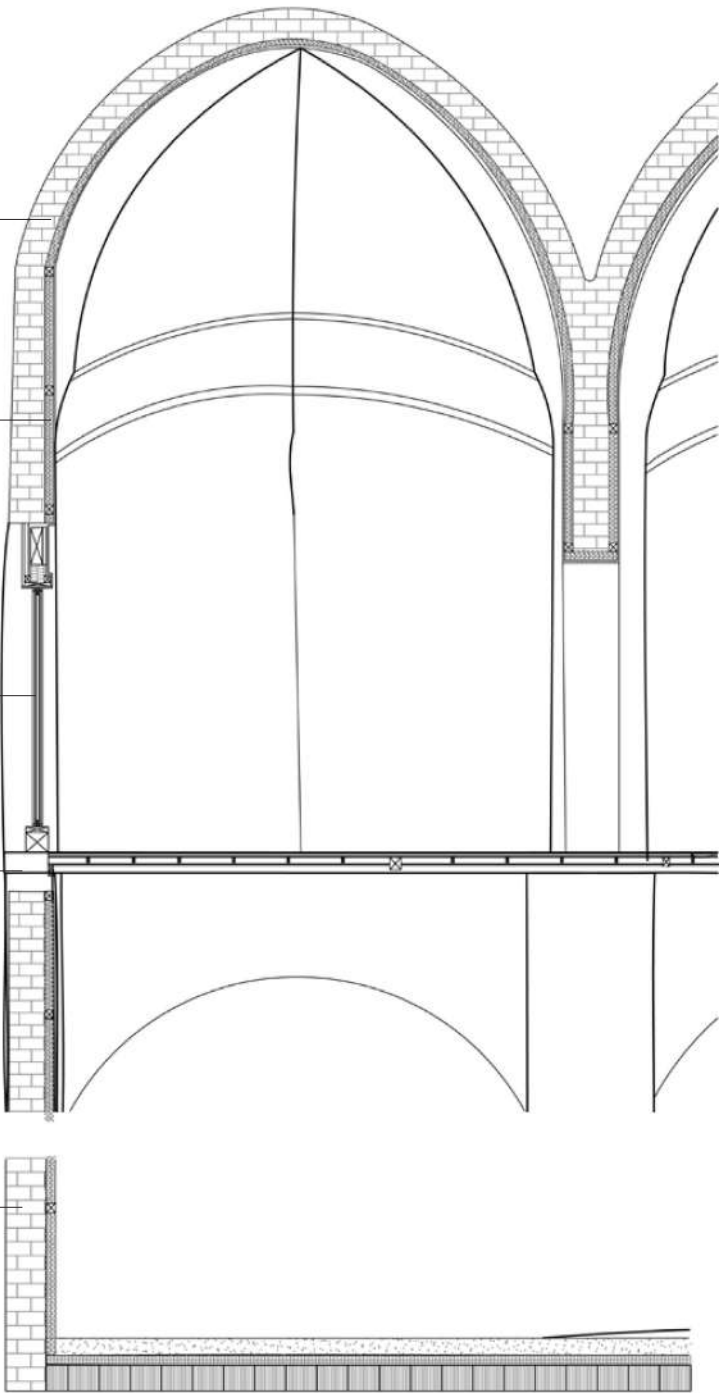
Vaulted Brick Arch Ceiling
Double-layered structural
vault constructed with
clay bricks in herringbone
pattern.

Brick Masonry Wall
(250mm thick)
Load-bearing brick wall
with lime or cement
mortar joints

Steel Tie Rod (Ø20mm)
Embedded to resist thrust
from arch vault.

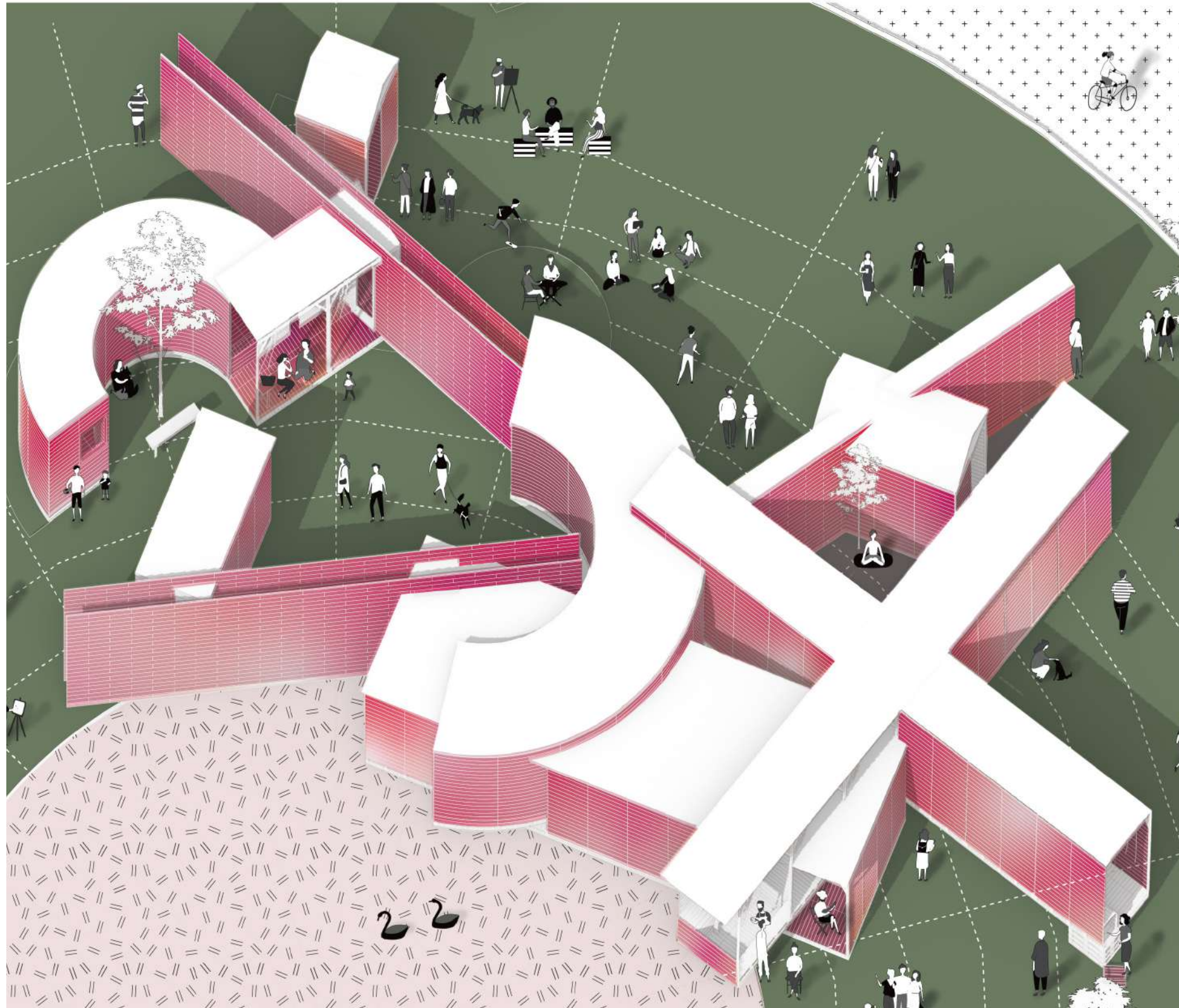
Thermal Insulation Layer
Extruded polystyrene
(XPS) board and mineral
wool (50mm)

Floor Slab with Screed Finish



LIVING SCENES





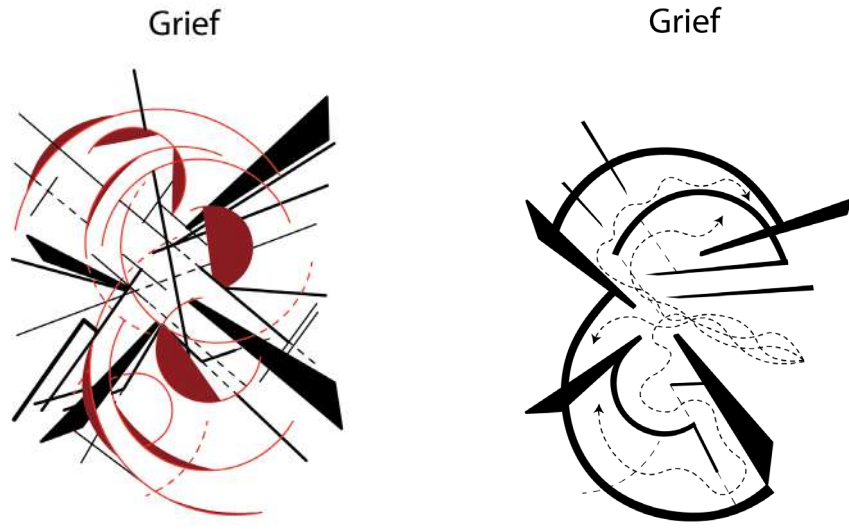
-03- HEALING WITH THE GENTLEGRACE OF WATER IN THE FUTURE'S FUTURE: Circa 2050

SP 2025 STUDIO
INSTRUCTOR:
LOCATION: NYC
INDIVIDUAL WORK

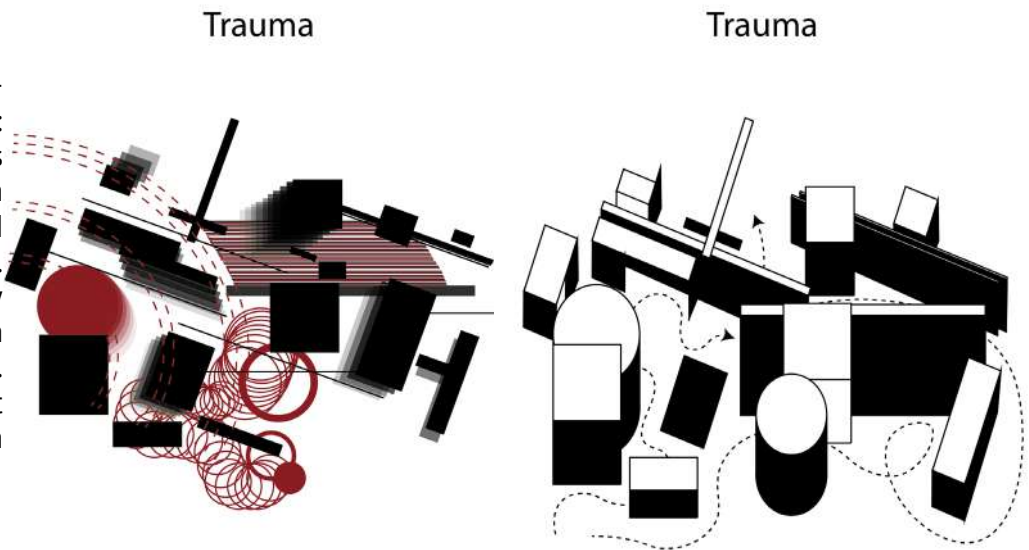
In response to the often static and monumental nature of traditional memorials, this project proposes a modular, community-assembled system for collective mourning. Originating from the death of twin public figures, the design recognizes grief as both a personal emotion and a shared social ritual. Lightweight, adaptable structures support a range of experiences—from private reflection to public gathering—accommodating the nonlinear, evolving nature of loss. Once dismantled, subtle traces remain in the landscape, embedding memory into the everyday.

Rather than seeking closure, this architecture creates space for ongoing remembrance and healing. It empowers individuals and communities to shape their own rituals of grief—transforming mourning into a participatory, civic act woven into the life of the city.

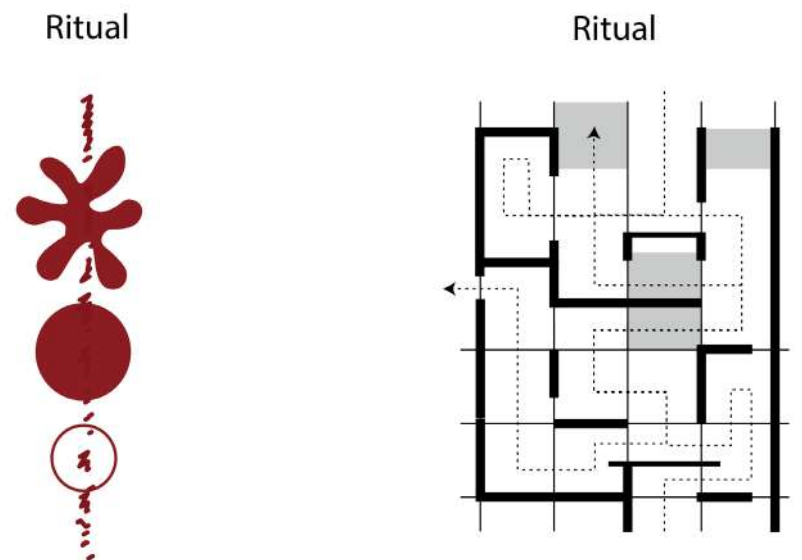
KEY WORD 1: Grief
DESCRIPTION:
 Grief unfolds in layers, like a slow cascade of emotional collapse upon hearing the death of a beloved celebrity. The first wave is empathy—projecting oneself into the shoes of their family and friends. Then comes the memory of your younger, passionate self who once adored them, realizing how that admiration helped shape who you are. The third layer cuts deepest: mourning not just a person, but a part of yourself reflected in them—an imagined self once aspired to. Grief, in this sense, becomes a set of piercing needles, each driving through deeper layers of emotional resonance.



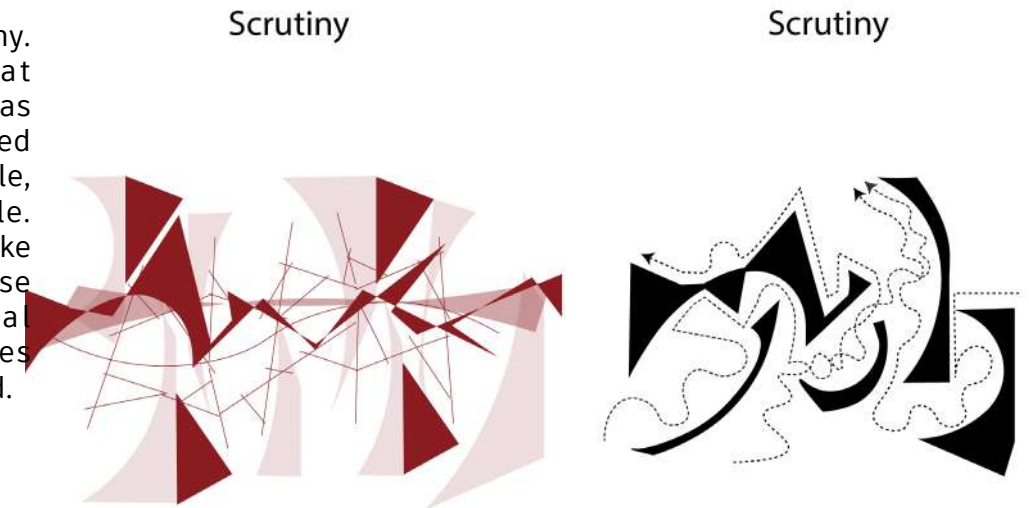
KEY WORD 2: Trauma
DESCRIPTION:
 Trauma emerges in fragments—triggered by the smallest of things: a color, a song, an object. Each holds the potential to recall the time when the star was alive and beloved, and you were, in turn, your former self. The present becomes infiltrated by a montage of memory—shards of a past self now rendered untouchable. These everyday encounters resurrect pain suddenly, chaotically, and often without warning.



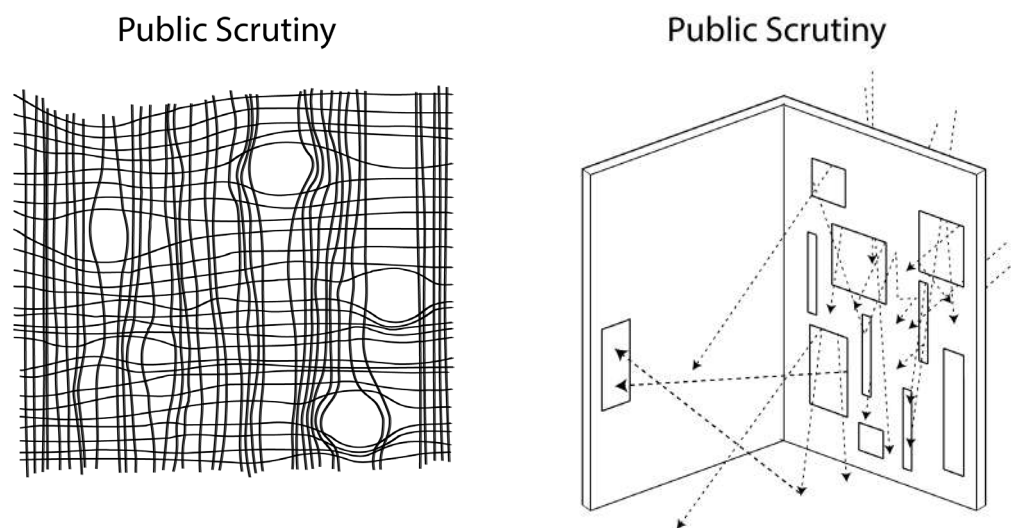
KEY WORD 3: Ritual
DESCRIPTION:
 The rituals of mourning are manifold—deeply cultural, deeply personal. Fans from varied backgrounds construct their own commemorative acts: lighting candles, reposting photos, creating tribute art. These parallel gestures resemble a grid—independent yet connected, forming a shared field of mourning that builds a collective architecture of remembrance.



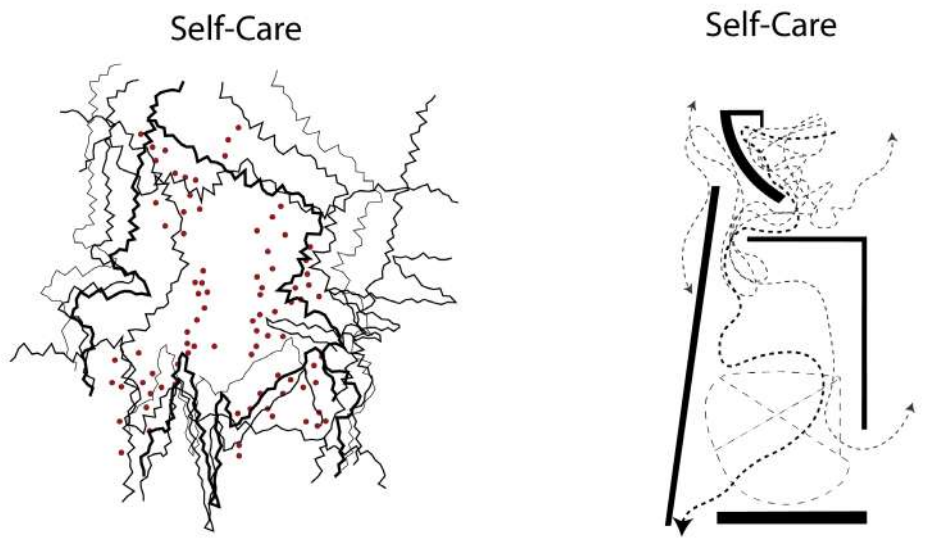
KEY WORD 4: Scrutiny
DESCRIPTION:
 To mourn publicly is to risk scrutiny. Even though studies show that celebrity deaths can evoke grief as intense as losing kin, the bereaved are often met with judgment—gentle, sarcastic, probing, or even hostile. These conflicting external gazes, like curving and crossing lines, impose upon the personal with social ambiguity. In grief, one becomes visible, vulnerable—and questioned.



KEY WORD 5: Public Scrutiny
DESCRIPTION:
 To be a public figure is to live in the architecture of surveillance. A celebrity's life—and death—is framed, dissected, and consumed. In design, this is captured through the density, size, and placement of windows: apertures of access and exposure. Public scrutiny is not only constant—it is structural.

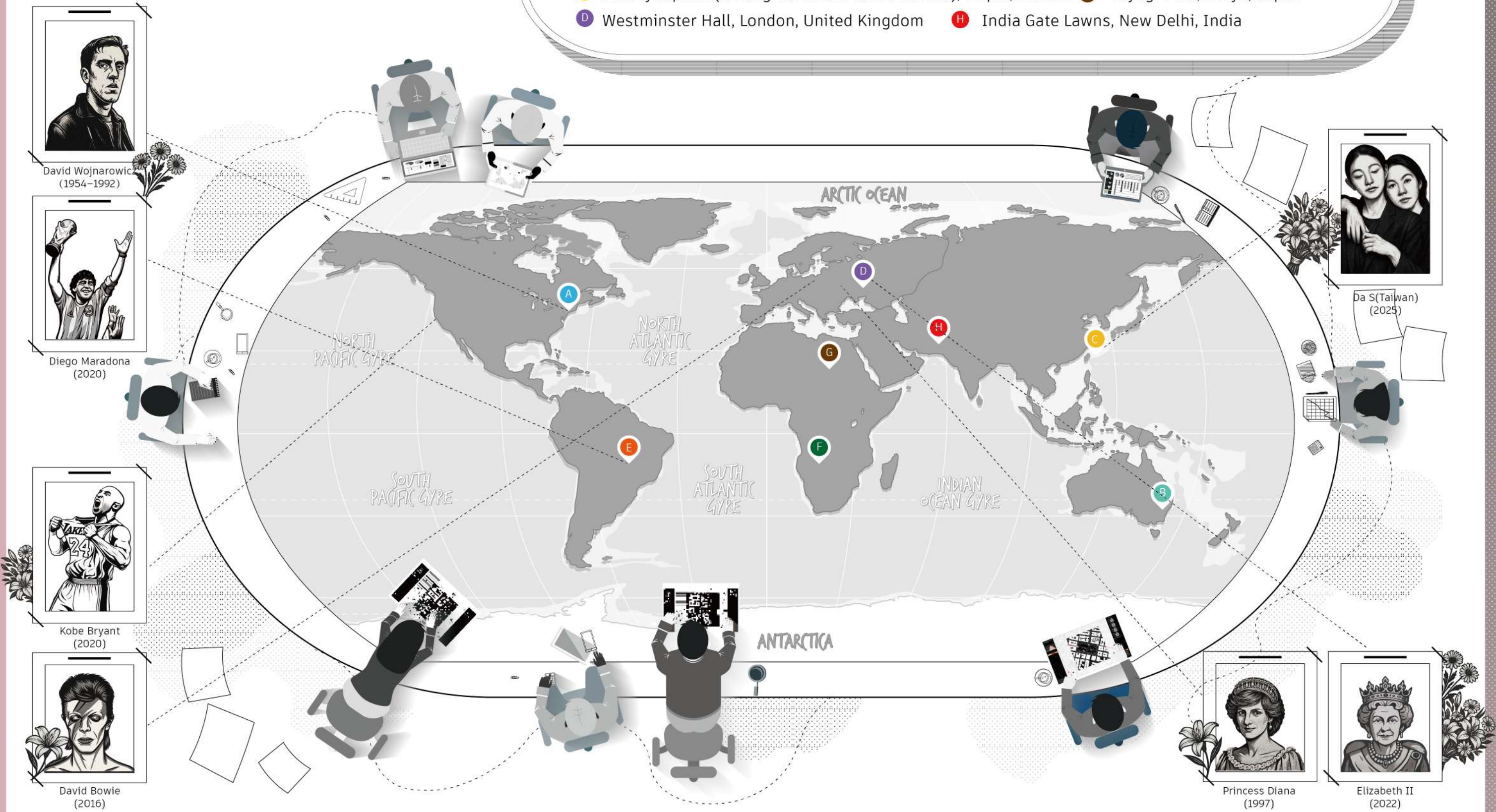


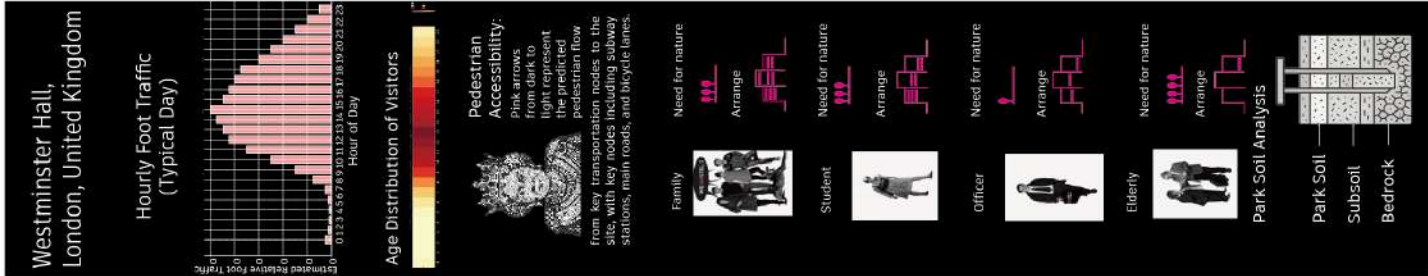
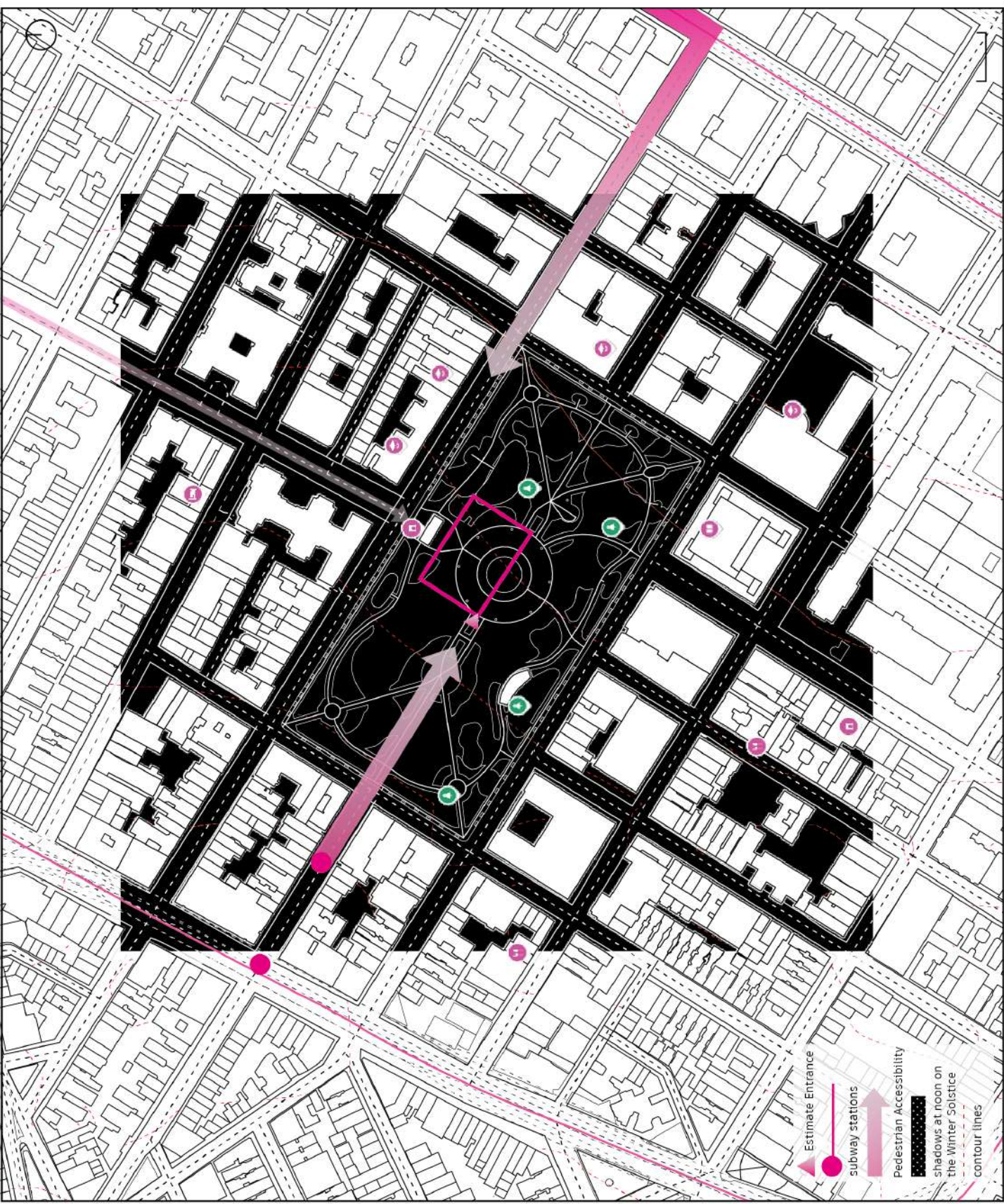
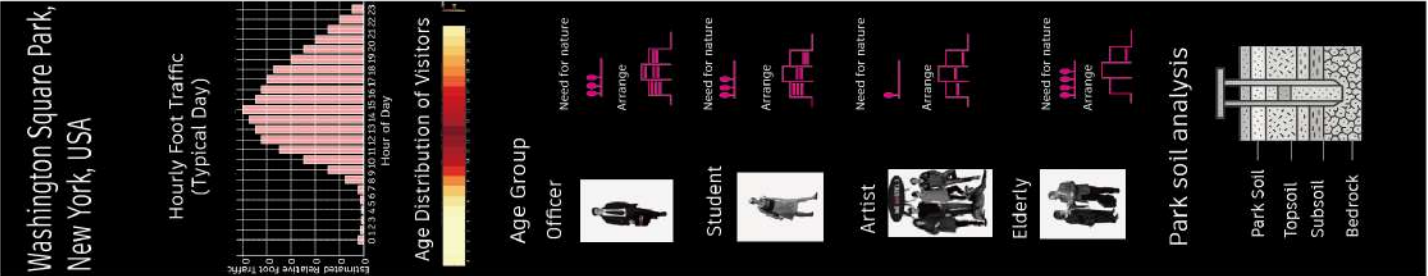
KEY WORD 6: Self-Care
DESCRIPTION:
 In profound sadness, self-care becomes an act of reclamation. It means having the agency to step away or stay immersed—to mourn on one's own terms. This design allows for optional thresholds: soft exits, quiet reentries. This is a space that acknowledges a one-sided love, yet respects the dignity of choosing how to process it.



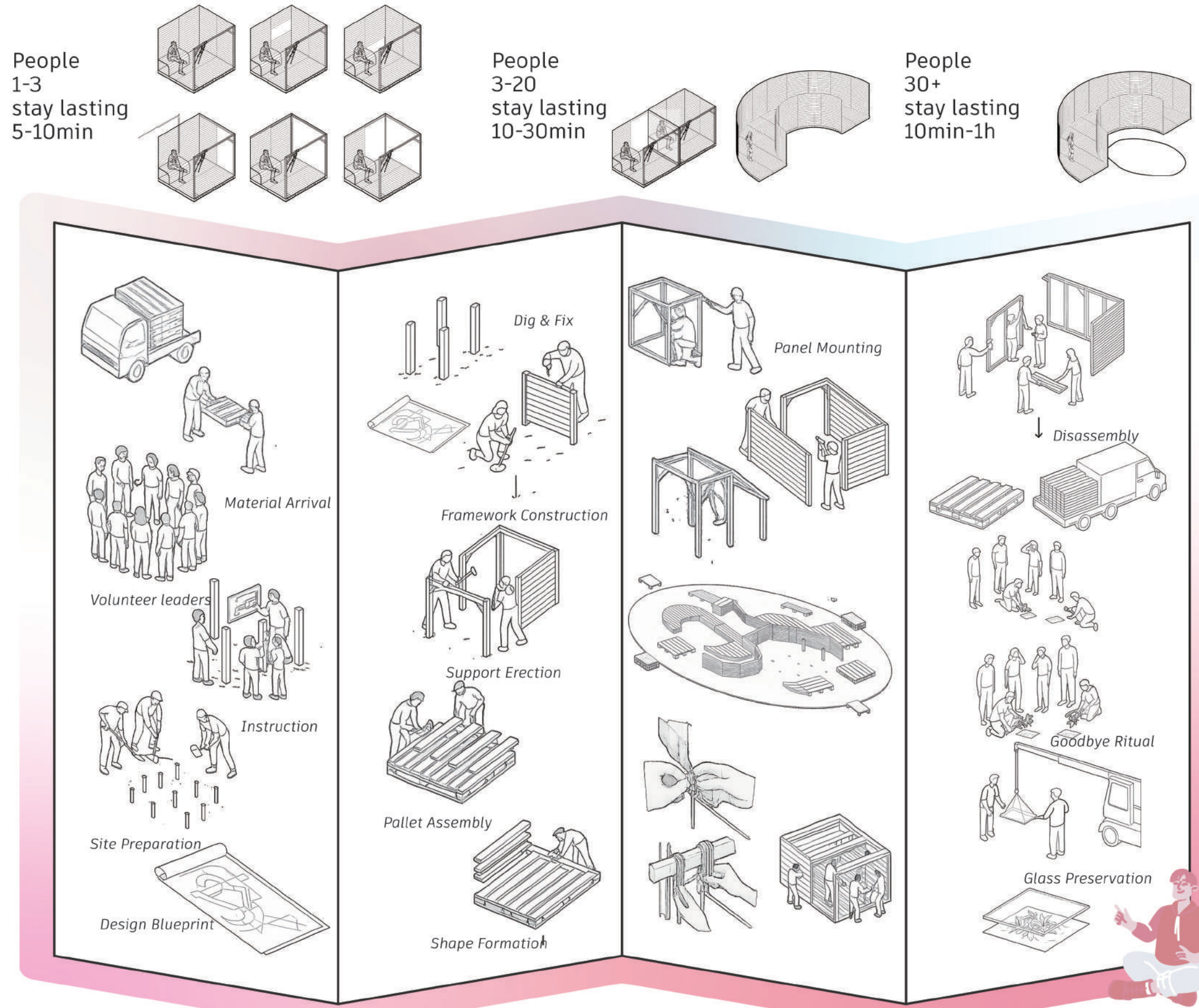
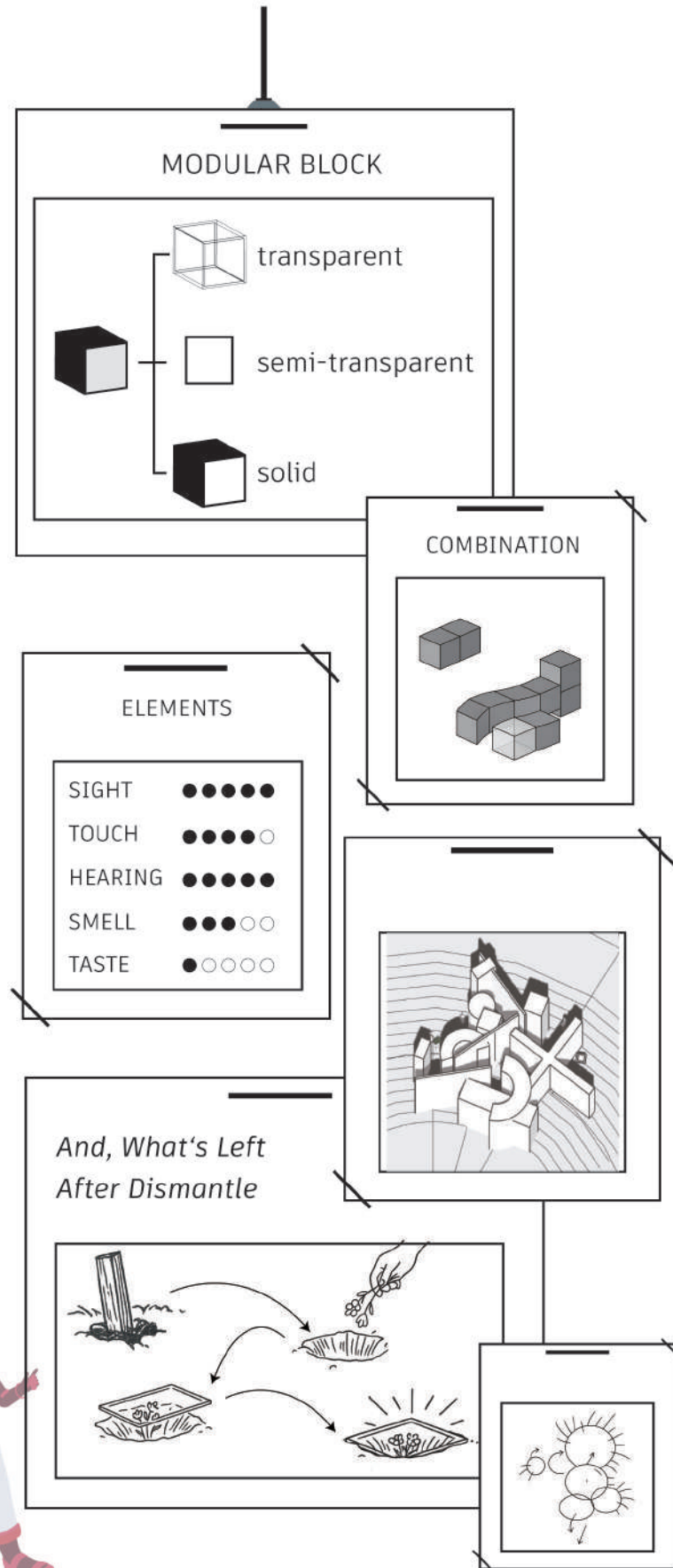
A drizzling, incessant, and damp rain:
Strategic Design Approach for
Grief and Bereavement
in Middle Adulthood Female Celebrities

- A Washington Square Park, New York, USA
- B Queen Victoria QVB Statue, Sydney, Australia
- C Liberty Square (Chiang Kai-shek Memorial Hall), Taipei, Taiwan
- D Westminster Hall, London, United Kingdom
- E Plaza de Mayo, Buenos Aires, Argentina
- F Victoria & Alfred Waterfront, Cape Town, South Africa
- G Yoyogi Park, Tokyo, Japan
- H India Gate Lawns, New Delhi, India

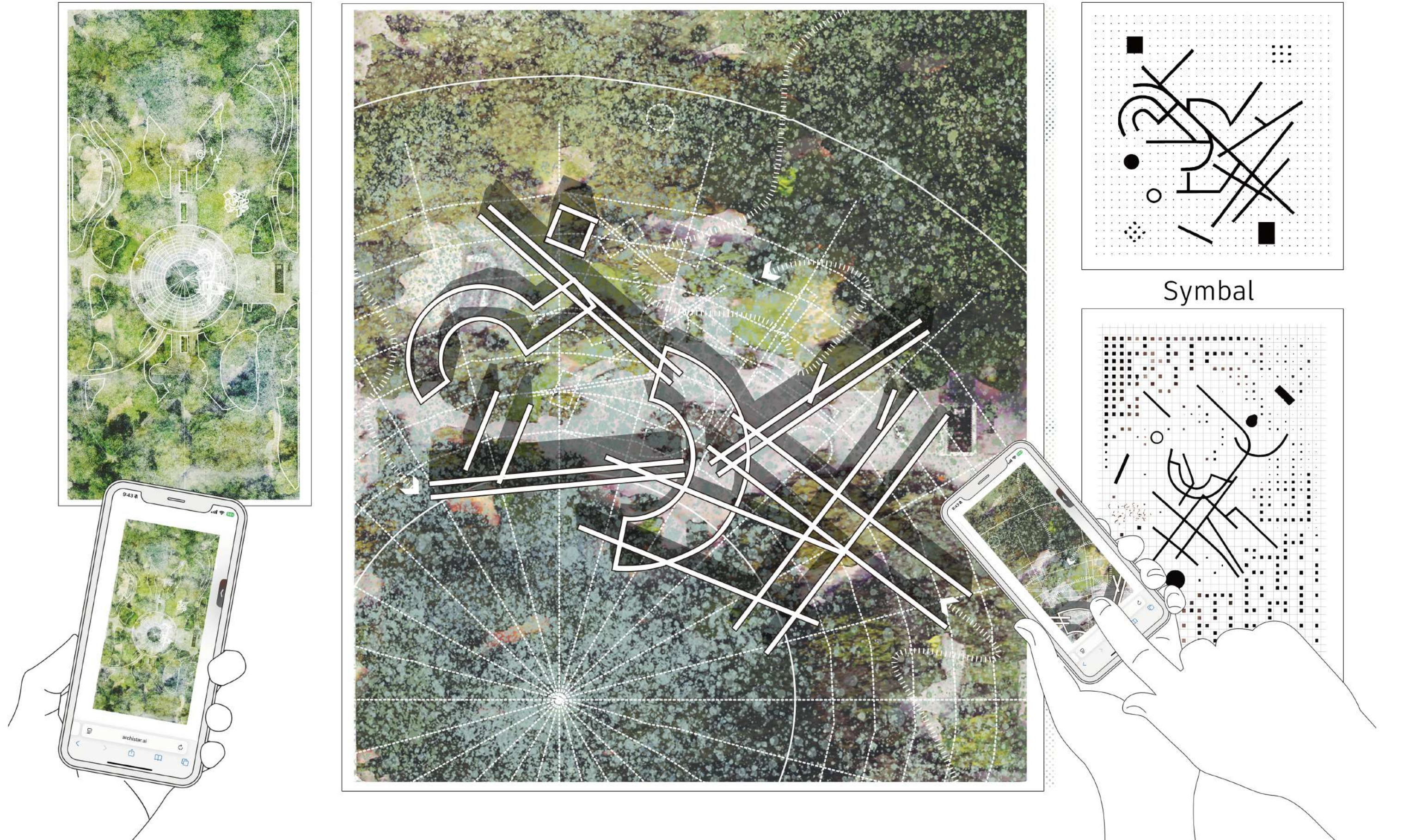




GUIDE BOOK



MAPS



- ☒ Month
- ☐ Monthly Descriptions
- ☐ workload
- ☐ pictures

1



2

February – Material Arrival
Wood pallets are delivered. A handshake marks the start. Volunteers begin organizing roles.



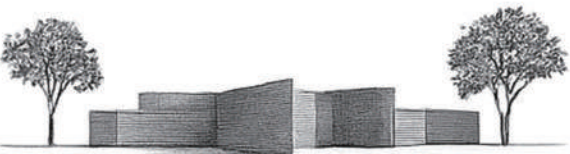
3

March – Ground Preparation
Fans help dig holes and install wooden posts based on the floor plan, laying the groundwork for the structure.



4

April – Partial Construction
The form starts to rise. Pallets are shaped into curves, expressing collective memory through hands-on building.



5

May – Structural Weaving
The walls are fixed, string curtains are hung. The space becomes semi-enclosed and emotionally charged.



6

June – Public Ceremony
The structure reaches its peak. People gather to mourn, speak, photograph, or simply sit together in silence.



7

July – Everyday Use
As summer blooms, the space becomes part of daily life—used for rest, reflection, or quiet interaction.

8

August – Peak Activity
Fans take photos, write messages, and interact. The site is filled with energy and quiet reverence.

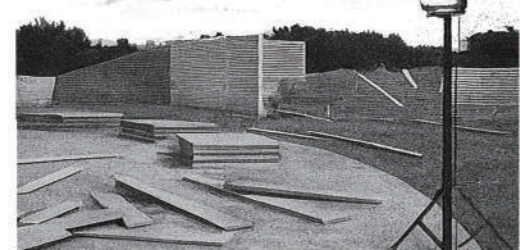


9

September – Transition
Foot traffic slows. Leaves accumulate. The structure softens into the background of the city.

10

October – Dismantling Begins
Parts of the installation are removed. The structure slowly dissolves, piece by piece.

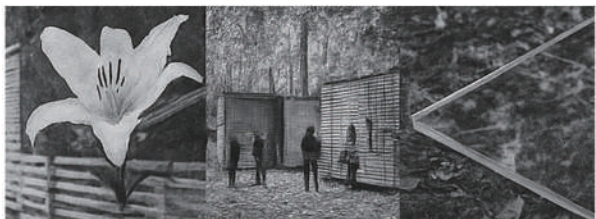


11

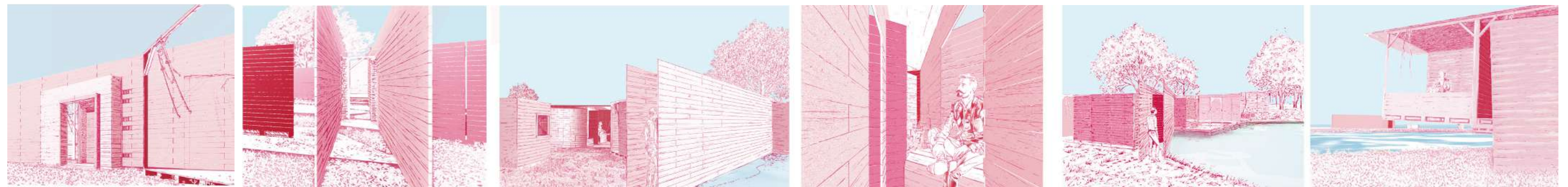
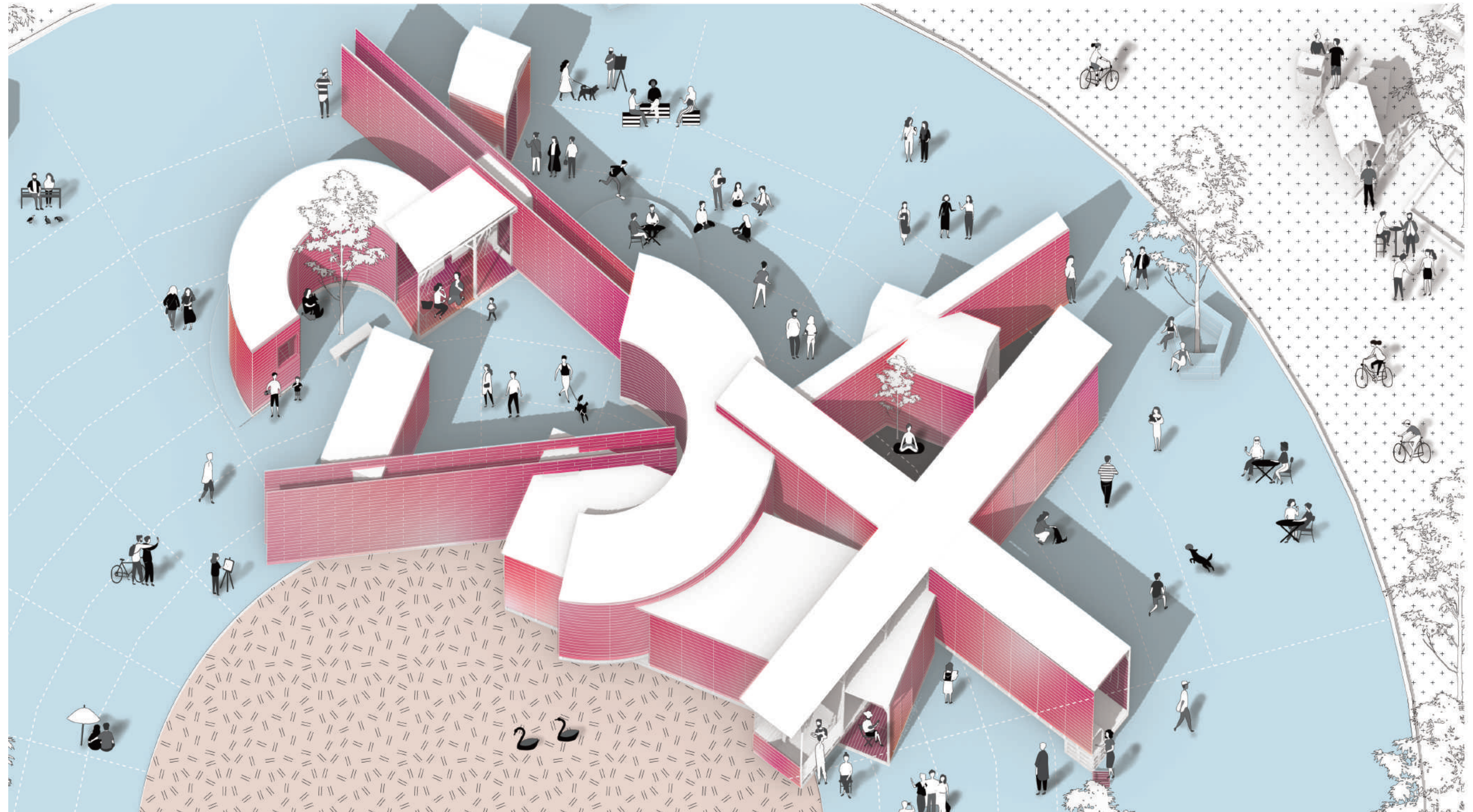
November – Floral Tribute
Lilies are placed into the post holes left behind, a final gesture of remembrance.

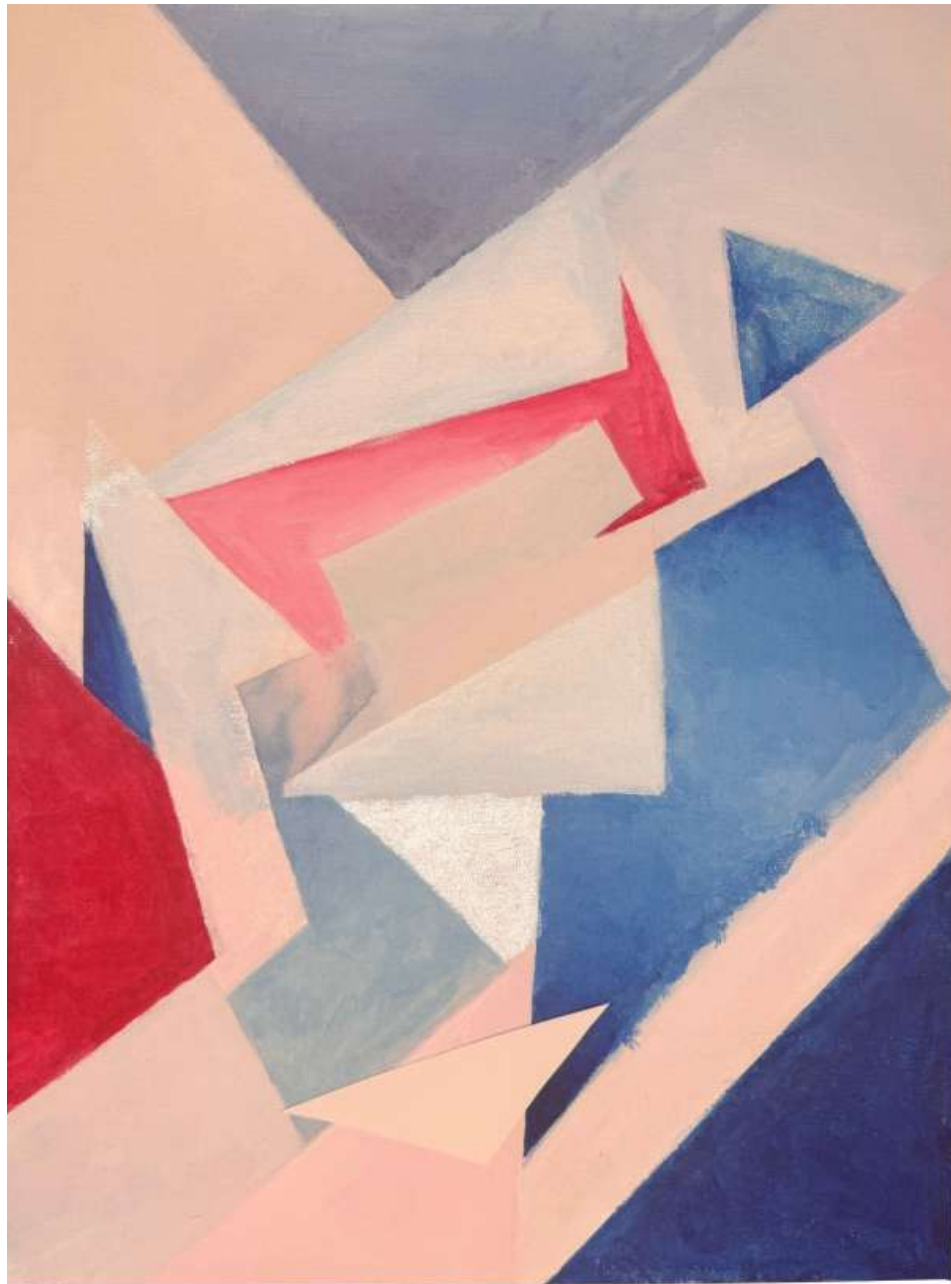
12

December – Memory Sealed
A glass panel is gently placed over each hole, sealing the flowers and memories within the land.



SCENERY





Space Force Construction in Blue and Red,
Acrylic, 18*24.



-04- From Canvas to Construct

Liubov Popova and the Language of Spatial Composition

SP 2025 SEMINAR
INSTRUCTOR: STEVEN HOLL, DIMITRA TSACHRELIA
INDIVIDUAL WORK

Amid the urgency of pre-revolutionary Russia, Liubov Popova forged a radical artistic path—from Cubo-Futurism's dynamic geometries to the spatial abstraction of Suprematism, and finally to the socially engaged practices of Constructivism. Her "painterly architectonics" fused form, color, and motion into constructed space.

By 1921, she moved beyond the canvas, designing textiles, theater sets, and printed matter. Her scenography for *The Magnanimous Cuckold* and modular fabric patterns embodied a logic of repetition, materiality, and biomechanical space.

Popova's evolution from painting to production reflects a restless, experimental ethos. Inspired by her methods, I experiment with tearing, folding, and layering to evoke structure, rhythm, and transformation—extending her vision into a new design language of spatial depth and transformation.reality through planes, color, and motion.

