



J e a n T z e n g

design, in my view, is essentially an act that proposes an alternative: a new way to memorialize an event / a new mode of social interaction / a new form of cross-species encounter. (tzeng, 2020)

become an applied anthropologist in the field of architecture (ibid.)

aspire to be-

similar to anthropology, the practice of design speculates on the world as a lived experience. (ibid.)

through building (ibid.)

- 01 Fluid Sanctity**
Fall 2023
East 116th Street, New York, New York

- 02 Buzzing Orchard**
Spring 2023
Orange County, New York

- 03 Co-Corridor**
Fall 2022
Bronx, New York

- 04 Garden Commons**
Fall 2020
Houston Street, New York, New York

- 05 Keeping Memories Alive**
Spring 2024
Taipei, Taiwan

- 04

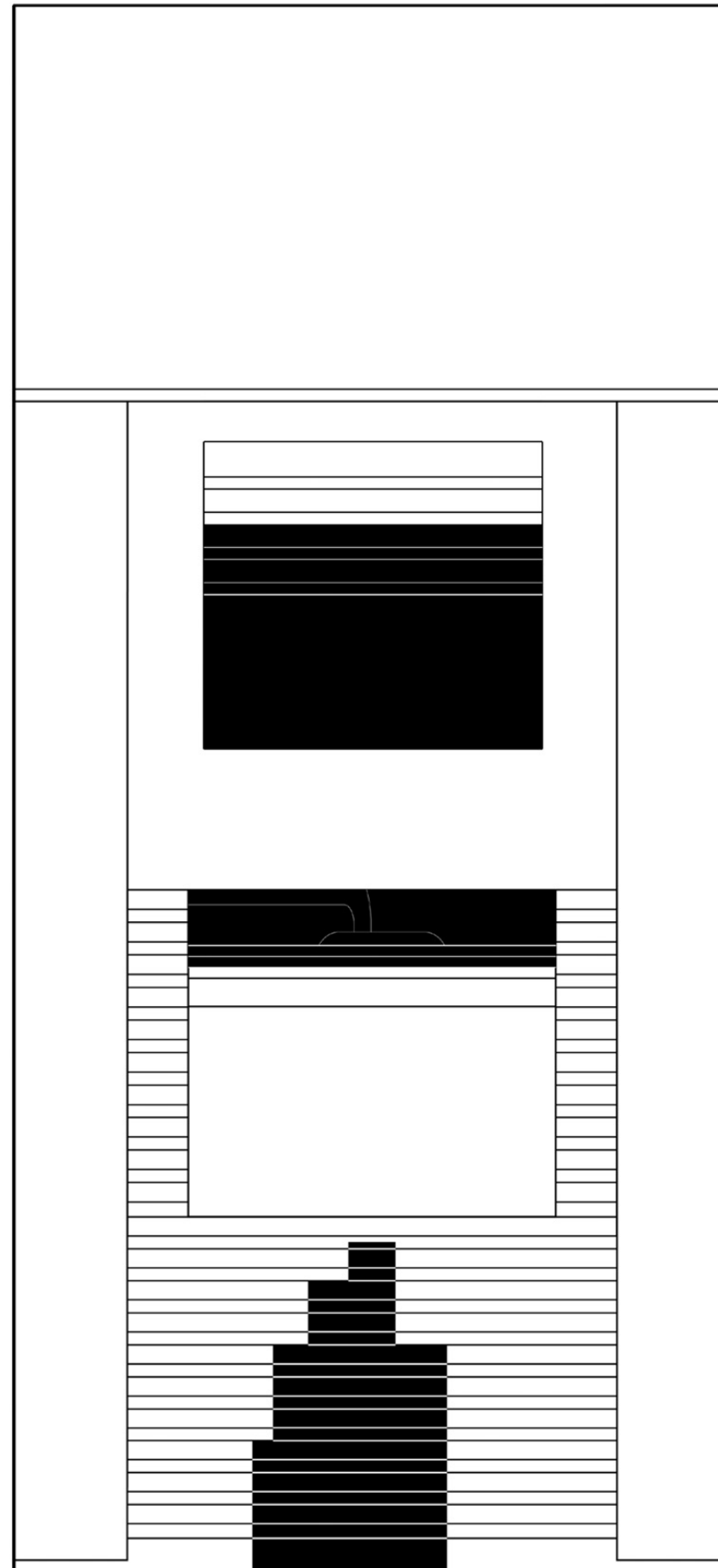
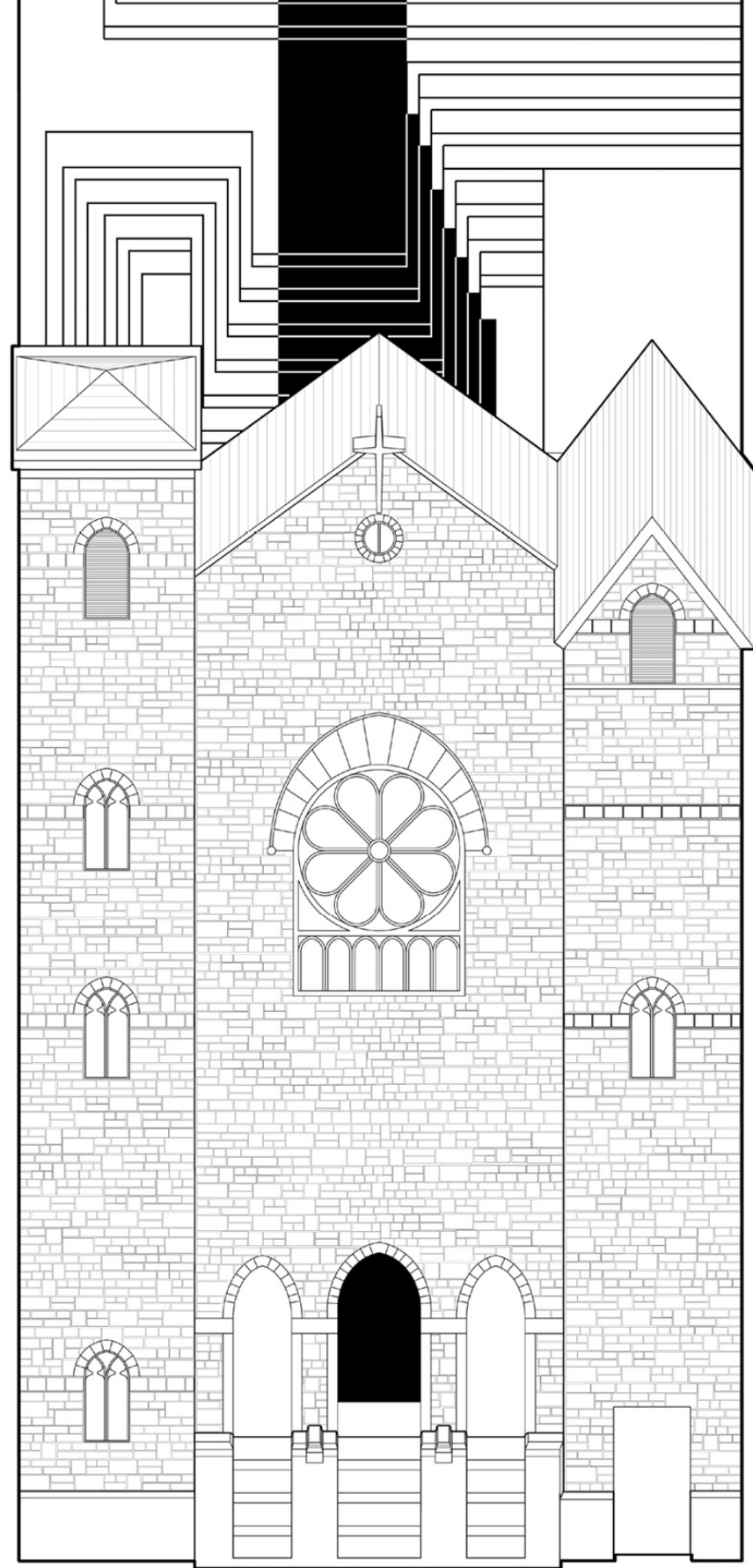
- 16

- 26

- 36

- 48



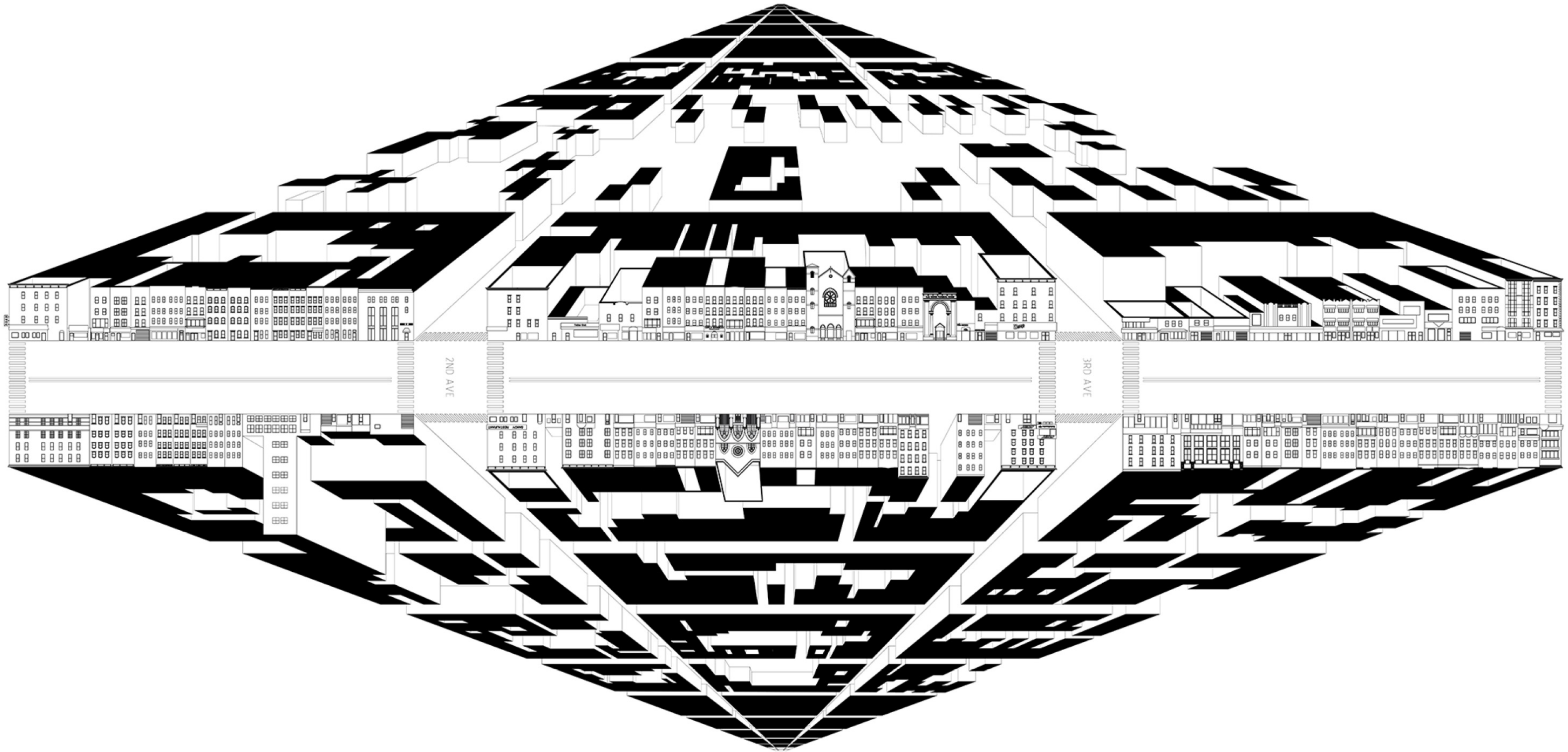


Fluid Sanctity

FALL 2022 ADV V
Critic: Rozana Montiel + Thomas De Monchaux

This studio envisions the realm between the possible and the impossible: a practical fantasy. In response, I indulge in inspirations I feel personally connected to, infusing them into this project, including Alejandro Jodorowsky's film *The Holy Mountain*, Milan Kundera's novel *The Unbearable Lightness of Being*, and Émile Durkheim's theories on religion. The result is a church intervention project that seeks to acknowledge various approaches to spirituality.

By incorporating facilities that serve a larger population and providing various sensory experiences with water, this project redefines the conventional sacred space, transforming the church into a hub where diverse activities coexist, fostering a sense of community and spiritual connection amidst the urban landscape.

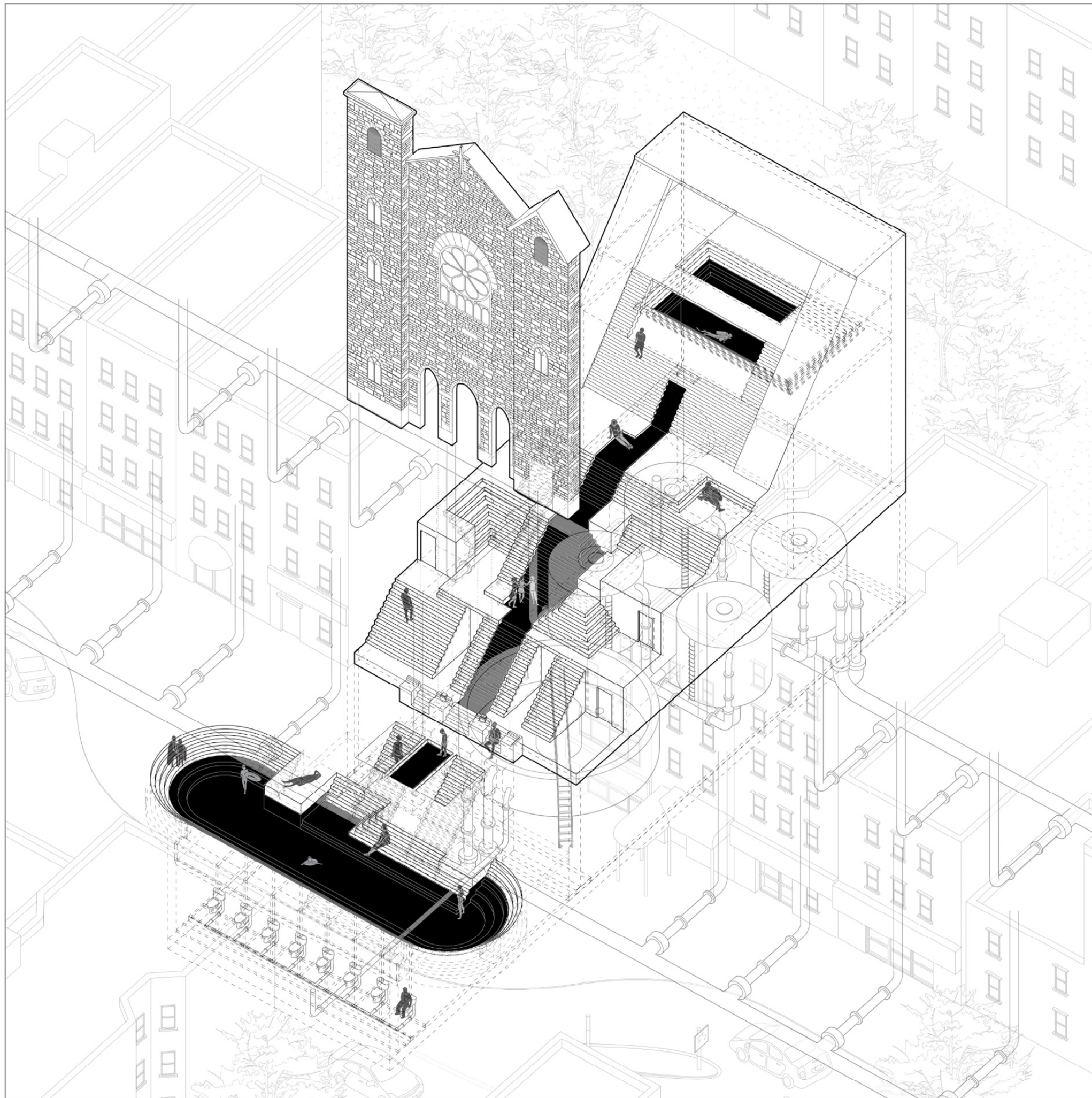


Nolli Map of East 116 Street

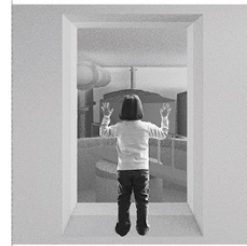
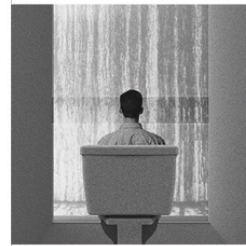
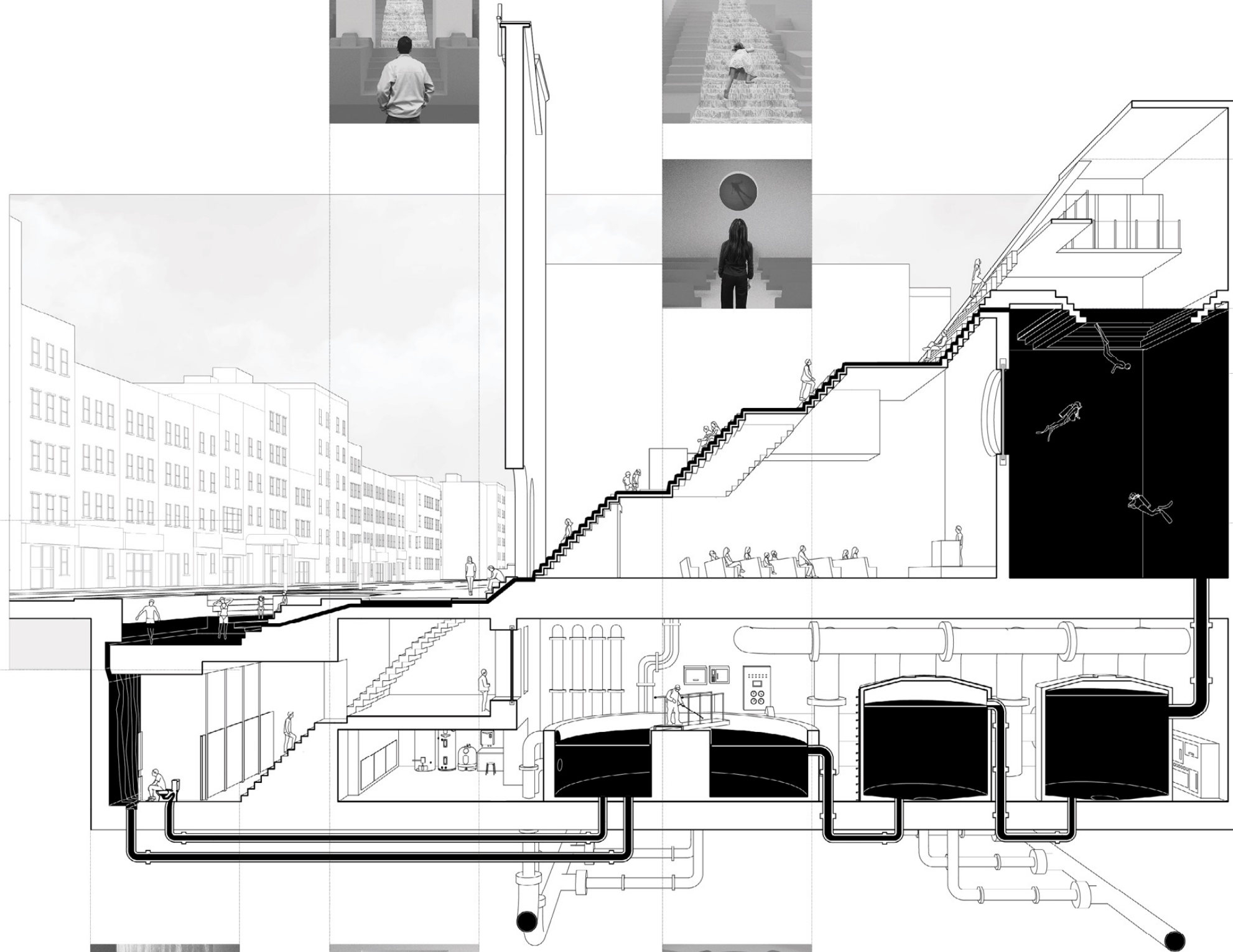
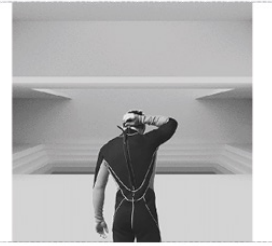
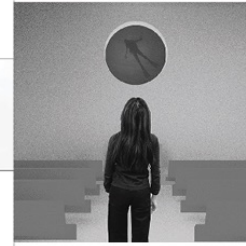
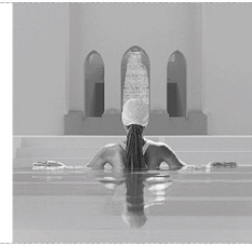
Semi-public spaces such as church, supermarket and restaurants are marked as void to suggest the spaces' relative permeability

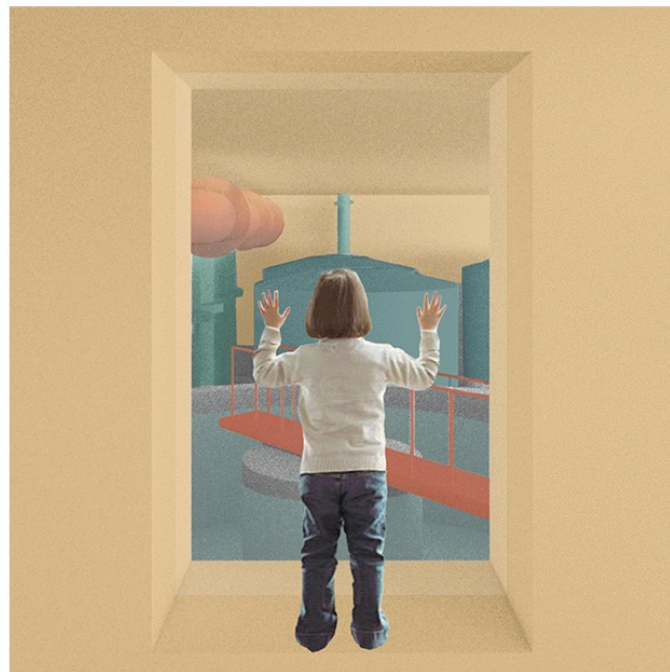
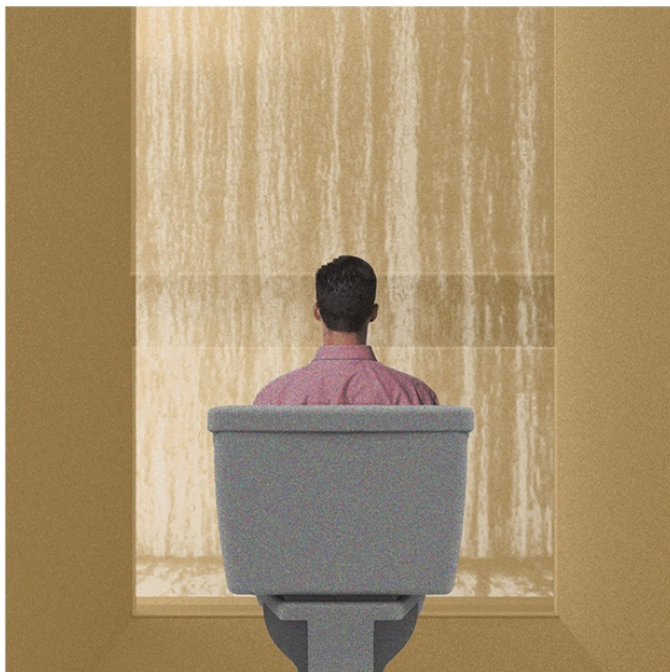
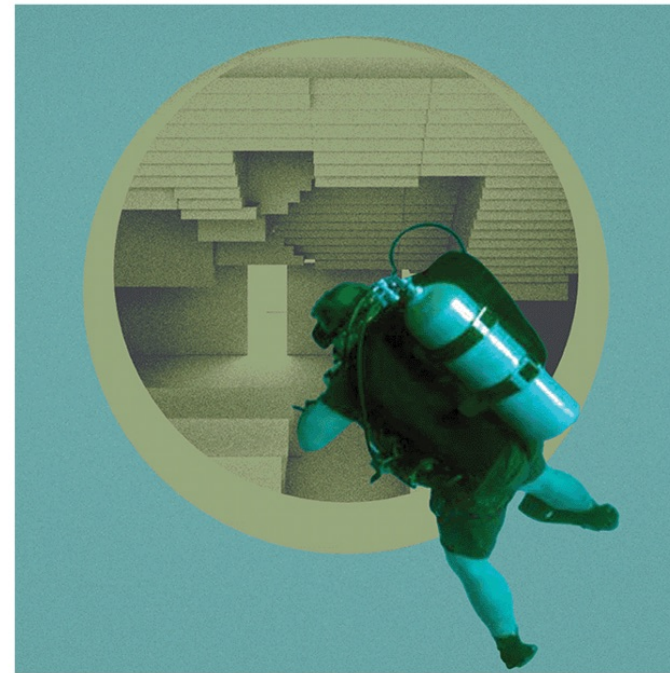
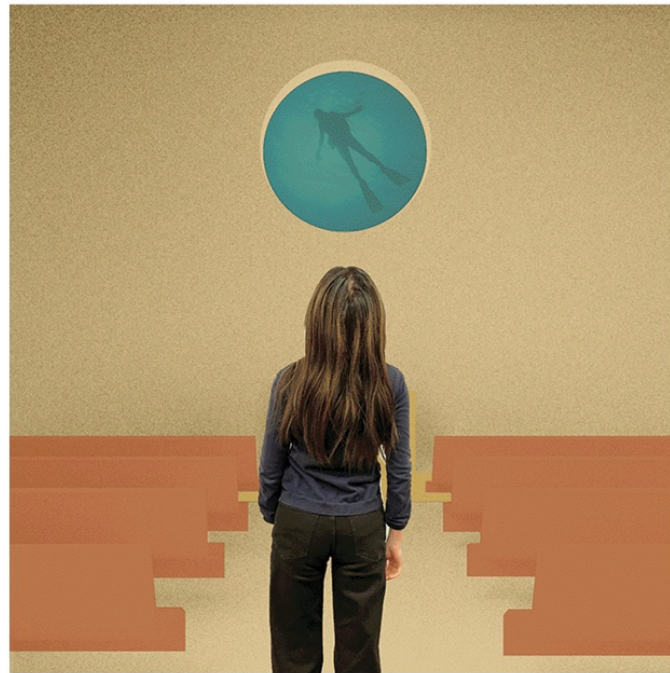
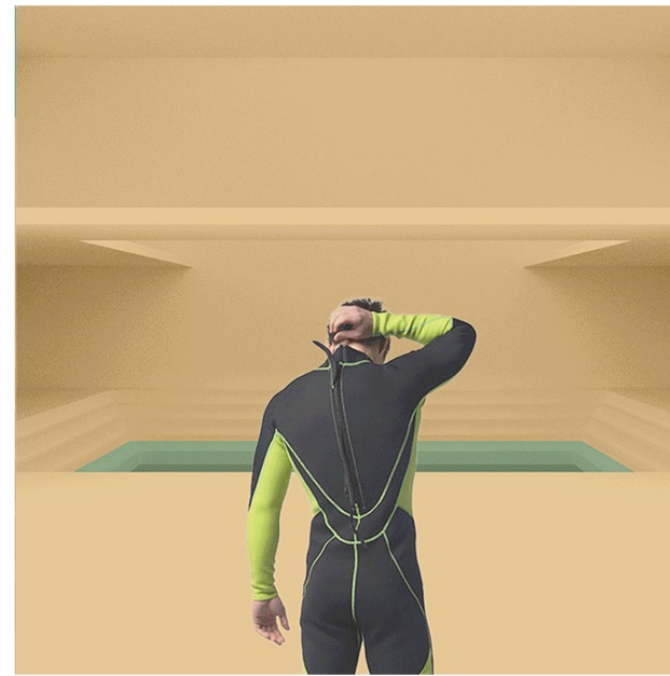
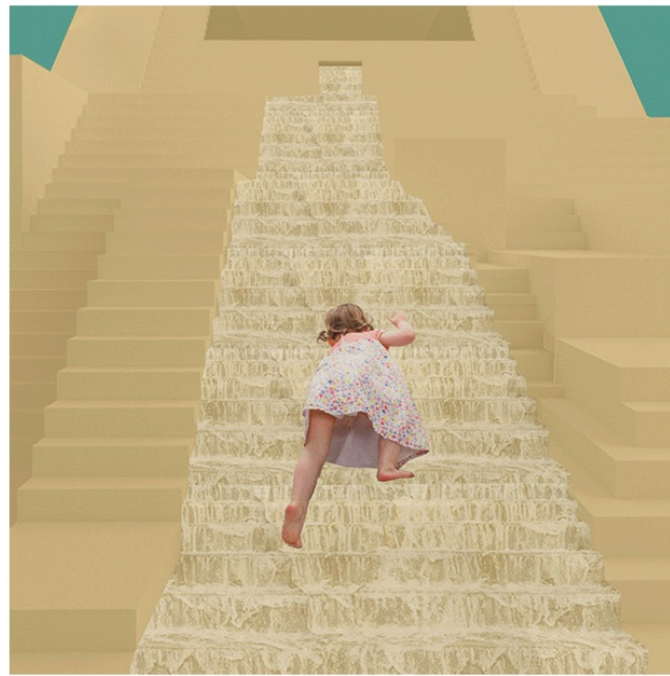
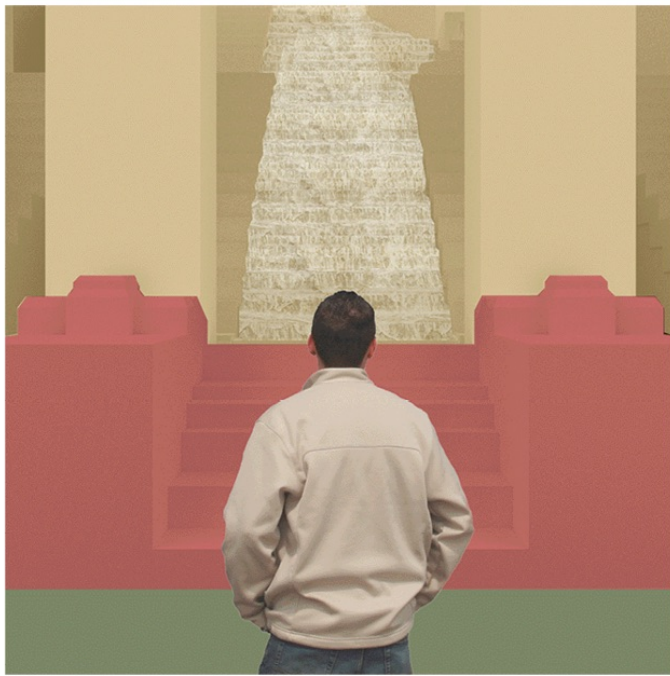


Located in Harlem's Little Mexico, the existing Baptist church faces a decline in attendance, leading to the underutilization of its space. Meanwhile, the church's front staircase has been popular and highly utilized—essentially a street furniture on which people casually rest, regardless of the church's service hours—embodying a generosity absent in regular storefronts. Leveraging this generosity, the project aims to provide more of such hospitality to serve the neighborhood.



With the existing front staircase extending itself to eventually form a Mexican pyramid, the church space humbly decreases in volume to accommodate other programs, including a scuba diving school offering an alternative spiritual experience to baptism, a water treatment plant purifying the facility's water as well as serving the nearby neighborhood, and an abundance of public toilets enjoying a view of a waterfall, with the waterfall filtering out noises for meditation.





1	2	3
4	5	6
7	8	9

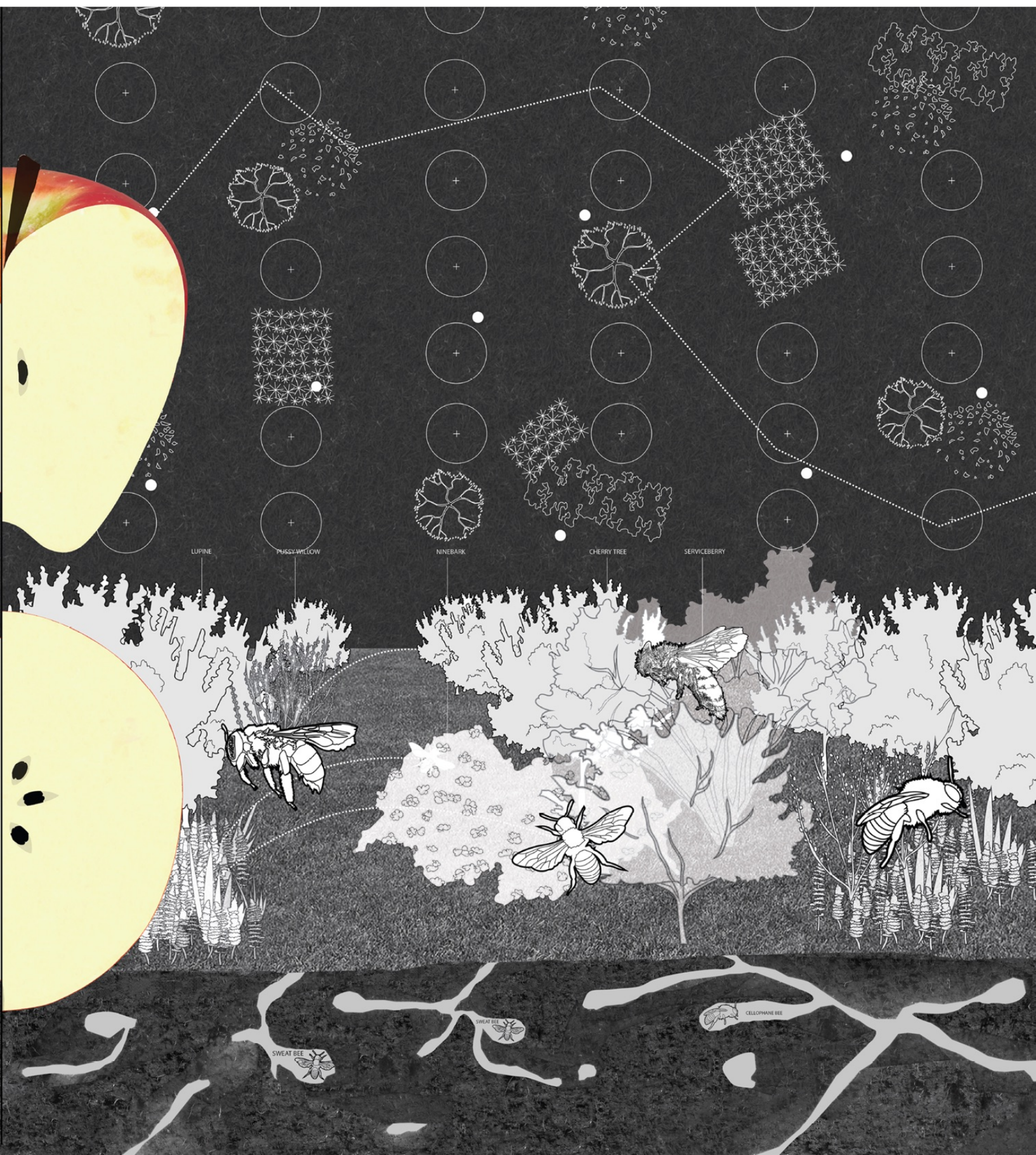
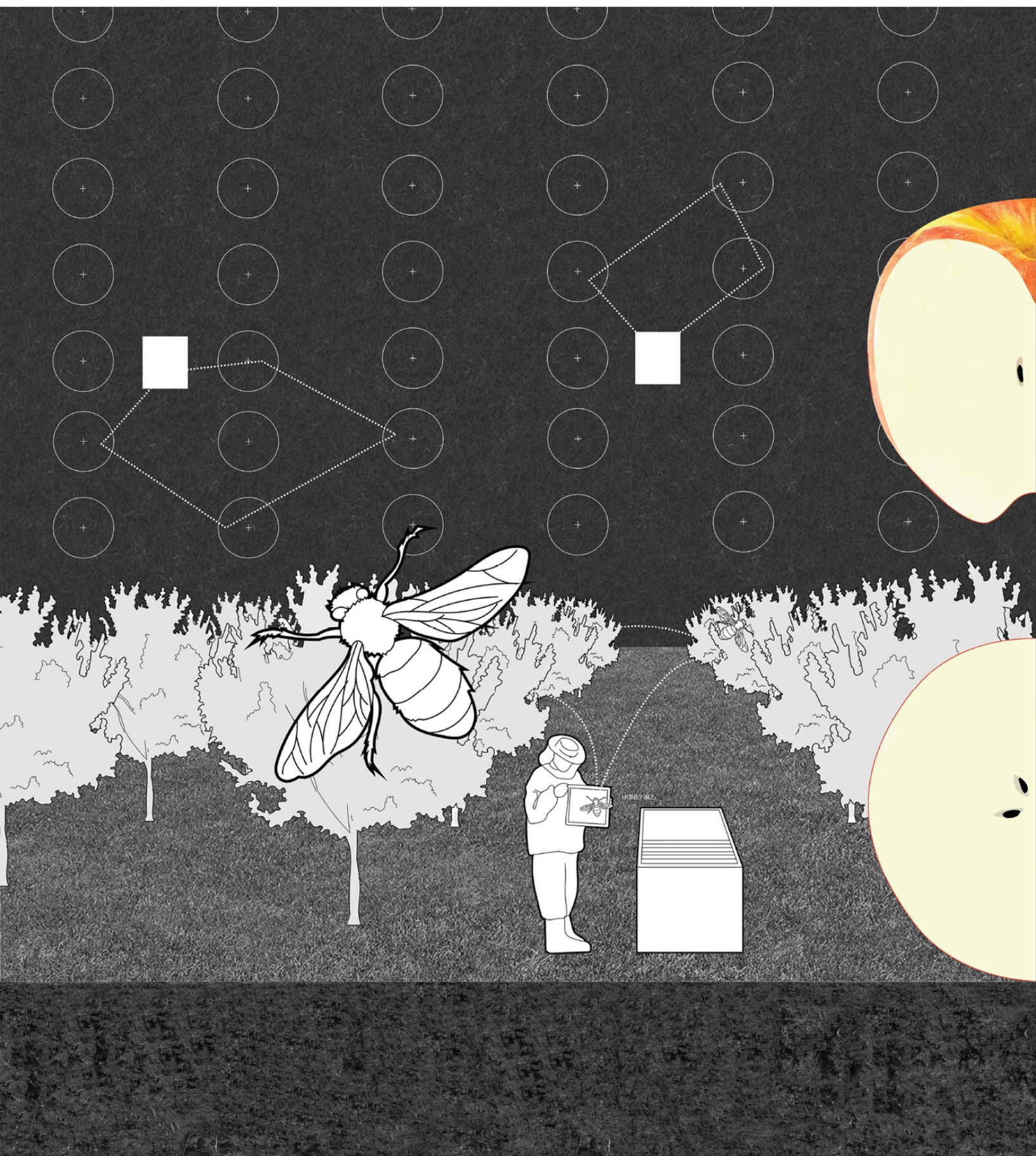
1. On 116th street
2. On the pyramid
3. At the Scuba Diving School
4. In the Street Pool
5. In the Church
6. In the Scuba Diving Pool
7. Waterfall Meditation Restroom
8. Window to Water Treatment Plant
9. Water Treatment Plant

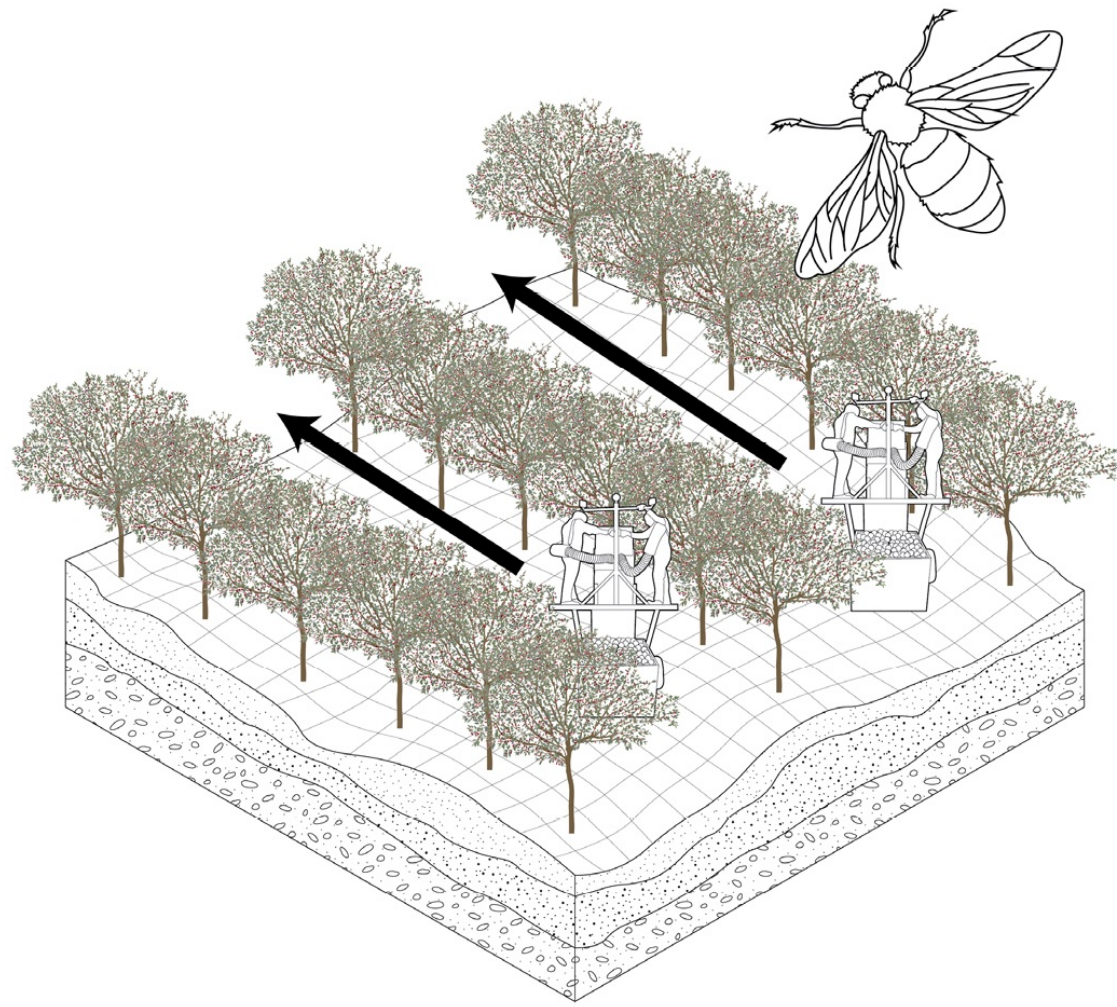


Buzzing Orchard

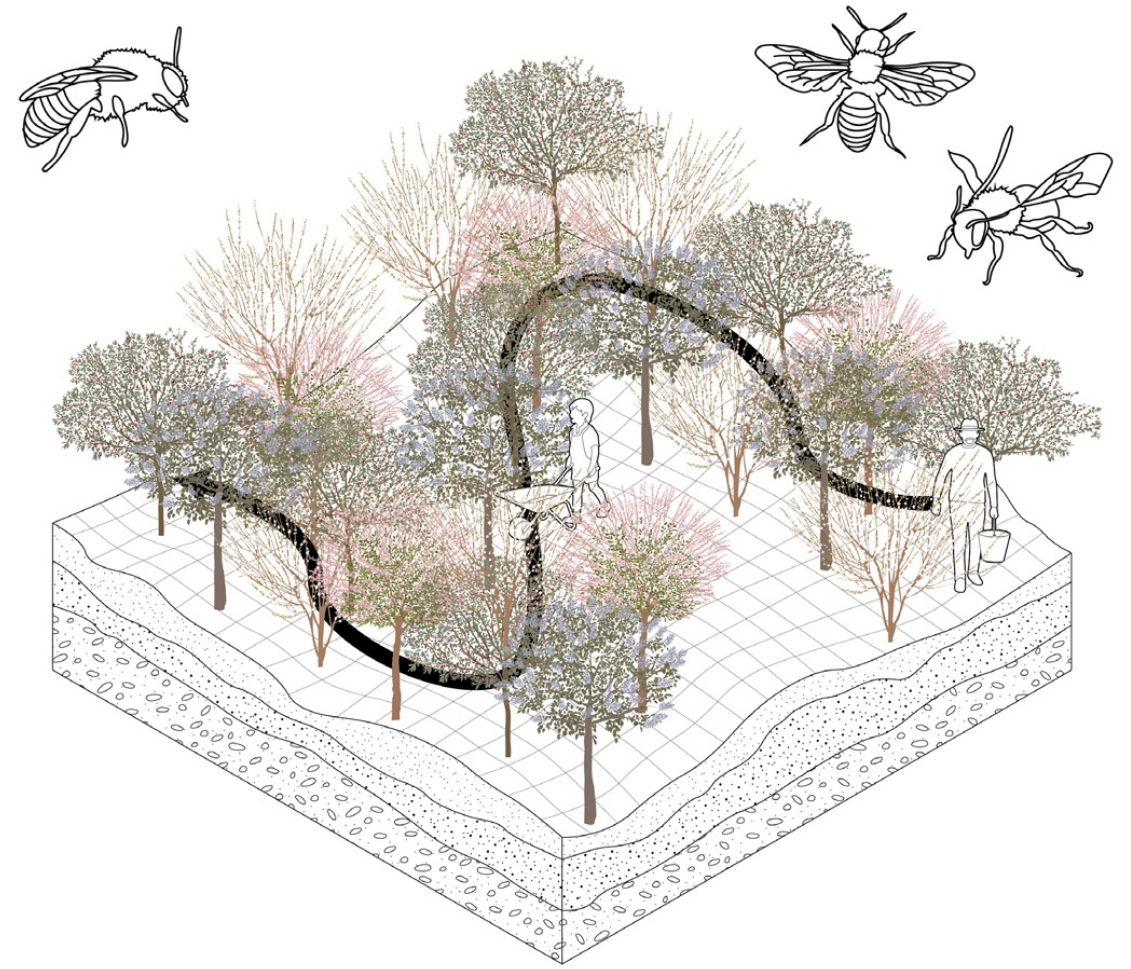
SPRING 2023 ADV IV
Critic: Feifei Zhou

This project reimagines Appleridge Orchard in Orange County, New York, shifting from intensive farming to a sustainable model that supports native bee populations. Inspired by studies showing the superior quality of apples pollinated by native bees, the redesign features a park-like layout conducive to strolls and gatherings, and introduces polyculture practices. This approach, focusing on U-pick experiences and a Community Supported Agriculture (CSA) model, compensates for the financial challenges posed by less efficient harvesting. By enhancing biodiversity and fostering community engagement, the project aims to educate and connect people with sustainable agricultural practices.

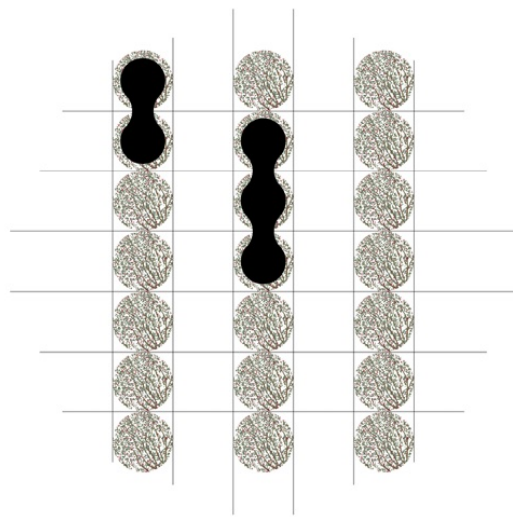




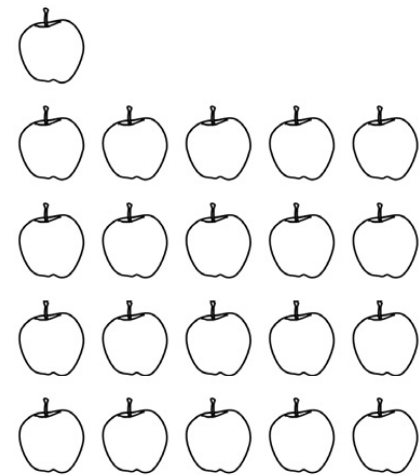
CONVENTIONAL (APPLE TREES ONLY)
 EASIER FOR MECHANICAL APPLE HARVESTING
 RELIANT ON HONEY BEES ONLY AND MORE VULNERABLE



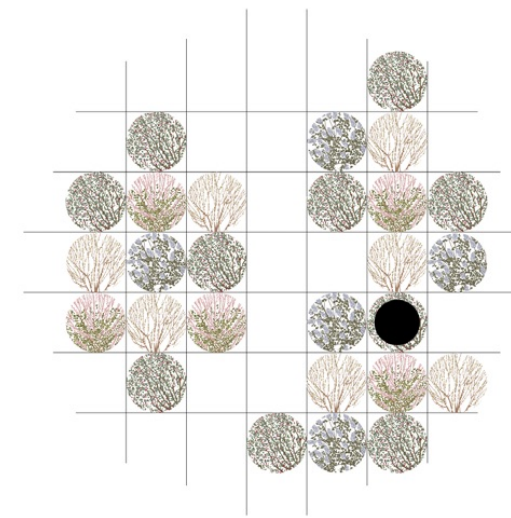
PROPOSAL (DIVERSE POLLINATOR-FRIENDLY FRUIT TREES)
 INEFFICIENT FOR MECHANICAL HARVESTING
 ATTRACT VARIOUS WILD BEES AND MORE SUSTAINABLE



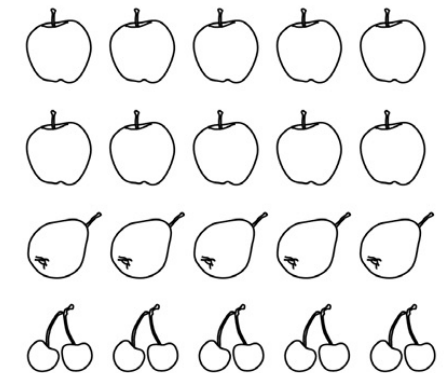
DISEASE SPREADS EASILY
 AMONG THE SAME TREE SPECIES



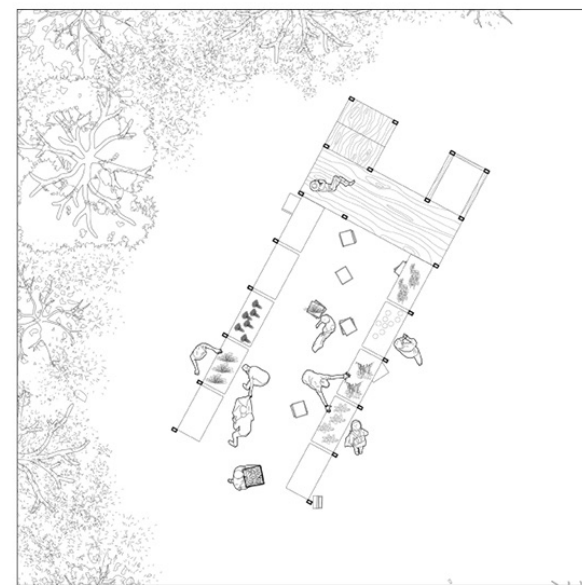
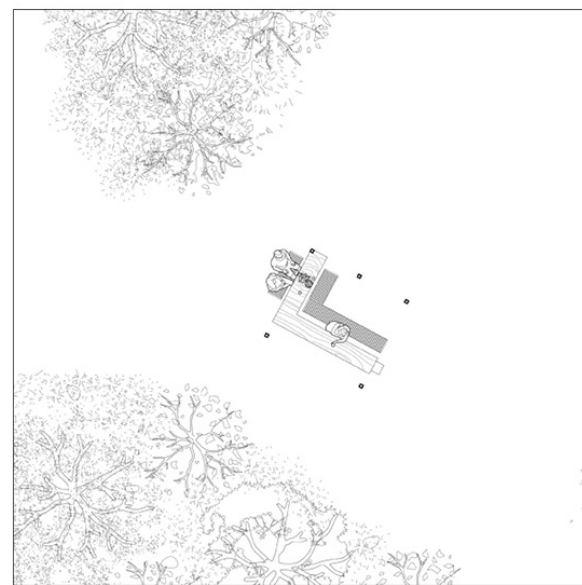
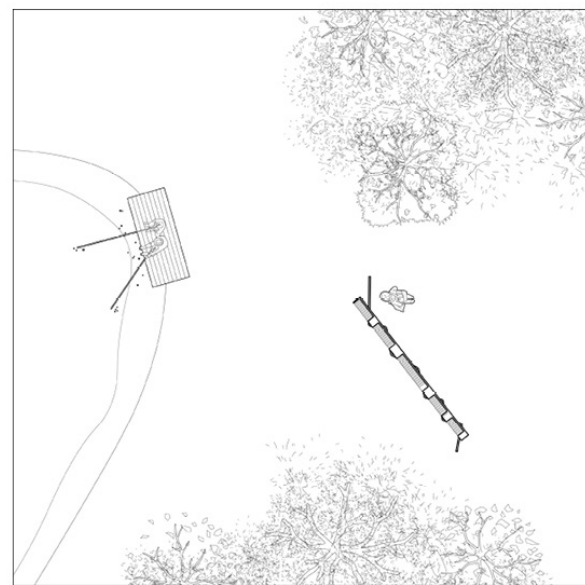
LARGER QUANTITY
 OF THE SAME FRUIT



DISEASE IS EASILY CONTAINED
 WITH SPECIES DIVERSITY
 AND A HAPHAZARD LAYOUT



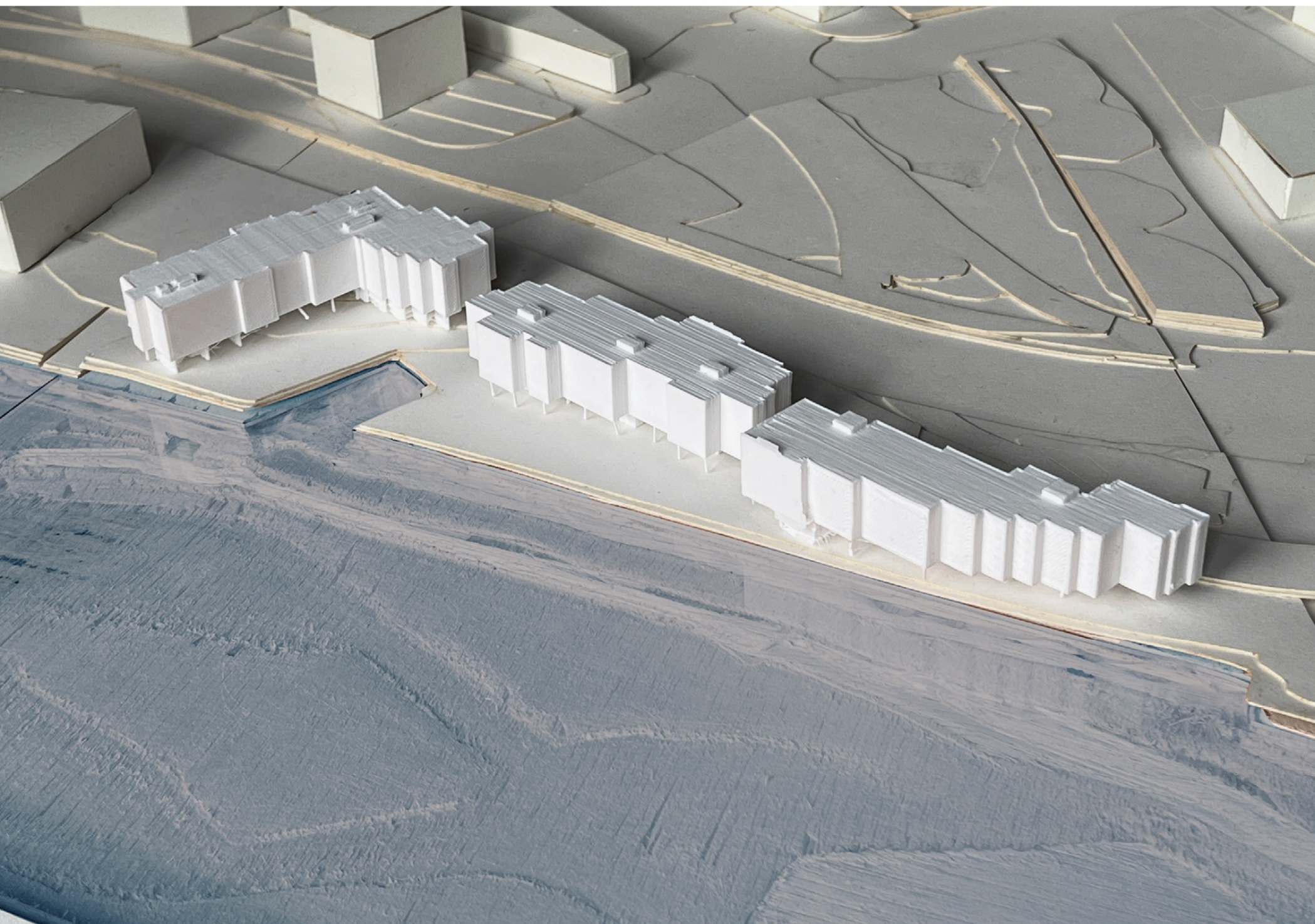
SMALLER QUANTITY
 OF DIVERSE FRUITS
 AND BETTER QUALITY



Towards Ecotourism

To preserve pollinator diversity on the site, different plant species must be planted alongside each other. This arrangement necessarily results in less efficient mechanical harvesting. To compensate for this negative effect, the Community Supported Agriculture (CSA) model is introduced, focusing on community building and sustainability education. Signage, picnic tables, and market stands are brought in for this purpose.





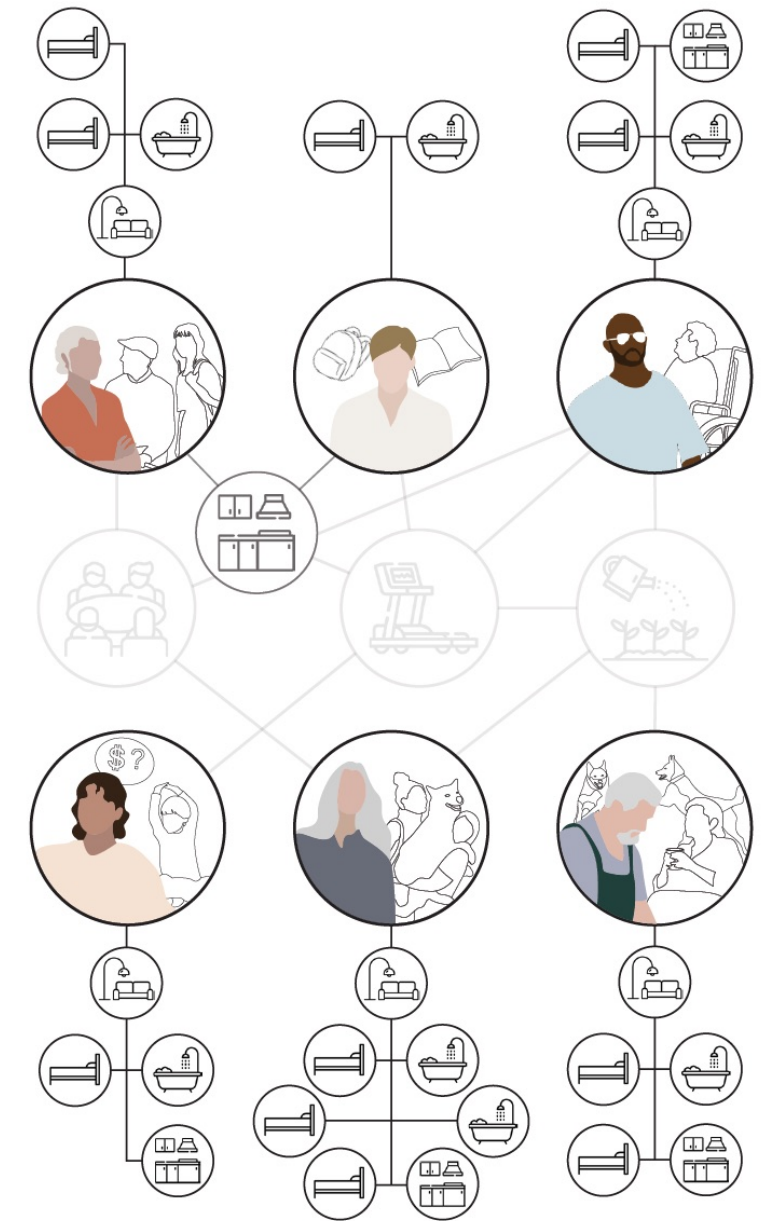
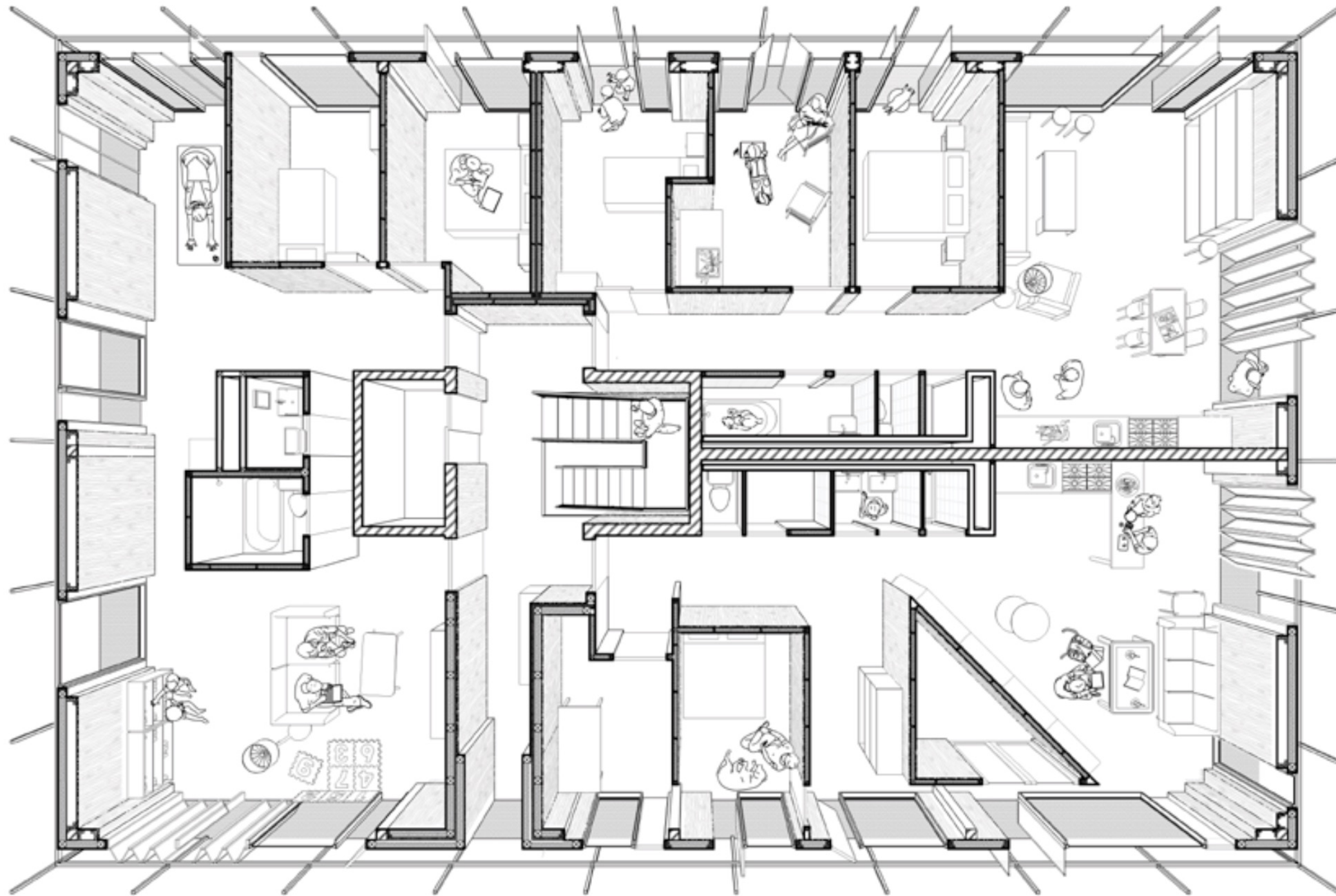
CO-CORRIDOR

FALL 2022 CORE III
Critic: Christopher Leong
Collaborator: Joyce Wang

Can corridors be a lively space to stay rather than a dark transit non-place to simply pass by? In this project, we propose to reimagine the corridors as a new form of communal space where activities happen at your front door, reminiscent of the old Bronx street life.

With the Harlem River running along its western boundary and a heavily trafficked road to the east, the site is somewhat isolated, our proposal aims to attract people from around the neighborhood to infuse the site with vibrancy.

By leveraging the picturesque Harlem River as a valuable asset, we optimize its potential by ensuring easy access to the waterfront. To accomplish this, we utilize a concrete cantilever structure that occupies minimal ground floor space, thus preserving the site's permeability at ground level.



User Need Diagram

Precedent Study


Collaborators: Julia Vais, Maria Berger

The R50 Baugruppen is a co-housing project in Berlin, Germany, featuring a radically participatory, collectively funded development model. As a precedent, we drew a plan perspective and made a physical model to deepen our understanding of its spatial organization.




With a user-centric approach, this project begins with six interviews aimed at gathering insights into the needs of individuals across diverse household types and life stages. The diagram shows the findings of these interviews, with the darker bubbles indicating each user's preferred unit type, and the lighter bubbles shared facilities they desire.




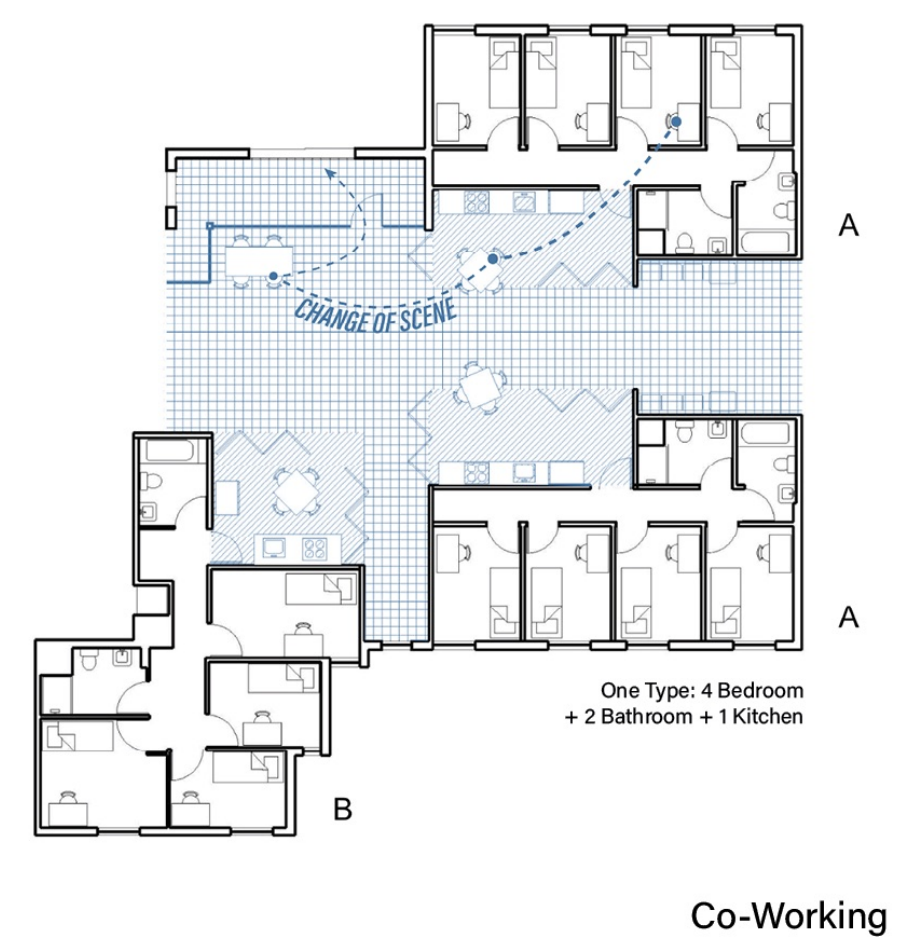
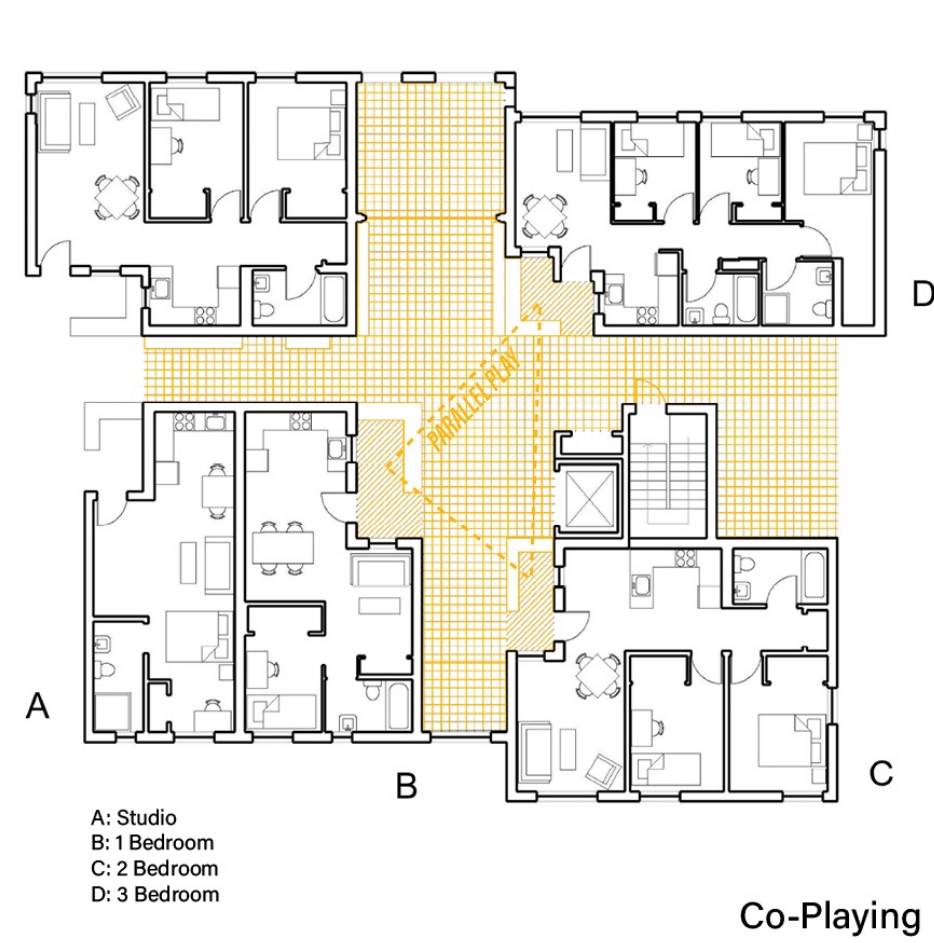
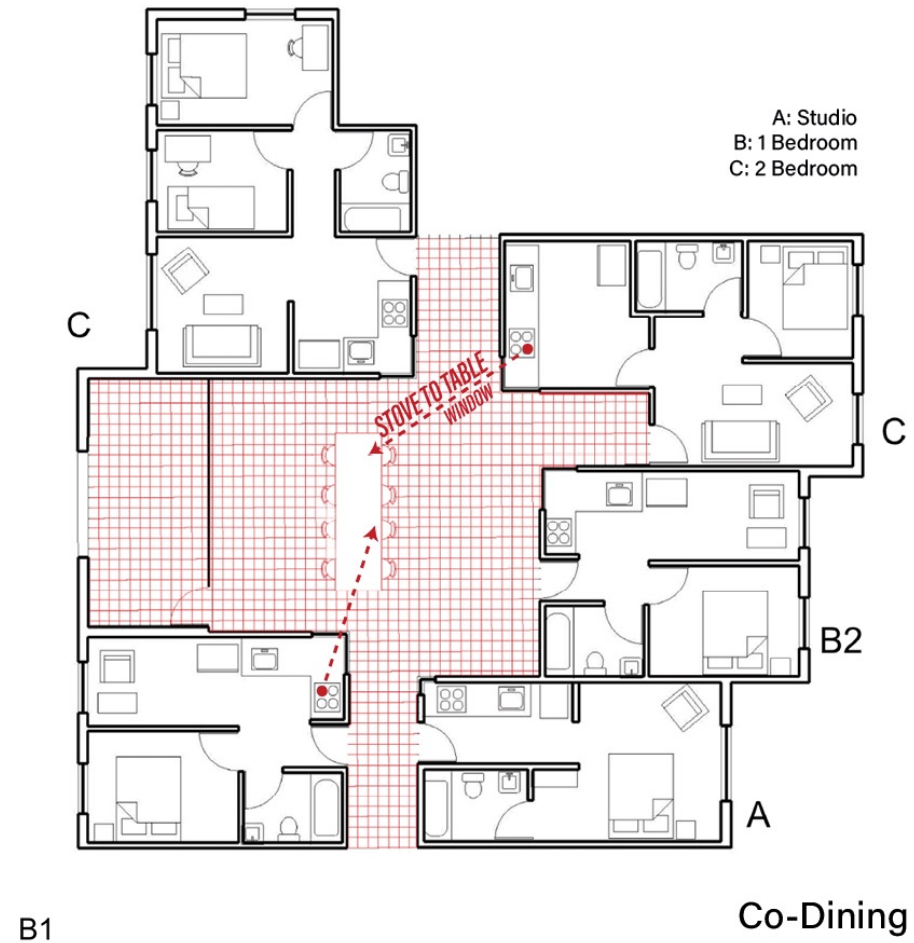
 I have a large group of friends whom I regularly play boardgames and have dinner with. A communal space with big tables for parties would be nice.

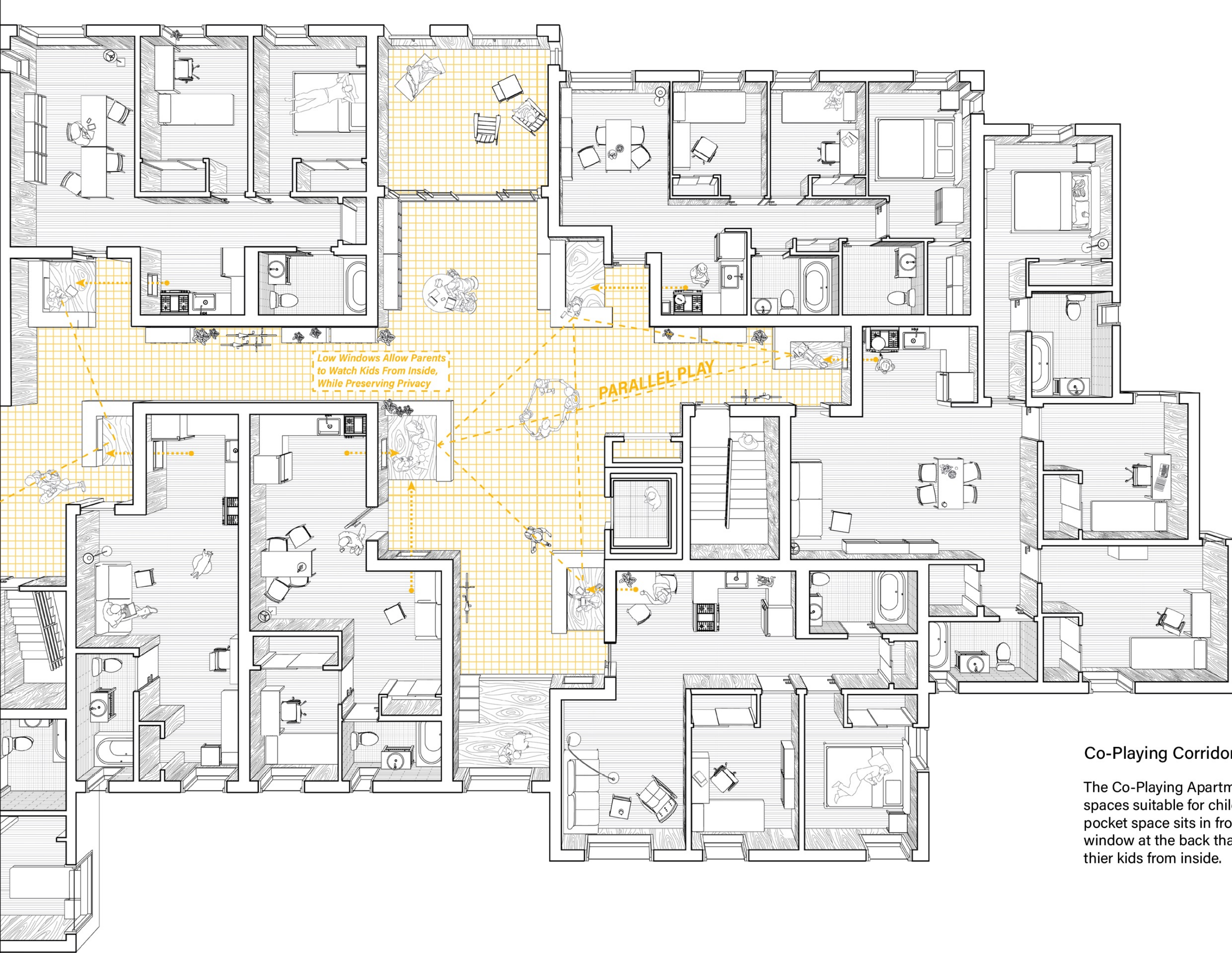


 Extended family visits me on the weekends. A safe space for kids to run around would be good.



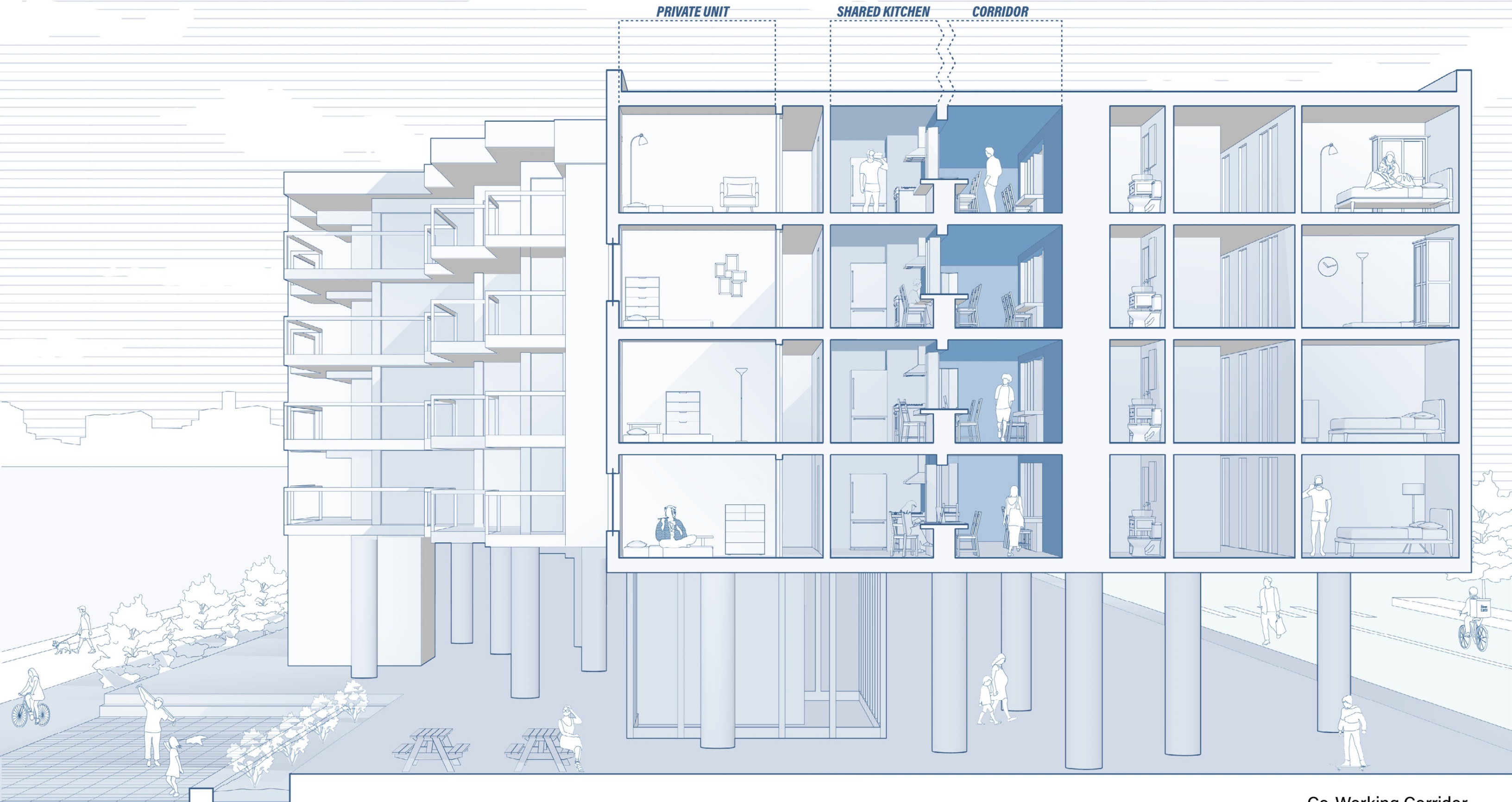
 I go to the library or coffee shops when I need a good atmosphere for working. would be nice if there was this type of space in my building.





Co-Playing Corridor

The Co-Playing Apartments share spacious corridor spaces suitable for children running around. A pocket space sits in front of each unit, with a low window at the back that allows parents to watch their kids from inside.



PRIVATE UNIT

SHARED KITCHEN

CORRIDOR

Co-Working Corridor

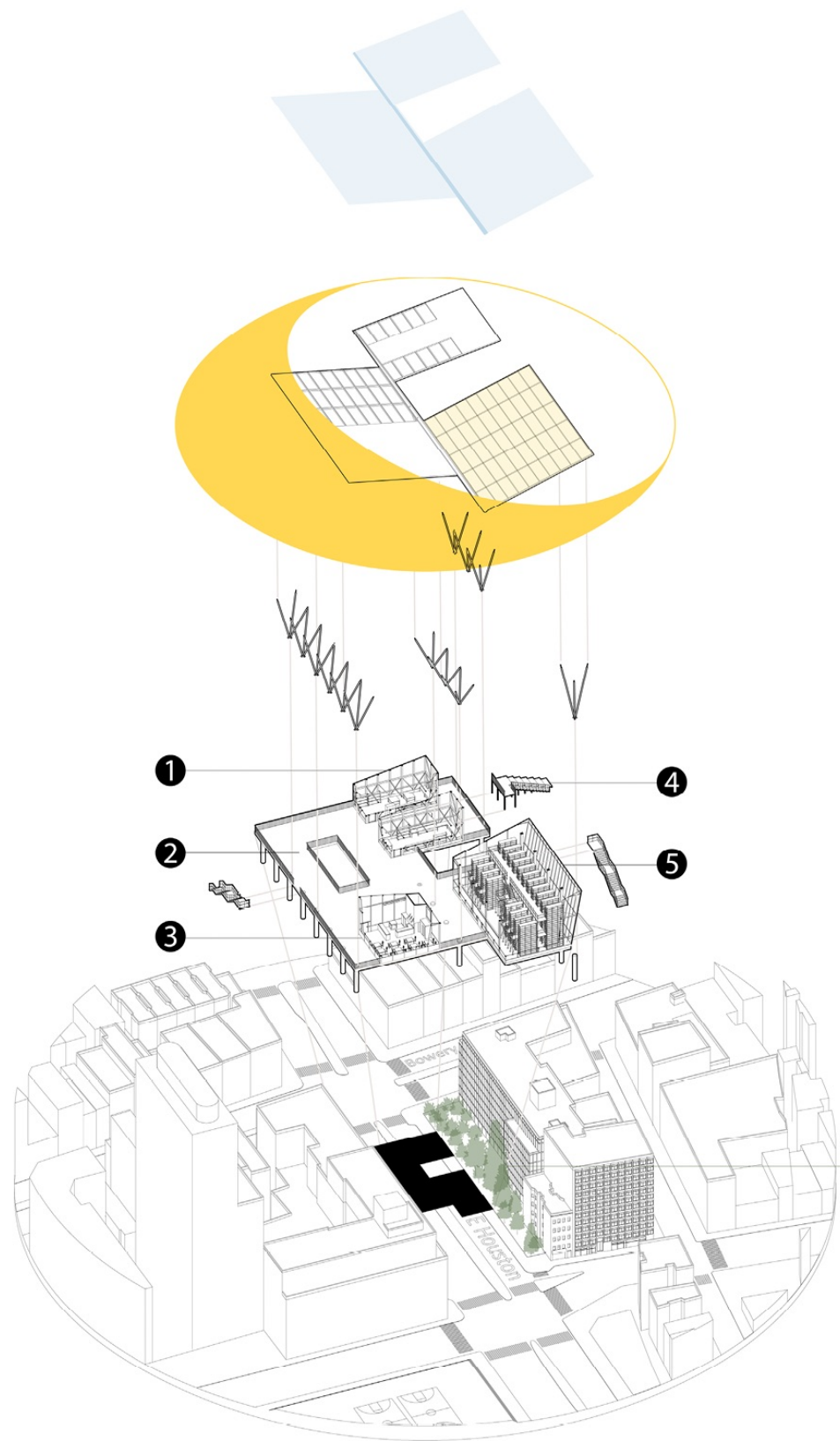


Garden Commons

FALL 2020 CORE I
Critic: Amina Blacksher

This project begins with the observation of the seemingly paradoxical fact that the community garden is fenced. Closed on the day I first attempted to visit, the garden appeared exclusive to me. Standing outside, I looked at the plants that grew outside the fence and noticed their branches were cut to allow pedestrians to pass under. The boundary negotiation at play intrigued me and made me question: how much more can the garden grow?

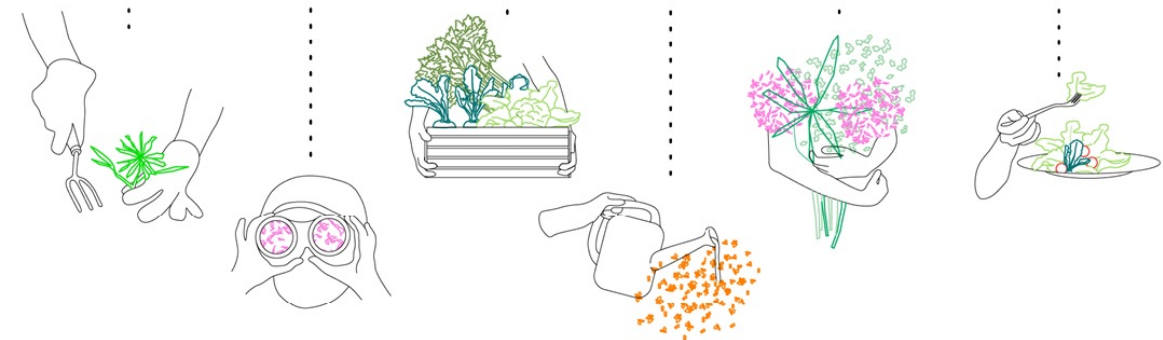
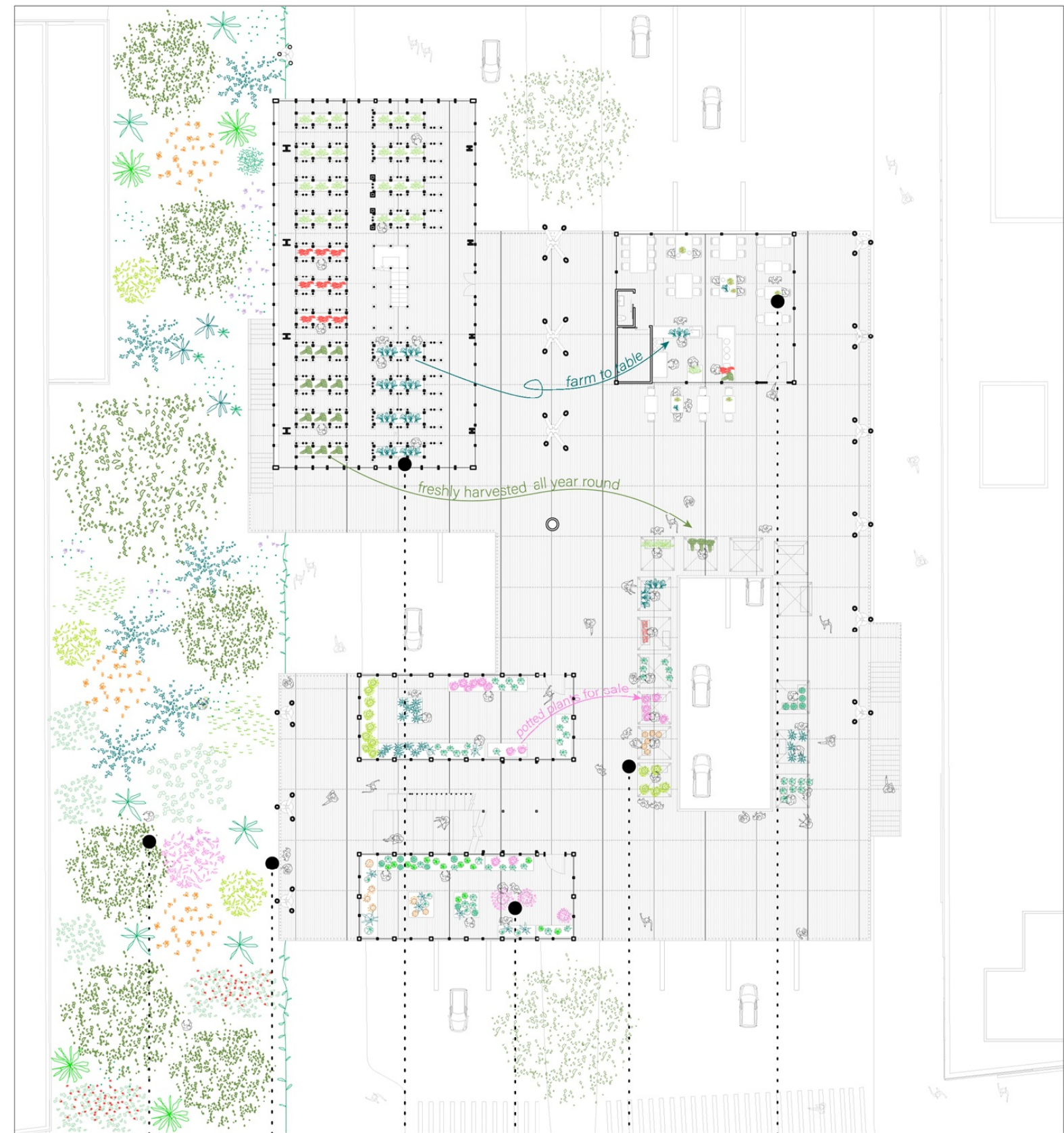
Just as the growth of plants is permitted as long as it doesn't obstruct the sidewalk, the garden should be able to expand as long as it doesn't impede traffic. The goal of this project is to make the community garden more than a presence behind fences by providing opportunities for the public to engage even during off hours.



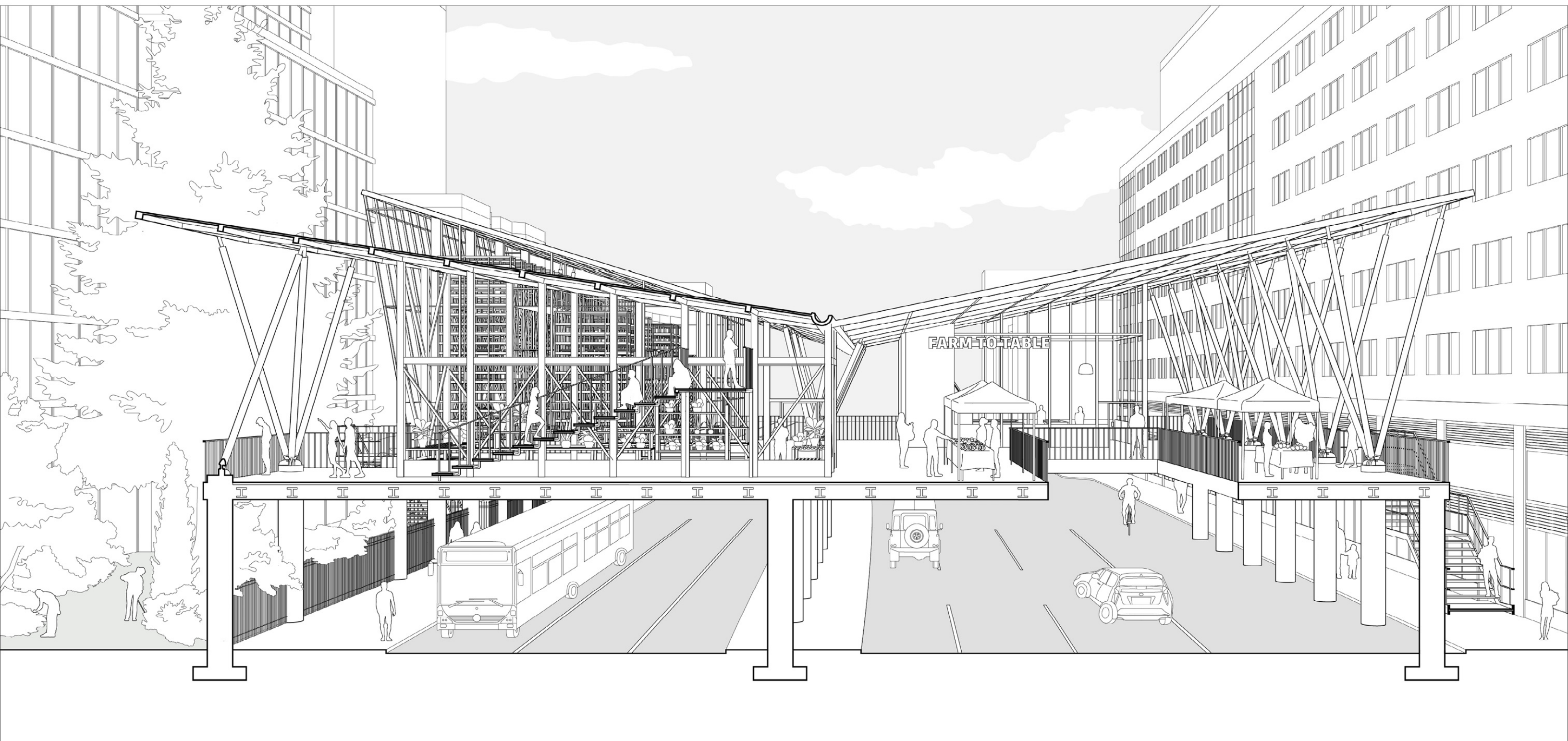
RAINWATER HARVESTING ROOF WITH A GUTTER IN THE MIDDLE THAT CHANNELS DOWN THE WATER FOR STORAGE

SOLAR PANELS ORIENTED TO CAPTURE SOLAR ENERGY

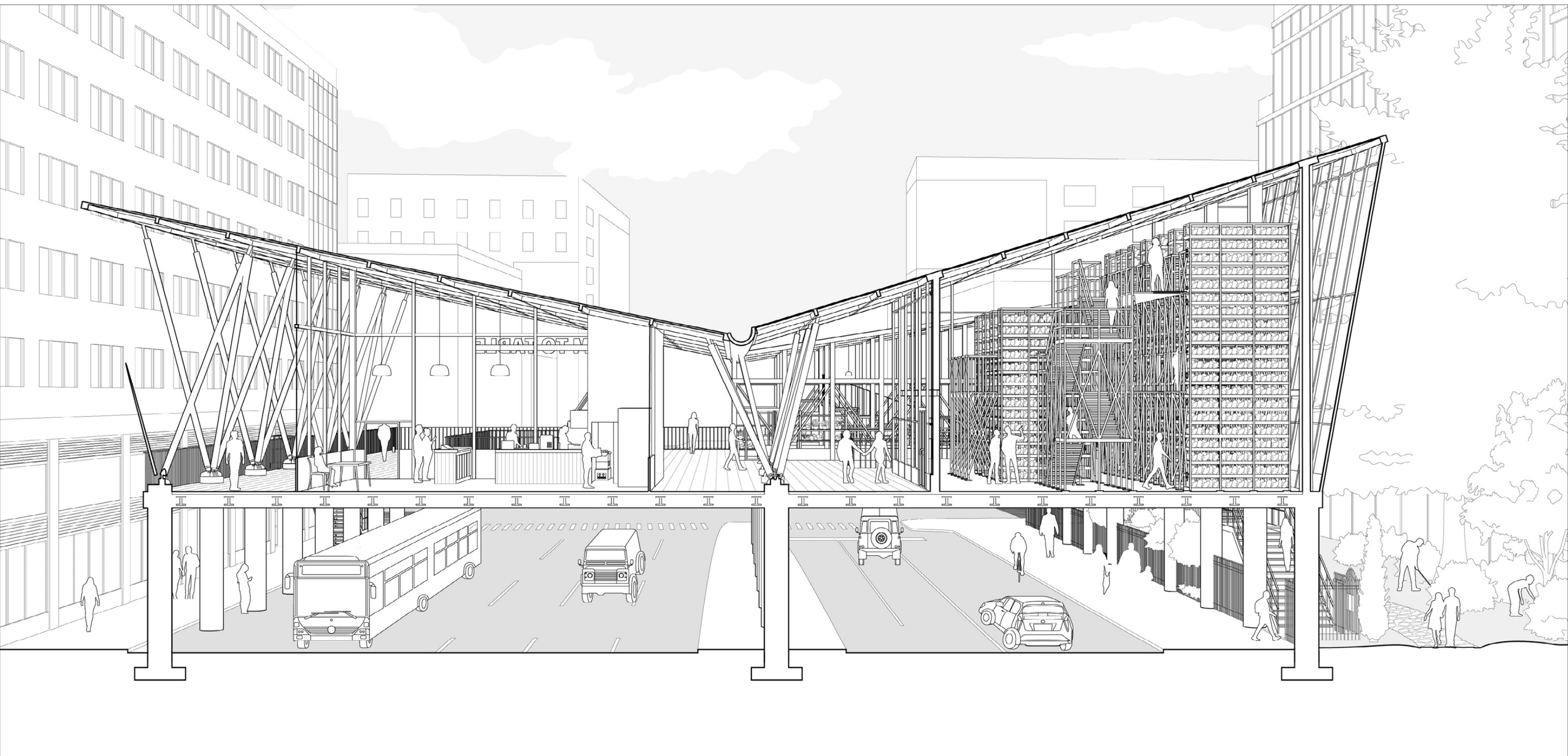
- 1 GREENHOUSE
- 2 MARKETPLACE
- 3 FARM TO TABLE KITCHEN
- 4 VIEWING PLATFORM
- 5 VERTICAL FARM



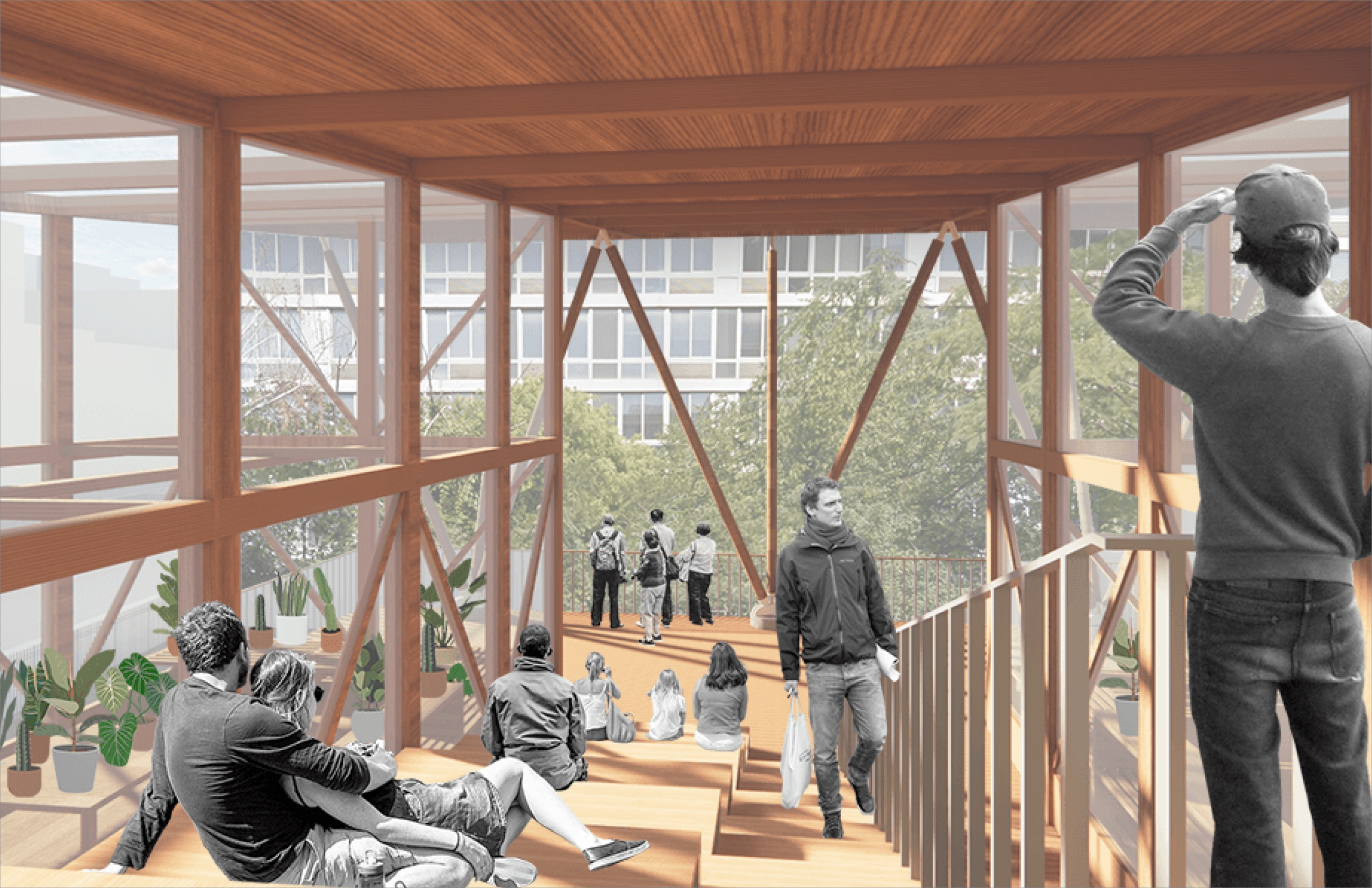
The Variety of Ways of Engagement with the Community Garden



A multifunctional facility spanning the road, this project comprises a vertical farm, greenhouse, farm-to-table kitchen, garden viewing platform, and weekend farmers' market square. People thus get to enjoy the garden's beauty from above, regardless of the garden's opening hours. Most importantly, the community garden annex creates a variety of ways of interaction between the garden members and the neighborhood, expanding its engagement with the community.





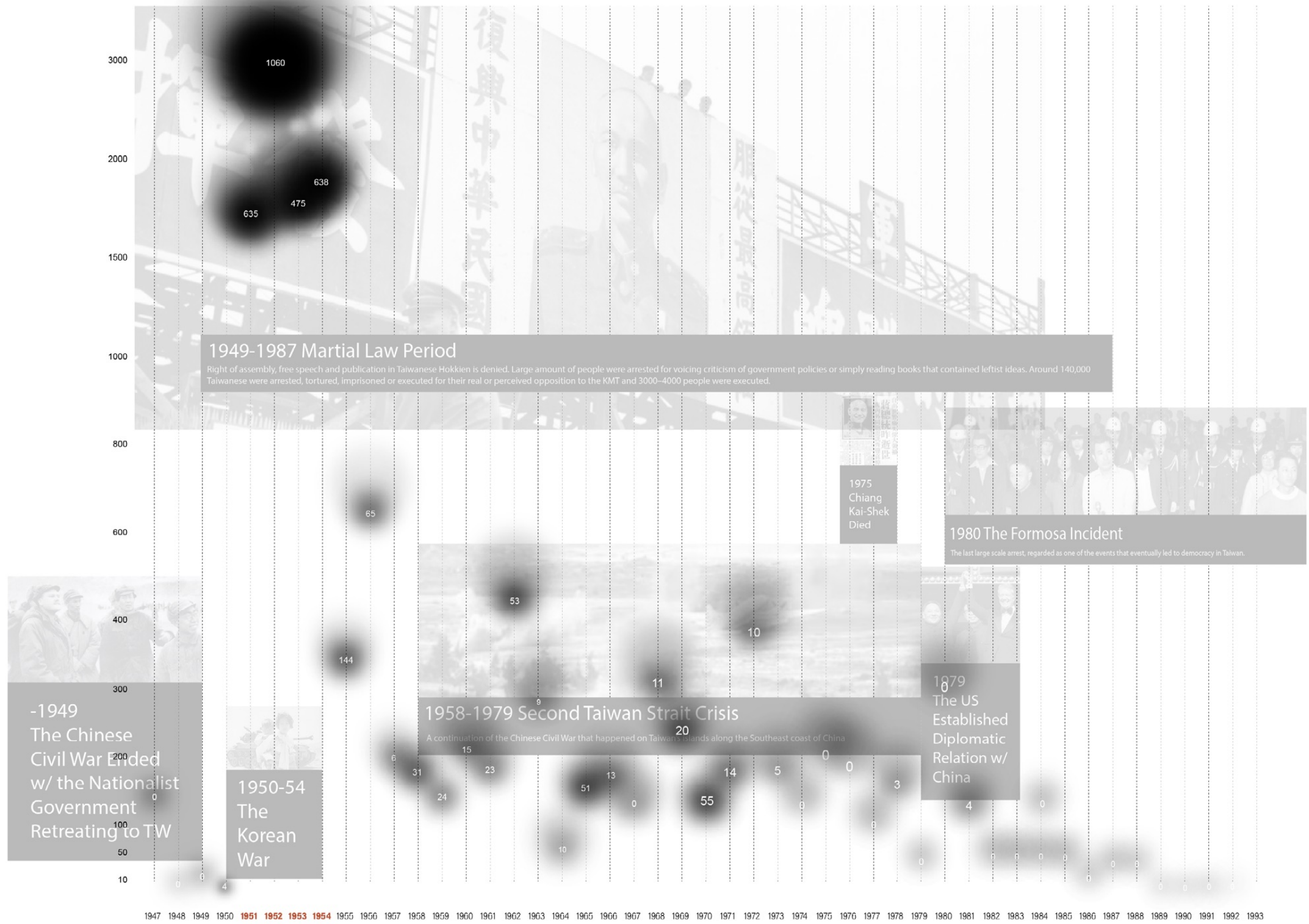




Keeping Memories Alive

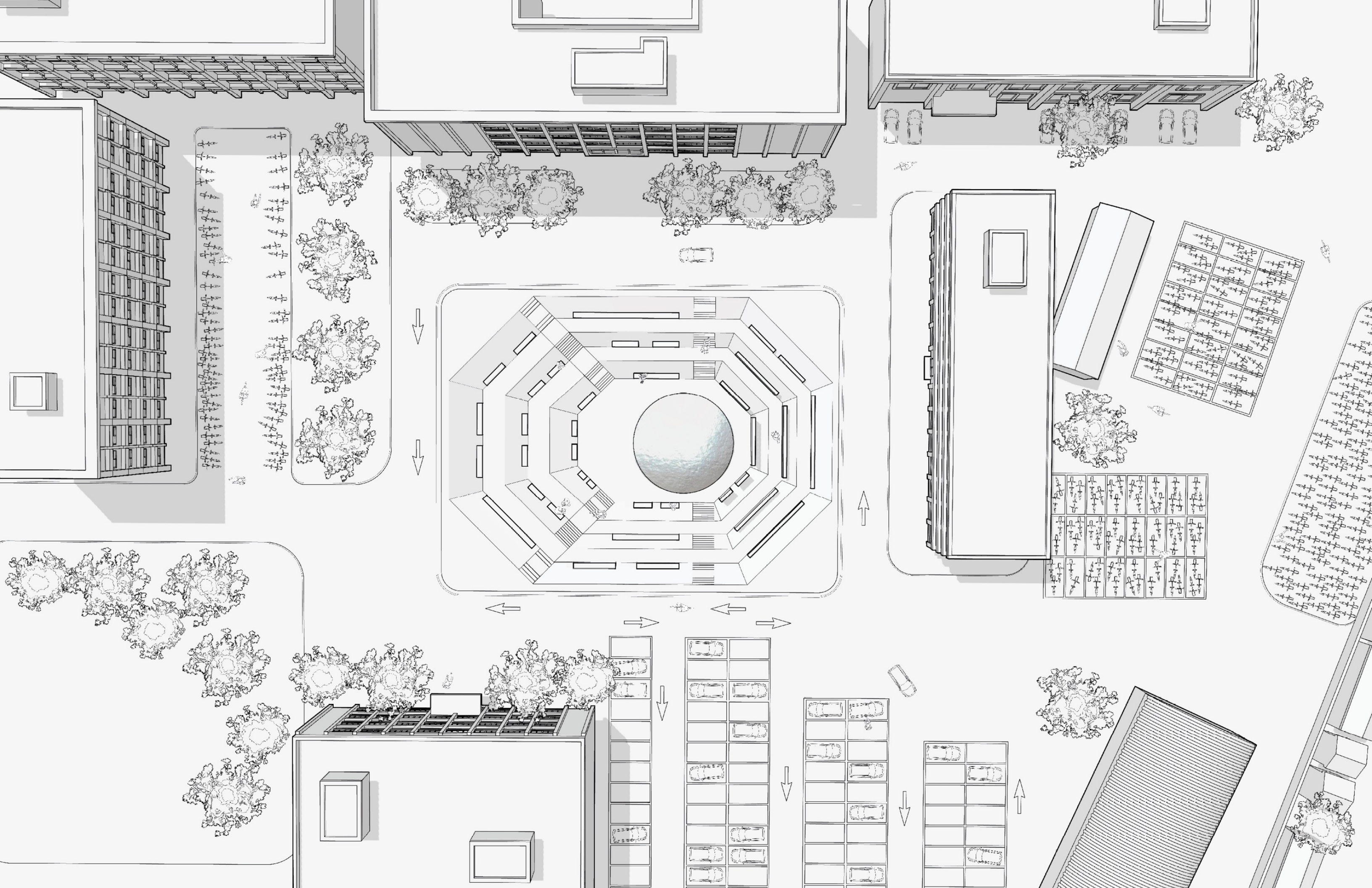
SPRING 2024 ADV VI
Critic: Paulo Tavares

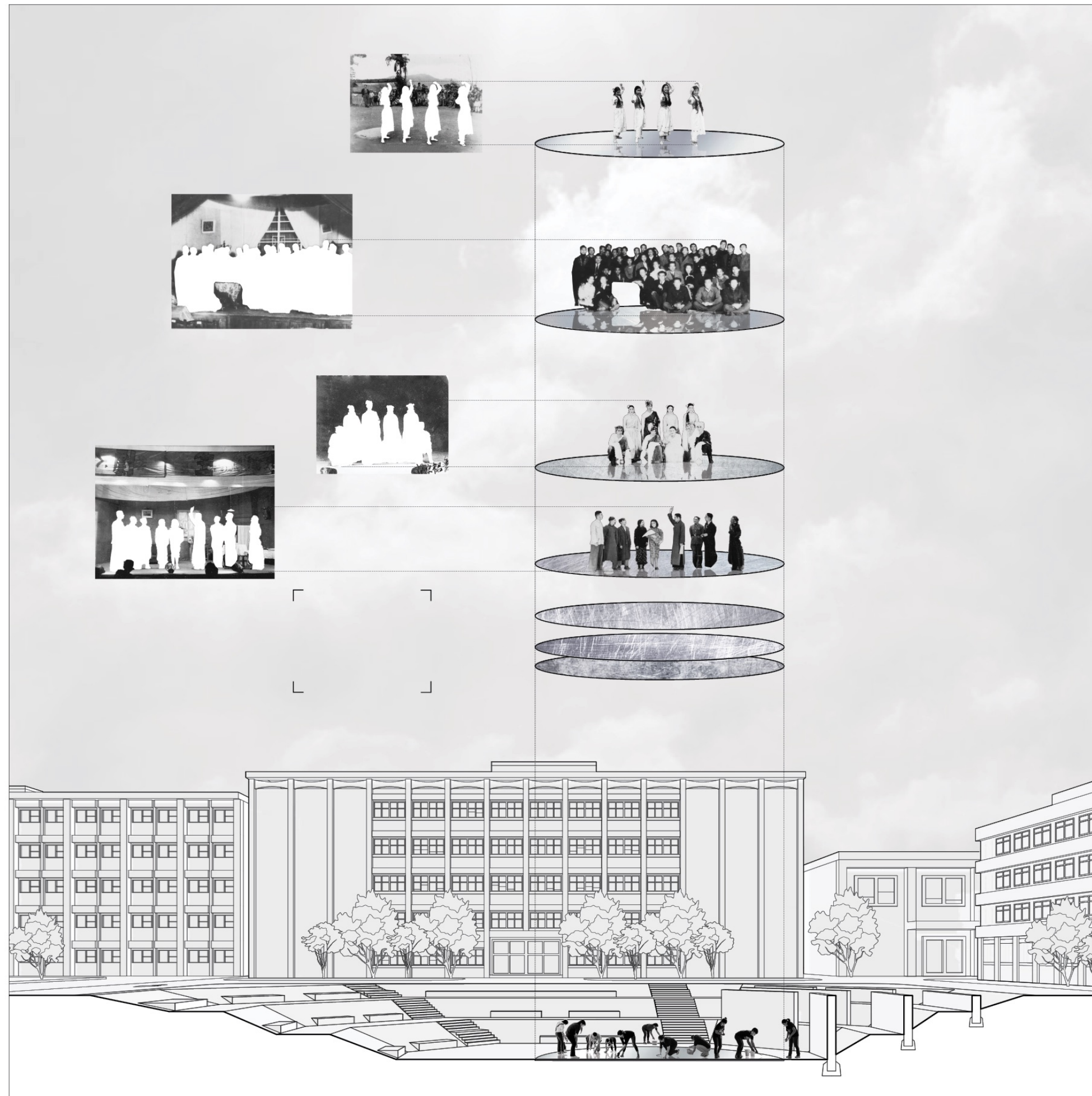
This project seeks to address the turbulent history of the former National Defense Medical School in Taipei, now an annex of National Taiwan University. During the Cold War era, particularly in the 1950s, the site served as a locus of oppression where the bodies of executed political prisoners were used for anatomy classes. With the goal of acknowledging and commemorating this dark past, the proposal includes an amphitheater inspired by the Chinese symbol Bagua, reminiscent of a Bagua garden that once served as a landmark at the school. This venue will honor the memory of students persecuted for their involvement in cultural activities, with a stage made of mirror-polished stainless steel that collects scratches from use. These marks are annually polished away by students in a ceremonial act of remembrance, ensuring that the history and its lessons remain a living part of the community.



Numbers of People Arrested, Imprisoned and Prosecuted

This project delves into Taiwan's Cold War history, focusing on the 1950s when President Chiang Kei Shek, in response to the Communist threat from mainland China, restricted freedoms and ordered the executions of nearly 3,000 political prisoners to contain communism.





Reparation

In memory of the students who were arrested for their extracurricular activities, including drama, dance, and singing, I propose an amphitheater based on the Chinese symbol to recall the history of the medical school and to restore what was deprived in the past, bringing back the spirits that were erased.



Participatory Monument

With the stage surface made of mirror-polished stainless steel, scratches accumulate overtime with activities happening. Annually students gather to polish the stage surface as a commemoration ceremony. Thereby the activities that leave scratches and the annual polishing of the surface become an integral part of the participatory memorial, keeping the dialogue going and the memories alive.