

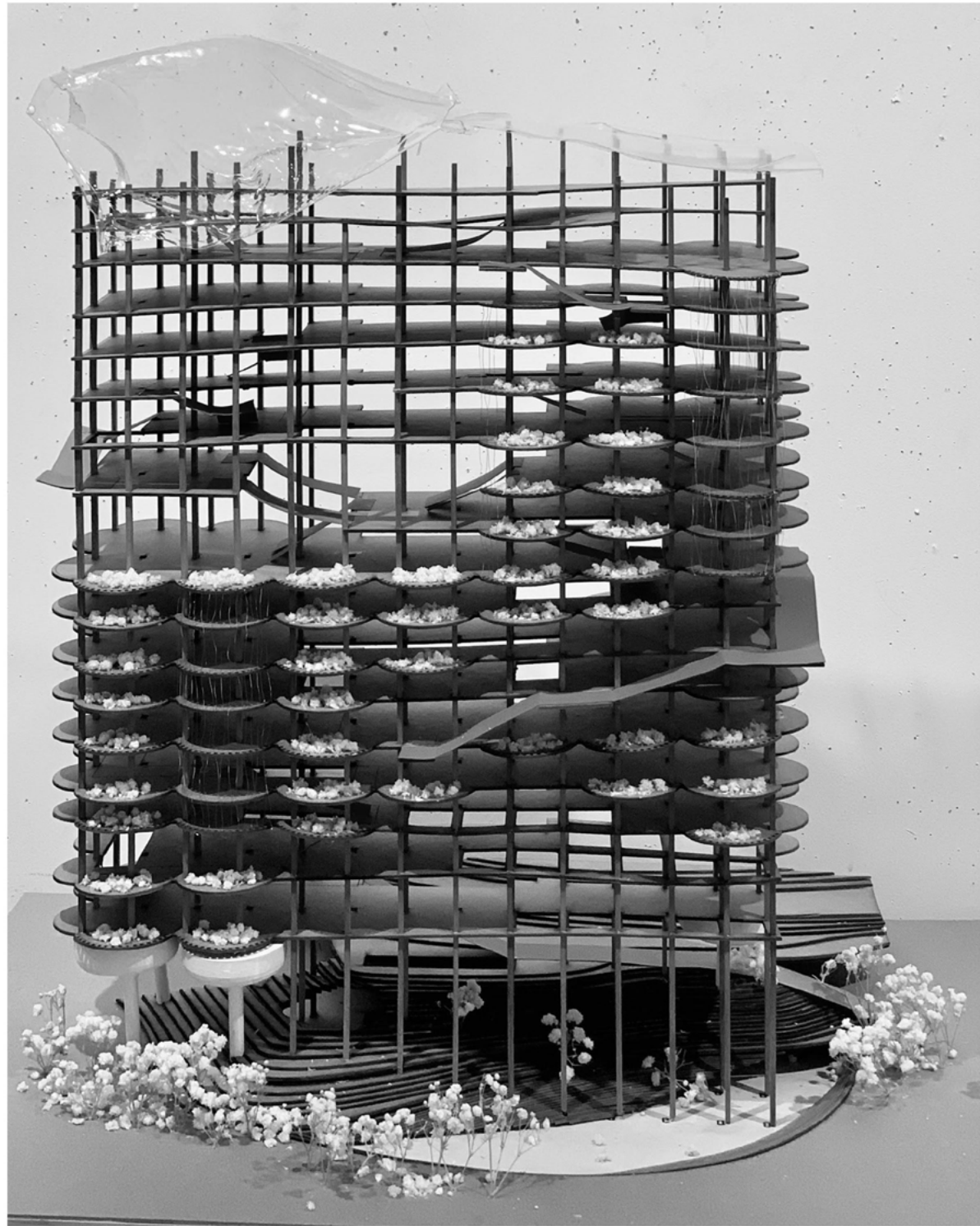
# HARSHINI ASHOK

*MS. Advanced Architectural Design  
GSAPP Portfolio '24*



# CONTENTS

1	FOOD FOR THOUGHT <i>Advanced studio VI, Spring 2024</i>	03
2	PARK KINGSBRIDGE <i>Advanced Studio V, Fall 2023</i>	09
3	THE CITY OF MISFITS <i>Summer Studio 2023</i>	14
4	MAKE <i>Visual Representation Elective, Fall 2023</i>	18
5	HOME IS WHERE THE TOXINS ARE <i>Building Tech Elective, Fall 2023</i>	23
6	THE OUTSIDE IN PROJECT <i>Building Tech Elective, Spring 2024</i>	29
7	EMERGING OPTIMISM <i>Building Tech Elective, Spring 2024</i>	35
8	rAADio <i>A student led podcast, GSAPP 2024</i>	39



# 01 FOOD FOR THOUGHT

*Empowering Rio's Plate and People*

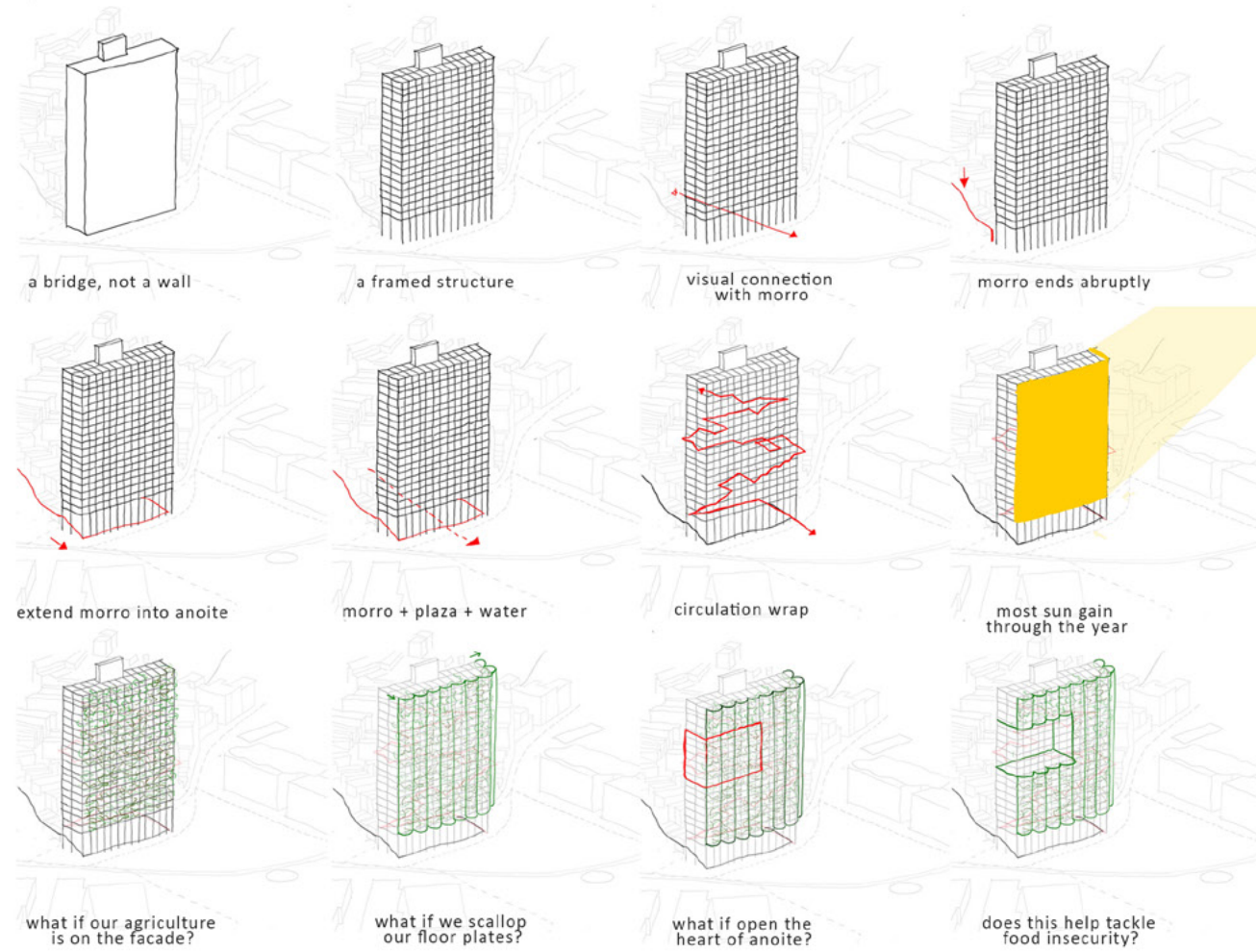
Site - A Noite, Rio de Janeiro, Brazil  
Professor - Galia Solomonoff  
Group Partners - Stuti Murarka, Maryam Hanif

LAYERED URBANISM

Edificio A Noite, the first skyscraper in reinforced concrete in all Latin America. Located in the center of Rio, lies unused and signals decay. The building is too big to be ignored and not loved enough to be restored. What do we do then? Demolish it and build a new one? Demolish it partially? Restore it fully? Let it be an art site? Let it become a ruin on its own?

# ADAPTIVE REUSE / A NOITE

Tackling Rio's food insecurity, by merging a food bank with urban farming. This "food silos" fosters community self reliance. It acts as a bridge, connecting the Morro, with the waterfront and plaza. Public walkways weave through vertical farms, community spaces and public forums.- fostering a place to nourish, learn and collaborate



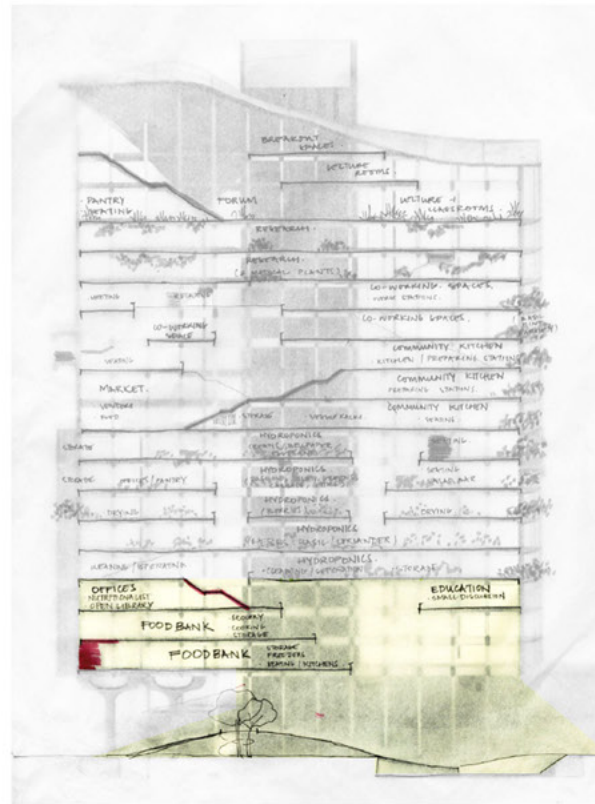
How can we weave this into the fabric of Rio and respect A Noite's rich history?

What if we not only grew agriculture, but it worked as a food bank?

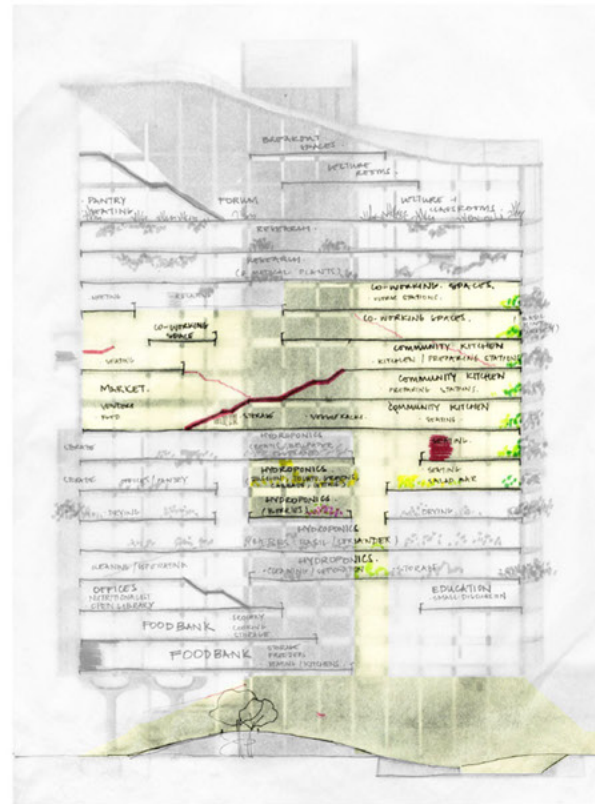


# A JOURNEY THROUGH A NOITE

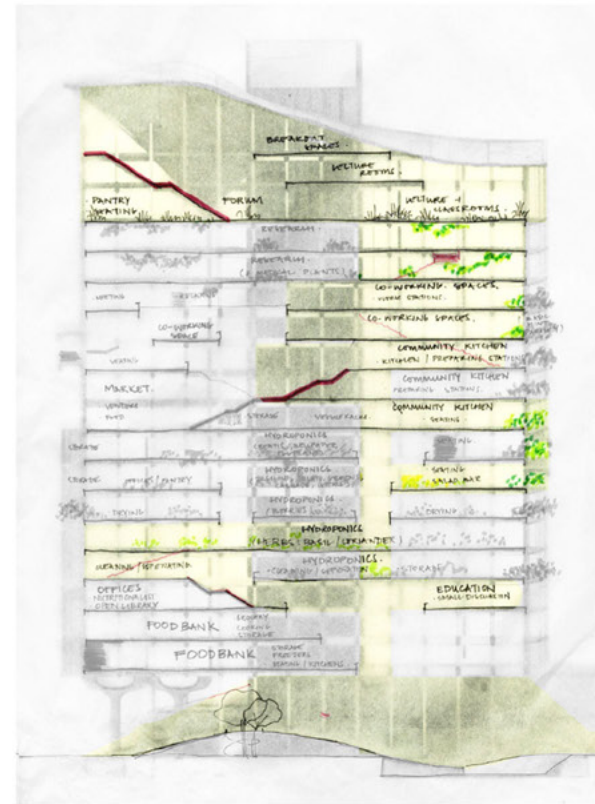
*With a place to nourish, learn and collaborate*



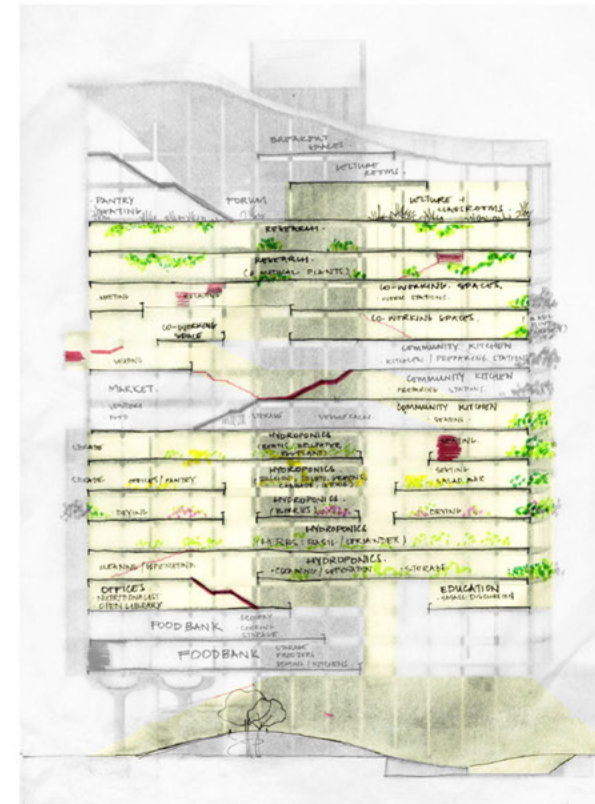
Food Bank users



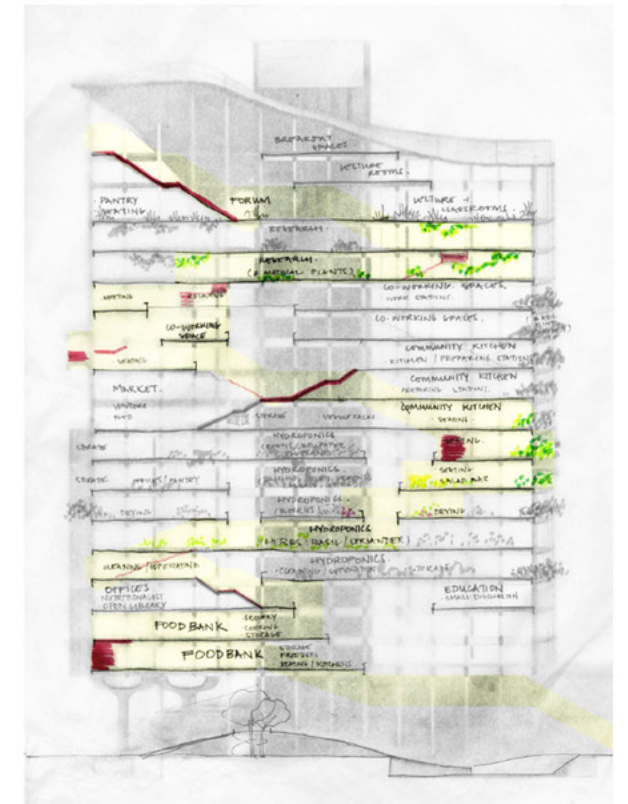
Recreational



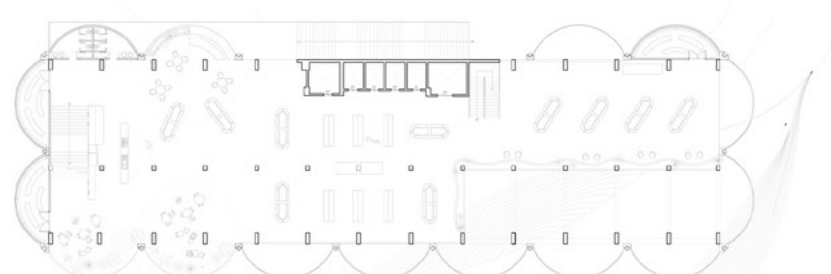
Forums and Discussions



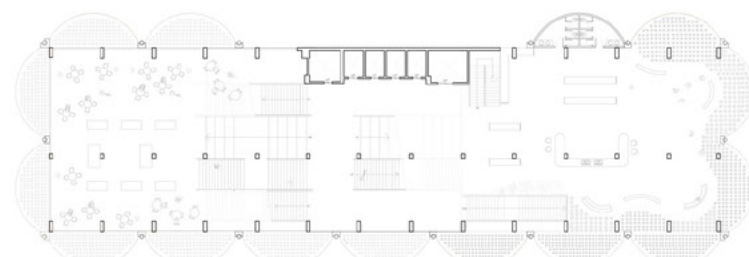
Employees



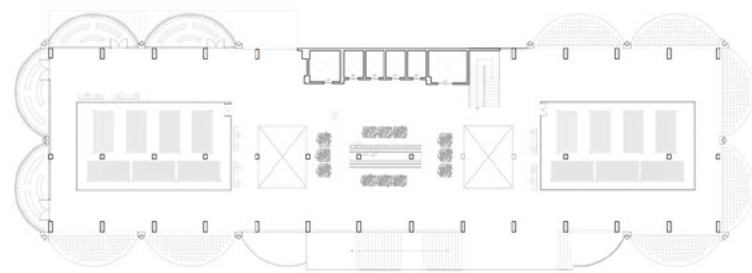
A Public Walkway



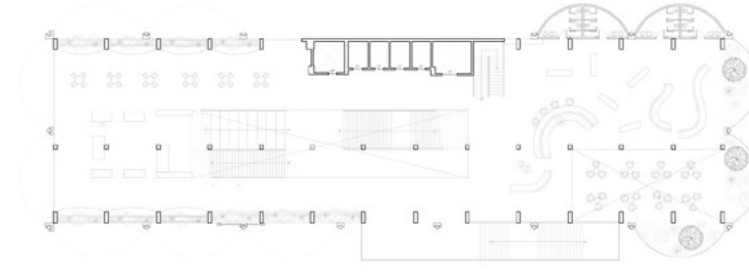
Level 1 - Food Bank



Level 10 - Research



Level 6 - Community Kitchen



Level 16 - Public Forum

Food insecurity in Rio is at an all time high. The people of the favelas do not have access to a nutritional meal. This causes a divide among the people.

A Noite becomes a model for driving change.



Community Kitchen

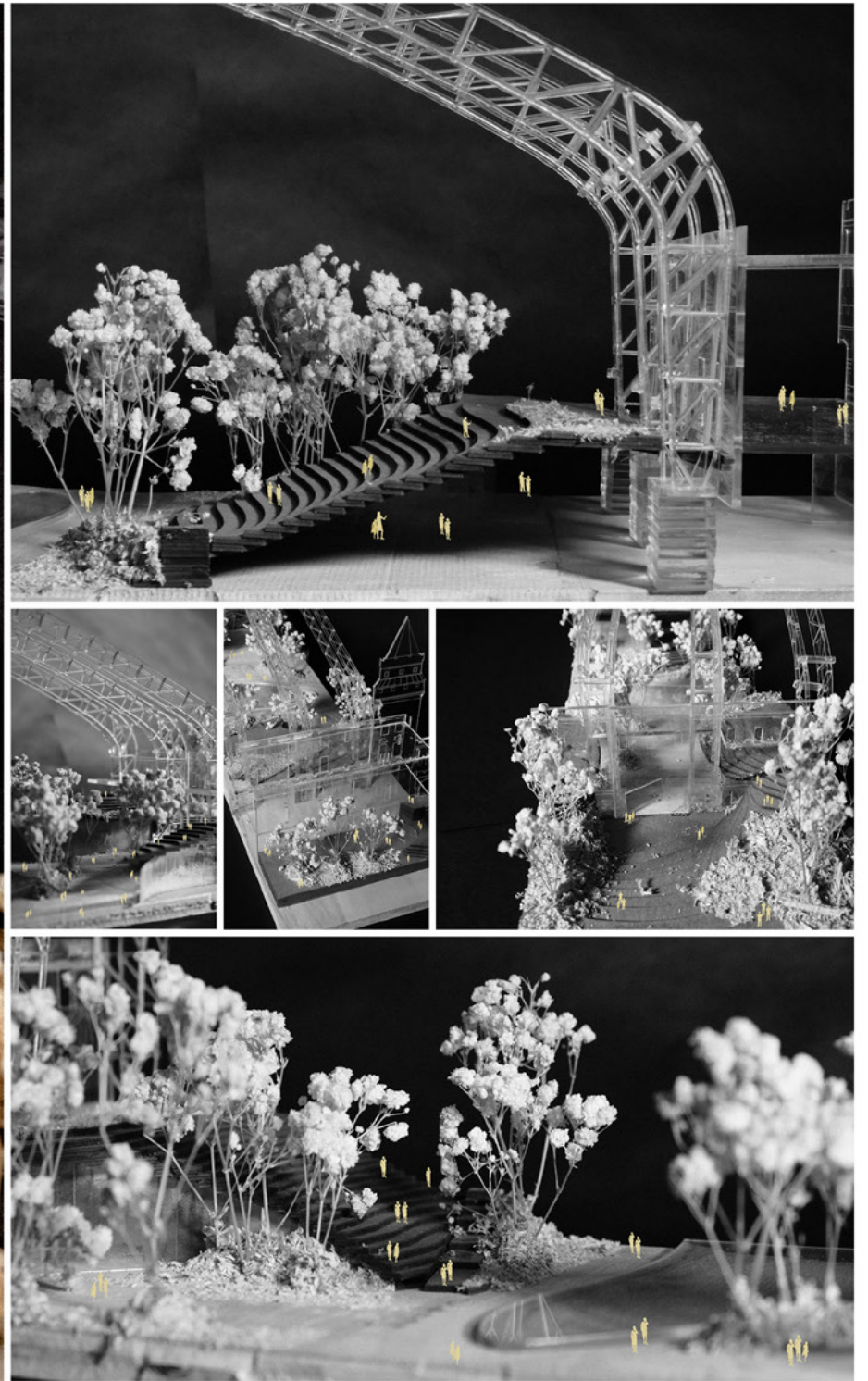
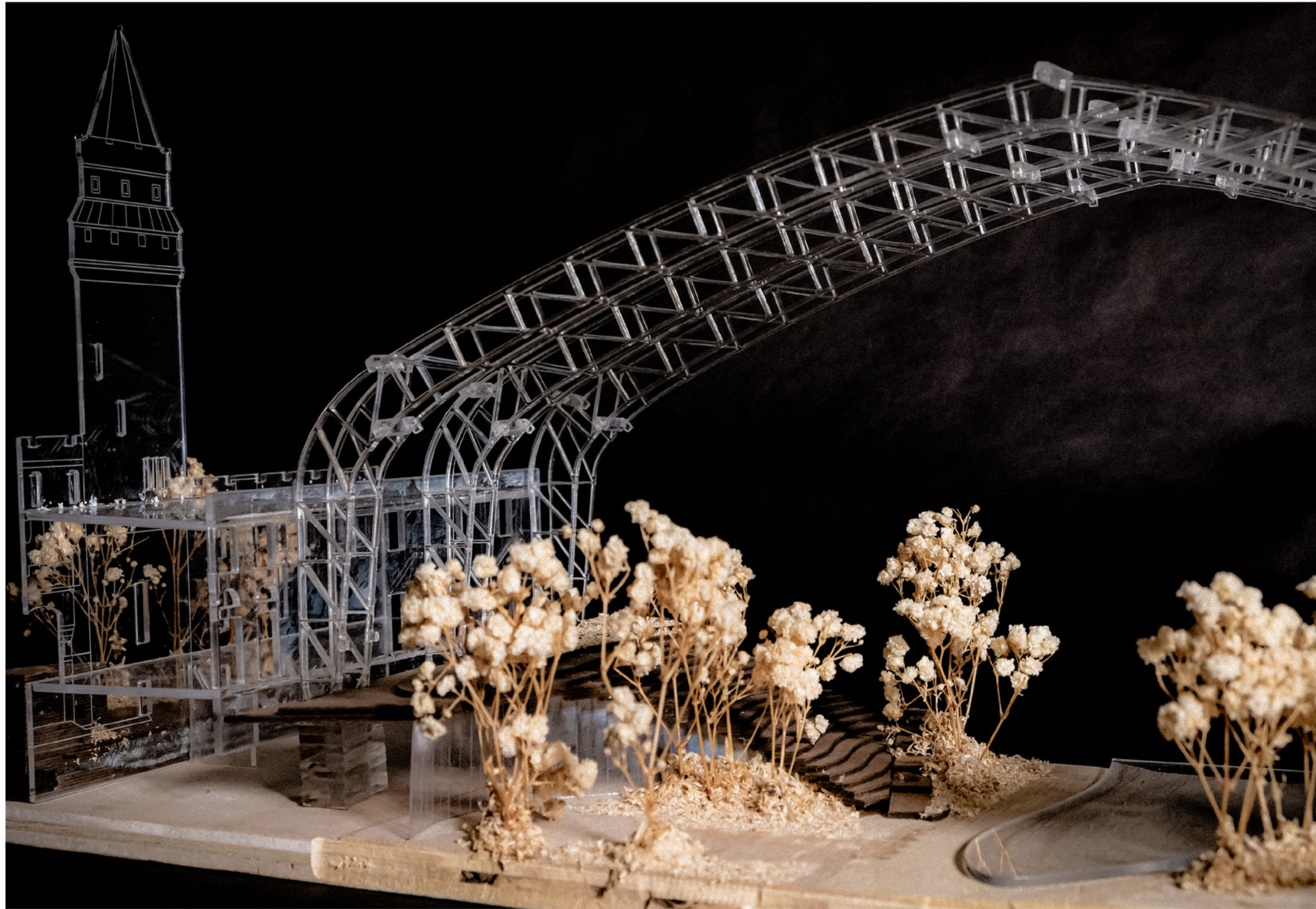


VERTICAL CIRCULATION









## 02 PARK KINGSBRIDGE

*Social Infrastructure for the Kingsbridge Armory*

Site - Kingsbridge Armory, Bronx  
Professor - Laurie Hawkinson  
Group Partner - Shao-Yu Lu

EXTREME SCALE

What if there was a park in the Armory that could weave the gap between parts of the neighborhood, enhance the health of the community, support local businesses, and also preserve the feeling of bigness?

# ADAPTIVE REUSE / KINGSBRIDGE ARMORY

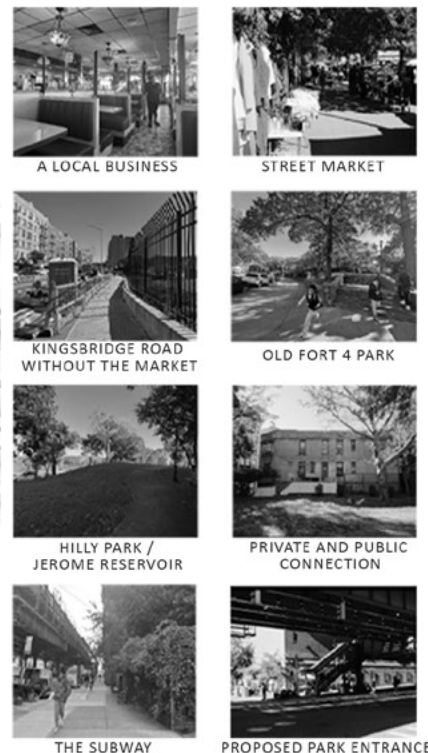
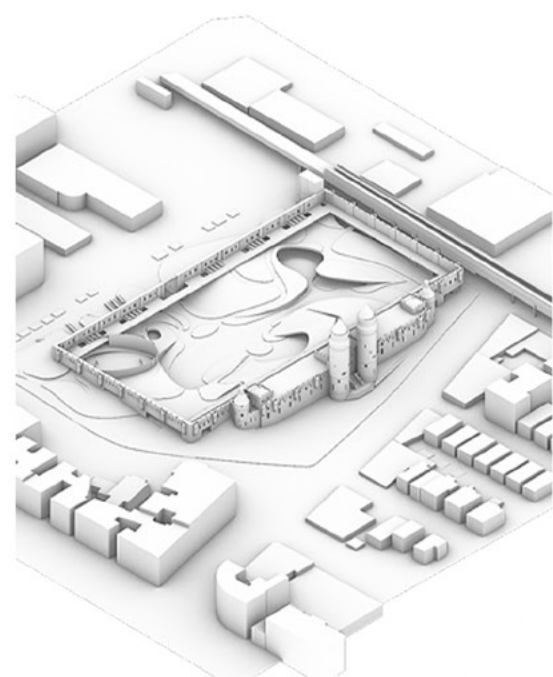
*How can we envision a new role for the Kingsbridge Armory as a social condenser for this hard-edged historic fortress? How can we create meaningful architecture - an 'open' and 'inviting community' space - in a structure designed to do the opposite - an impenetrable urban artifact? How can we make inviting community architecture, when the architectural language is already defined by a defensive-looking outer shell of Romanesque Revival?*

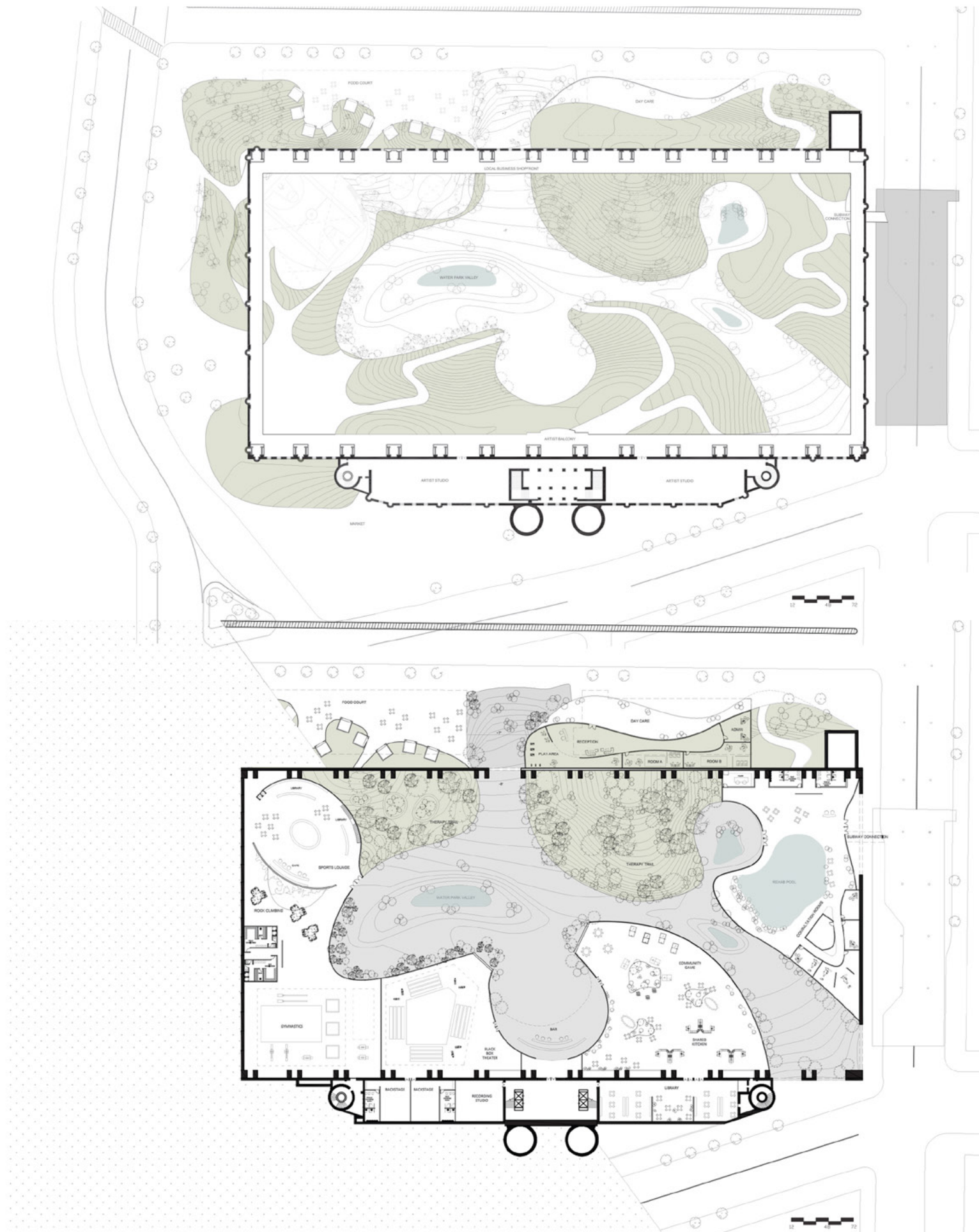
WHAT IF IT NOT ONLY IS A PARK BUT ALSO A TREE BANK?

Rainfall 45.1 inches yearly	x	Armory roof area	=	Total	=	1,433 trees
Snowfall 85.2 inches yearly		204,451 sqf		11,177,362 gallons of water		(15 inches in diameter)
260 pounds		1,433 trees		372,580 pounds of oxygen		2,866 people



WHAT CAN WE USE TO WEAVE THESE SURROUNDING ELEMENTS WITHIN THE ARMORY?





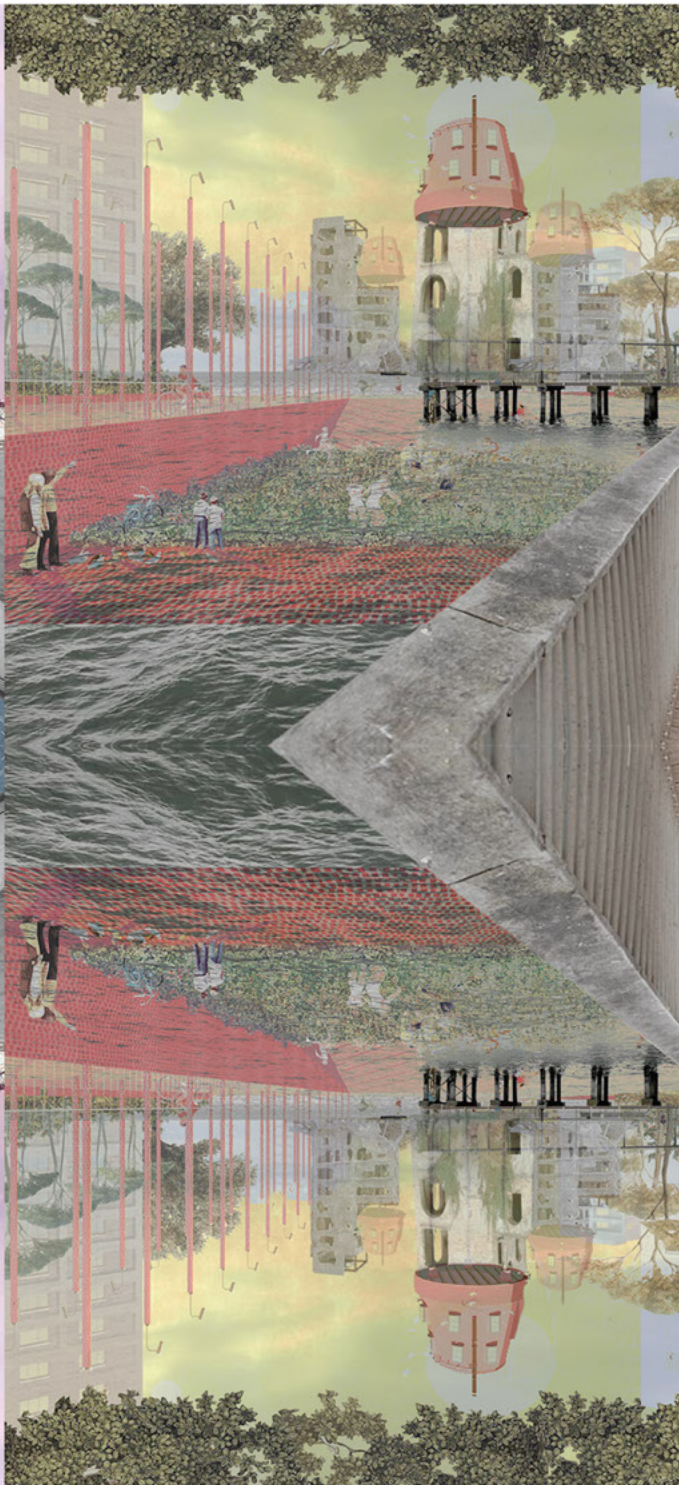
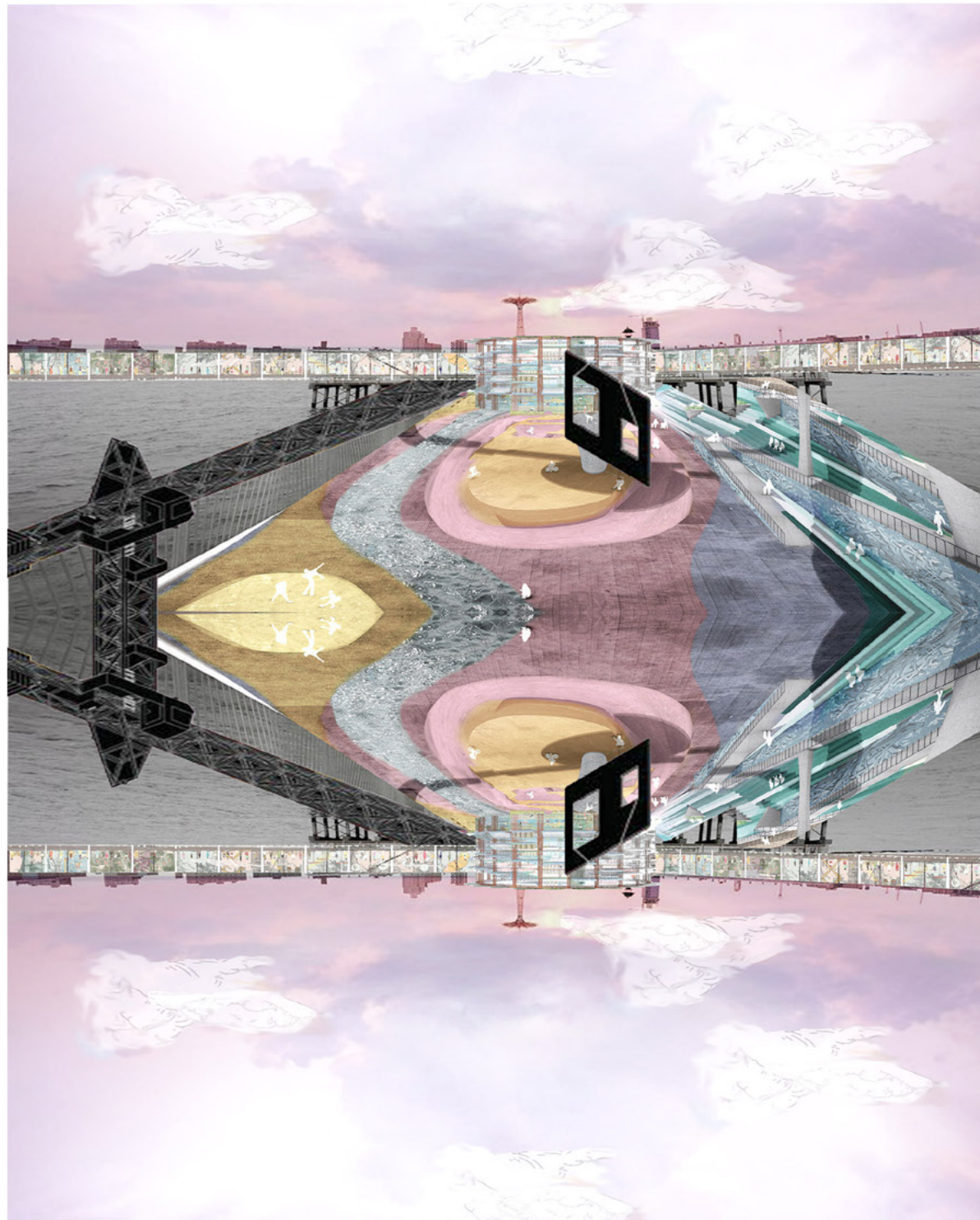
A vibrant oasis of landscaped hills connect to a water valley where kids can play, therapy gardens for elders tie in between informal amphitheatres for theatrical performances, and a subway station plugs into the adjacent street station.

Imagine taking your evening walk through a contained forest atmosphere, dining at your favorite local business while listening to upcoming artists, sitting atop the landscape volumes to finish a book with panoramic views, or grabbing a drink and watching the local basketball game with your friends.

Whether you are making your evening pit stop at the local market or just here to enjoy the feeling of a park indoors, transparent roof panels allow natural light to enter and create an outdoor ambiance within the armory. You can catch a breath of fresh air even when you're indoors, with a park inside the armory!







# 03 THE CITY OF MISFITS

*A Network of Care*

Site - Coney Island, New York City  
 Professor - David Moon  
 Group Partner - Preethi Ganesh

## SPECULATIVE ISLANDS OF THE CITY

The City of Misfits transforms Coney Island by caring for both its buildings and its people. It emphasizes community, social justice, and inclusion, not just fixing up structures. The goal is to create welcoming spaces that celebrate diversity and support everyone. Through events and collaboration, it makes Coney Island a vibrant hub where everyone feels valued.

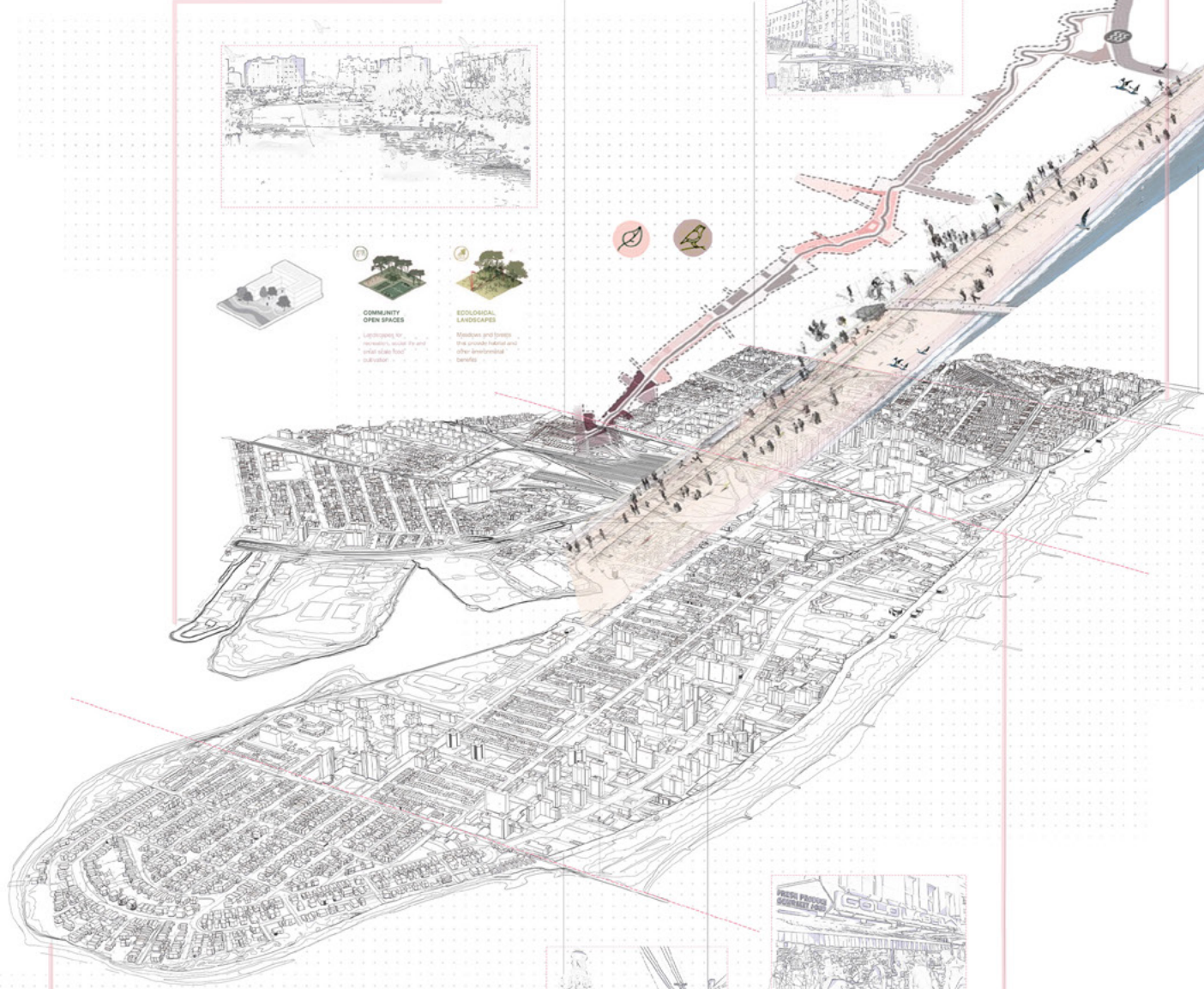
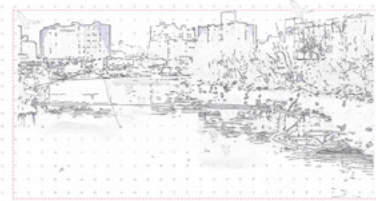
# COMMUNITY MAPPING

The occupants on the island and their structure of significance

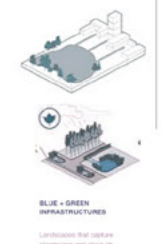
## MANHATTAN BEACH



## CONEY CREEK



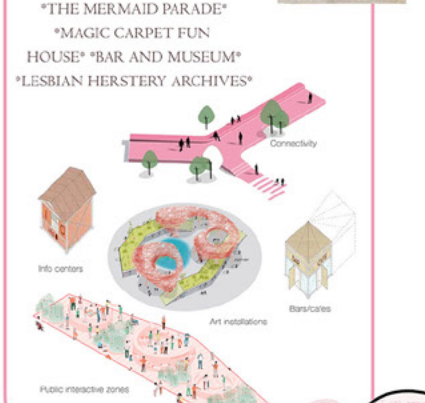
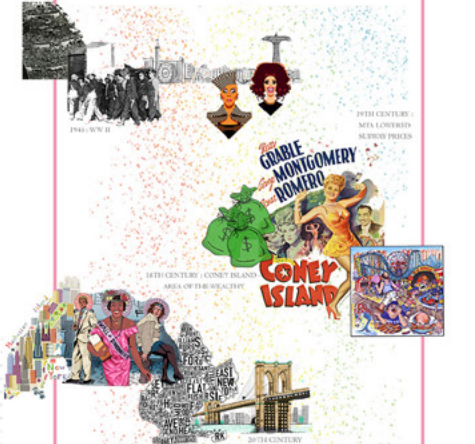
## BRIGHTON BEACH



## WEST BRIGHTON BEACH

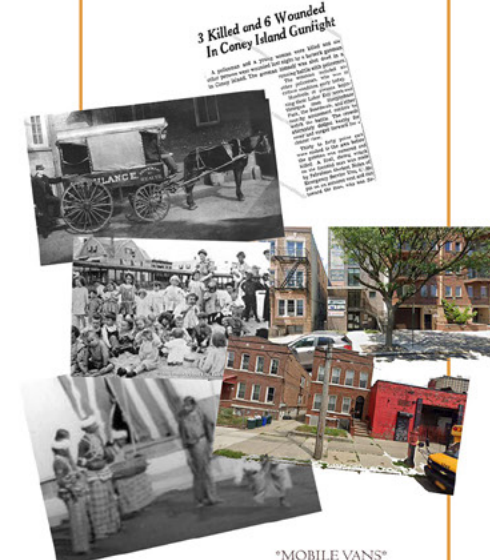


Dear Mr. Coney Island:  
Can you please tell me who ran the Magic Carpet Ride in Coney Island. Also where did the fat laughing lady Minnie Ha Ha come from. Where was she made. Are there some pictures of her that I can purchase? What about her voice? I am also interested in pictures of the dragons cave and the donkey game next to the Magic Carpet Ride. What information can you give me on the man that painted the inside of Playland. I remember the beautiful pictures painted on the walls as well as all over.  
- Sal

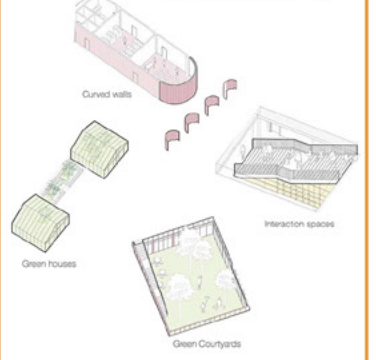


"...I guess I was a curiosity to them. Some of them were a curiosity to me. I been around peculiar people most of my life, but I they saw no woman like me before."

Dear Mr Coney Island :  
I have some letters from a great aunt written in 1917 when she was working for the summer at Health House, on Surf and W. 23rd street. It seems to have been a place for mothers to send their children. She wrote of a measles quarantine, which was unexpected. Any idea of what this place was? Thanks!  
- Susan



\*"MOBILE VANS"  
\*HEALTH HOUSE"  
\*BLACK VETS FOR SOCIAL JUSTICE"  
\*CONEY ISLAND COUNSELING CENTER\*



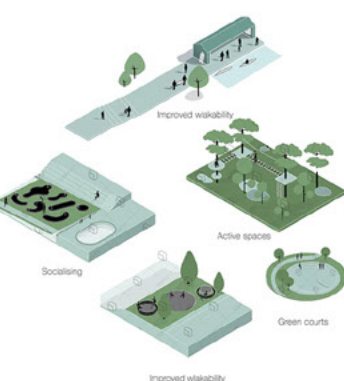
Dear Mr. Coney Island :  
When I was a student in NYC in 2007, I spent a lot of my time photographing a wonderful group of people who tended to a garden and I forget where that garden used to stand. It was off of Mermaid Ave. and I wanna say 21st St. Any help would be greatly appreciated  
- Jason



XI - Does this foundation only support projects in Coney Island? How did you move into this senior apartment?  
AW - It was like this. The senior apartment project is only a very small part of their program. They have built six senior housing projects. When I applied for a senior apartment, this one hadn't been finished. So I went to Livingston Avenue for an interview. I was lucky to get this nice apartment. It might be because I am disabled. The government requires that these should be 3-5 percent of the housing project assigned to the disabled.

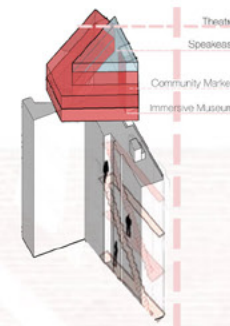
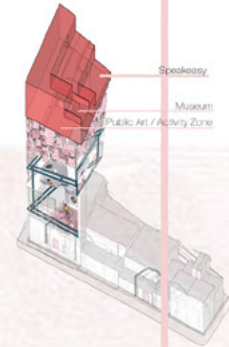
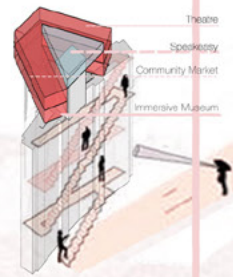
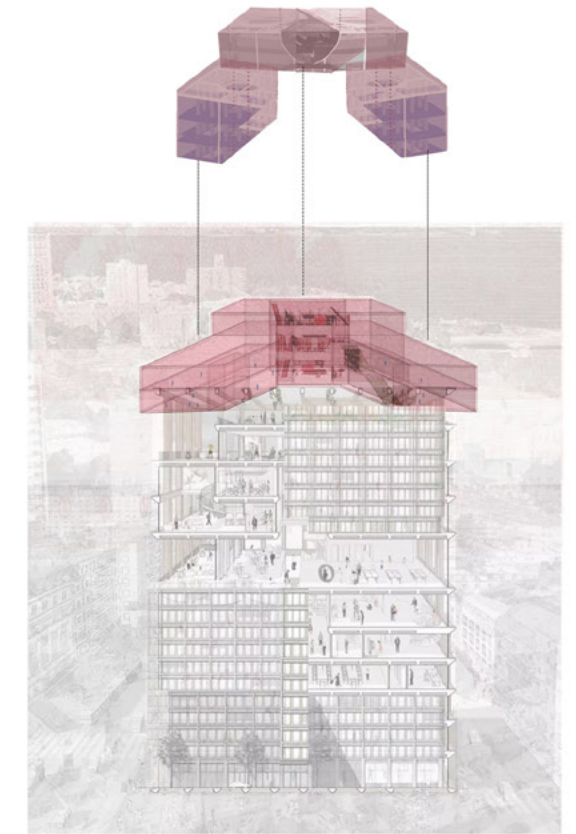
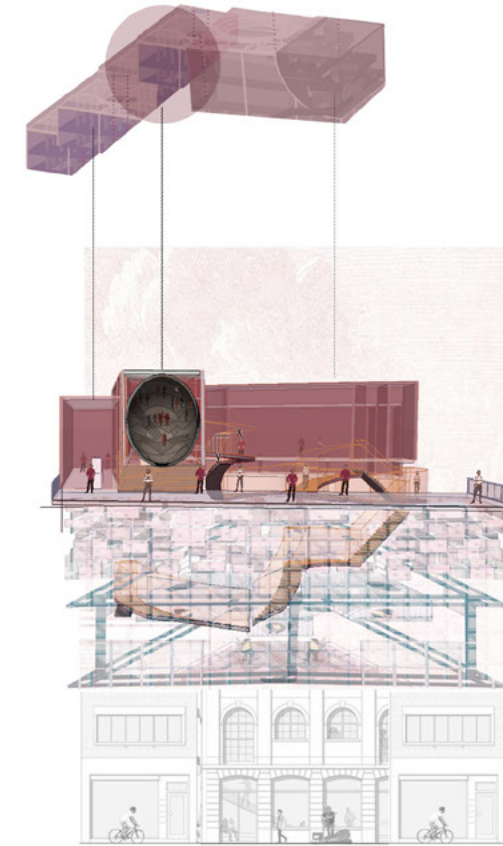
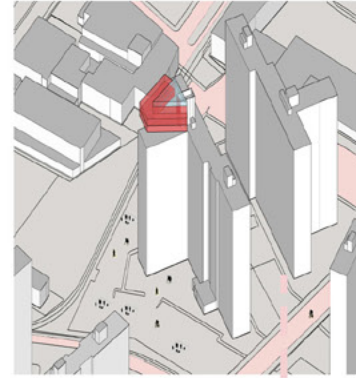
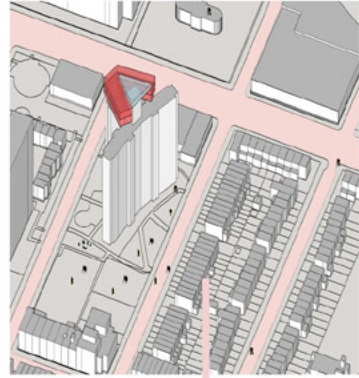
XI - How many classes do you teach a week? And how many students do you have? How long is each class?  
Junhua Zhao - A class is about an hour. We would stretch for an hour and then do Tai Chi for another one hour. I also volunteered in other programs, such as a handicraft course where I helped other seniors to use beads to make dog, cat and Christmas tree-shaped ornaments. They really enjoyed doing it. It's also an exercise for their fingers (and hands) and should be good for their mental health.

\*"MOBILE VANS"  
\*ELDERLY NURSING HOME"  
\*INTERGENERATIONAL ACTIVITIES\*

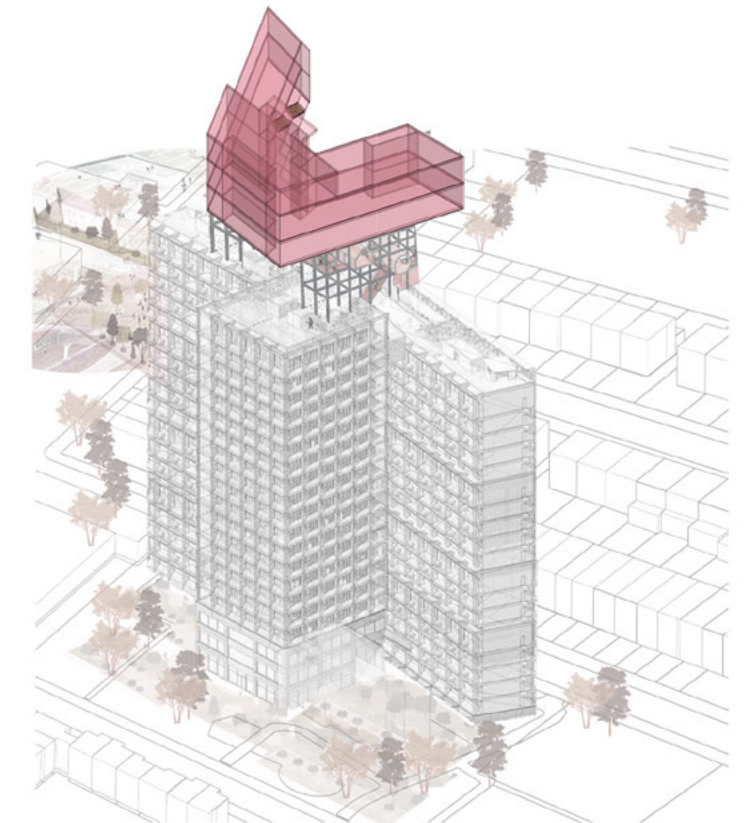
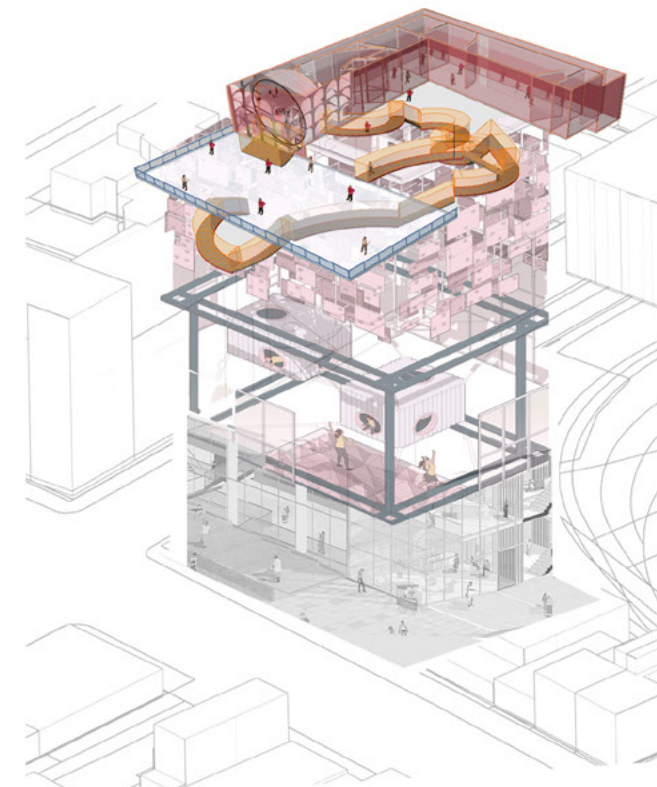


# TEMPORAL MARKERS

'Markers' act as a visual aid to help the users locate the structures of significance. These insertions and projections are located on existing structures in and around the island



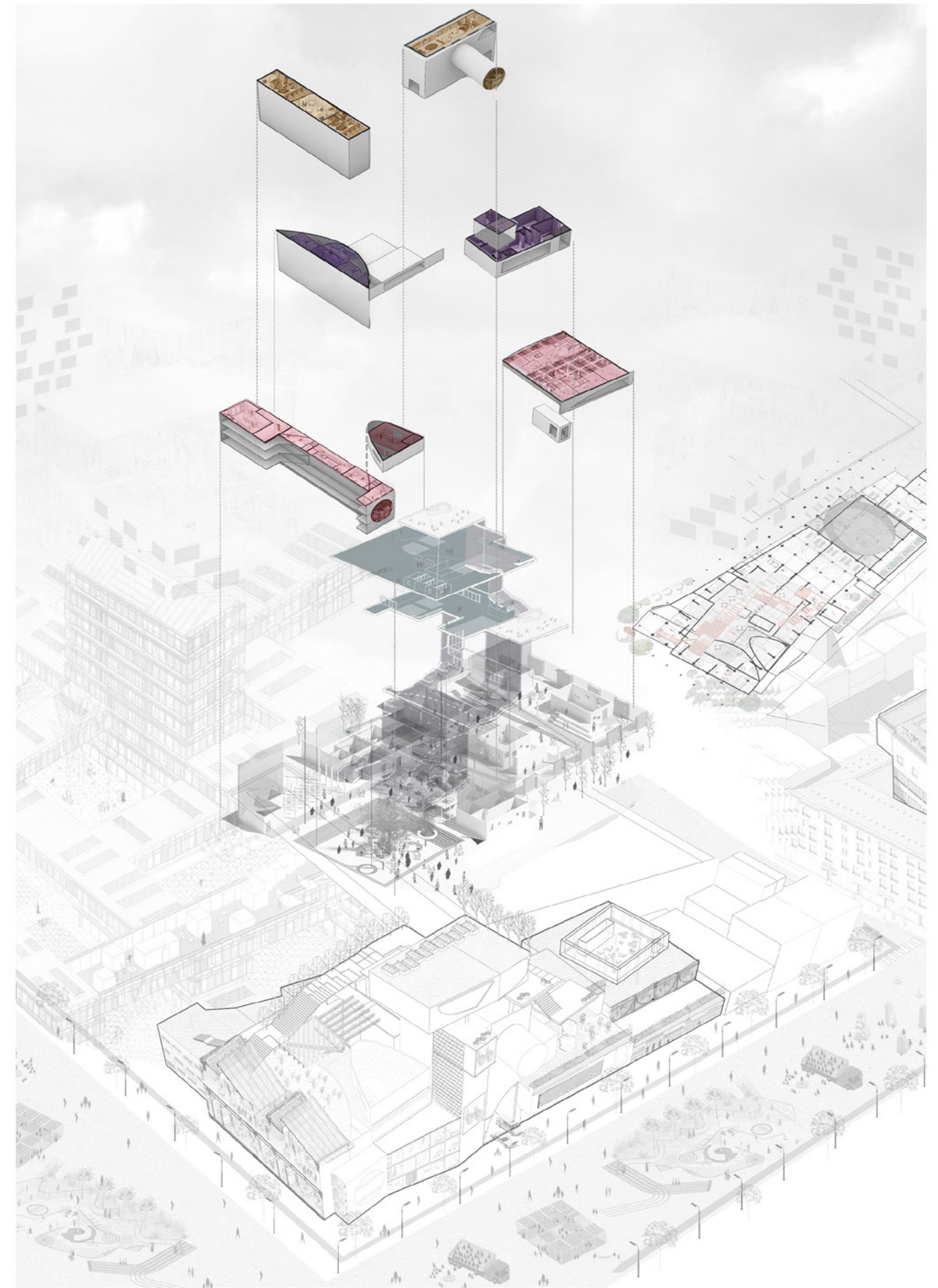
Markers are located on buildings of significance, creating a central node for various communities located on the island to gather. Amenities like Mobine vans and vendor specific street activities create a slow street - making the entrance to the marker open to all!





# IMMERSIVE PROJECTIONS

*An existing public infrastructure - connected to the main subway line and neighboring amenities is fitted with a marker - showing the possibilities of various connective nodes within Coney Island. The juxtaposition of a slow street with the existing structure and marker create new possibilities.*



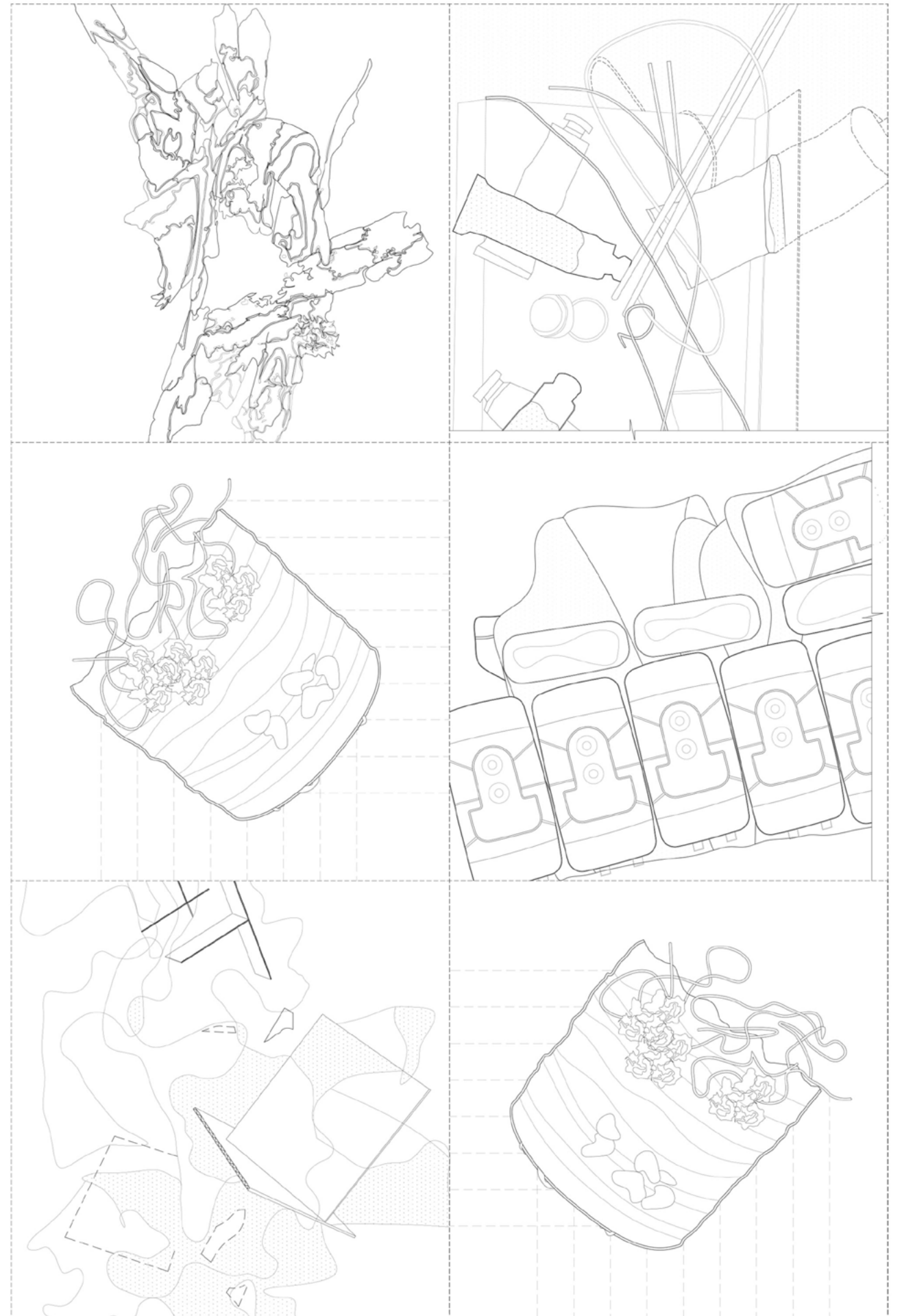
04  
**M A K E**

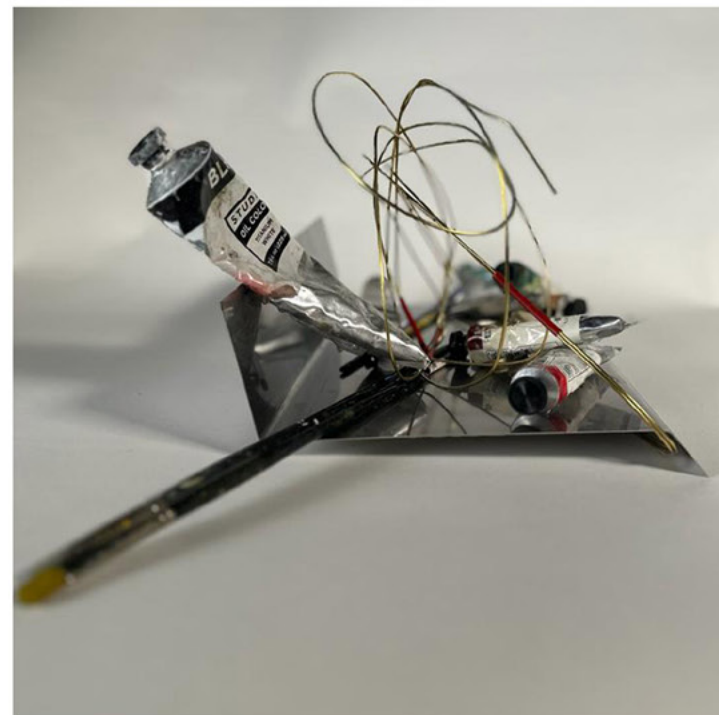
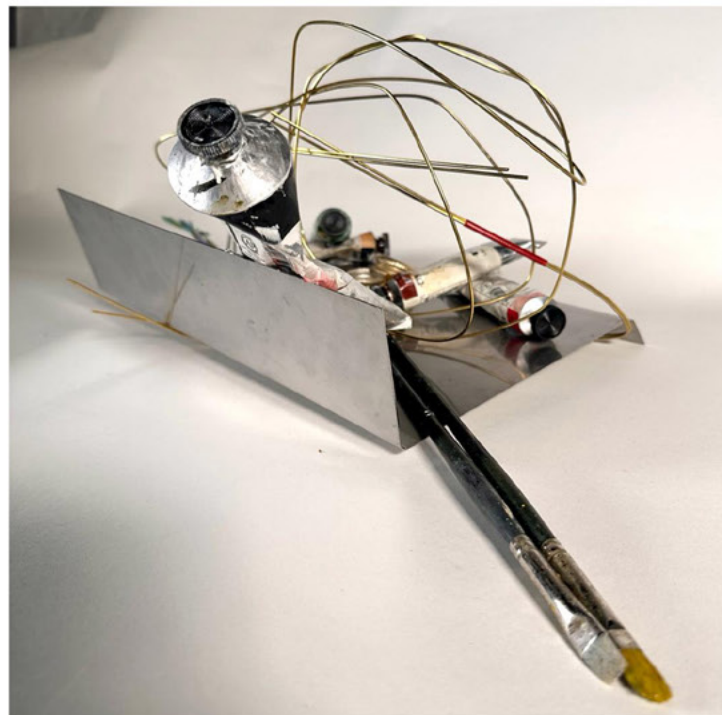
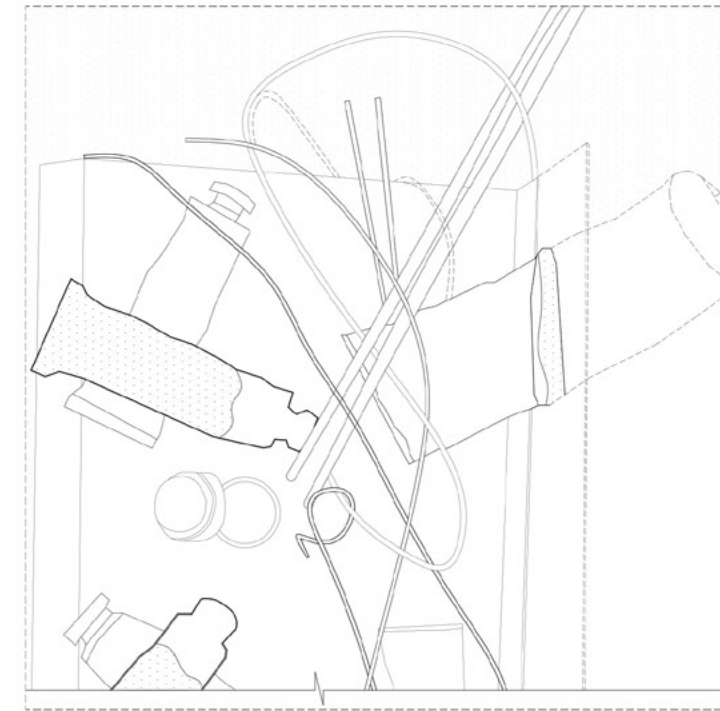
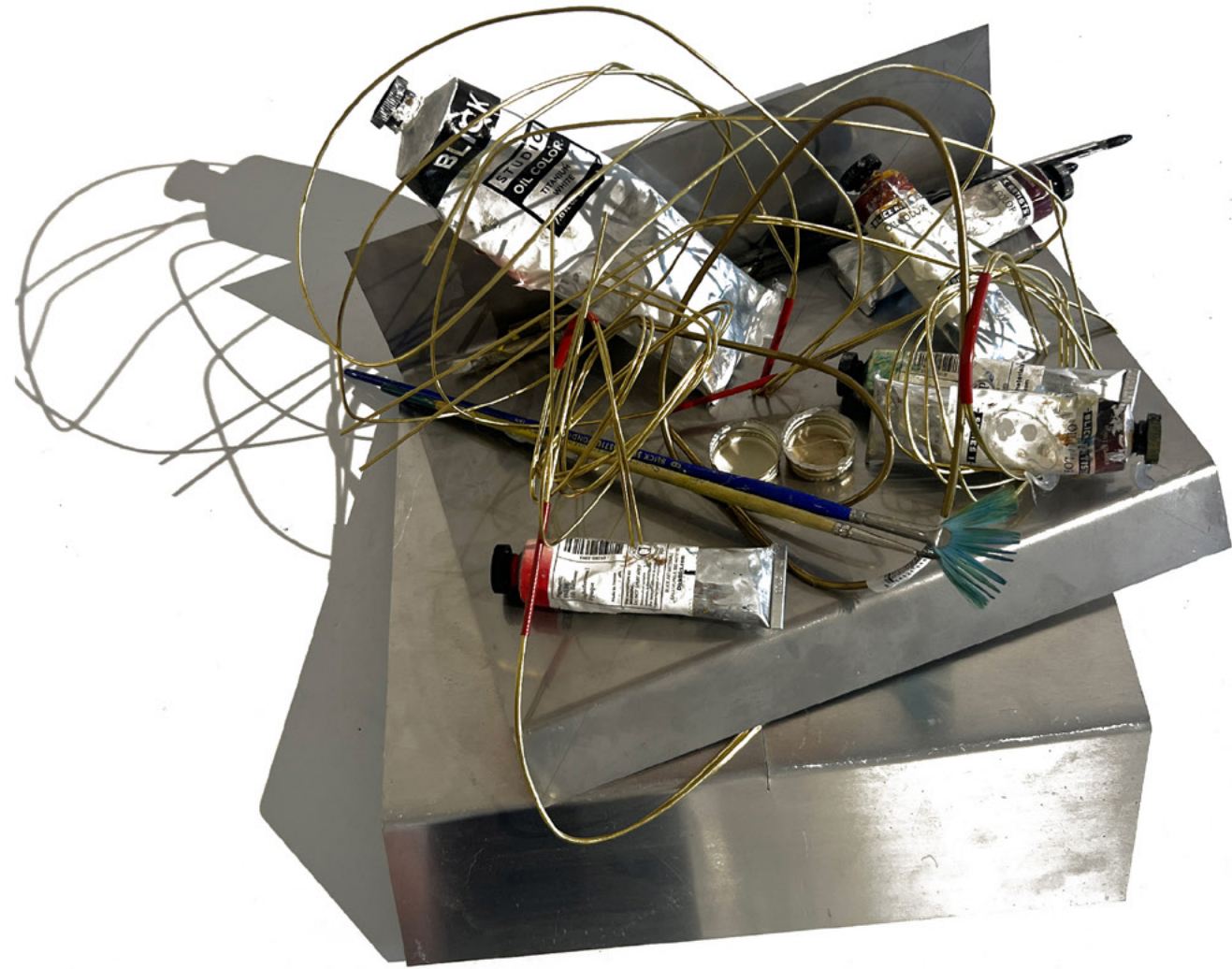
*Instructors : Ada Tolla & Guiseppe Lignano*

Visual Studies and Representation Elective, Fall 2023

**OBJECT INTRIGUE; A Sensory Experience**

This design intensive explored the power of materiality to evoke emotion and engage the senses through a series of 12"x12"x12" volumes crafted from everyday materials. Interactive sessions fostered a dynamic dialogue, where each volume became a "theatrical recipe" – a playful exploration of form, function, and personal fascination.



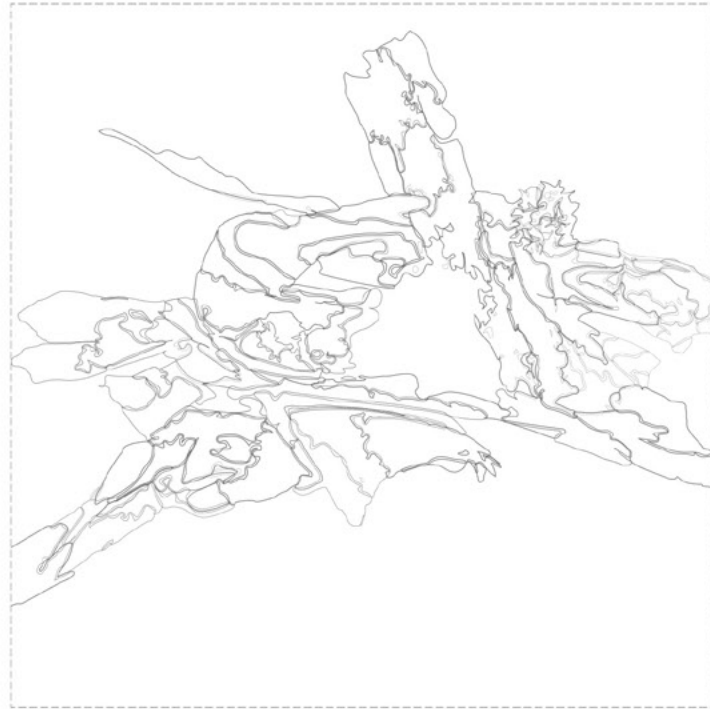


## CONVERGENCE ; metal

A fabricated steel container, formed by two folded plates, serves as a repository for artifacts of artistic endeavors. Five slender paint tubes and a larger one, remnants of a bygone creative period, rest within alongside weathered tools.

Beyond the enclosure, the contents are further protected by a decorative element with symbolic significance. Four, three-foot lengths of gold wire are interwoven, creating a latticed screen across one facade. This functions as both an aesthetic accent and a visual safeguard for the artistic treasures within.

The final details of the assemblage incorporate two bottle caps, salvaged from Amsterdam Avenue. Fixed to the exterior, these caps introduce a narrative element, hinting at past journeys and accumulated experiences. Collectively, these elements create a cohesive composition, a testament to the enduring relationship between materiality and the preservation of memory.



## METAMORPHOSIS ; wood

Beneath the vibrant canopy of Riverside Drive, a mosaic of fallen leaves caught my eye. These auburn and ochre fragments, castaways of the seasonal shift, lay nestled amongst the gnarled roots of aging trees. Each leaf, adorned with a tacky residue, whispered tales of summer's warmth and the inevitable approach of winter's chill. Intrigued by their natural beauty, I envisioned a way to capture their ephemeral essence.

Two options wrestled within my mind – to stitch them together, a delicate union of thread and foliage, or to fasten them with pins, a more structured approach. Ultimately, I mirrored the interconnectedness of nature itself. Intertwining the fallen leaves, I wove them into an organic tapestry, a testament to the enduring beauty of the earth. This creation became a symbol of resilience and the ever-changing cycle of life.



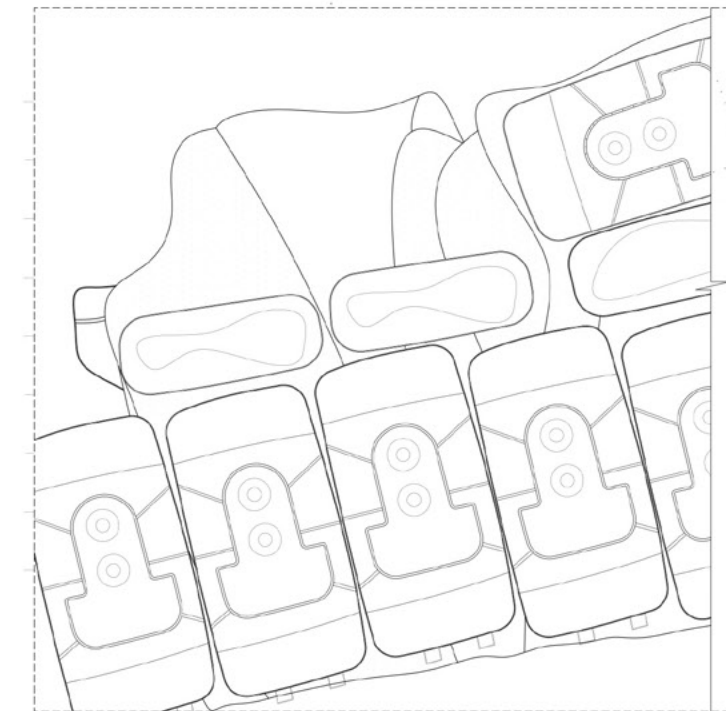


## DRIFTWOOD ; wood

California's coastline coughed up a treasure - a sturdy log, weathered and salty from its ocean voyage. Its surface, like a worn map, hinted at adventures on distant waves. Inspired, I grabbed a box of nails, each a little different, each with its own past.

One by one, the nails sank into the driftwood's crevices, some short jabs, some deep dives, all finding a hold in the seasoned wood. Next came the rope, six feet of it, patiently looped and knotted around the protruding nails. With every pull and twist, the rope tightened, testing the combined strength of wood and nails.

The final tug, and the transformation was complete. No longer just driftwood, it was something more - a testament to resourcefulness and second chances. Standing firm against the relentless tide, it held whispers of the sea, a reminder of distant shores and a promise of a fresh start.



## DISCARDED TREASURES ; plastic

Cardboard boxes at OPS overflowed with spent ink cartridges, their colorful shells a stark contrast to their impending fate – the trash compactor. Each held the remnants of countless printed pages, their potential stories forever silenced.

But amidst, a spark of inspiration ignited. Salvaging a box destined for the same fate, I saw not just plastic waste, but a canvas for transformation. I wove it into a new form, its folds and creases whispering tales of past deliveries.

11 Ink cartridges, once vibrant providers of color, now became the building blocks of a new creation. Their curved plastic bodies, once cradling ink, were now cradled by the plastic embrace.

This wasn't just a container reborn – it was a defiant stand against waste. In its new form, the cartridges weren't of silenced stories, but of a new chapter – a testament to resourcefulness and the boundless potential found in the scrapyards.



05

# H O M E IS WHERE THE TOXINS ARE

*Instructors : Marta H. Wisniewska*

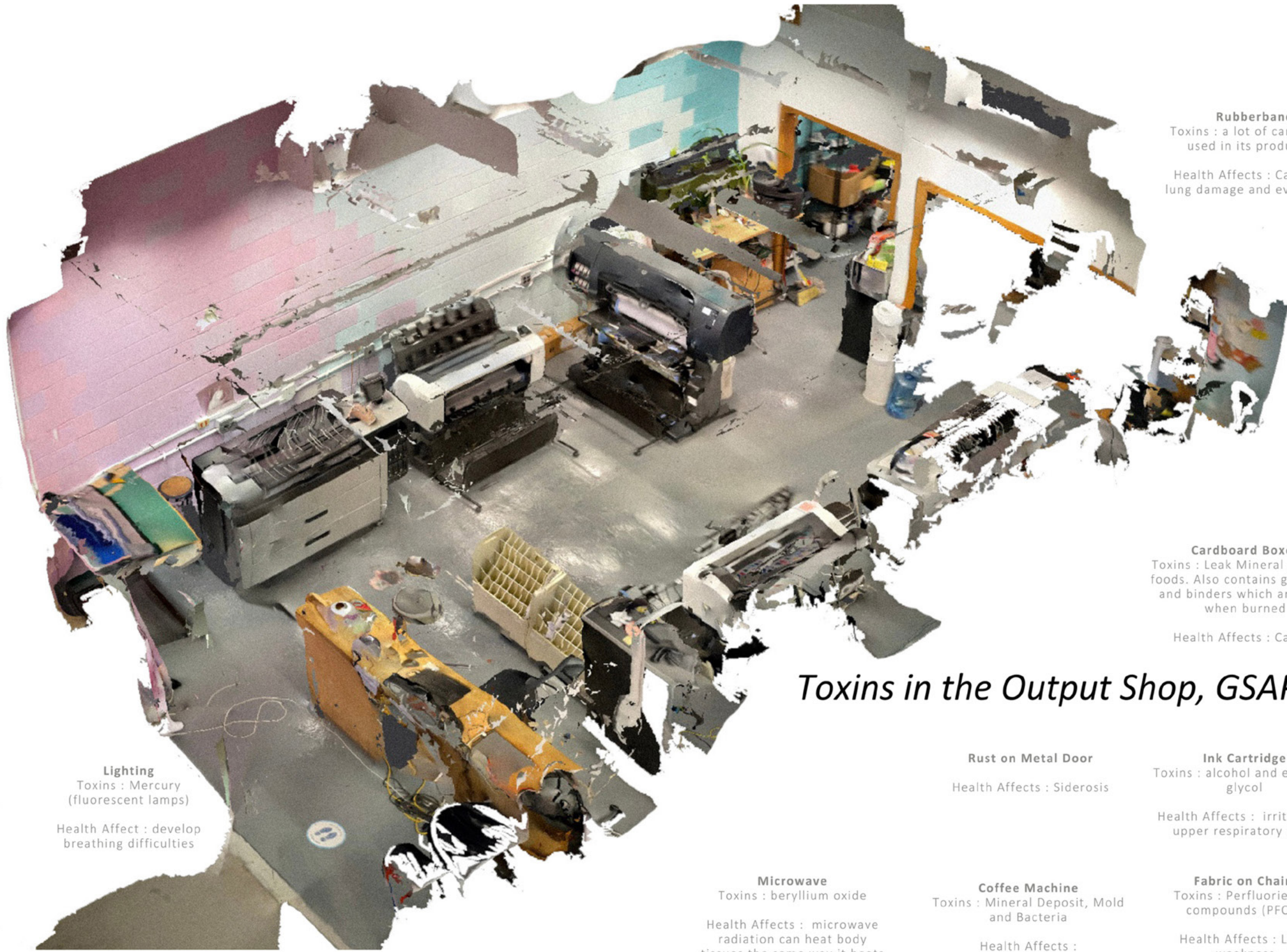
Group Partner- Simar Kaur Kochhar  
Building Tech Elective, Fall 2023

## LOCAL MATERIALS, GLOBAL IMPACT

*TOXINS* challenged me to explore the intersection of architecture and sustainability. I delved into the complexities of material production and its environmental impact. I was inspired by the potential of innovative, circular materials to address design challenges in the domestic environment.

Through group discussions, We investigated low-tech production processes and connected with local resources. Ultimately, we developed our own response to the initial challenge by designing a unique architectural product that celebrated the identified material. This course combined architectural analysis with material research and design thinking, culminating in a final exhibition showcasing our work.





## Toxins in the Output Shop, GSAPP.

**Plastic Tape**  
 Toxins : phthalates, lead, cadmium, and/or organotins

Health Affects : central nervous system, skin, liver, immune system, and reproductive system.

**Piping**  
 Toxins : dioxin and vinyl chloride monomer (PVC manu. and disposal), lead/antimony solder

Health Affects : Increases a person's risk of developing cancer.

**Laminate Surfaces**  
 Toxins : exposure to formaldehyde

Health Affect : Irritation and breathing problems

**Metal Cutters**  
 Toxins : chromium (Cr), vanadium (V), molybdenum (Mo) and tungsten (W)

Health Affects : Brain damage, kidney and liver failure.

**Printer**  
 Toxins : emits styrene gas when heated at high temperatures

Health Affects : Injury to their nervous systems.

**Vinyl Flooring**  
 Toxins : cadmium, toxic phthalates and lead

Health Affects : disrupting reproductive health, causes cancer

**Lighting**  
 Toxins : Mercury (fluorescent lamps)  
 Health Affect : develop breathing difficulties

**Rubber Cutting Mat**  
 Toxins : Fumes caused by VOC's

Health Affects : irritation of the nose, throat and lungs; coughing; difficulty breathing; and sneezing

**Paint**  
 Toxins : disrupting reproductive health

Health Affects : headaches, eye watering, dizziness and breathing problems

**Wire & Cable Jacketing**  
 Toxins : heavy metals, HFRs. ortho-phthalates (PVC)

Health Affects : damage the liver, kidneys, lungs, and reproductive system.

**Microwave**  
 Toxins : beryllium oxide  
 Health Affects : microwave radiation can heat body tissues the same way it heats food

**Wooden Stands**  
 Toxins : Adhesive resin - urea-formaldehyde (UF) or phenol formaldehyde (PF).

Health Affects : cancer of the nasal cavity, sinuses and nasopharynx.

**Rust on Metal Door**  
 Health Affects : Siderosis

**Coffee Machine**  
 Toxins : Mineral Deposit, Mold and Bacteria  
 Health Affects : Gastrointestinal issue

**Fish Tank**  
 Toxins : Ammonia  
 Health Affects : bacteria and parasites that can cause skin infections

**Rubberbands**  
 Toxins : a lot of carcinogens used in its production.  
 Health Affects : Can create lung damage and even cancer

**Cardboard Boxes**  
 Toxins : Leak Mineral oils into foods. Also contains glue, inks and binders which are toxic when burned  
 Health Affects : Cancer

**Ink Cartridge**  
 Toxins : alcohol and ethylene glycol  
 Health Affects : irritate the upper respiratory tract

**Fabric on Chairs**  
 Toxins : Perfluorinated compounds (PFC's)  
 Health Affects : Liver weakness

**Cinder Block wall**  
 Toxins : calcium oxide, aluminum oxide, and magnesium oxide, asbestos  
 Health Affects : Cancer





## ALTERNATE BINDER

Five alternative unfired binding materials are chosen with the aim to investigate with different types of material based on clay, limestone, dolomite or basalt

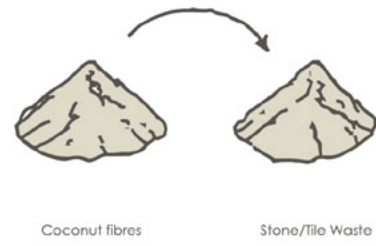
Among the five materials were three fine aggregate powders produced commercially by Agate Minerals, Israel, namely: Kalgir – a mixture of ground limestone and clay, Mamshit – a red clay product, and Motza – a dolomitic clay. The other two materials were waste by-products of aggregate quarries, designated here as Basalt and Amiad. Amiad is a washout sludge from a limestone aggregate quarry that contains clay and limestone.



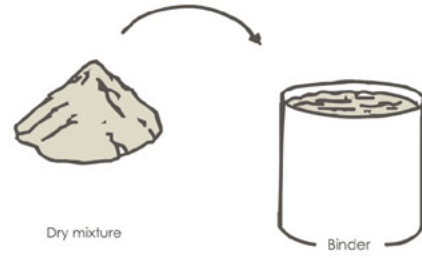
## COCONUT WASTE

Using Agricultural Waste allows us to highlight the cycle through which crops and dwellings can rise out of the ground to support the land and community, before biodegrading and returning nutrients to the soil.

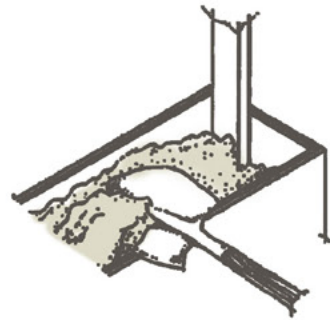
Panels can be made from the textured husks of coconuts. These hardshells, covered with wiry fibres, are typically discarded as part of the process used to produce coconut water and cosmetic products. The return to the communal table comes full circle to represent an important step toward reconnecting the act of eating with acts of food production.



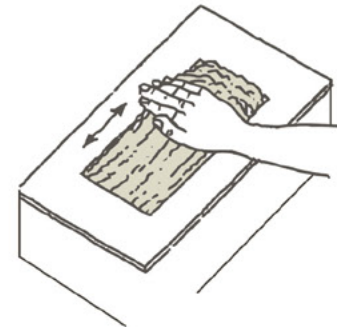
STEP 1  
*dry mixing*



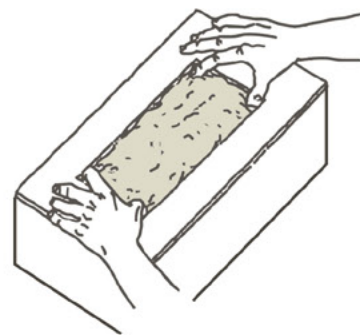
STEP 2  
*wet mixing*



STEP 3  
*coconut & binder mixture*



STEP 4  
*levelling the mixture*



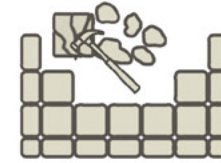
STEP 5  
*compressing the mixture*



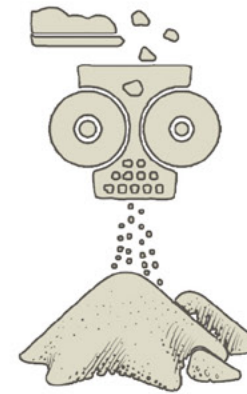
STEP 6  
*compression*

BINDER + FIBRE

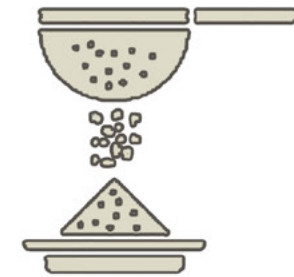
NATURAL AGGREGATE



STEP 1  
*crushing waste slate or ceramic tile using a hammer*



STEP 2  
*crushing broken flooring tiles to create a powder like consistency*



STEP 3  
*sifting any large chunks of stone to leave a fine powder*



STEP 4  
*fine aggregate*



CUTTING THE FIBRES



CRUSHING THE AGGREGATE



BINDER OUT OF CLAY, LIME AND WATER



BINDER + FIBRE



SLURRY POURED INTO MOULDS



COMPRESSED TO REMOVE EXCESS WATER



CLADDING PANELS  
THE FINAL PRODUCT



06

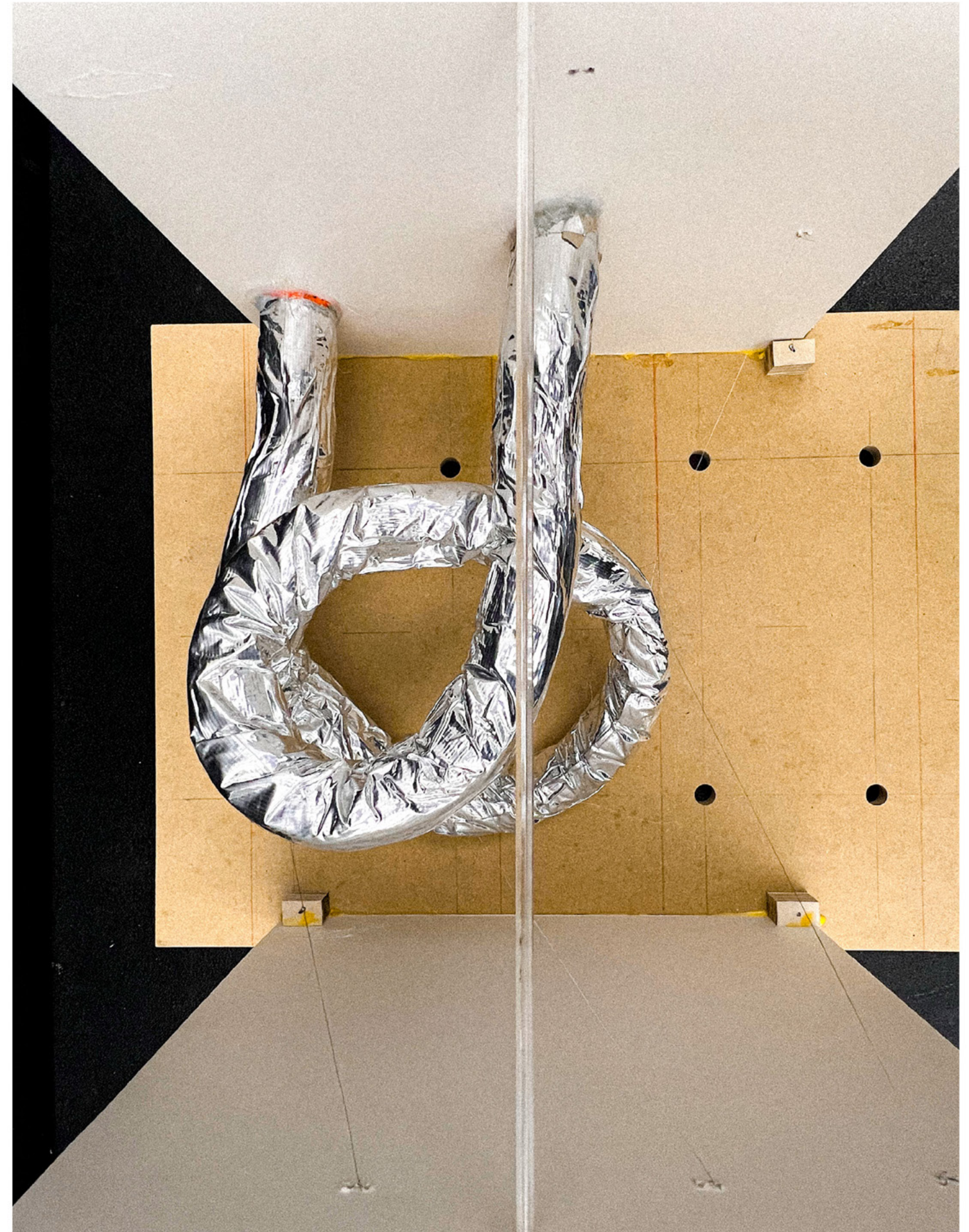
## THE OUTSIDE IN PROJECT

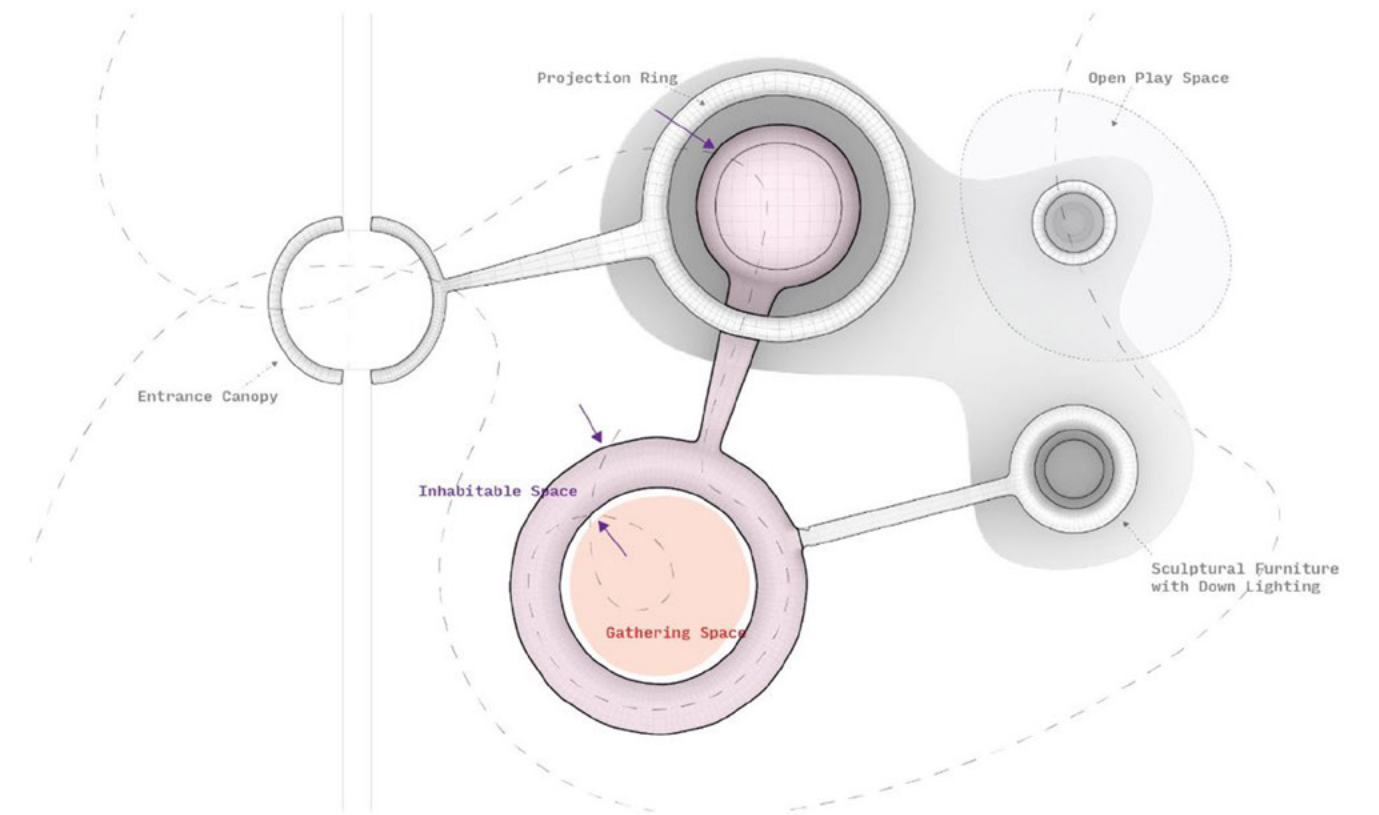
*Instructors : Galia Solomonoff & Laurie Hawkinson*

Collective Work  
Building Tech Elective, Spring 2024

### EXHALE; An Inflatable

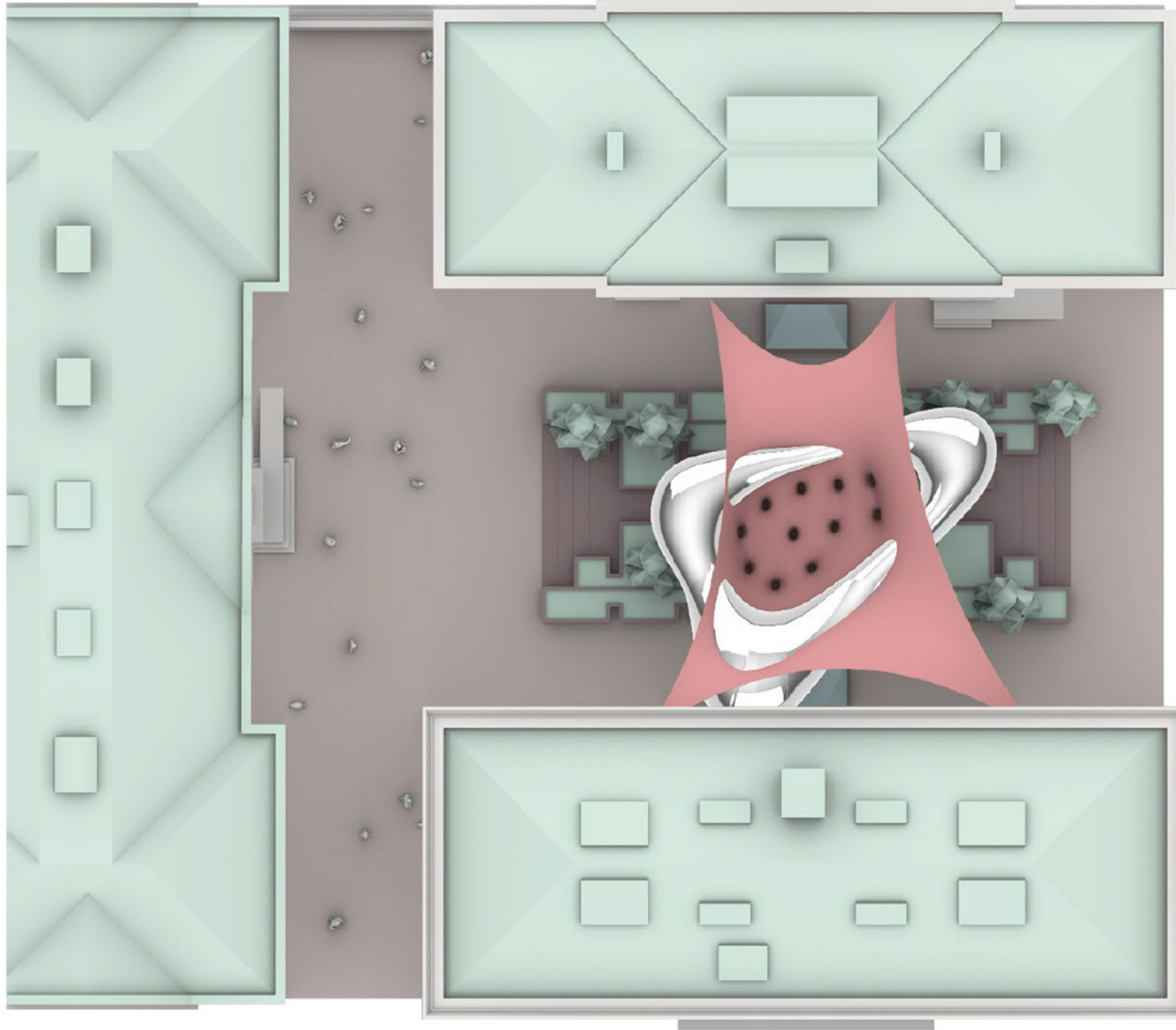
Exhale is a 2-part student installation that plays with the viewer's perception of geometry and light, and invites a new element of activation and playfulness to Avery Plaza.





## THE PROPOSAL

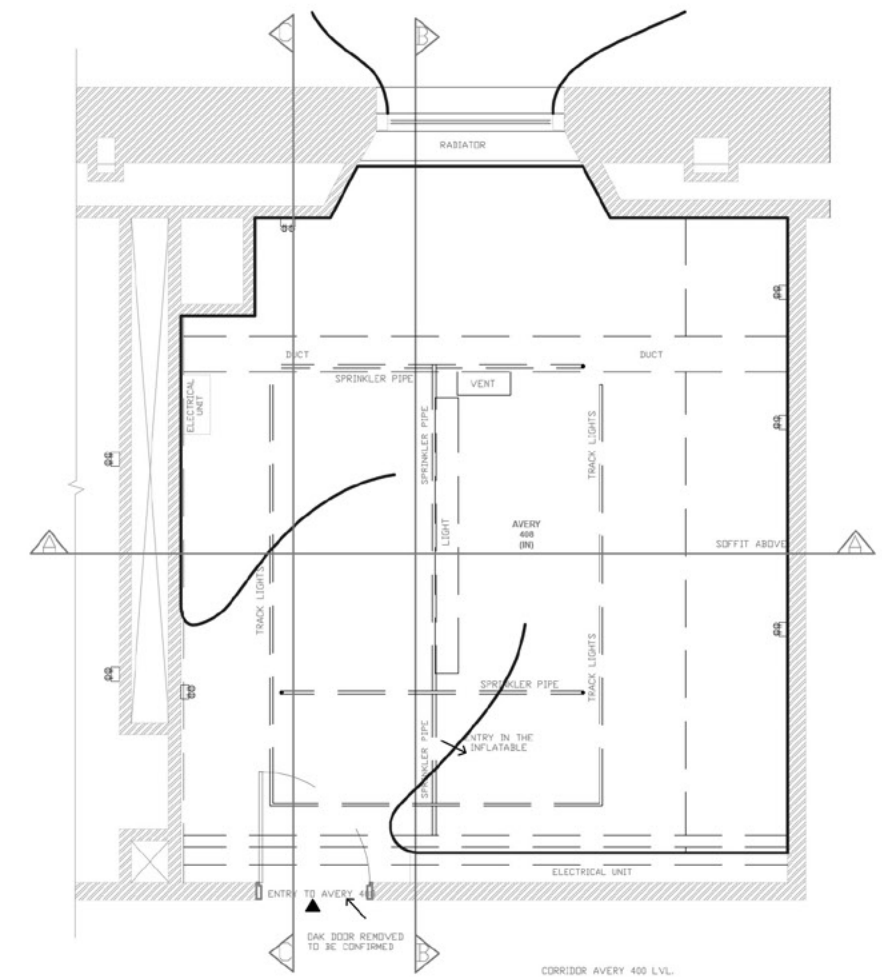
Imagine a giant inflatable, partially placed indoors entering Avery. Inside, different zones offer interactive experiences. The whole installation forms a unique "courtyard" effect, drawing your gaze upwards and encouraging exploration. The inflatable transforms into a collaborative art piece by allowing students of GSAPP project their memories, making it feel like a space you can truly own and interact with.



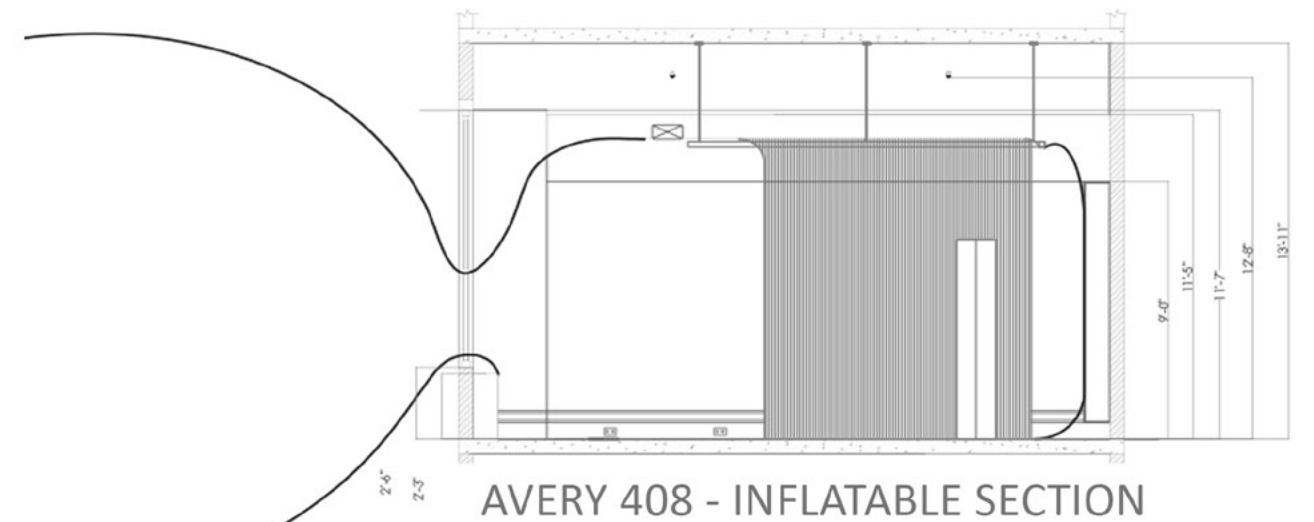
## THE DESIGN

The exterior portion is a 20.39 m long x 19.51 m wide x 7.84 m high inflatable donut powered by 4 blowers, suspended by 16 cables anchored to 4 steel beams in Avery and Fayerweather Halls, and tied to 9 points on the ground in Avery Plaza. A net rests atop the inflatable donut, descending into the center with 8 tube-like appendages that serve as moveable, adjustable seating.

The interior portion is a 6.36 m long x 5.13 m wide x 2.55 m highly interactive installation that extends from the exterior inflatable into Avery Hall, occupying the inside of classroom Avery 408. The materiality is inverted from the metallic exterior to one of darkness and discovery.

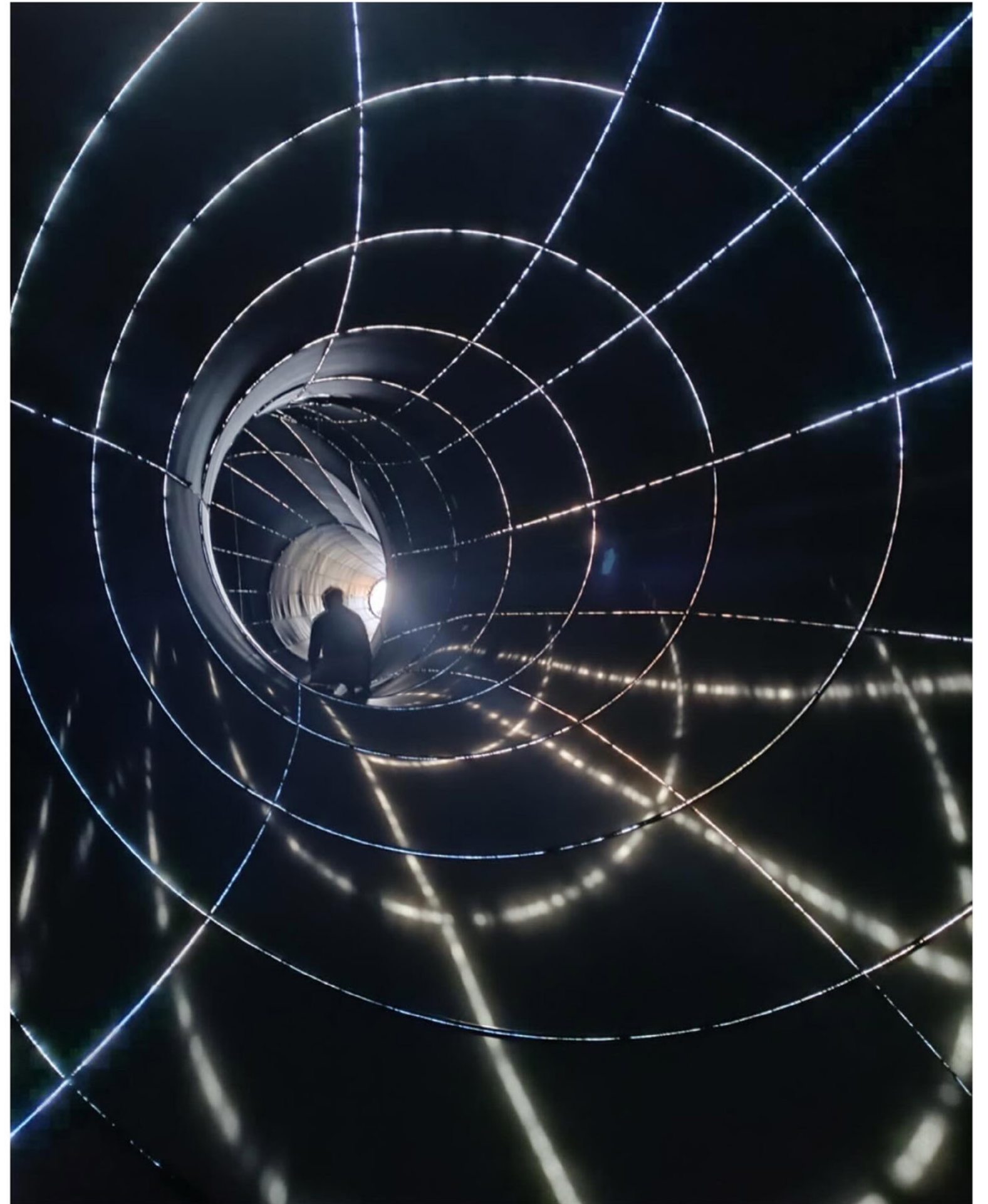
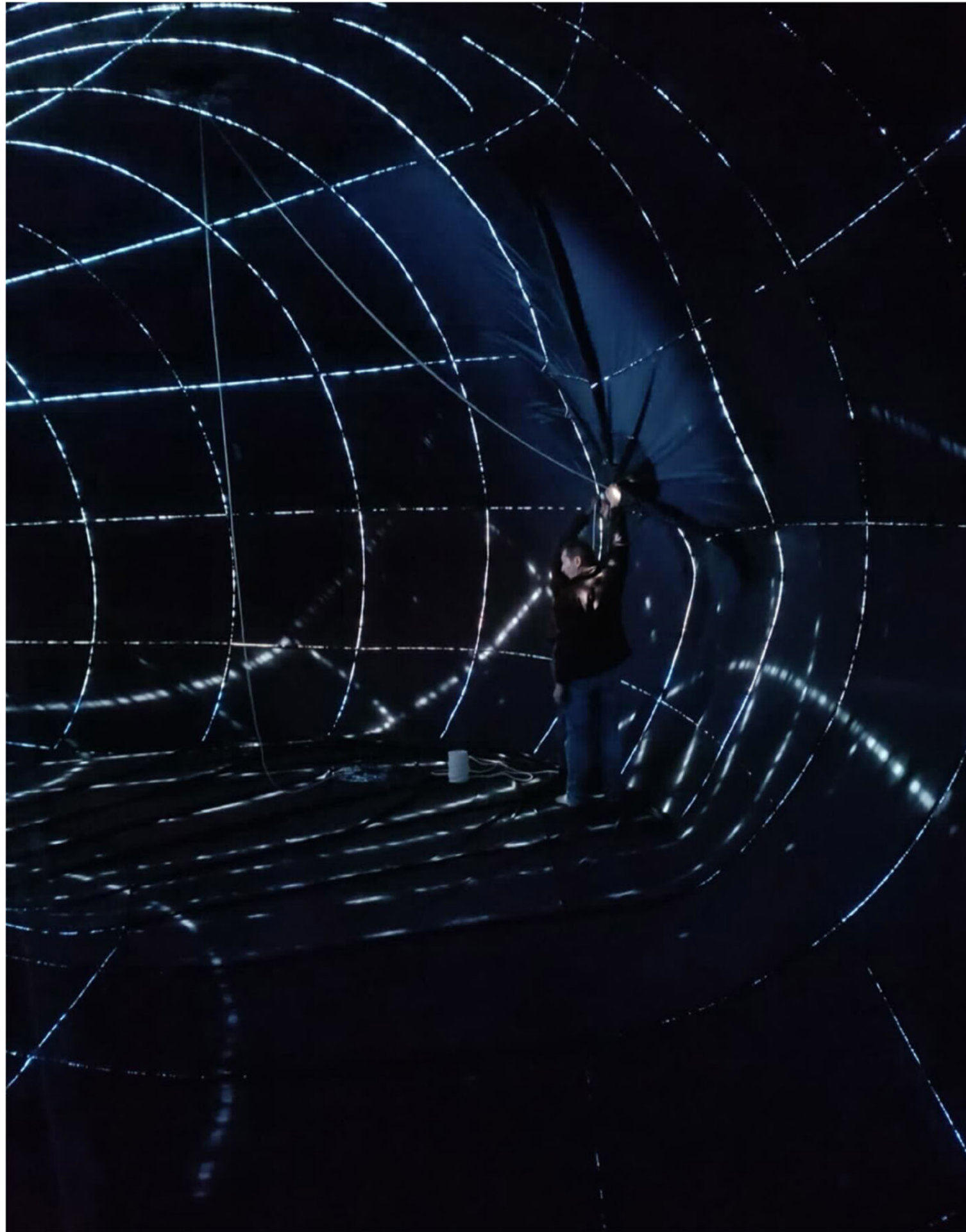


AVERY 408 - INFLATABLE FLOOR PLAN



AVERY 408 - INFLATABLE SECTION







07

## EMERGING OPTIMISM

RESOURCES AND THE 4TH INDUSTRIAL REVOLUTION

*Instructor : Sean A. Gallagher*

Building Tech Elective, Spring 2024

### BIO FORGE

A natural solution for our plastic problem



- Serves as a blueprint for future large-scale brownfield remediation using engineered bacteria.
- Offers a sustainable solution for plastic waste management, reducing environmental pollution and promoting a circular economy for plastics.
- Additionally, revitalized brownfields provide valuable land for future development, boosting the local economy and creating a thriving community.



But, what does the future look like?

A significant shift in tackling plastic pollution and brownfield remediation. It has the potential to revolutionize waste management, land restoration, and green job creation, paving the way for a cleaner and more prosperous future.

## JOBS, JOBS, JOBS!

**BIO ENGINEERING**  
Scientists specialize in maintaining and optimizing the bacteria for efficiency and safety.

**RESOURCE RECOVERY**  
Workers manage the collection and processing of the treated soil and the bio-material.

**LAND RECLAMATION**  
Professionals prepare the brownfield for new development, potentially creating further jobs in construction and other sectors.

**THE PROBLEM?**  
Plastic pollution and Brownfields  
Millions of tons of plastic waste, especially polyethylene plastic from single-use packaging, pollute our environment and overwhelm landfills. Brownfields contaminated sites from past industrial activity, become unusable and hinder development.

**THE SOLUTION?**  
Bacteria eating Plastic  
Bacteria : Ideonella Sakaiensis  
Type of Plastic : PET Plastics

**BROWNFIELD?**  
HUNTERS POINT NAVAL YARD,  
SAN FRANCISCO

466 Acres of water & 400 acres of land

1 million cubic yards of solid waste

This targeted bioremediation approach is **deployed in a controlled environment**, starting with a famous brownfield site - **Hunters Point Naval Shipyard in San Francisco, California**.

This former shipyard is a prime example of a **large, plastic-contaminated brownfield** hindering waterfront development.

**A TWO FOLD INDUSTRY**

ENVIRONMENTAL CLEANUP

**WHAT?**  
The modified Ideonella Sakaiensis Bacteria

**WHERE?**  
Released into a Brownfield ; Hunters Point naval yard.

**FOR HOW LONG?**  
30 years

**WHAT HAPPENS TO THE LAND AFTER?**

**TREATED SOIL**  
The original soil, now free from polyethylene plastic contamination can be further enriched and used for various applications, potentially including **landscaping or even limited agriculture**.

**BIO MATERIAL**  
Over the 30 years, the bacteria will have continuously produced a significant amount of the **silk-like, biodegradable bio-material**. This material can be harvested and processed for use in various sustainable products, replacing traditional plastics.





КОНЗА ИИНСЯРАИ  
COLUMBIA GSAPP

...ineer bac  
plastic, make  
multipurpose spider silk

...st time, researchers  
...LAIR POLYTECHNIC IN

**Plastic-eating enzymes could help solve pollution problem**  
By Mayra Jones  
18 Oct 2013

**E. coli turns plastic waste into a valuable feedstock**  
The newly engineered *E. coli* strain works by producing enzymes that can transform terephthalic acid into shorter-chain acids, such as succinic acid and adipic acid. To complete the conversion of muconic acid into adipic acid, the researchers used a second type of *E. coli* - which produces hydrogen gas - and a palladium catalyst.

The researchers found that attaching the r...  
boards helped to improve their efficiency...  
that up to 79% of the terephthalic acid is...  
first-of-its-kind one-pot bio-cyclying pr...

**RPI researchers engineer bacteria that eat plastic, make multipurpose spider silk**  
For the first time, researchers have used bacteria to "digest" waste polyethylene into ethylene...

**"THIS OFFERS A WAY TO MAKE PLASTICS WITHOUT HAVING TO DIG OUT MORE FOSSIL FUELS"**  
- DR. ELIZABETH BELL, POSTDOCTORAL RESEARCHER, US NATIONAL RENEWABLE ENERGY LABORATORY

**THE BY PRODUCT "BIO-INSPIRED SPIDER SILK"**

**These Microbes Eat Water Bottles**  
SCIENTISTS  
Rensselaer Polytechnic Institute  
Rensselaer Polytechnic Institute

**THE BACTERIA - "Pseudomonas aeruginosa"**  
naturally consume polyethylene as a food source

**1 FERMENTATION**  
Plastic is *predisgested*

**WAXY SUBSTANCE**  
Depolymerized the plastic by *heating* it under pressure

**PLASTIC DERIVED WAX**  
Placed at the bottom of a flask, a *nutrient rich source* for bacteria

**72 HOURS LATER**  
Strained bacteria is now *Purified Silk Protein!*

**PROTEIN THREAD**  
Protein can be *spun into thread* and make into other products

**SPIDER SILK PRODUCTS**



BIOFORGE  
A Natural solution for our Plastic Problem

08

# rAADIO

season 4 / "What if?"

*A podcast produced by the students of AAD*

Team : Harshini Ashok, Ammar Hussain, Preethi Ganesh,  
Vaishnavi Chandra Kumar, Hadass Rozental, Manfei Shi and Foteini Kallikouni



## **Episode 1. "Truth or Tale: Post-Colonial Realities"**

Where we oscillate between the blurs of fact and fiction in different post-colonial landscapes.

## **Episode 2. "Sensing Time: Understanding Constructs"**

We break down the frameworks that govern our perception of time, as we look at it as a framework of design possibilities.

## **Episode 3. "Queer Time: Situate in Context"**

Where we call it what it is. By "It" we mean our positionalities in situations of conflict and the way we respond to them.

## **Episode 4. "Psychedelics: Embodiments of Other Constructs"**

Venturing into the mind-bending experiences that challenge our conventional ways of knowing and reciprocally produce new ways of physically inhabiting post-Prohibitionist futures.



THANK YOU