

Woodlawn Cemetery: Biographical Research

Reichardt Mausoleum

Jacqueline Danielyan

Historic Preservation Studio 1: Fall 2021

Faculty: Andrew Dolkart, Claudia Kavenagh, and Kate Reggev

October 12, 2021



Northeast Facade of Reichardt Mausoleum

The Reichardt Mausoleum located in the Woodlawn Cemetery on Butternut Avenue was constructed in 1925. The Reichardt mausoleum was built immediately after the passing of Louis Reichardt. Louis Reichardt's wife Anna Reichardt, their son J. George Reichardt, and Louis' parents, George and Maria E. Reichardt also have a place in the mausoleum. The Reichardt mausoleum had in total 8 crypts, with 5 being taken, leading to the anticipation that they expected more members in their family.¹

Immigrating from the port of Hamburg in Germany, George and Maria E. Reichardt moved to New York and began their family in New York City, where their son Louis Reichardt was born in 1854.² Although they lived in New York, they would travel back and forth to

¹ Record of Interments by Farrington, Gould, & Hoaglund, 1925-1926, Box MM 14, Folder 90, Correspondence, specifications, notes and calculations, examination sheet, Avery Drawings and Archives Collections, Columbia University, New York.

² List or Manifest of Alien Passengers for the United, 1907. Prepared by Ancestry Library in association with the National Archives and Records Administration. (accessed Nov 1:28:00 EST 2021).

Germany, where Louis Reichardt met and married his wife Anna. In 1885, Louis and Anna's first daughter, Louise J. Reichardt, was born,³ and in 1893, their son J. George Reichardt was born. Unfortunately, J. George Reichardt only lived for 15 years, passing away in 1908 for reasons that are unknown. Following the death of their son J. George Reichardt, mother Maria E. Reichardt in 1900, and father George Reichardt in 1908 the remaining members of the Reichardt family forevermore moved back to New York in July of 1913.⁴

Although Louis Reichardt's occupation remains unclear, he was a man of substantial fortune. Anna was a stay at home wife, whose generous monetary shares and contributions were highly valued in the city of New York.⁵ Twelve years after moving back to New York City, Louis Reichardt passed away in 1925, leaving Anna and their daughter on their own. Louise J. Reichardt, the only member left of Anna's family, marries, becoming Louise J. Whipple,⁶ leaving Anna Reichardt alone. Louis Reichardt's earnings from his late estate were of great value, as they were enough to take care of his family. Anna retained a will of \$100,000 from this estate under the memory of Louis Reichardt and their son J. George Reichardt. When Anna Reichardt passed away in 1941, she made a generous donation of \$50,000 to the Lenox Hill Hospital, which cared for her, as well as granting her estate to her nieces and nephews.⁷

In 1925, after the passing of Louis Reichardt, Anna Reichardt made it an obligation to dedicate a place of sanctuary and remembrance for the Reichardt family. The mausoleum was

³ Thirteenth Census of the United States. 1910 Population, 1910. Prepared by Ancestry Library in association with the National Archives and Records Administration. (accessed Oct 8 10:34:00 EST 2021).

⁴ U.S. Passport Applications for Louis Reichardt. National Archives and Records Administration (NARA); Washington D.C.; Roll #: 1543; Volume #: *Roll 1543 - Certificates: 10126-10499, 28 Mar 1921-29 Mar 1921*

⁵ "Hospital Gets \$50,000 from Reielnirdt Estate: Five Nephews and Four Nieces to Share Remainder." *New York Herald Tribune (1926-1962)*, Mar 22, 1941. <http://ezproxy.cul.columbia.edu/login?url=https://www.proquest.com/historical-newspapers/hospital-gels-50-000-reielnirdt-estate/docview/1324059145/se-2?accountid=10226>

⁶ Fifteenth Census of the United States. 1930 Population, 1930. Prepared by Ancestry Library in association with the National Archives and Records Administration. (accessed Oct 11:26:00 EST 2021).

⁷ "Hospital Gets \$50,000 from Reielnirdt Estate: Five Nephews and Four Nieces to Share Remainder." *New York Herald Tribune (1926-1962)*, Mar 22, 1941. <http://ezproxy.cul.columbia.edu/login?url=https://www.proquest.com/historical-newspapers/hospital-gels-50-000-reielnirdt-estate/docview/1324059145/se-2?accountid=10226>

commissioned by Anna Reichardt from Farrington, Gould & Hoagland, Inc., known for the design and construction of many mausoleums throughout Woodlawn Cemetery. Having very strict proposals and plans, they created this mausoleum to “carry no faults”.⁸ Although at first sight the mausoleum may not carry oversights, through further explorations some problematic conditions were found.

Sitting on a circular plot, The Reichardt Mausoleum is encompassed by an assortment of trees and concrete pathways, creating a barrier between the surrounding mausoleums and the external world. Although the upkeep has not been maintained, two planters were thoughtfully placed on either side of the mausoleum, which would have been embedded with fresh flowers and plants. The entirety of the exterior of the mausoleum was constructed using perfectly handled full sheets of Barre granite. There is uniformity in the layout, including the joints between each slab being one-eighth inch apart from one another, whether on the facade or on the ground flooring. The Reichardt name of the family was cut into the front of the mausoleum, centered above the entrance to the interior of the mausoleum.⁹

Two Barre granite steps, the first being three feet wide and the other acting as the foundation of the building with both extending out eighteen inches in depth, lead to the Northwest facade and entrance to the mausoleum. Immediately, one is drawn to the two Doric columns to the left and right of the entrance, from which the abacus acts as a support for the lintel. When observing the lintel, the impression of Classical Revival style is apparent, including the inspirations from Roman and Greek forms. The lintel holds wreaths and garlands with rosettes.¹⁰ Although a very modest building, the mausoleum carried intricate details.

The thoughtfulness in detail and workmanship is apparent in the double-doorway entrance into the Reichardt’s mausoleum. To some extent, the architecture followed the Doric

⁸ Design #3343 Specifications by Farrington, Gould, & Hoaglund, 1925, Box MM 14, Folder 90, Correspondence, specifications, notes and calculations, examination sheet, Avery Drawings and Archives Collections, Columbia University, New York.

⁹ Ibid.

¹⁰ Harris, Cyril M., ed. *Illustrated Dictionary of Historic Architecture*. (Toronto: Dover Publications, 1983), 119, 211, 470

order, with the cymatium and corona above the doorway, although not intentionally atop of the abacus. The patinated bronze doorway is floriated around the frame, as well as scrollwork following down the middle, layered on top of reflective glass. Centered on both doors, lions head door knockers are prominent.¹¹ The lions head is known to provide power and protection,¹² which sensibly it did, as the entrance to the interior of the mausoleum retained difficulty. The right door contained a disguised lock, which at first glance one may not see. Only after observing and coming into close contact with the door, will one find the intricate lockset beneath a floreated element, which when lifted upwards reveals the lock (Figure 1).

The interior of the Reichardt's mausoleum kept a similar simplicity and serenity as the exterior. Upon entering, a stained glass window is primarily in view (Figure 2). Depictions of trees, flowers, mountains, and water are present, allowing bright sunlight to shine through from the south-facing windows. The chambers are located on the right and left sides. Each individual's name is carved and dated on polished Tennessee marble,¹³ otherwise known as Tennessee pink or limestone. To the right J. George Reichardt, Anna Reichardt, and Maria E. Reichardt, and to the left Louis Reichardt, and George Reichardt. There are six rosettes, one on either side of the crypts, as well as two on the ceiling, to provide support to the Tennessee marble.¹⁴

The contractors, Farrington, Gould & Hoagland, Inc. made it a crucial matter to maintain the change of airflow throughout the Reichardt's mausoleum. In total, there are 8 vents, each

¹¹ Design #3343 Specifications by Farrington, Gould, & Hoaglund, 1925, Box MM 14, Folder 90, Correspondence, specifications, notes and calculations, examination sheet, Avery Drawings and Archives Collections, Columbia University, New York.

¹² Willow & Stone. Willow and Stone. Last modified March 9, 2017.
<https://www.willowandstone.co.uk/blog/a-brief-history-of-the-door-knocker/>.

¹³ Design #3343 Specifications by Farrington, Gould, & Hoaglund, 1925, Box MM 14, Folder 90, Correspondence, specifications, notes and calculations, examination sheet, Avery Drawings and Archives Collections, Columbia University, New York.

¹⁴ Design #3343 Specifications by Farrington, Gould, & Hoaglund, 1925, Box MM 14, Folder 90, Correspondence, specifications, notes and calculations, examination sheet, Avery Drawings and Archives Collections, Columbia University, New York.

cut into the Barre granite. The vents are made of copper screens and grills,¹⁵ keeping the choices of materials to a minimum (Figure 3).

Although each decision was carefully thought out in order to prevent deterioration, throughout the years the conditions of biological growth have become apparent. As the sun is directly striking the Reichardt's mausoleum from the south side, the mausoleum has many zones which receive a great deal of shade. Primarily in between the Doric columns, the steps, the west, east, and north facade, cornice, and corona carry indications of biological growth, due to the moisture collected in those areas (Figures 4). Biological Growth is also present on the interior of the mausoleum, taking up the bottom section of Maria E. Reichardt's crypt, as well as the center of the floor (Figure 5). Other indications of deterioration due to weather are present, such as water damage to the facade from all corners. Signs of water markings follow the paths between each joint connection of the Barre granite (See figure 6).

The Reichardt's Mausoleum has been endowed, in order to appropriately maintain the building. When comparing the Reichardt mausoleum to the surrounding mausoleums throughout the Woodlawn Cemetery, the upkeep is evident, emphasizing the importance the Reichardt's carried throughout their time and in their memory.

¹⁵ Design #3343 Specifications by Farrington, Gould, & Hoaglund, 1925, Box MM 14, Folder 90, Correspondence, specifications, notes and calculations, examination sheet, Avery Drawings and Archives Collections, Columbia University, New York.



Figure 1. Hidden Lockset



Figure 2. Stained Glass Window



Figure 3. Copper Screen

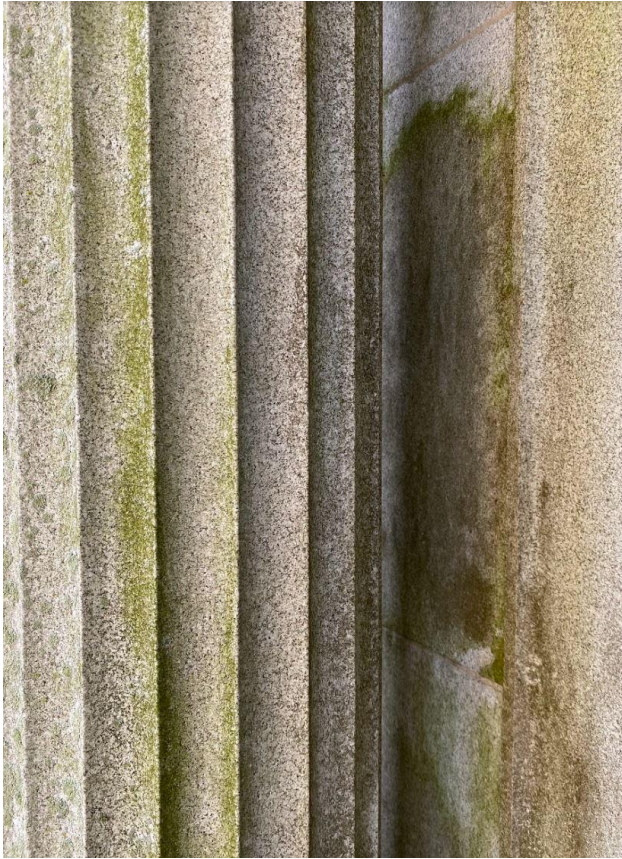


Figure 4. Biological Growth on Columns

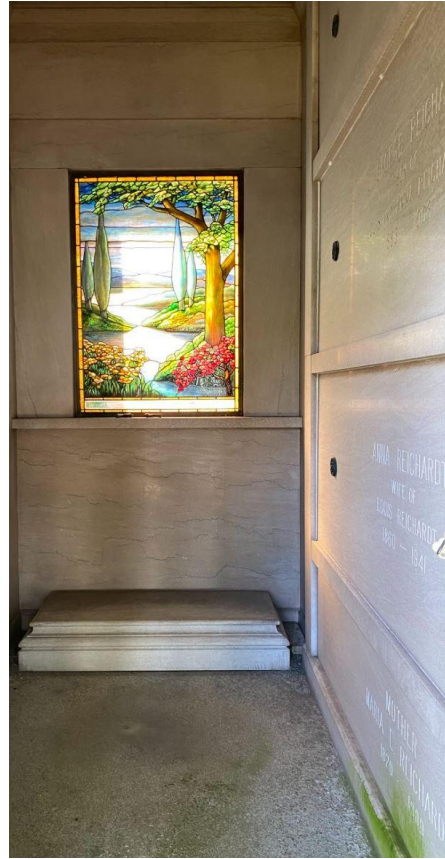


Figure 5. Interior Biological Growth



Figure 6. Water Markings on Northeast Facade

Bibliography

Farrington, Gould, & Hoaglund, Design #3343 Specifications, 1925, Box MM 14, Folder 90, Correspondence, specifications, notes and calculations, examination sheet, Avery Drawings and Archives Collections, Columbia University, New York.

Farrington, Gould, & Hoaglund, Record of Interments, 1925-1926, Box MM 14, Folder 90, Correspondence, specifications, notes and calculations, examination sheet, Avery Drawings and Archives Collections, Columbia University, New York.

Fifteenth Census of the United States. 1930 Population, 1930. Prepared by Ancestry Library in association with the National Archives and Records Administration. (accessed Oct 11:26:00 EST 2021).

Harris, Cyril M., ed. *Illustrated Dictionary of Historic Architecture*. Toronto: Dover Publications, 1983

"Hospital Gets \$50,000 from Reielnirdt Estate: Five Nephews and Four Nieces to Share Remainder." *New York Herald Tribune (1926-1962)*, Mar 22, 1941.
<http://ezproxy.cul.columbia.edu/login?url=https://www.proquest.com/historical-newspaper/s/hospital-gels-50-000-reielnirdt-estate/docview/1324059145/se-2?accountid=10226>.

List or Manifest of Alien Passengers for the United, 1907. Prepared by Ancestry Library in association with the National Archives and Records Administration. (accessed Nov 1:28:00 EST 2021).

Thirteenth Census of the United States. 1910 Population, 1910. Prepared by Ancestry Library in association with the National Archives and Records Administration. (accessed Oct 10:34:00 EST 2021).

U.S. Passport Applications for Louis Reichardt. National Archives and Records Administration (NARA);
 Washington D.C.; Roll #: 1543; Volume #: *Roll 1543 - Certificates: 10126-10499, 28 Mar 1921-29 Mar 1921*

Willow & Stone. Willow and Stone. Last modified March 9, 2017.
<https://www.willowandstone.co.uk/blog/a-brief-history-of-the-door-knocker/>.