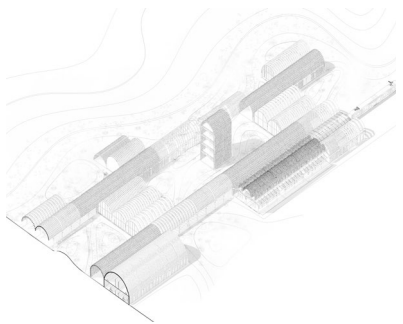


01 DESIGN PROJECT

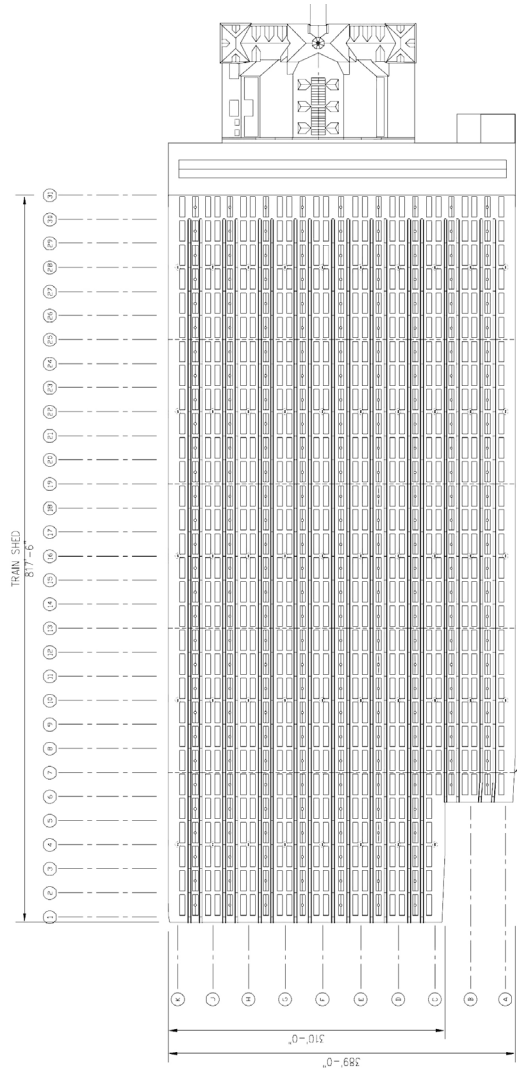
Location: New Jersey
Project type: Culture Center
Time Line: Feb-May 2024



WILL RECREATE WILD

Due to the severe local ecological environment and the need for the protection of endangered birds, this is a culture center aims to raise people's awareness of bird protection.

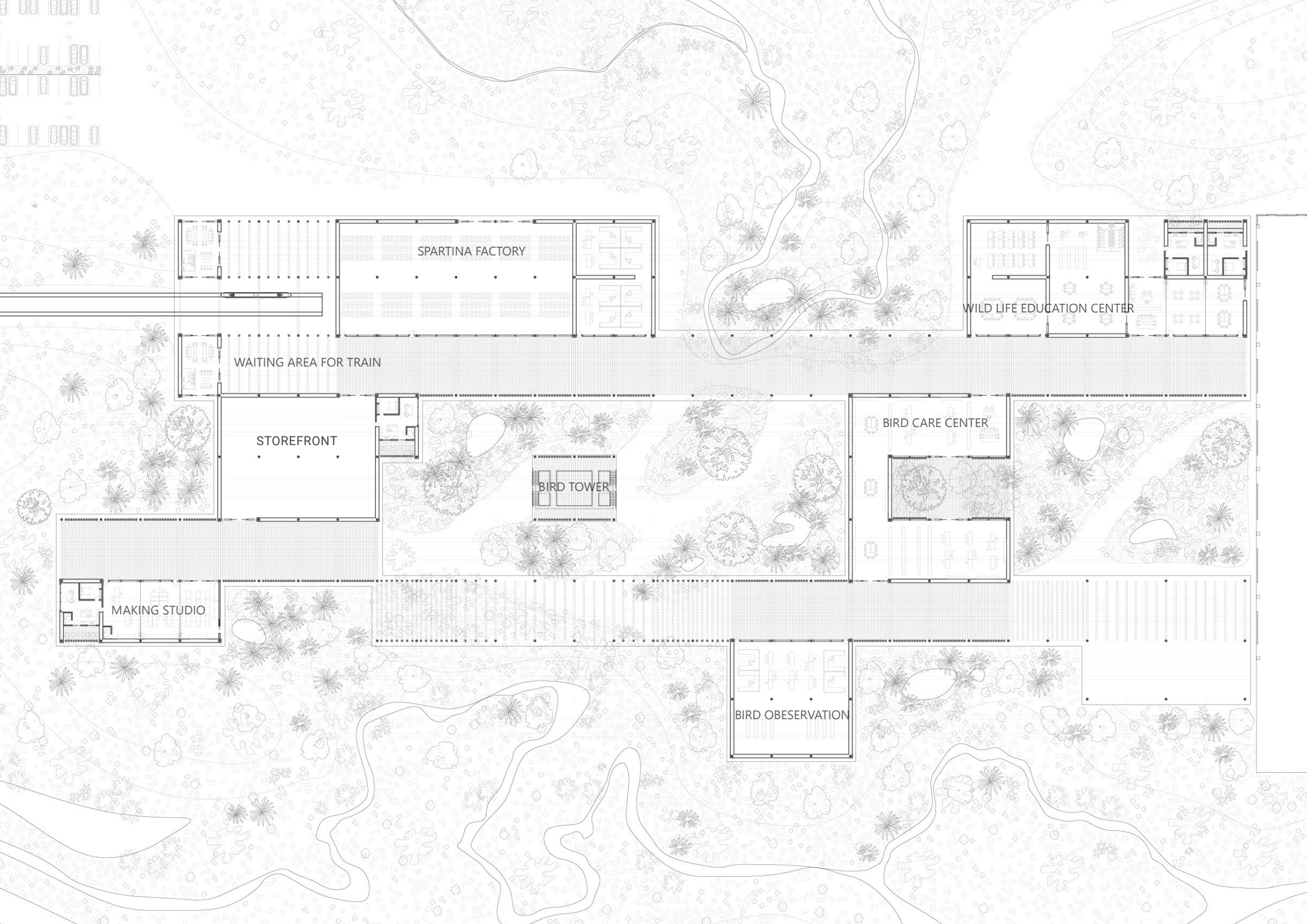




Original train shed plan
only some structure retained



On the left is the current state of the station, with weeds and phragmatics as the main feature. On the right is the spartina plant, which uses the original structure and track height difference to collect water and cultivate spartina



SPARTINA FACTORY

WILD LIFE EDUCATION CENTER

WAITING AREA FOR TRAIN

STOREFRONT

BIRD TOWER

BIRD CARE CENTER

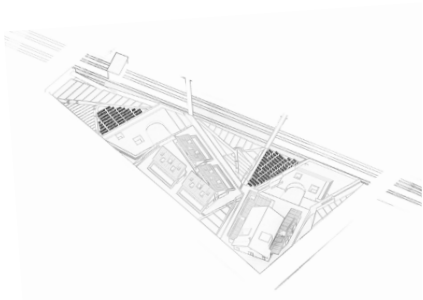
MAKING STUDIO

BIRD OBSERVATION



02 DESIGN PROJECT

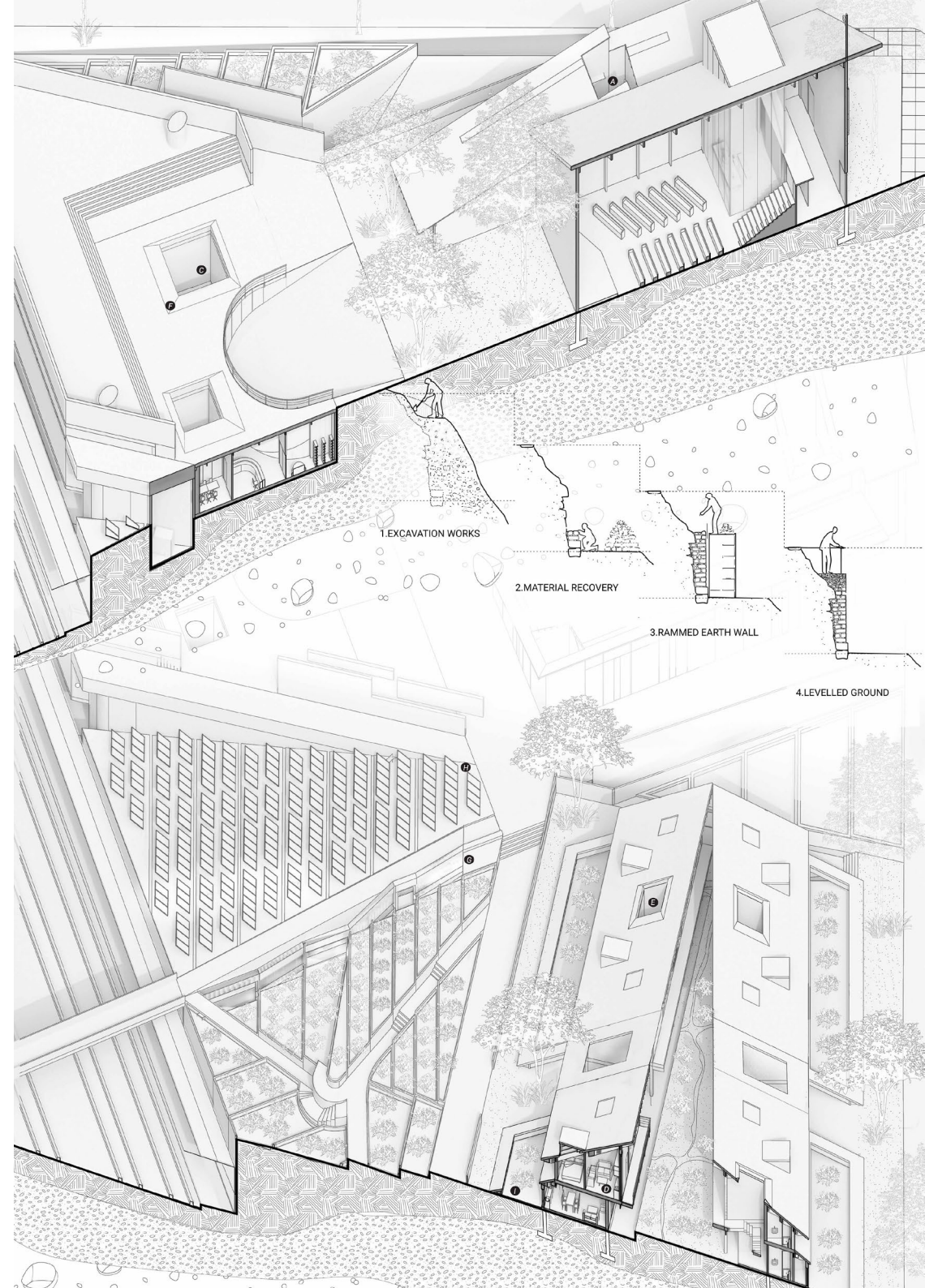
Location: Sunset Park, New York
Project type: Urban design/ Farm
Time Line: Sept-Dec 2024



FARMING FRAGMENTED

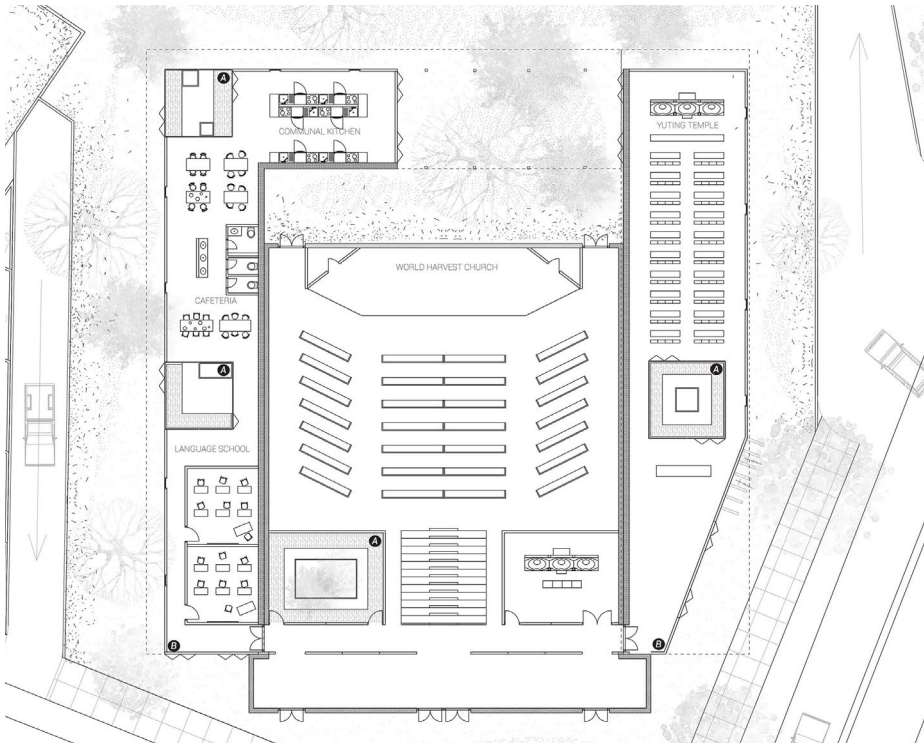
Calls for new agro-ecological imaginaries that empower distinctive forms of food growing to thrive in heavily fragmented territories. Our vision positions agroecological practices—and the family farmers implementing them—as pivotal actors in managing and transforming fragmented land-use.





The inactive church remains a focal structure, with temple programs surrounding and integrating into its interior. Residential blocks are designed as two-level units: ground floors cater to families, while second floors accommodate couples. The education and composting centers are located underground to optimize space usage and minimize visual disruption.

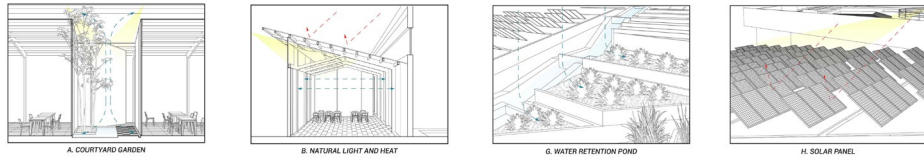
WORLD HARVEST CHURCH & YUTING CHURCH



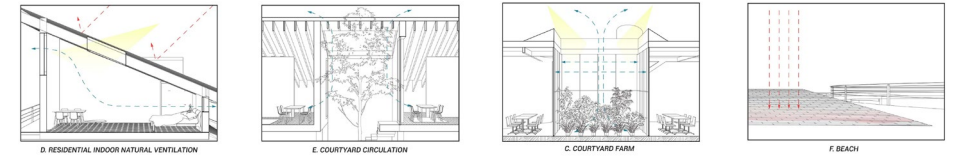
FAMILY FARMERS RESIDENTIAL BLOCKS



Water elements and plants are integrated to create a microclimate. Also, water retention ponds along the fragmented farm's slope, improving water distribution efficiency



Slanted roofs with openings, and pitched CLT wood structure not only allows natural ventilation and light. Wood material also absorb the energy to keep the place warm



0100m Residential Block - Bed
 0200m Resident Center - Learn about Urban Cultivation
 0300m Residential Courtyard - Culture Park
 0400m Farming - Asian Vegetables
 0500m Market - Cooking and Dining
 0600m Market - Market Event
 0700m Church & Temple - Chapel
 0800m Transport Food Waste
 0900m Farming

03 DESIGN PROJECT

Location: Bronx, New York
Project type: Layered Urbanism
Time Line: Feb-April 2025

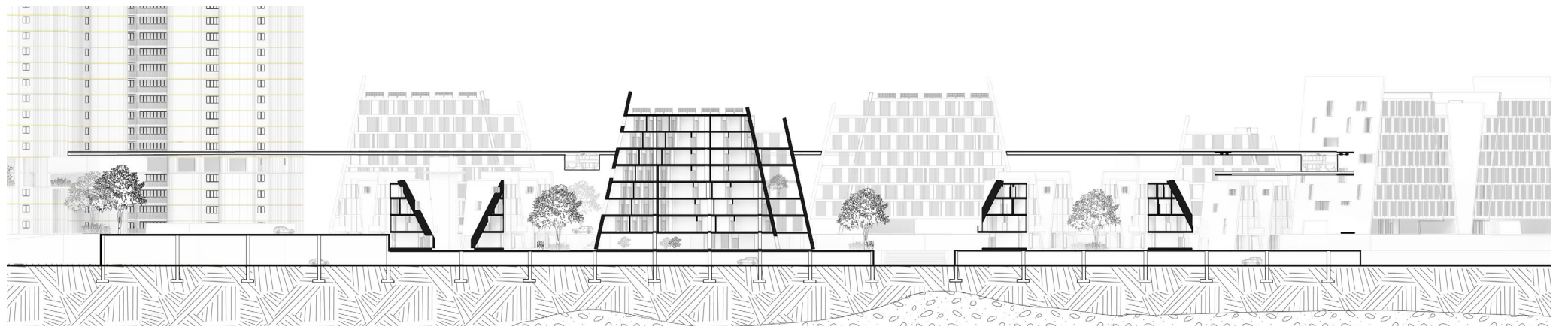
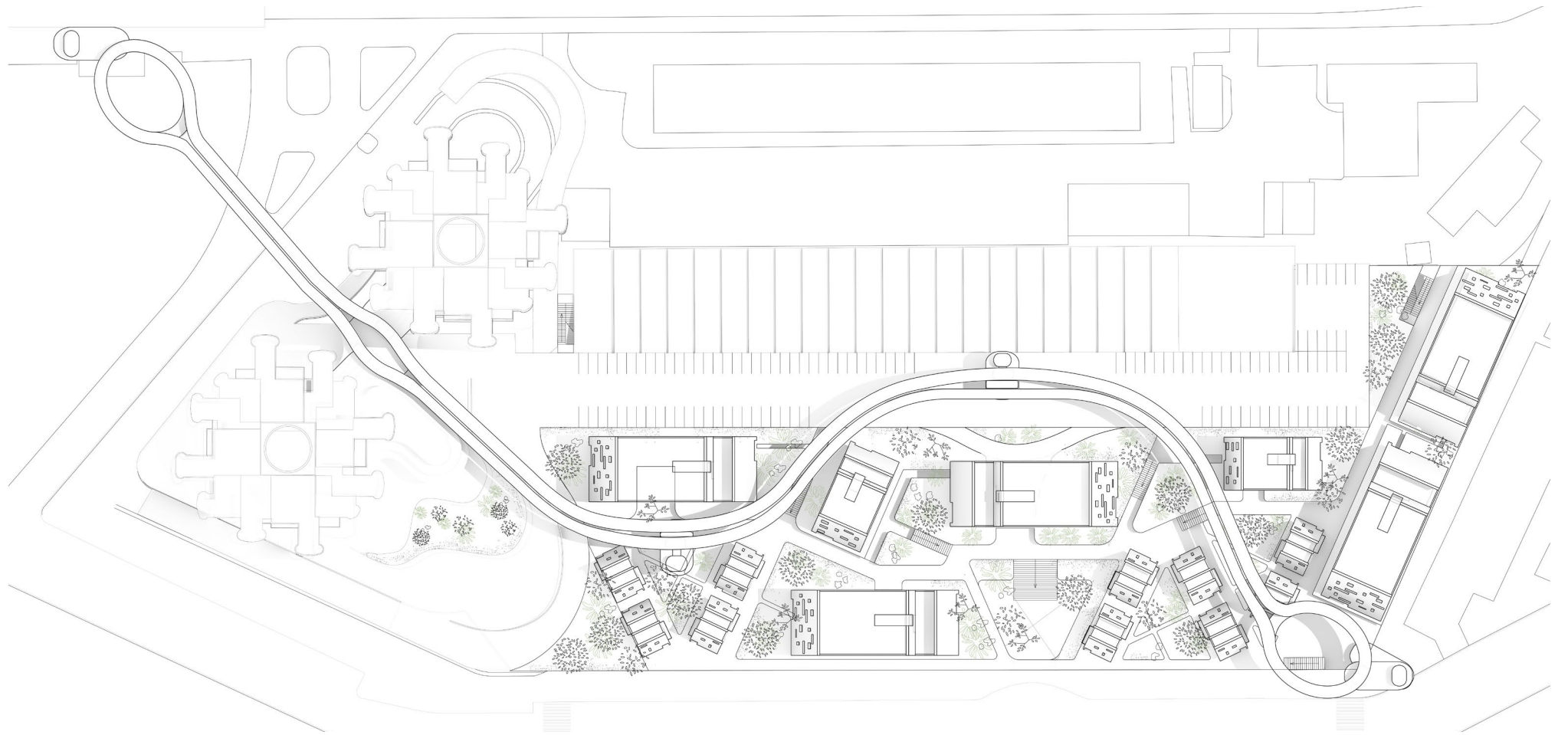


TRACEY PLINTH HOUSING

"Reviving the Unbuilt Ground of Tracey Towers"

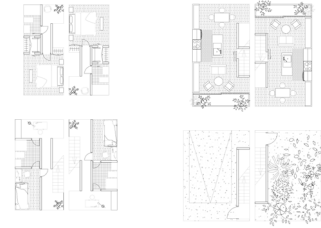
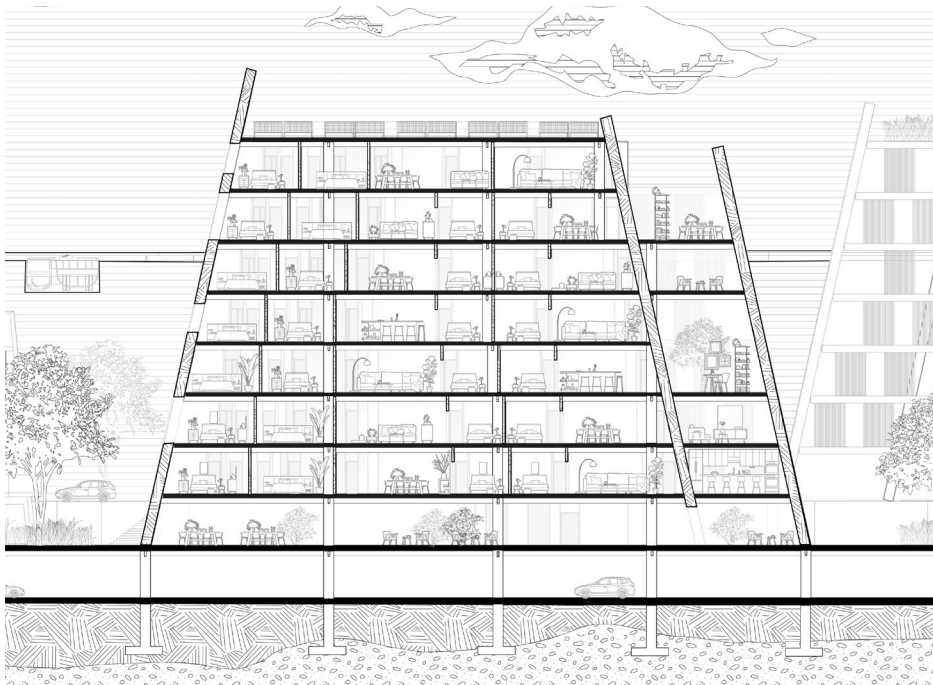
Our project returns to the plinth not as a blank base, but as a site of architectural memory and urban potential. We propose a new interpretation of the original townhouse concept, one that responds to today's Bronx: a borough shaped by resilience, intergenerational living, and shifting housing needs. In reviving Rudolph's unbuilt vision, the project becomes both a continuation and a critique, a dialogue between past ambitions and present conditions.



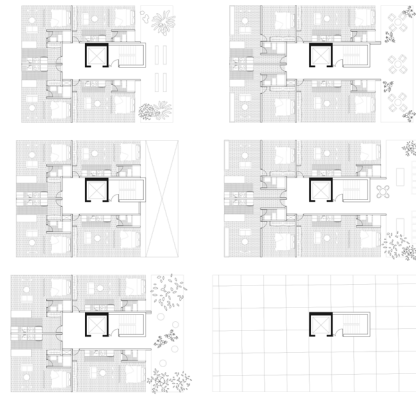




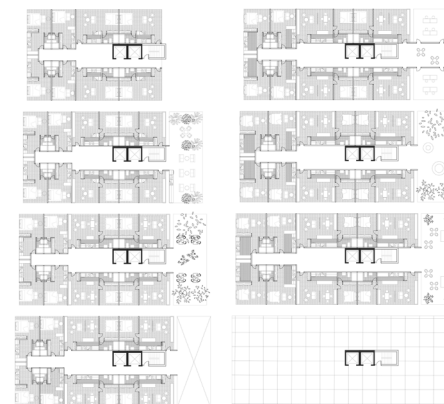
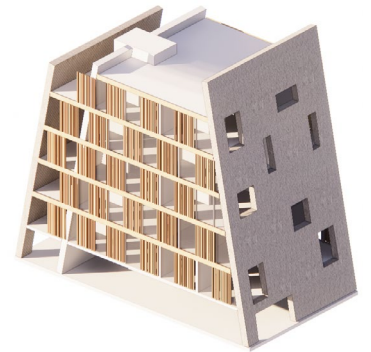
Staggered staircases planted with flowers offer resting spots, while the open ground level serves as a garden or parking. The first floor contains living and dining areas with a balcony, and upper floors hold bedrooms and home offices.



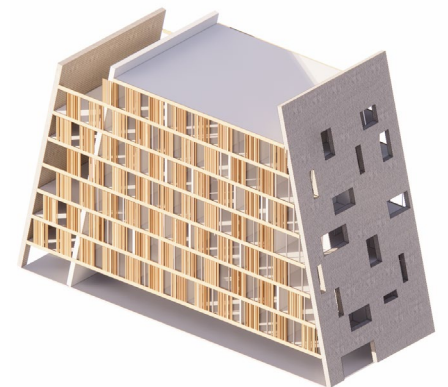
CONDO

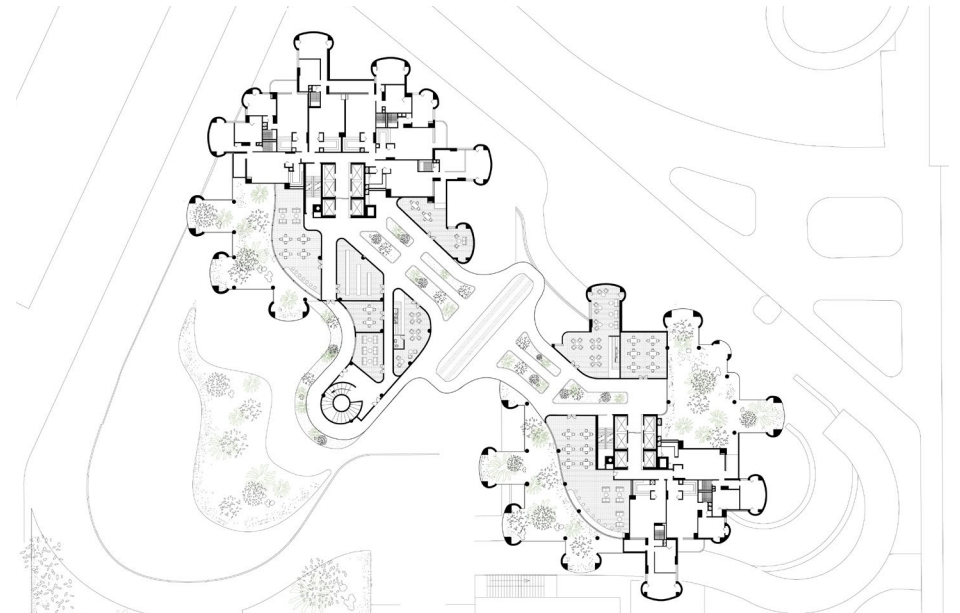


1B1B: 4
STUDIO: 16



1B1B: 24
STUDIO: 32





These towers primarily contain studio and one-bedroom units, catering to singles and couples. The ground floors remain open, while the split lab separates residential space from integrated community programs, such as laundry, co-working spaces, a daycare center, and rooftop gardens.

An elevated platform with a tram station links the towers, adding community spaces like a library, classrooms, and rooftop gardens, with separate elevators for public and private access.

04 DESIGN PROJECT

Location: Harlem, New York

Project type: Housing

Time Line: Sept-Dec 2023



HOUSING AS THEATER

Housing as theater, Life as performance.
Extract fundamental theatrical experience
and implement them into housing as a
mean to explore a new co-living experience.



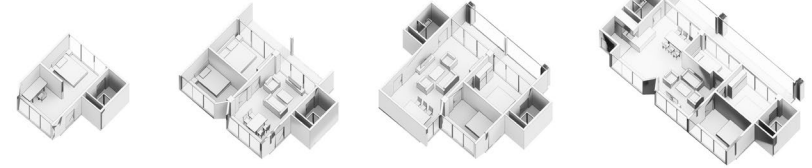


1B1B
323 ft²

2B1B
583.9 ft²

2B2B
718.7 ft²

3B2B
959.6 ft²



1B1B
323 ft²

2B1B
583.9 ft²

2B2B
718.7 ft²

3B2B
959.6 ft²



Lying on the bay window in the bedroom, you can see people talking and eating across the stairs.

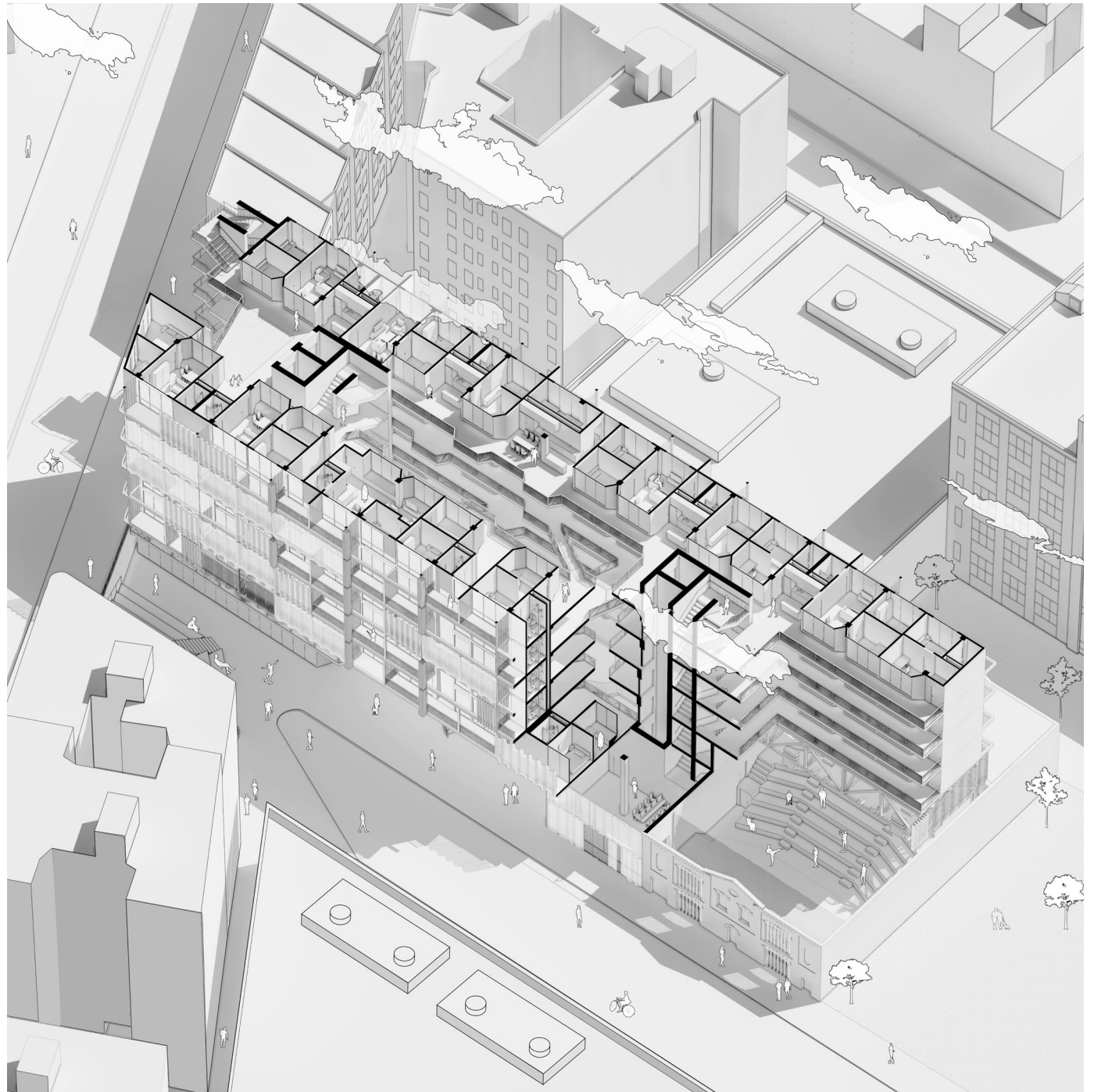
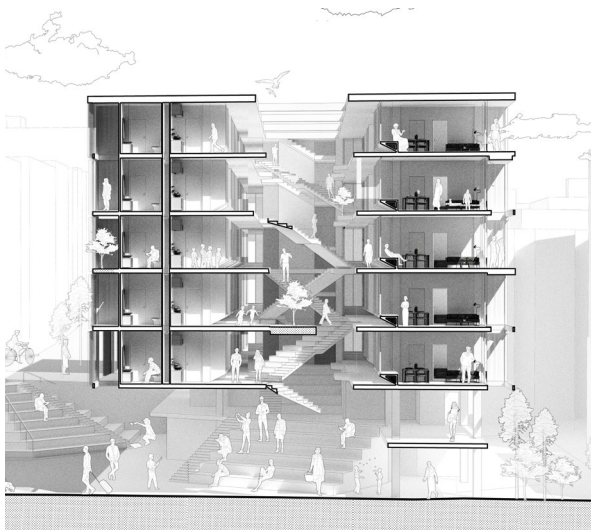


The staggered staircases are planted with various flowers, provide a space for people to rest in their spare time, and become a theater in the eyes of people on both sides of the stairs.

Housing itself is already theatrical.

Performance activities are not concerts and actual theater plays. Pedestrians walking along the hallway, the sound and smell of resident's cooking, the voice from your neighbor's arguing and laughing, these are all elements that sort of compose a large play with the space of living as a backdrop, and all the diverse daily activities will be perceived as performances, viewed by the community collectively.

As our title says, HOUSING AS THEATER, LIFE AS PERFORMANCE

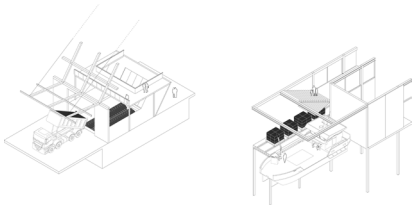


05 TECH PROJECT

Location: Mahatten, New York

Project type: Factory

Time Line: Sept-Dec 2023



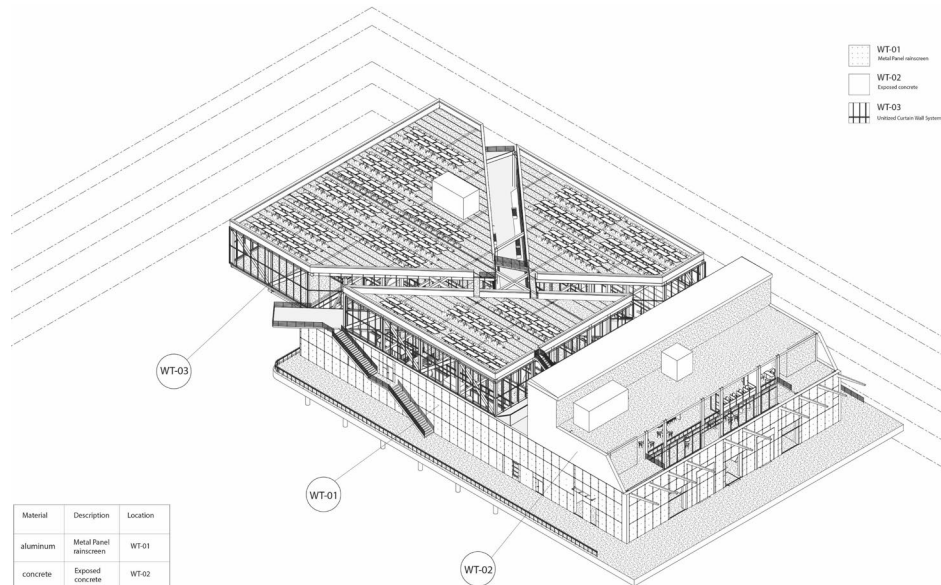
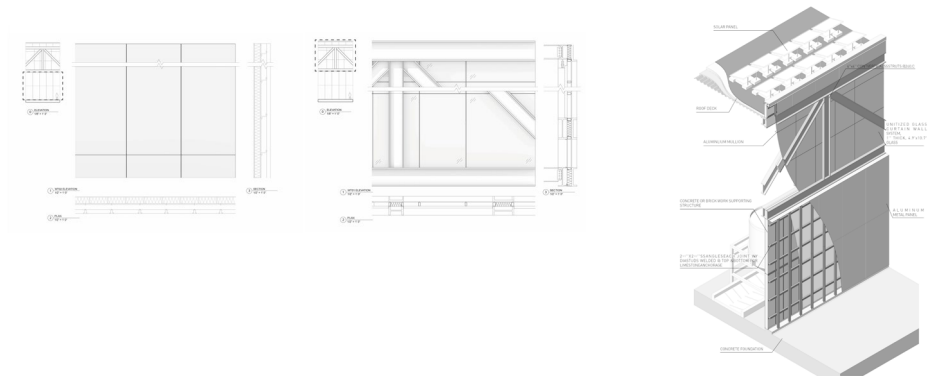
PIER 0

A material construction waste recycling plant with the primary aim of repurposing construction debris and reintegrating them into the construction market.

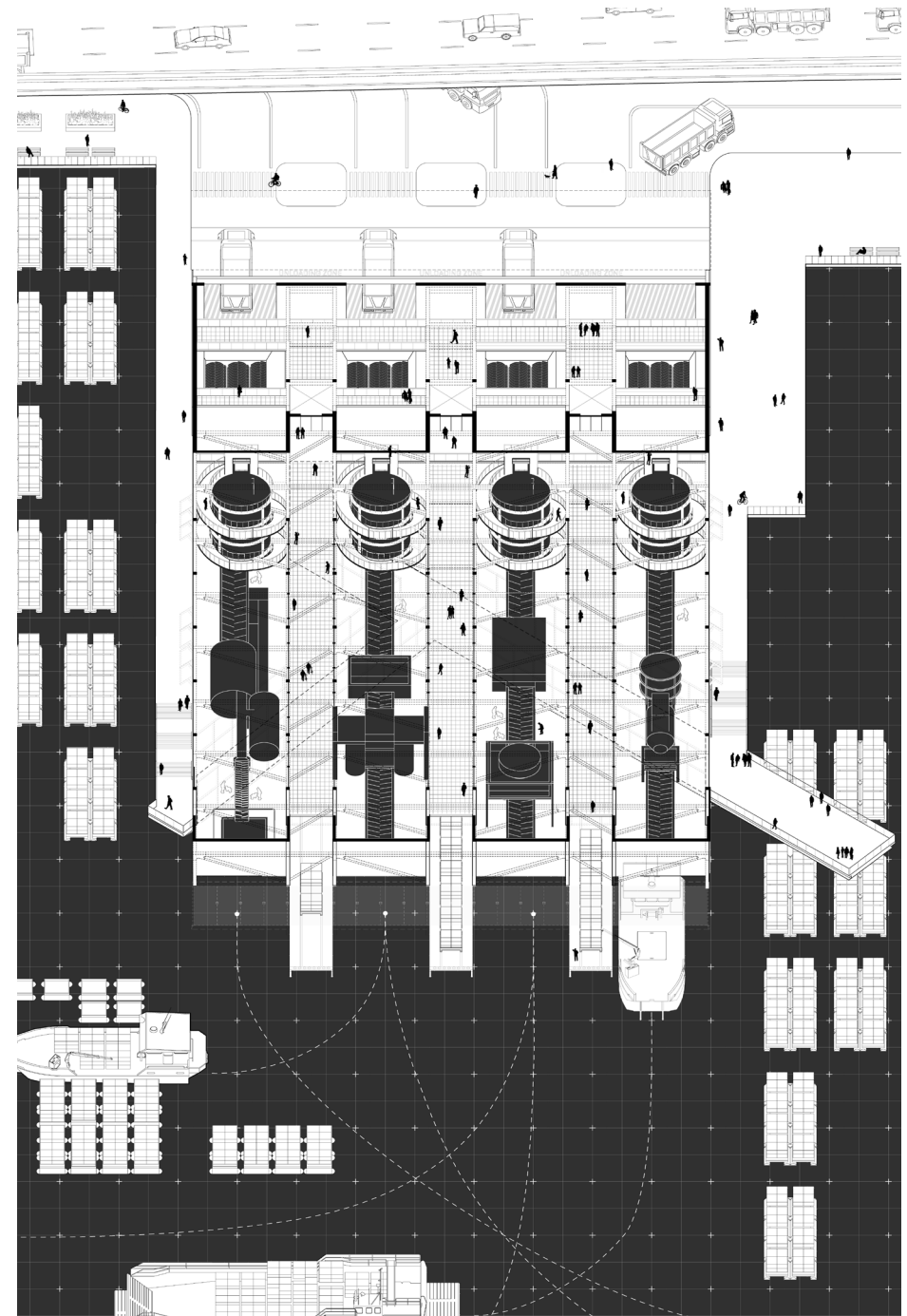


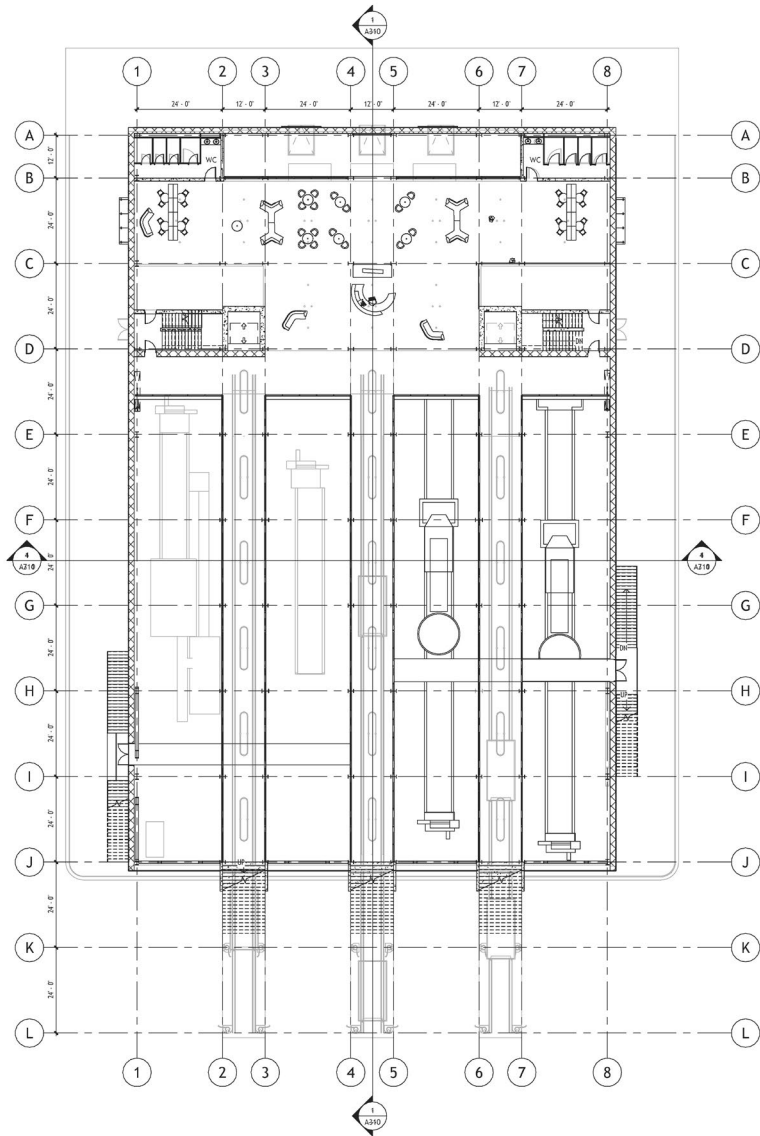
Design Statement

Pier 0 is located at the end of Maiden Lane, adjacent to pier 15. It has been conceived as a material construction waste recycling plant with the primary aim of repurposing construction debris and reintegrating them into the construction market. This project also has a dual mission: to raise public awareness about the concerning issue of unused materials after construction and demolition in a time of escalating consumption rates.



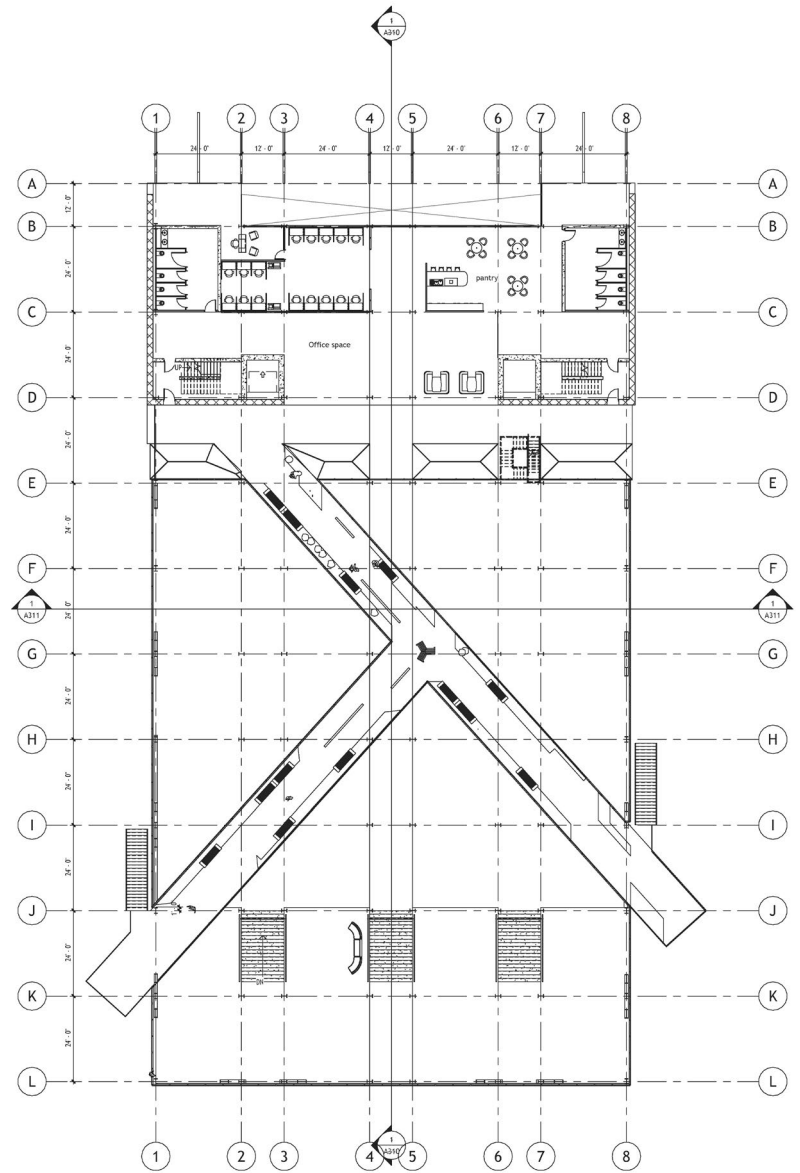
Material	Description	Location
aluminum	Metal Panel rainscreen	WT-01
concrete	Exposed concrete	WT-02
aluminum frame 6,400 g/m²	Utilized Curtain Wall System	WT-03





LV2 PLAN

the building's program encompasses an art exhibition area, a public indoor plaza, and a window that links the public to the recycling factory floor. Within the industrial program, materials are separated and sorted, aggregates are processed

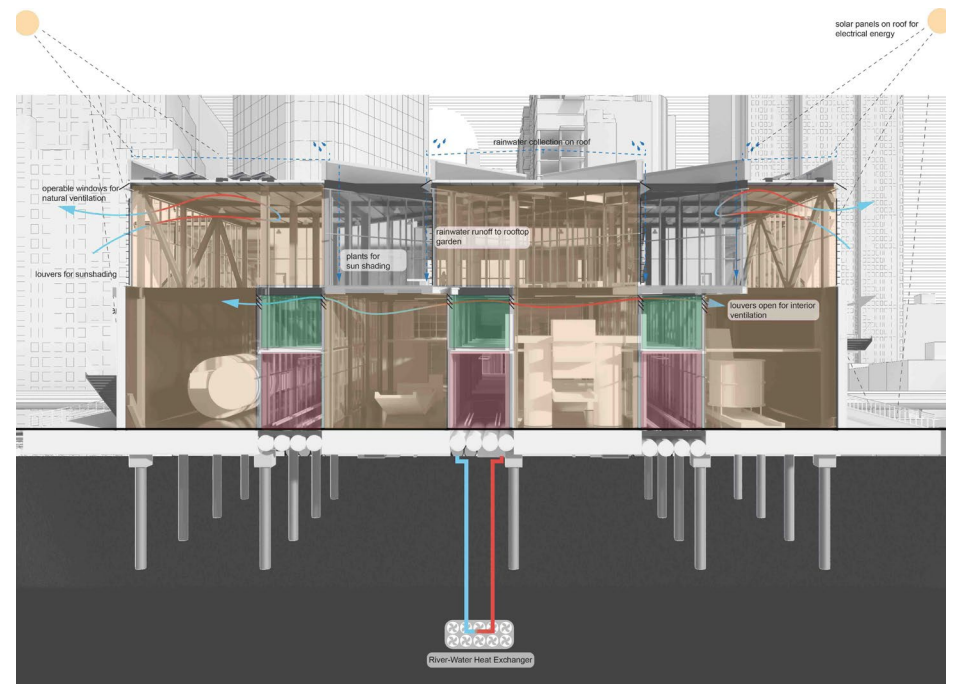
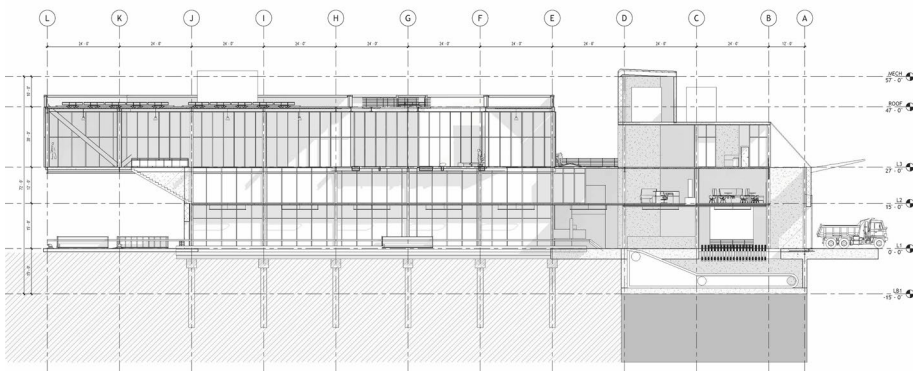
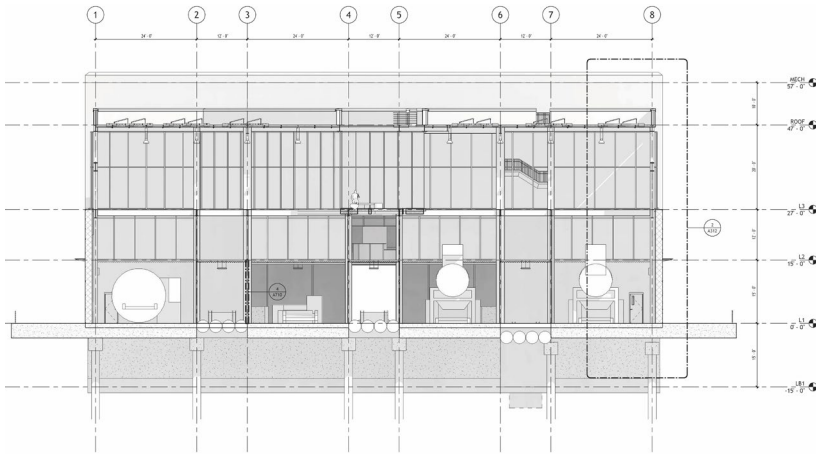


LV3 PLAN

servicing as a public exhibition and performance space that highlights the industrial character of the environment. The hanging corridors are lined with glazed walls, symbolizing transparency in the material's journey within the urban landscape.

Sustainability

Our design's sustainability features encompass various elements, such as cross ventilation for natural cooling using operable windows and louvers, passive solar shading to optimize sunlight, geothermal water heat pumps powered by rainwater collection, and pv panels installed on the roof. Furthermore, the building's very structure incorporates the recycling of construction waste, effectively counterbalancing its own carbon footprint.



CAT'S PLUG IN CITY

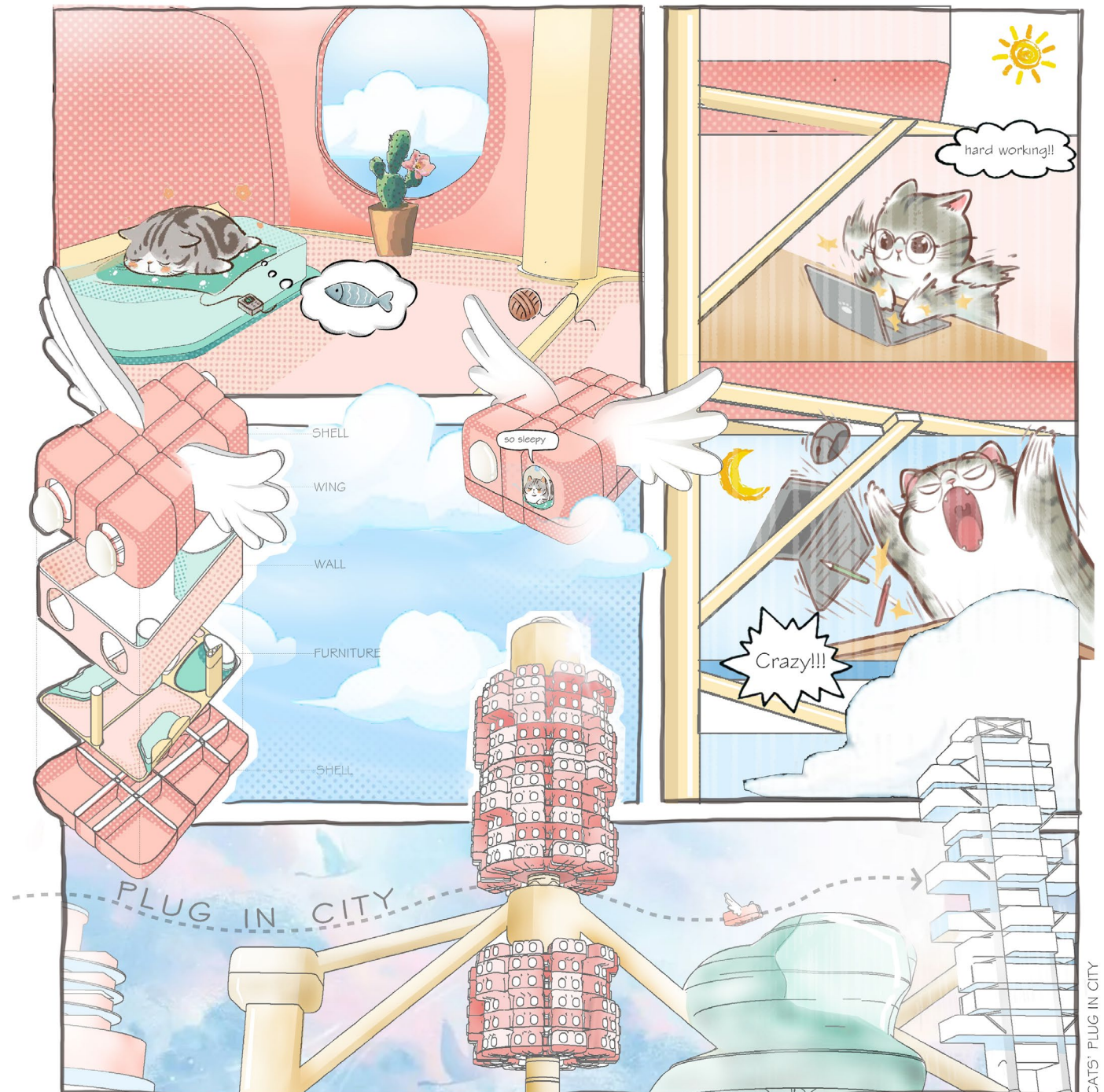
GSAPP, ADR course
Sept. 2022 - Dec 2022

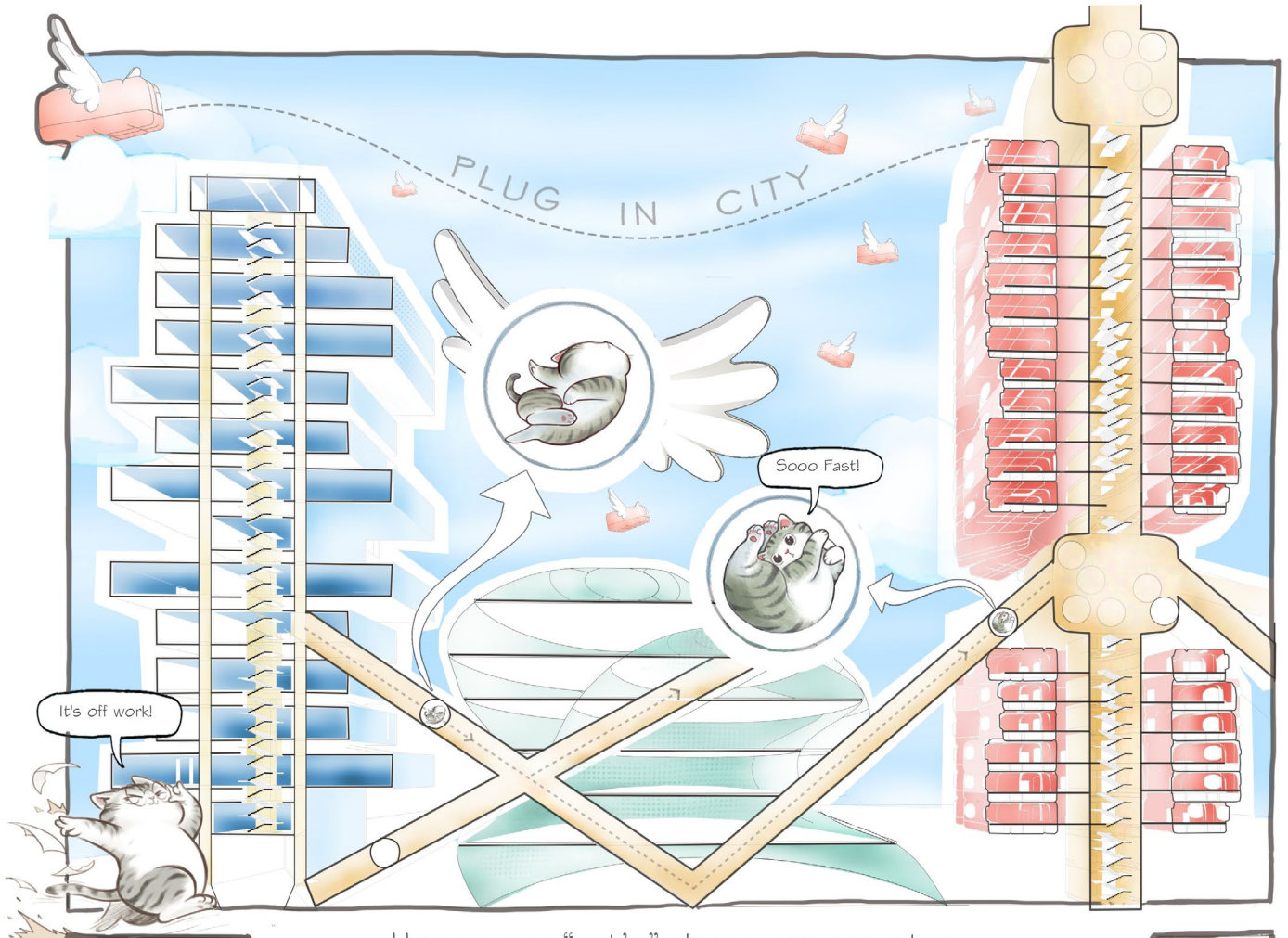
This is the ADR assignment for the first semester of the MArch Program at Columbia University, which is to research an existing architectural project or concept and express it in my own way. I chose the architectural concept of Plug in City, and since it is not a built building, I used a cat as the main character to tell the story of how to live in the city and how the city works.

The summary of the story is: The cat wakes up in its own plug-in dwelling unit, and the movable device has spread its wings to fly to the plug-in office. At the office the cat struggles to draw from day to night, and after work it can quickly reach the entertainment places through the transportation pipeline to play with its friends, and finally it returns home exhausted and falls asleep. The last picture of the cat sleeping peacefully at the owner's feet, found that this day's life is just a dream of the cat.

I used felt to make a model of the dwelling unit as a toy for the cat to explain the origin of the cat's dream.

Animation links: <https://youtu.be/OJtm5B48F7Y>





Hope every "cat's" dream can come ture~

