

GSAPP 2025

Feiyang Li

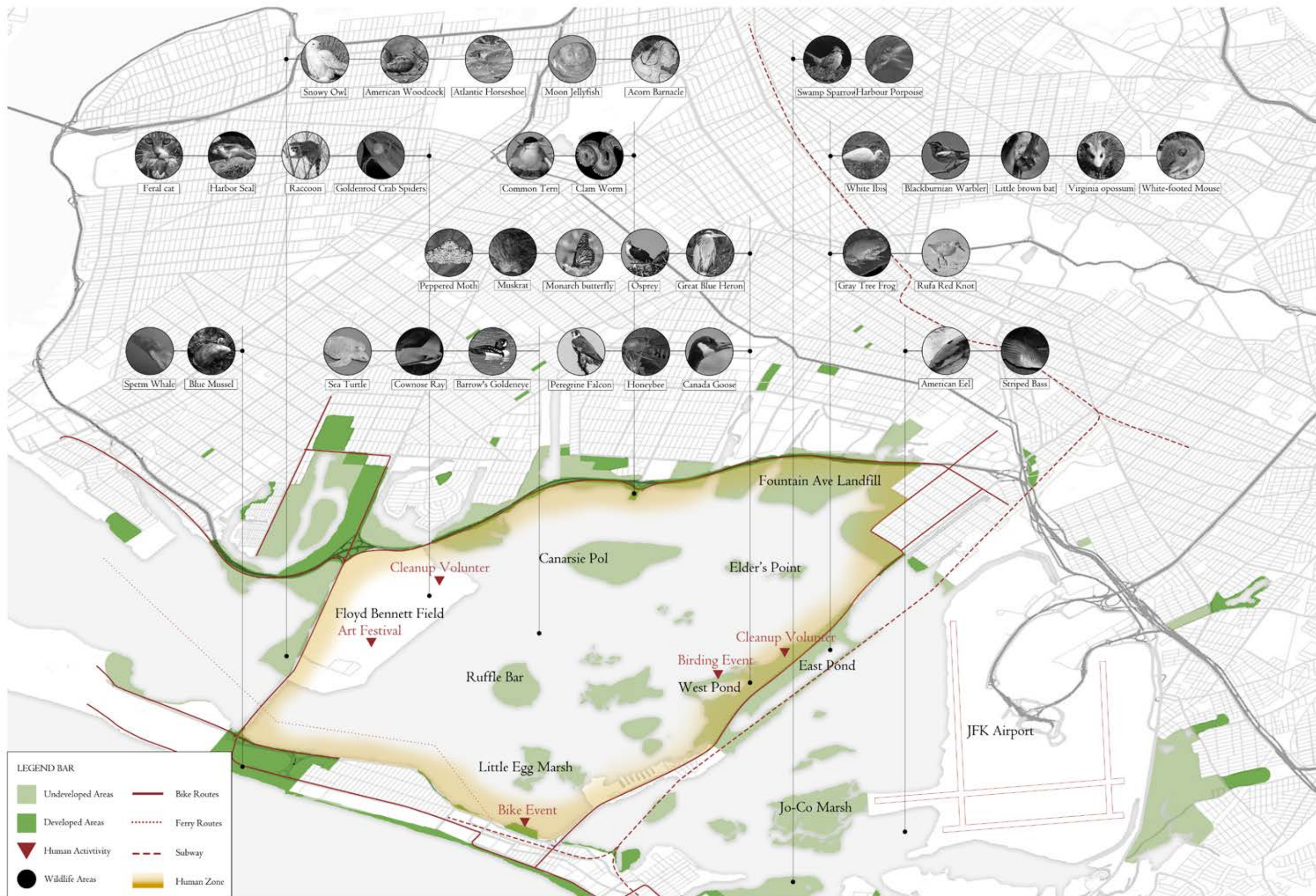
Rethink Jamaica Bay

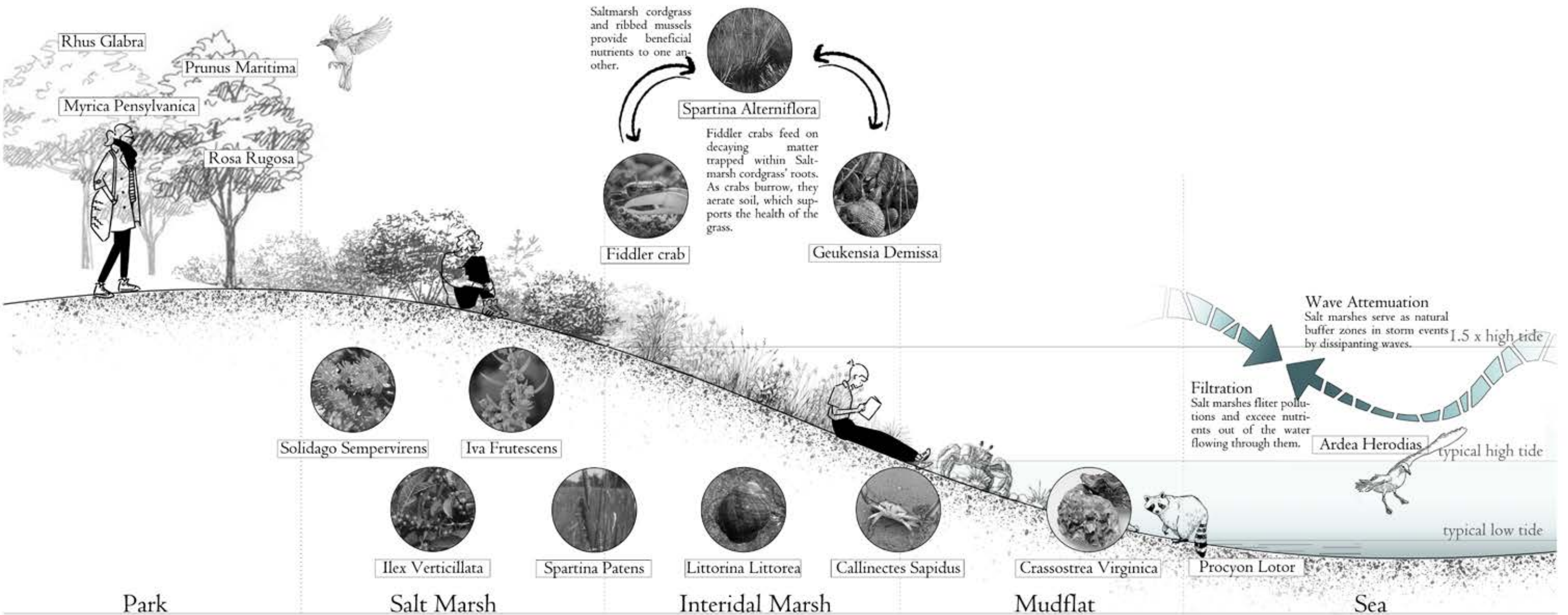
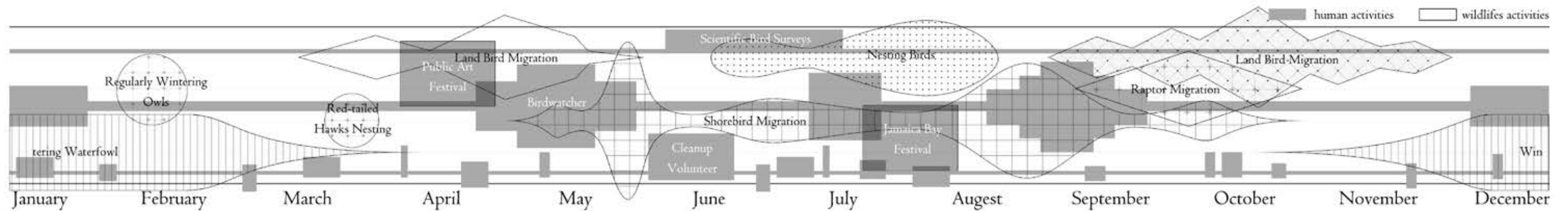
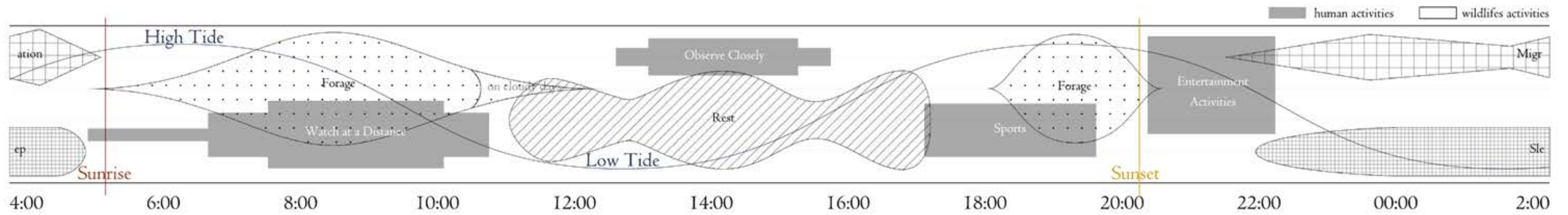
A Sanctuary for Nature

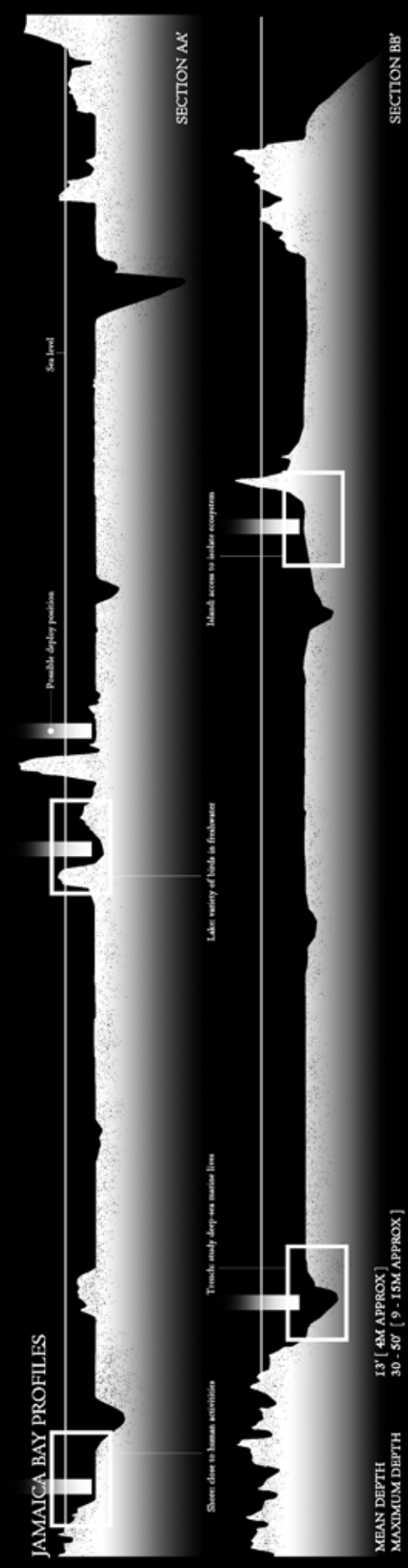
Jamaica Bay, a vibrant ecosystem teeming with diverse bird species and aquatic life, is set to become home to an innovative project that promises to revolutionize bird watching and environmental education. The Bird Tower & Pier project aims to create a unique space that caters to bird enthusiasts, scientists, researchers, and tourists alike, offering an immersive experience in the heart of this natural wonder.

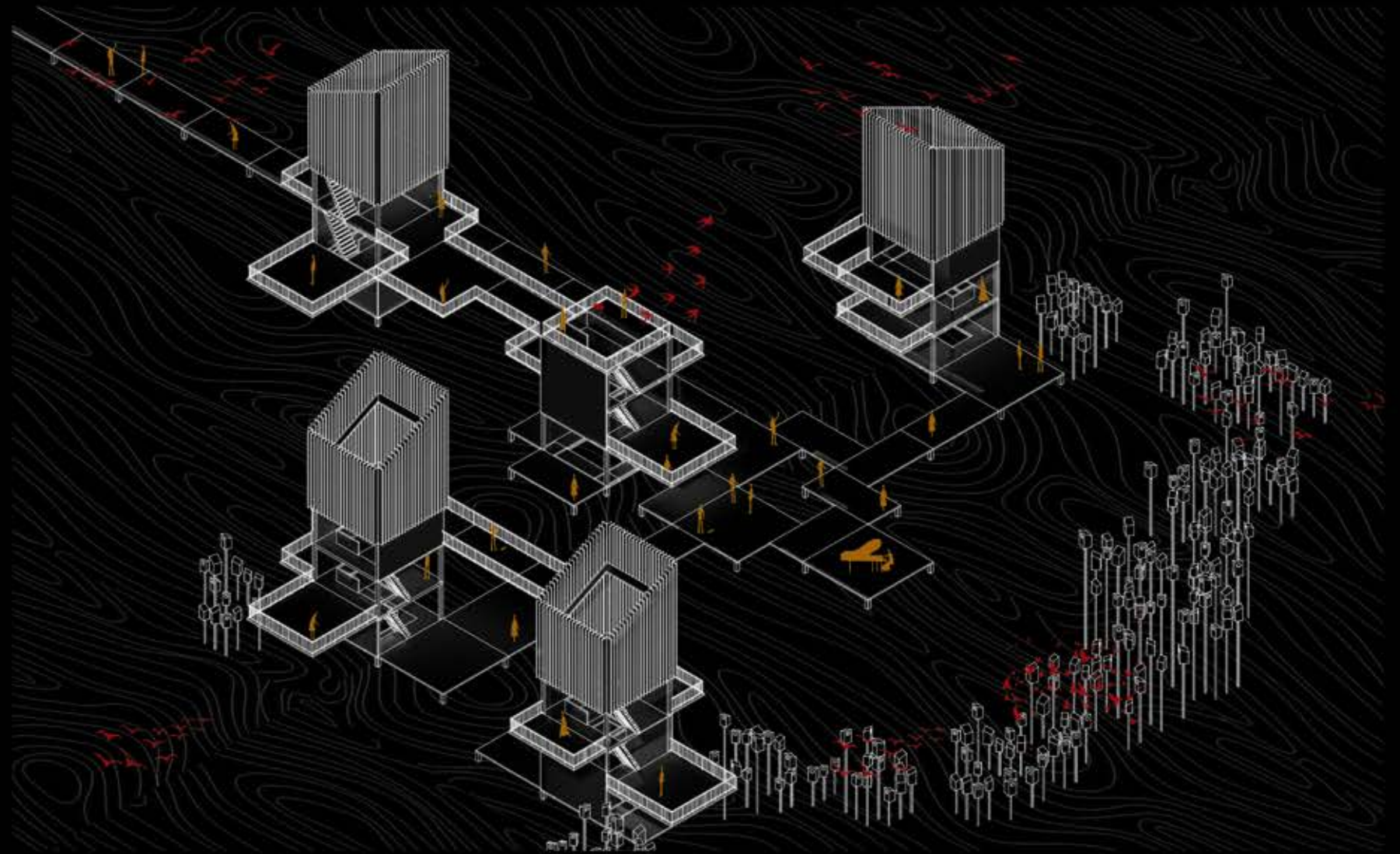
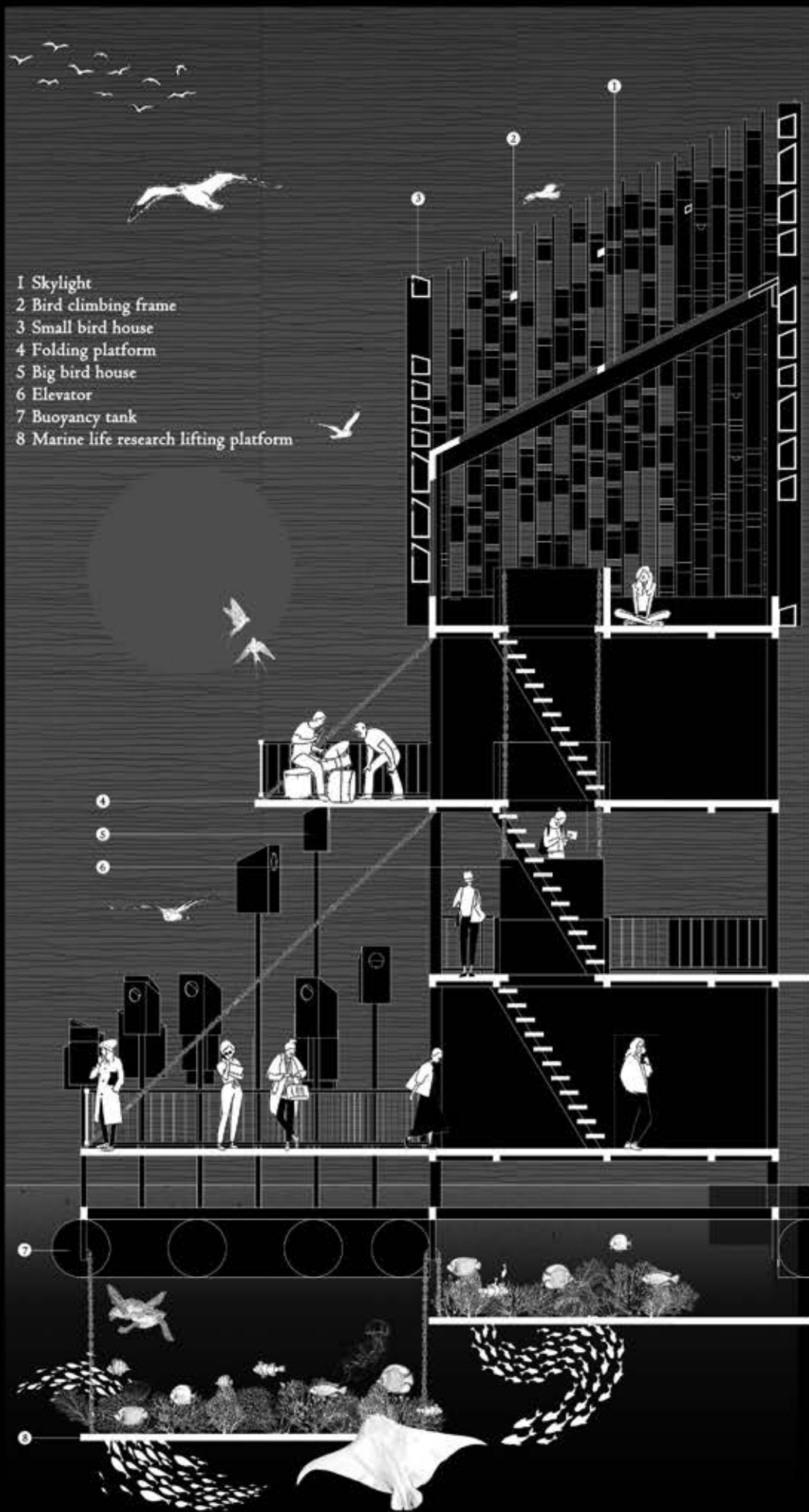
The project's primary objective is to raise awareness about Jamaica Bay's rich biodiversity, focusing on its avian inhabitants and their delicate ecosystem. By providing state-of-the-art facilities, the initiative seeks to educate visitors about various bird species and aquatic life while fostering a sense of stewardship towards the bay's preservation.



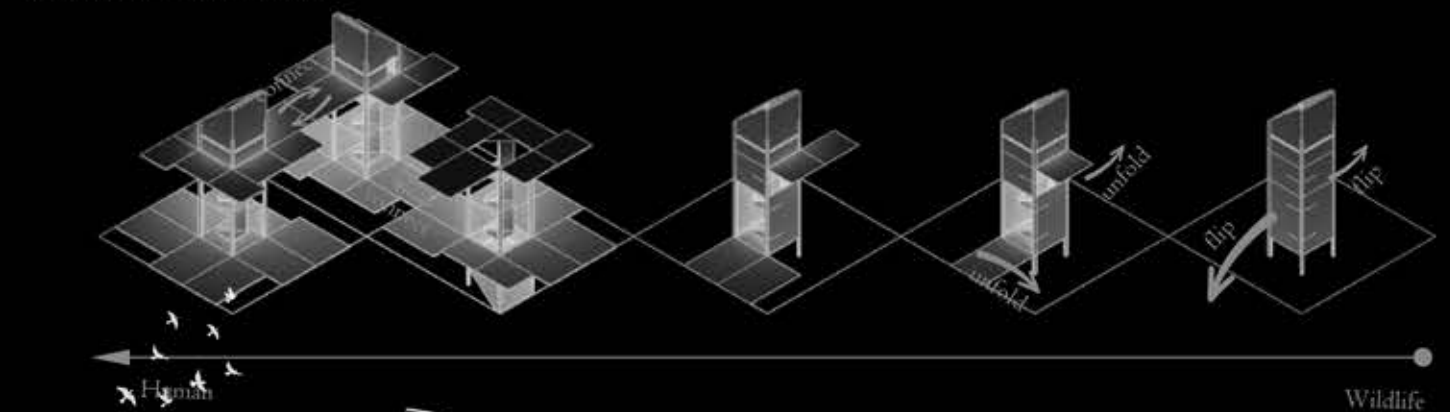




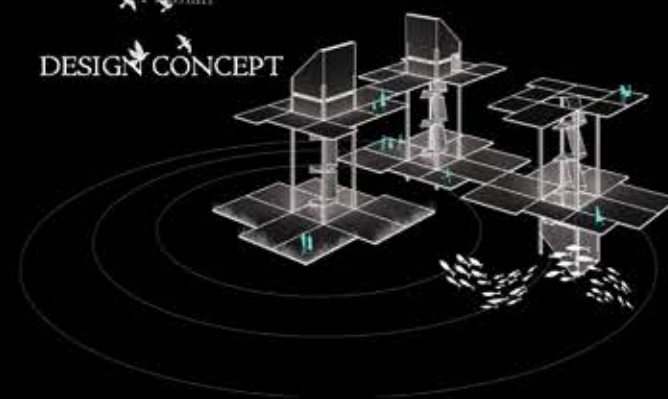




UNFOLDING PROCESS



DESIGN CONCEPT



CONNECT DIAGRAM



Sand Script

A Video of Tuvalu

From the fragments of coral, sand begins to drift.

Shaped by tides and wind, it gathers, reshapes, and recedes.

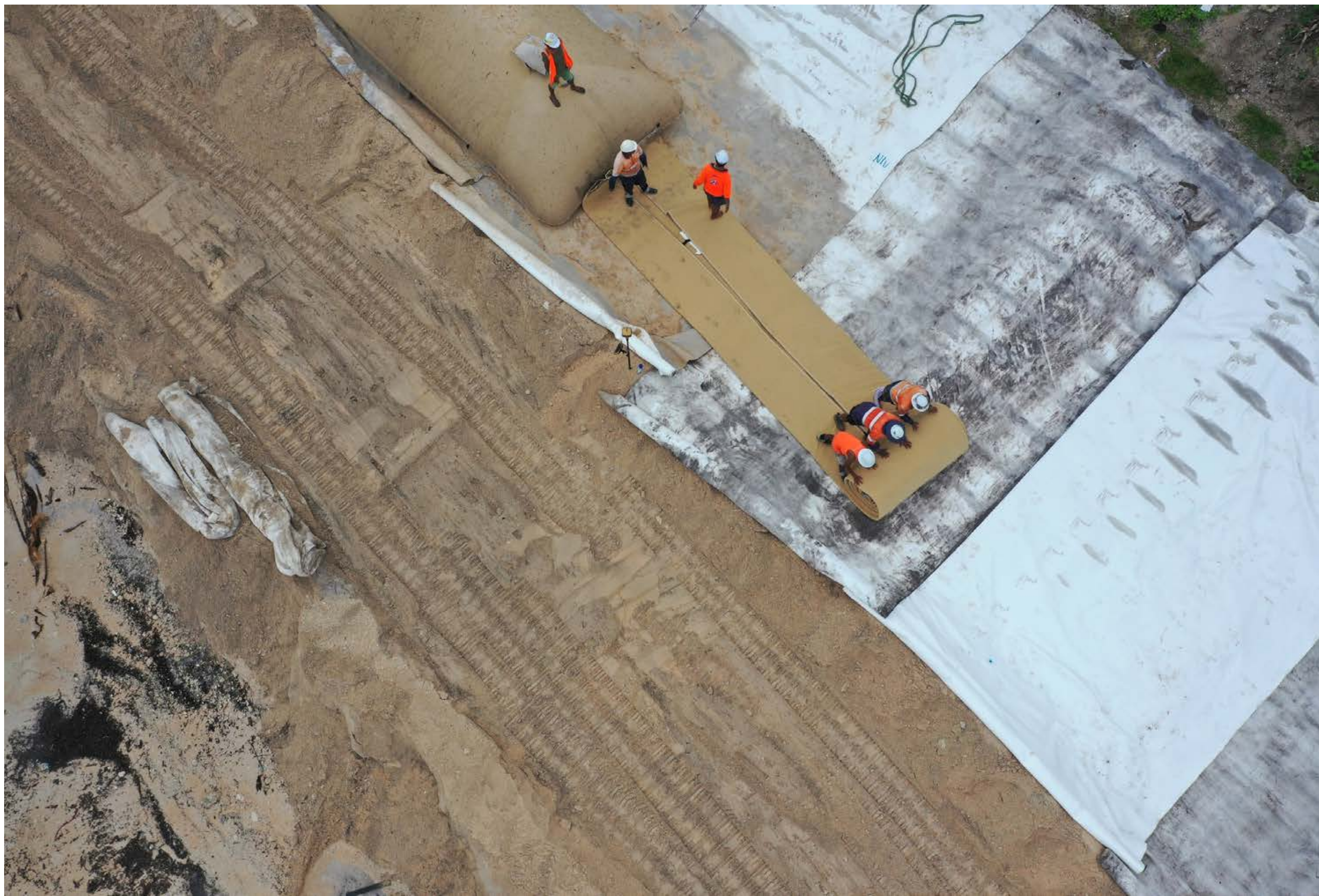
It feeds Tuvalu's construction, blurs coastlines, and marks the fragile line between erosion and endurance.

Sand is never still — it migrates, slips through fingers, moves through policy and project alike.

And carried within its flow are other materials — traces of contemporary construct, of consumption —

as sand makes way for waste, woven into the same shifting currents.





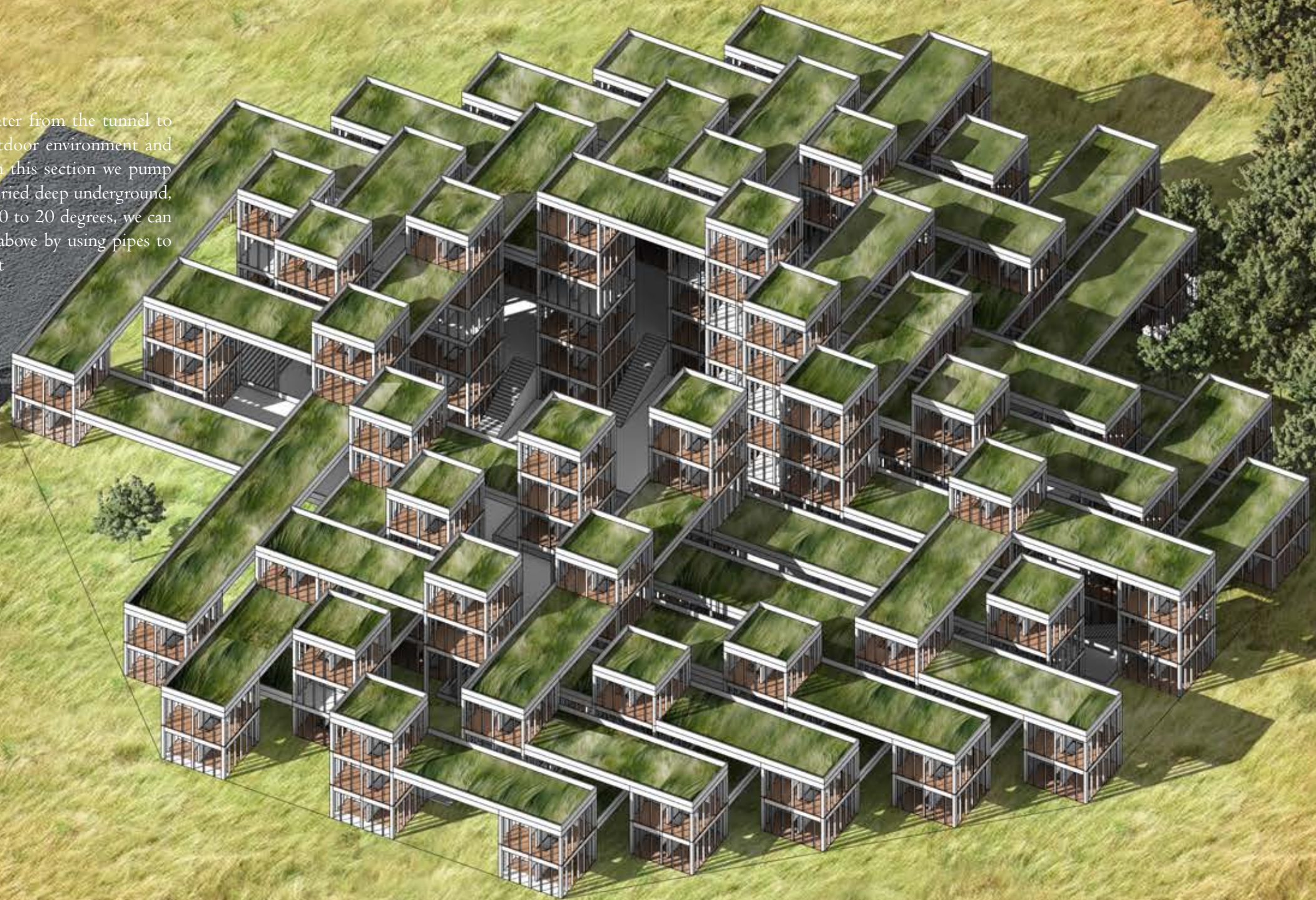


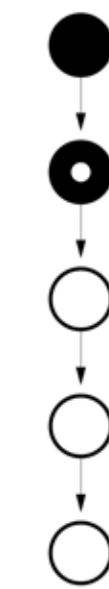
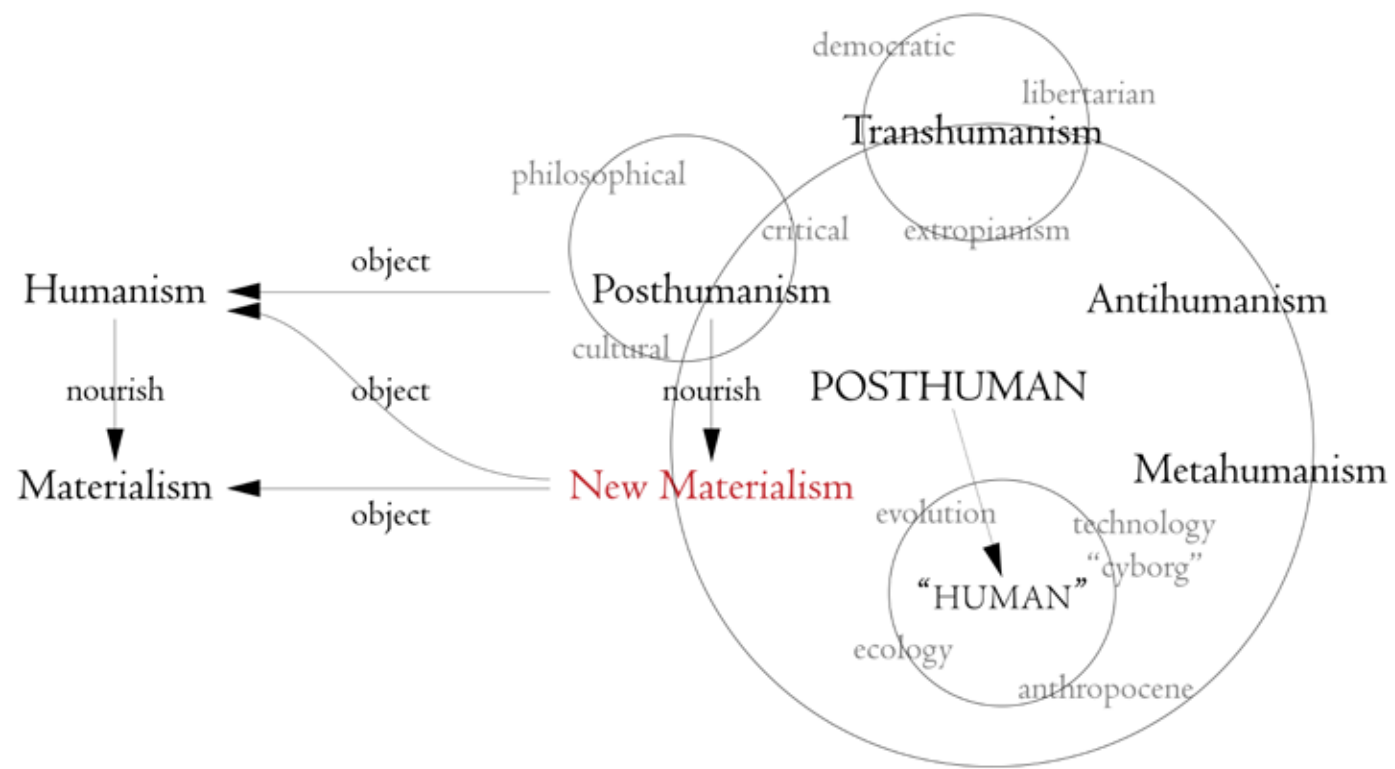


Waxahachie Dream

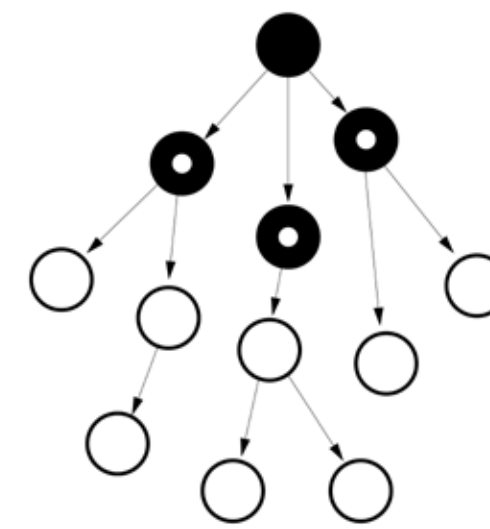
A Shelter on SSC

The main idea of the project is using the water from the tunnel to cool the community, create a comfortable outdoor environment and attract people to change their behaviors. From this section we pump the underground water out, and because it is buried deep underground, the temperature of the water is very stable in 10 to 20 degrees, we can use this free energy to adjust the temperature above by using pipes to transfer it. and then, the valley shape will keep it

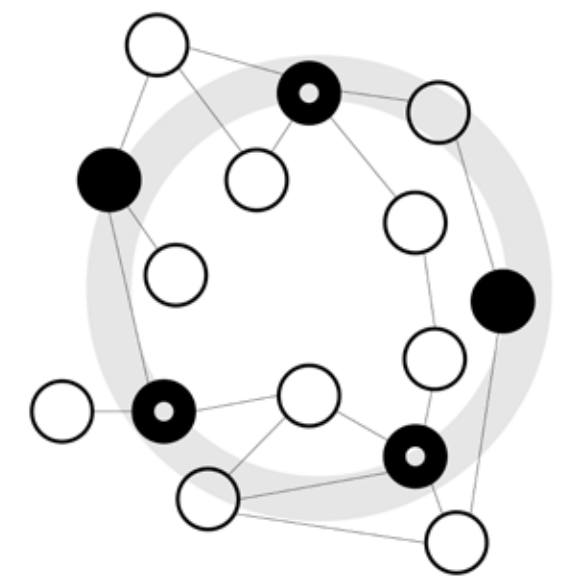




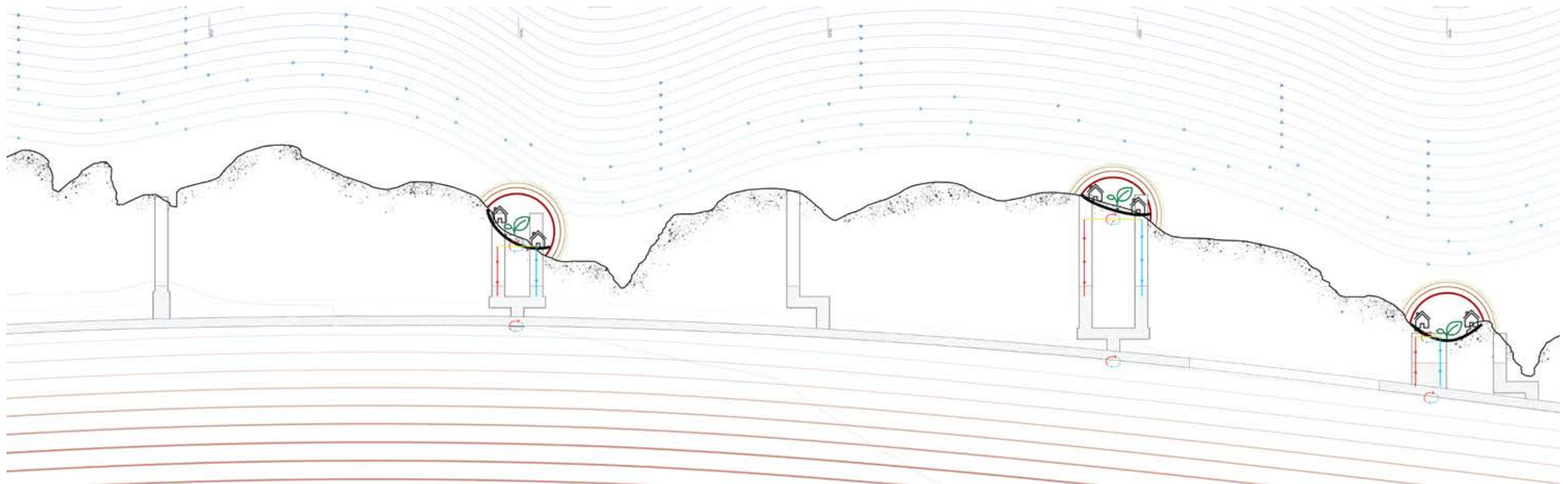
Linear

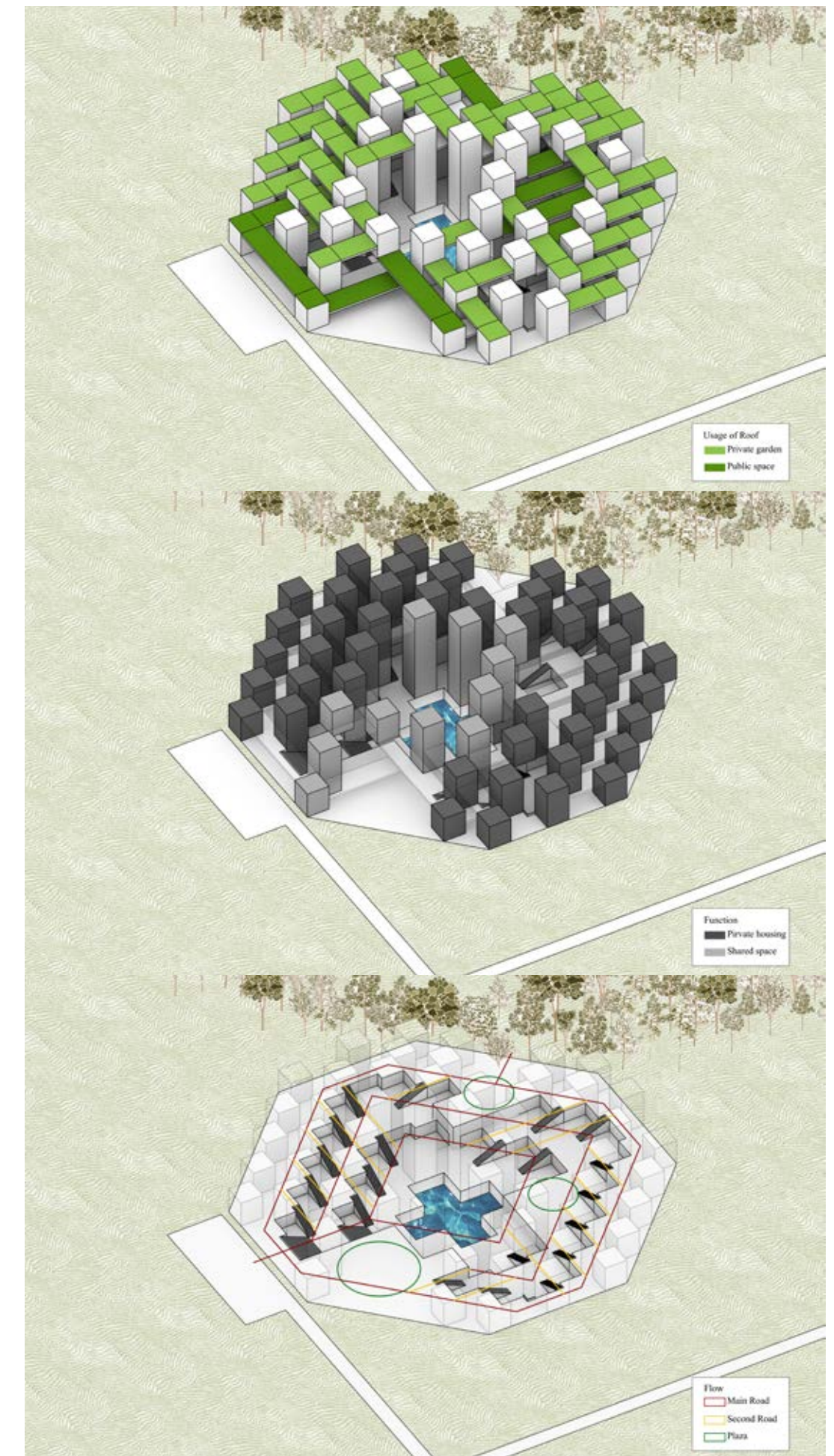
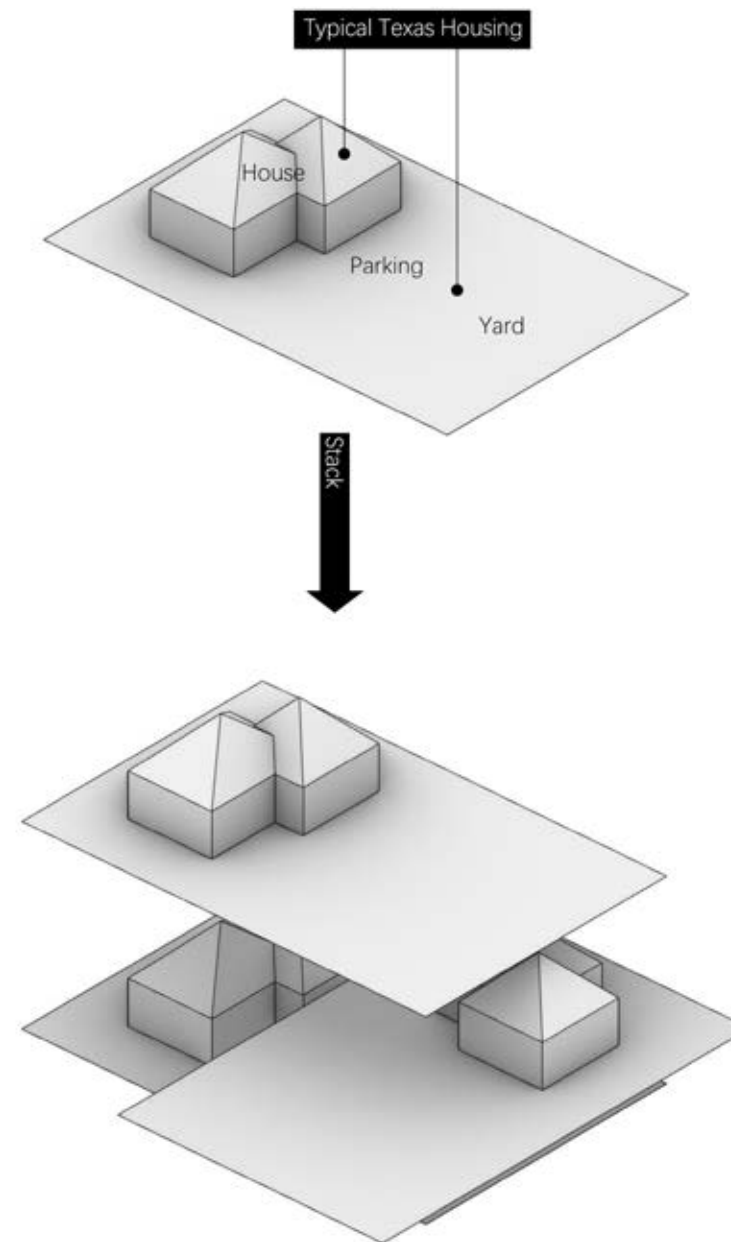
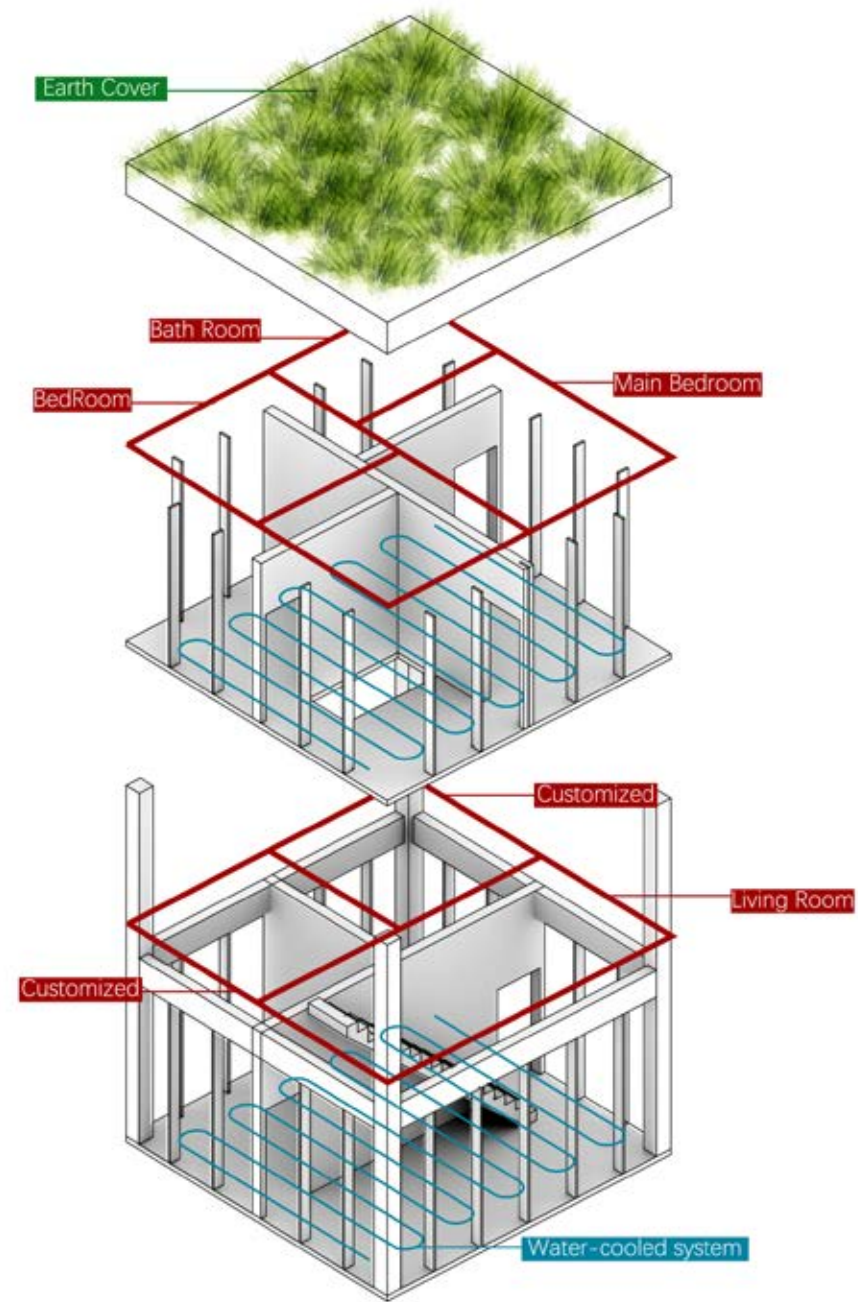


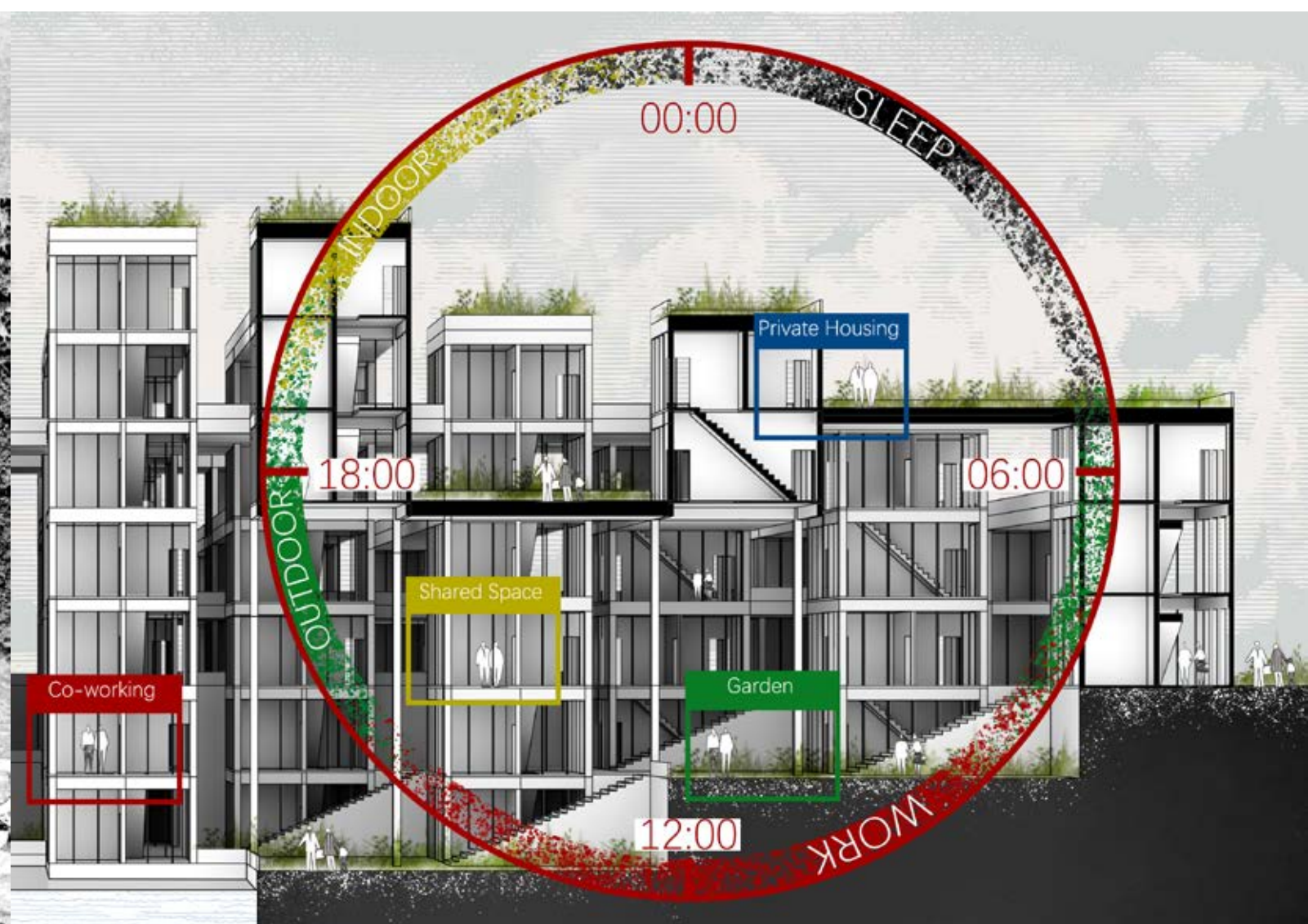
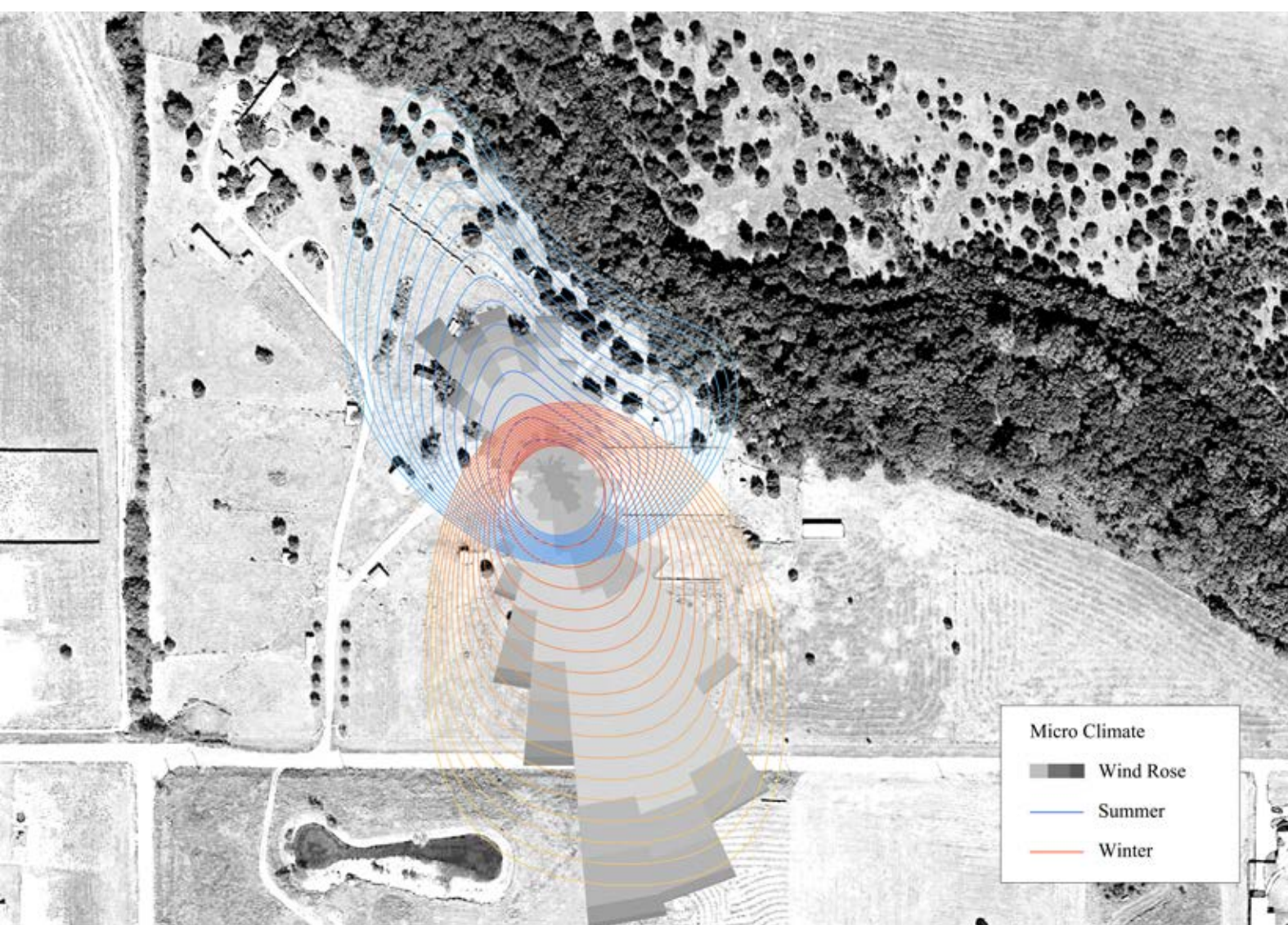
Arborescent



Rhizome









CAN WE MAKE NYC A GARDEN CITY?

Computational Modeling 24
Feiyang Li

SKIMMERS:

Singapore

Hangzhou

•Urban Observation

SWIMMERS:

Tree Density

Pedestrian Level

Bicycle Path Level

•Custom Tool -
Garden City Index

DIVERS:

Pedestrian Count

Bike Count

Custom Tool -
•Street Level Pedestrian
Predication

Three metrics, tree density, sidewalk grade, and bike lane grade, were taken to score the degree to which a street is a garden city by looking at a typical garden city. Based on the scores, a function is fitted and the number of pedestrians under the condition is predicted by comparing the available pedestrian-bicycle data.

TREES

PATH

COUNT

INDEX

PREDICATION

