

Squeeze Space

Columbia University
Graduate School of Architecture, Planning and Preservation
Advanced Studio V 2015
Instructor : Lise Anne Couture
Teaching Assistant: Yu Nong Khew

Premise

Following the trajectory of previous studios, this semester's project will also reside at the intersection of the urban realm and culture where we speculated upon and critiqued the surface and thickness of enclosure as the interface between architecture and the city, and between exterior public space and interior private space.

In the studio *Plastic and Elastic* the title was understood not only in the sense of an aesthetic or physical quality but also described a terrain that enables multiple kinds of shared and overlapping exchanges and experiences. This semester we will expand beyond the surface as interface to speculate upon interstitiality as a spatial interface, a malleable space that we will call *Squeeze Space*; an 'in between' space that shapes, and is shaped, by both interior and exterior - most importantly a space of negotiation that will be used to resolve the problematic of iconicity and the status of the architectural object in the city.

To undertake this investigation the project this semester will entail the exploration, reconceptualization, and design of architectural proposals for the housing of spectator events, performance or spectacle (such as performing arts center, arena etc.)

The projects will each initially comprise a large interior spatial volume for spectator events and audience (the Core) and an architectural enclosure (the Shell). These components, simultaneously co-dependent and autonomous, are tethered one to the other through and across the interstitial Squeeze Space.

Squeeze Space is to be invented, to accommodate new programs, to be responsive, supportive, adaptive and flexible.

As a space of negotiation, Squeeze Space is a space of reciprocation, retaliation, recuperation and reverberation; a space that exists and is activated by the Core and Shell, and by extension also exterior surroundings and events

Squeeze Space will be deployed as a strategy that subverts and resists dominance of either Shell (enclosure and exterior architectural expression) or the Core (interior space and program) to create significant urban architecture that is the result of both and neither.

Questions to be explored: How are the spaces of performance or spectacle shaped and how are they experienced? What is the impact of mediated space, of simulcast, broadcast and social networks? How might spaces transform, adapt and be flexible? What is the effect of mutability and transformability on different aspects of the architecture? What kind of collateral programs can be included? How does the Squeeze Space intervene between the architecture of the interior and the enclosure? How does it contribute to and shape the exterior form? How is the urban environment and public engaged?

Program

Students will design a new building based initially on the analysis of different types of spectator events as well as select precedents of spatial typologies such as performance hall, auditorium, theater, stadium, arena etc. The space of performance and the spectator will be critiqued and new forms of spatial engagement will be speculated upon and explored. Optional types of events to be explored include, but are not limited to: music, theater, performance art/installations, auction, fashion show, circus, dog show, rock concert, rave, rally, beauty pageant, horse show, rodeo, bullfight, as well as sporting events and competitions such tennis, gymnastics, wrestling, boxing, track & field, soccer, basketball, lacrosse, hockey, skating, and cycling among others

Site

The site is located in downtown Manhattan site along the Hudson River directly opposite the New Whitney Museum on piers 52-53. The architecture of the Museum will serve as a frame of reference for the studio, a critical mirror with respect to the problematic relationship between architecture and representation and the status of the icon in the city.

Studio Process

The studio will meet every Monday and Thursday. The studio will be initiated through exercise that will entail research and conceptual analysis will

Schedule

Mid-Review

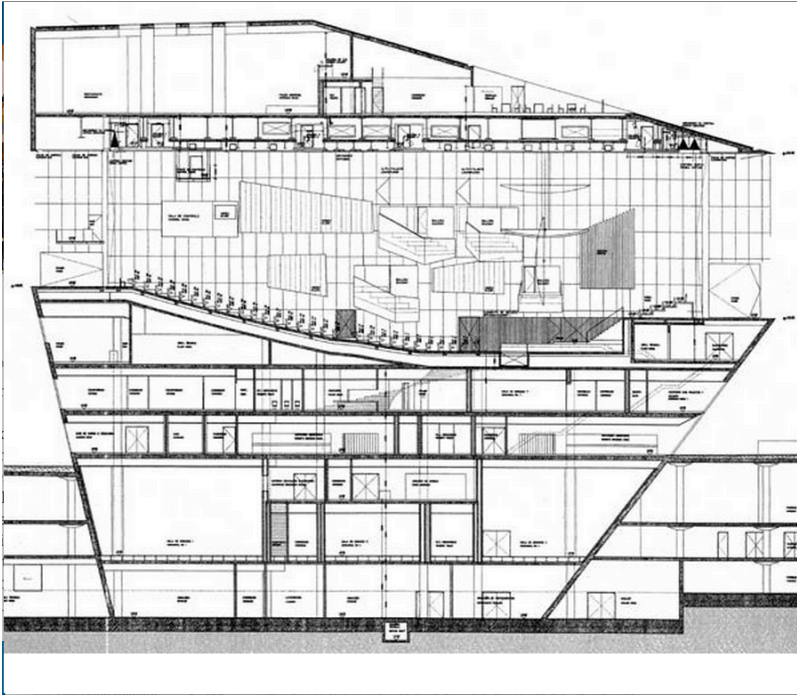
11/6 Friday 2-6pm

412 Avery

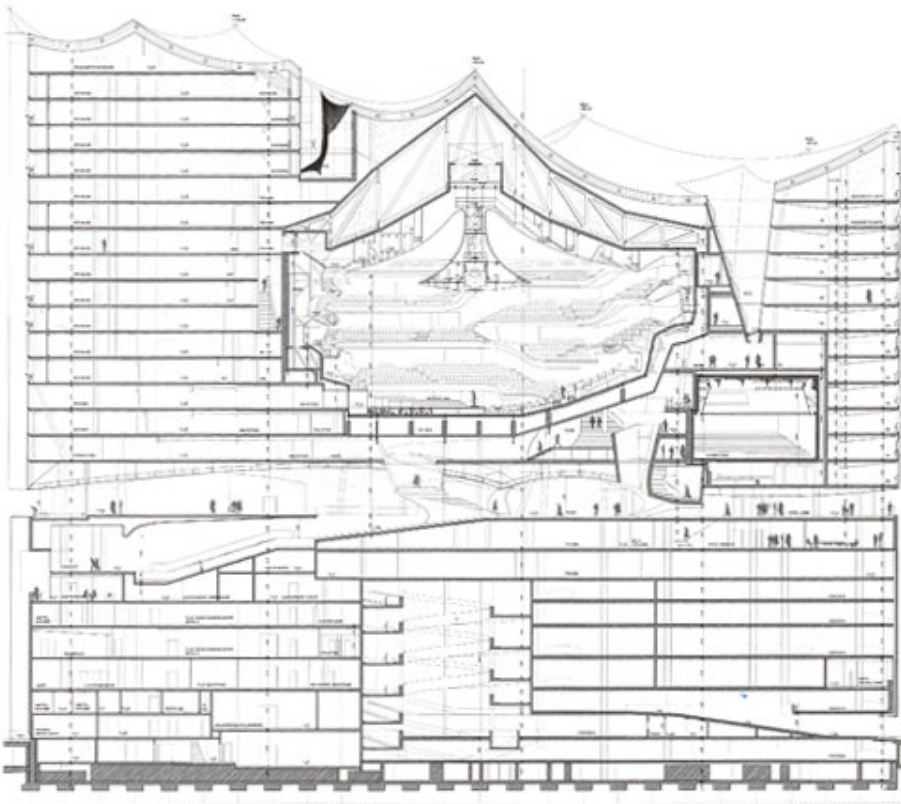
Final Review

12/16 Wednesday 2-6pm

Ware lounge



Casa del Musica, OMA



Elbe Philharmonic Hall, Herzog and De Meuron