

Feng, Yen-Chi

Architecture Portfolio 2025



M.S. Advanced Architectural Design, Columbia University

Content

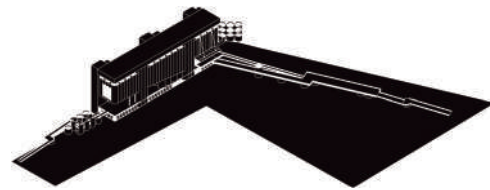
Academic Projects

01. Inside Out Library
Apaptive reuse of Grand Terminal in Red Hook community
(ADV VI STUDIO, Spring Semester, 2025)
02. Street-in-street Fashion Hub
Renovation of row house in Chinatown
(ADV V STUDIO, Fall Semester, 2025)
03. Absorptions
Adaptive Reuse of Office Building in Park Avenue
(ADV IV STUDIO, Summer Semester, 2024)
04. Self Portrait, Poster, Font Design
Digital Graphic & Typeface design
(Multigraphics and Representation, Spring Semester, 2025)
05. Courtyard Kindergarten
Children's Space Section Design
(Designing space for children, Spring Semester, 2025)

Architecture has always been my life journey as an architect, seeking a balance between rationality and sensibility. The portfolio includes projects from urban scale to architectural detail design, from adaptive reuse strategy, energy-saving ecological issues, to cultural research and exploration, immigrant topics, children's space design, and digital graphic projects to hand-drawing works. The portfolio includes academic works from the GSAPP in 2024-2025. It is a series of self-thinking processes and achievements in the field of architecture.

Inside Out Library

Apaptive reuse of Grand Terminal in Red Hook community



Academic Project

ADV VI STUDIO

Year: Spring Semester, 2025

Location: Brooklyn, New York

Type: Individual Work

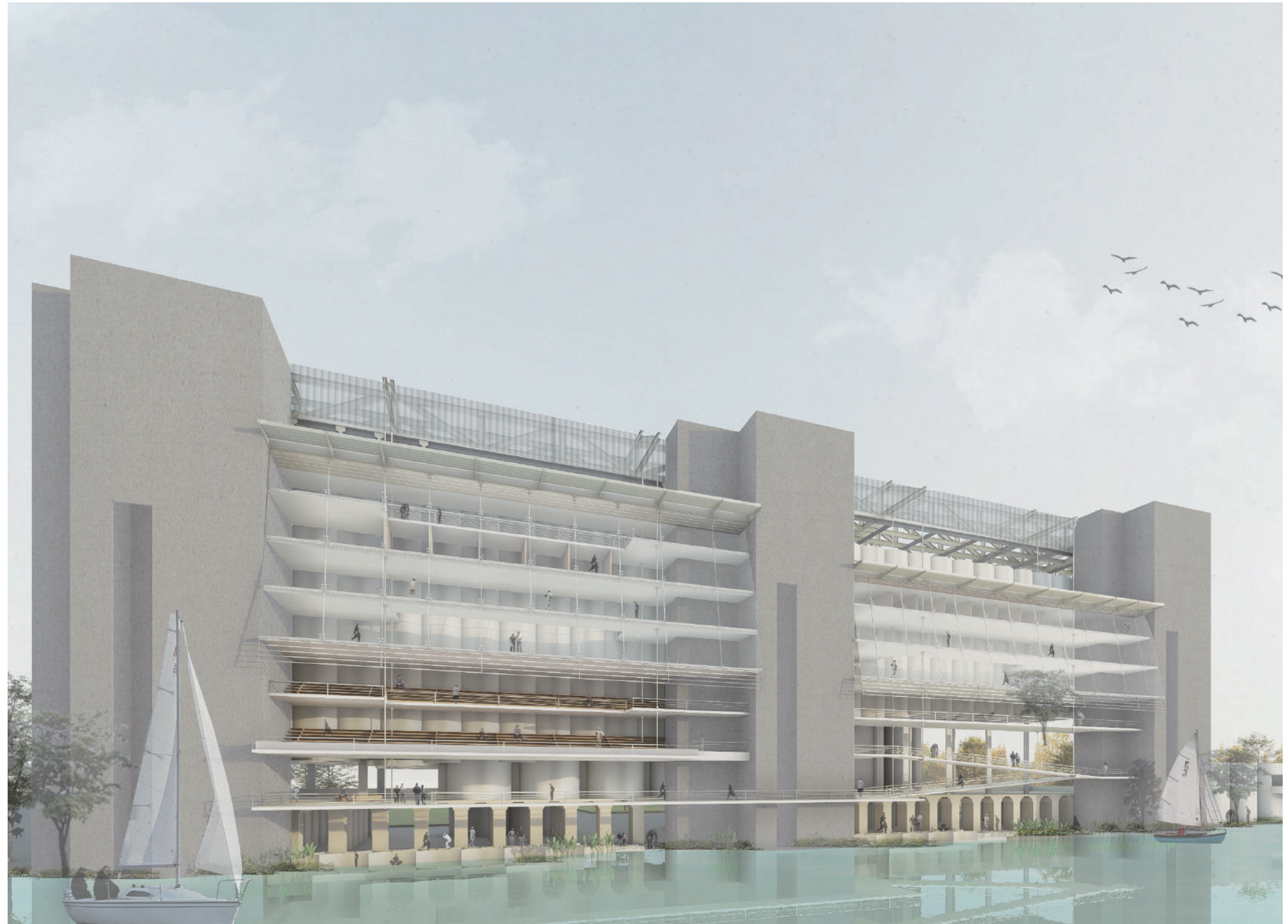
Instructor: Laurie Hawkinson, Hubert Chang

The Red Hook Grain Terminal served as a grain storage space in the last century. Nowadays, the stored items are not just physical but could have become containers for knowledge. The New York Public Library comprises three libraries that operate independently. Since the site is located in Brooklyn, it is considered one of the new branches of the Brooklyn Public Library.

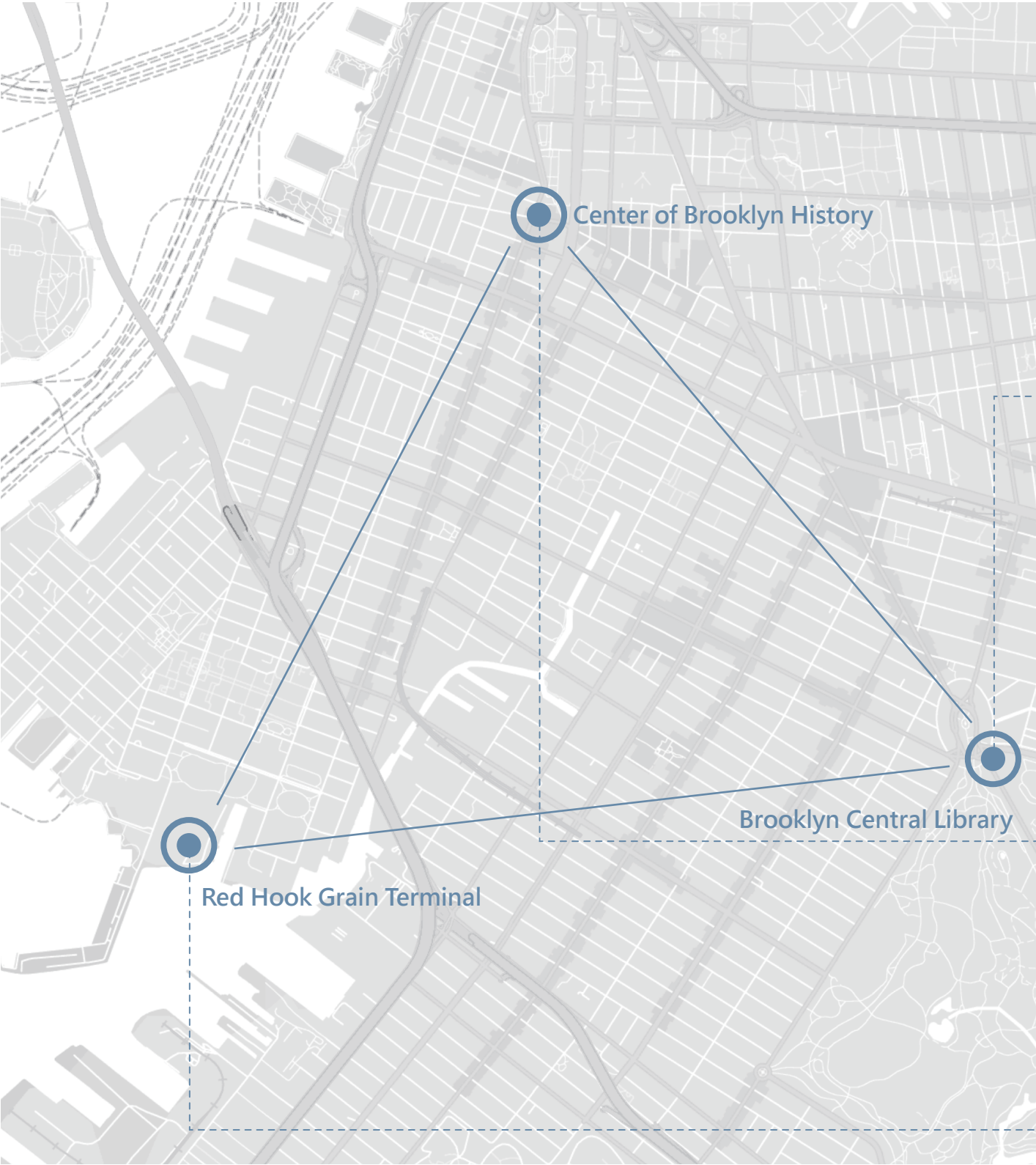
The circulation system of books and off-site storage space play a vital role in the Brooklyn Public Library. Unfortunately, both are little known to the community and easily overlooked, and there is a practical demand and potential for improvement in the existing library system.

What role does the library play in the Red Hook community?

The concept of the Inside Out Library: on one hand, it breaks the existing closed nature of library spaces, extending part of the library space into the city, becoming part of an open space where users can freely explore the area between indoors and outdoors. On the other hand, it aims to create a library space that allows the public to freely browse archives, presenting books and collections that were initially stored in closed archive rooms in a different form to users, providing value for reading and display.



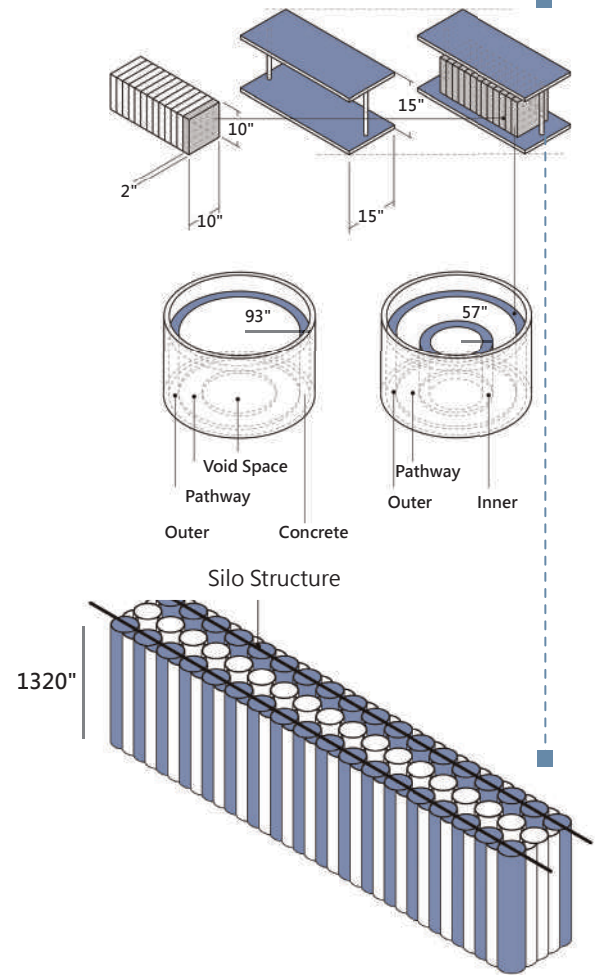
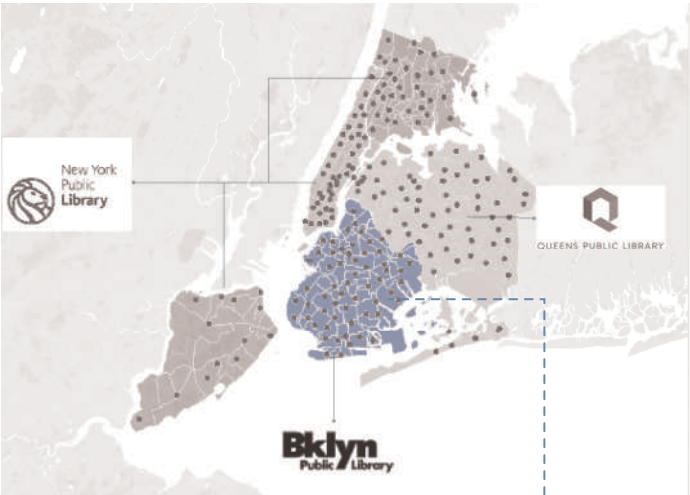
INSIDE OUT LIBRARY
Adaptive reuse of Grain Terminal



The Library System in New York:
Off-site Storage plays a seemingly inconspicuous but vital role in the New York library system. Although BPL does not have a large Off-site Storage space like ReCAP, it merged with BHS in 2020, transferring some collections and books to the newly established CBH. Due to the vast number of collections, two additional Off-site Storage spaces have also been established. Also, Sorting service center is another key element in library system, it acquires, describes, prepares, and delivers new books for the circulating collections.

What role does the library play in the Red Hook community?

Since 2000, library spaces have been closely integrated with community activities and digital e-books, making the concept of urban living rooms mainstream; furthermore, what other possibilities might future libraries hold?



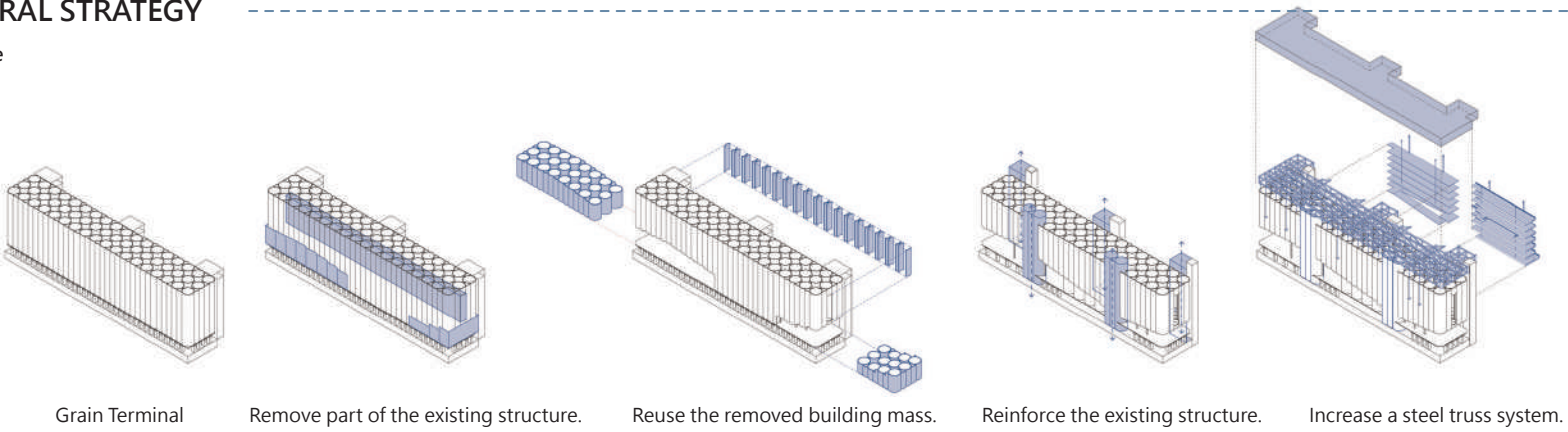
Estimate the Capacity of Book: 856,800



INSIDE OUT LIBRARY
Adaptive reuse of Grain Terminal

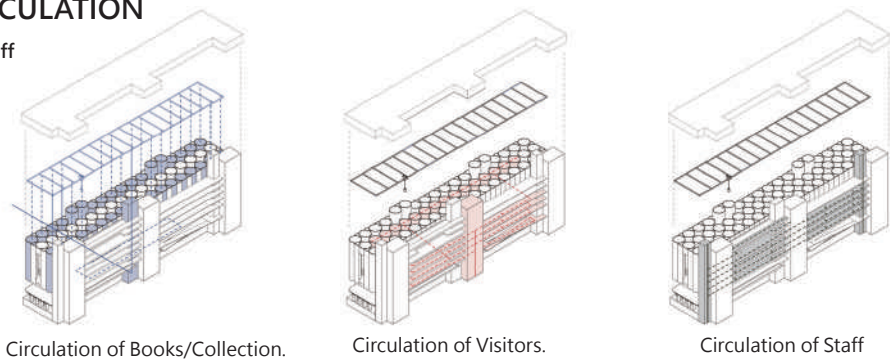
STRUCTURAL STRATEGY

Adaptive reuse



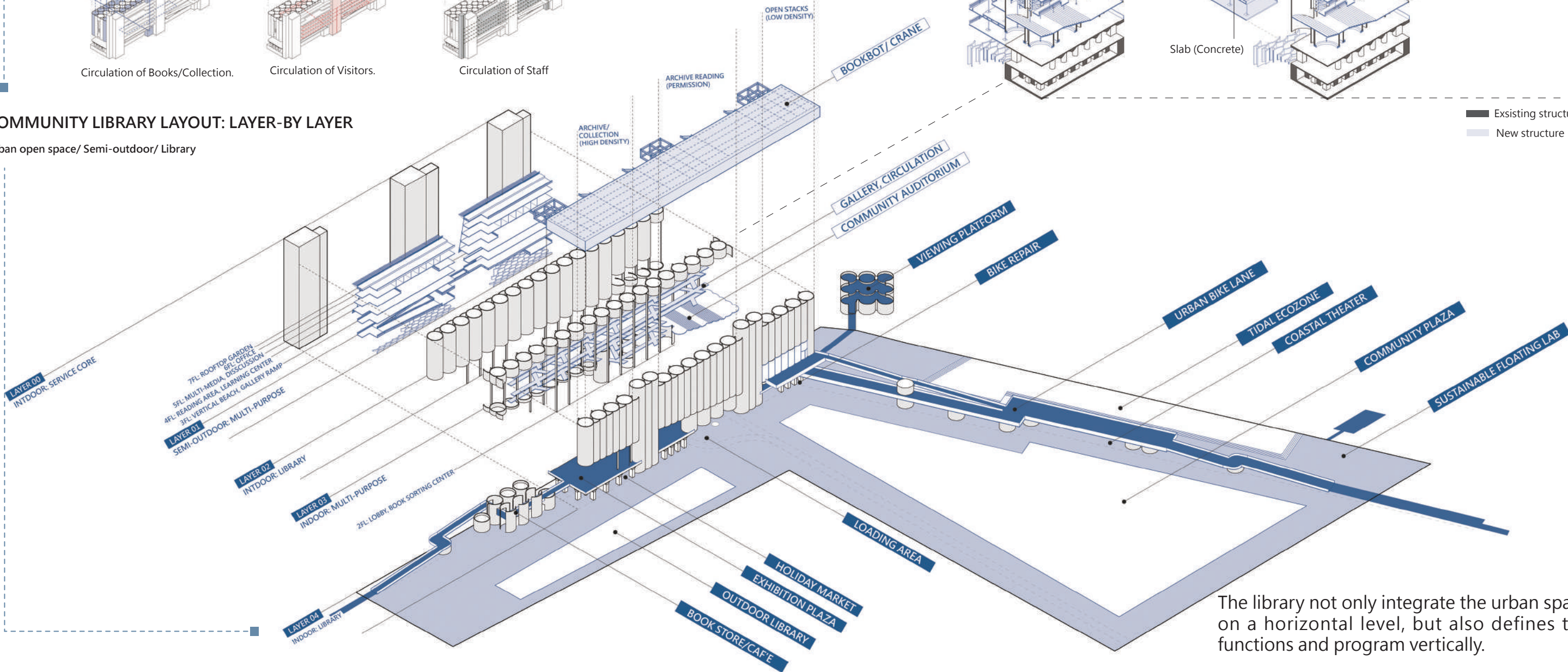
LIBRARY CIRCULATION

Books/ Vistors/ Staff



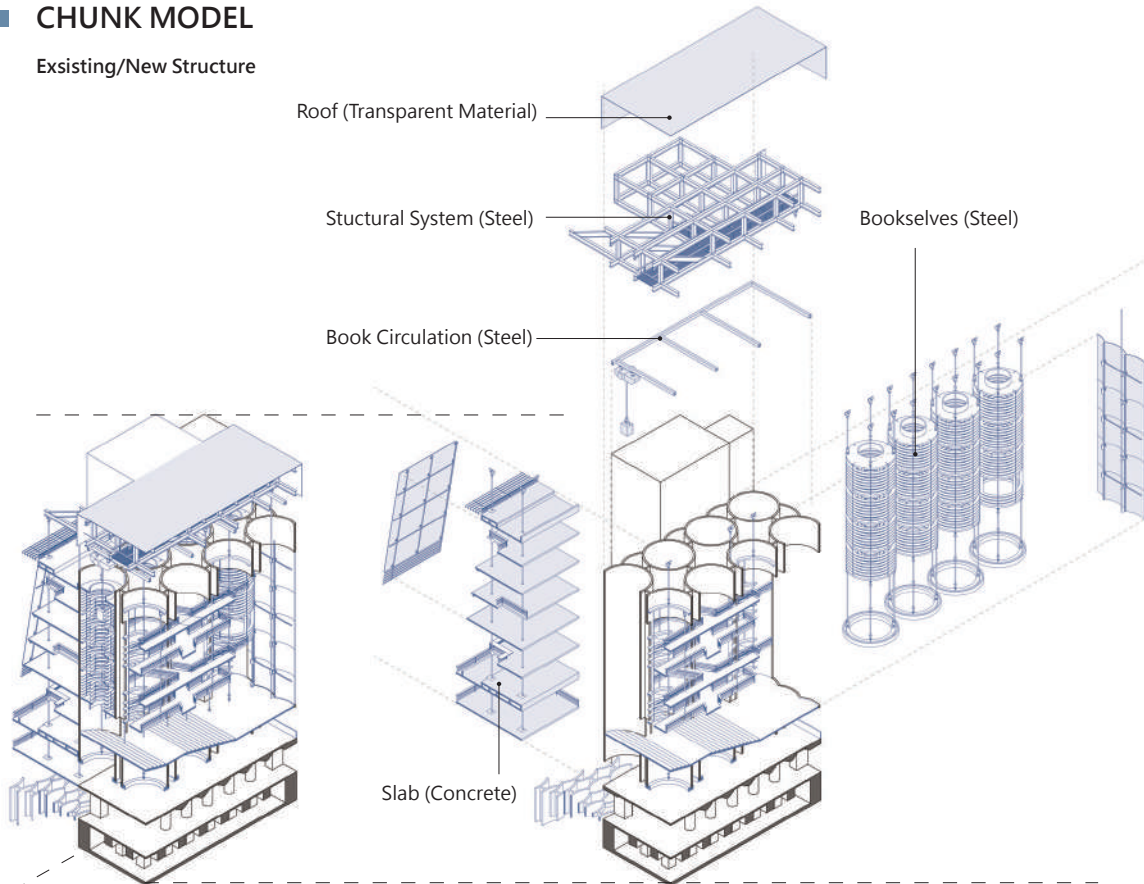
COMMUNITY LIBRARY LAYOUT: LAYER-BY LAYER

Urban open space/ Semi-outdoor/ Library



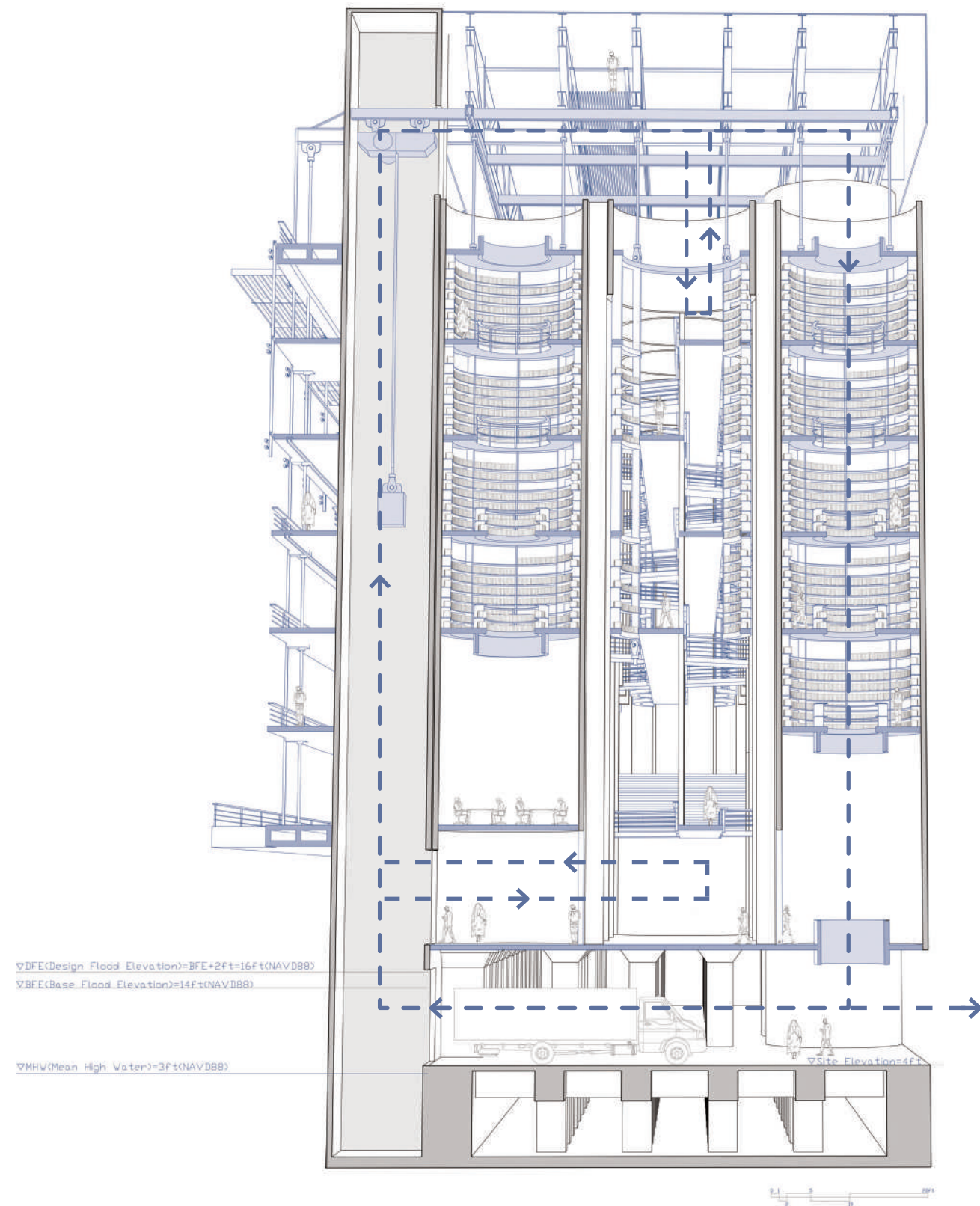
CHUNK MODEL

Existing/New Structure



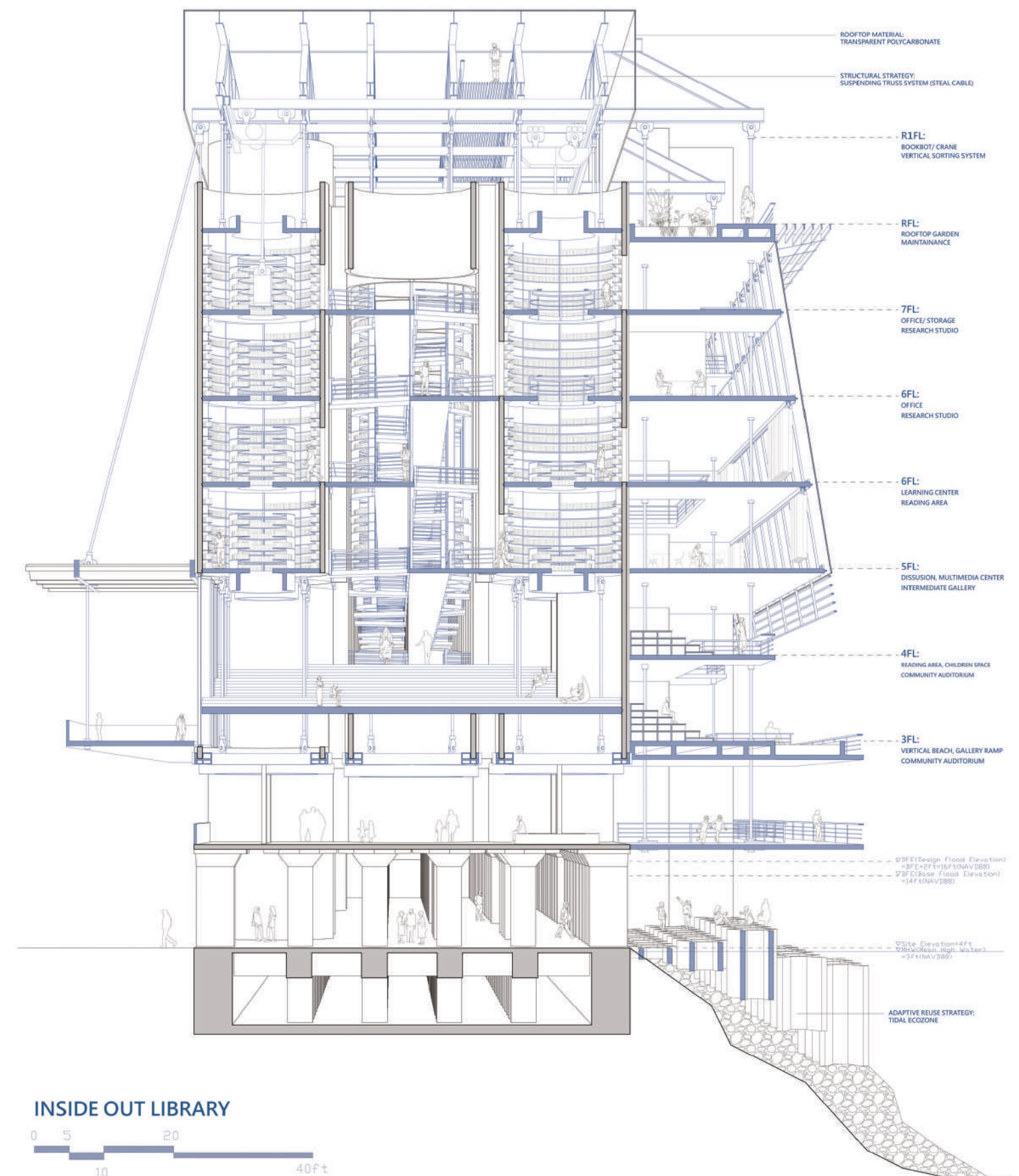
Existing structure
New structure

The library not only integrate the urban space on a horizontal level, but also defines the functions and program vertically.

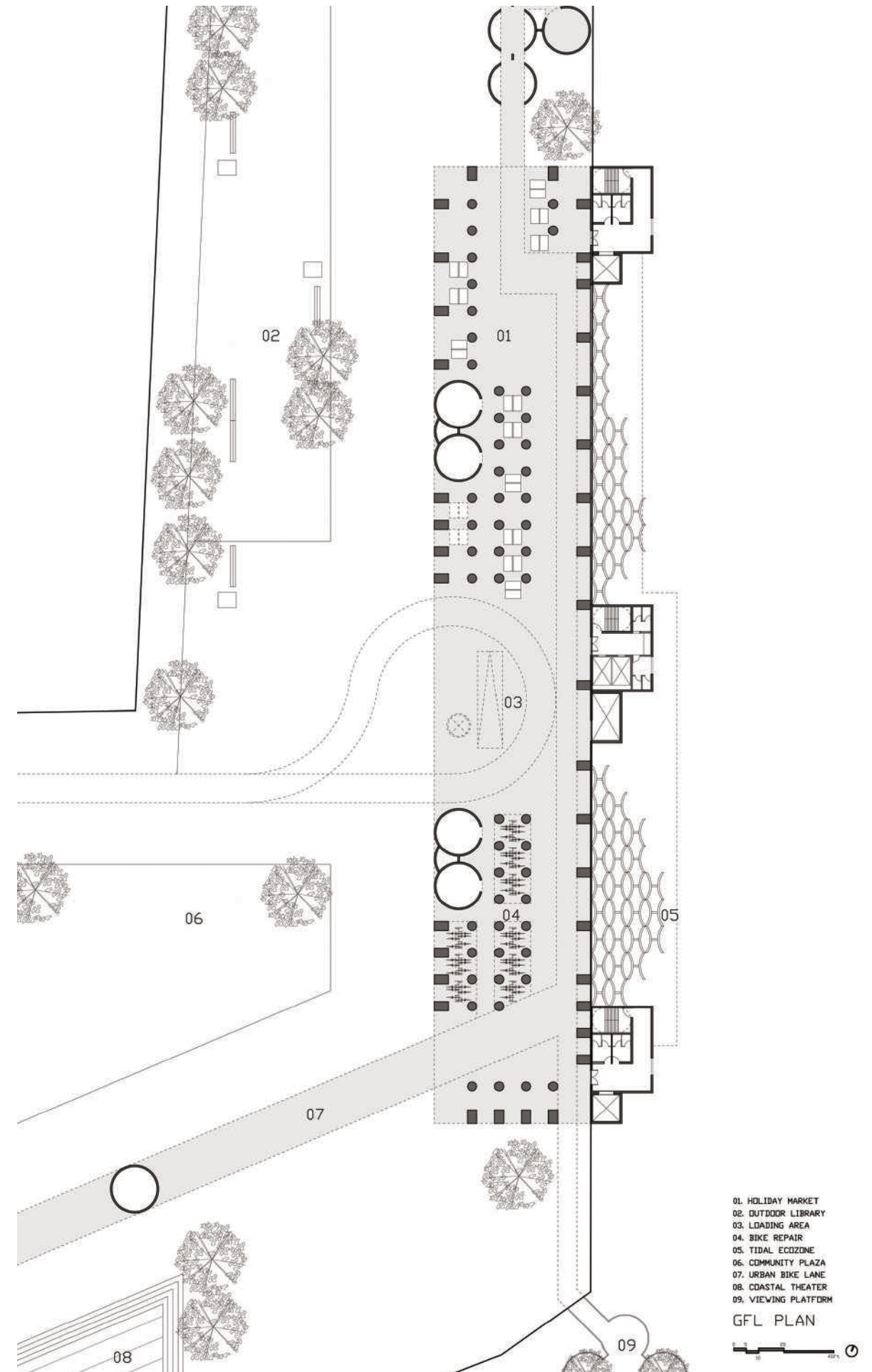


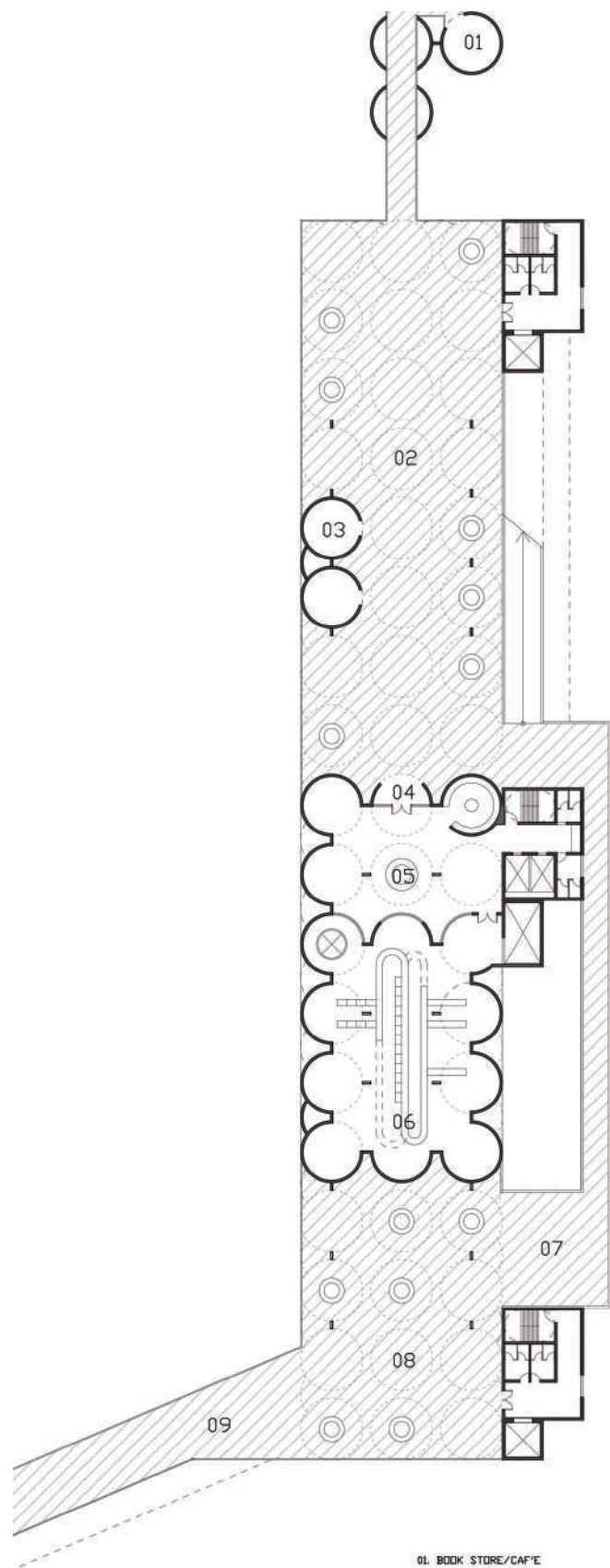
The circulation of Books:

Just as the Grain Terminal stores grains, the library system's circulation will be verticalized.(Loading- Sorting- Labeling- Repairing- Storage- Exhibition-Shipping)



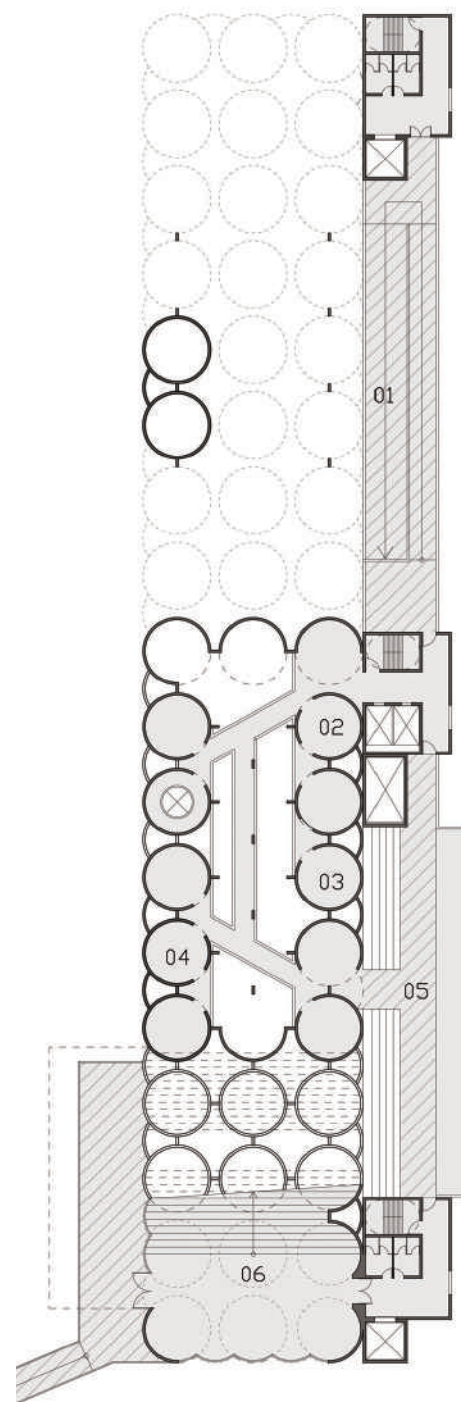
INSIDE OUT LIBRARY





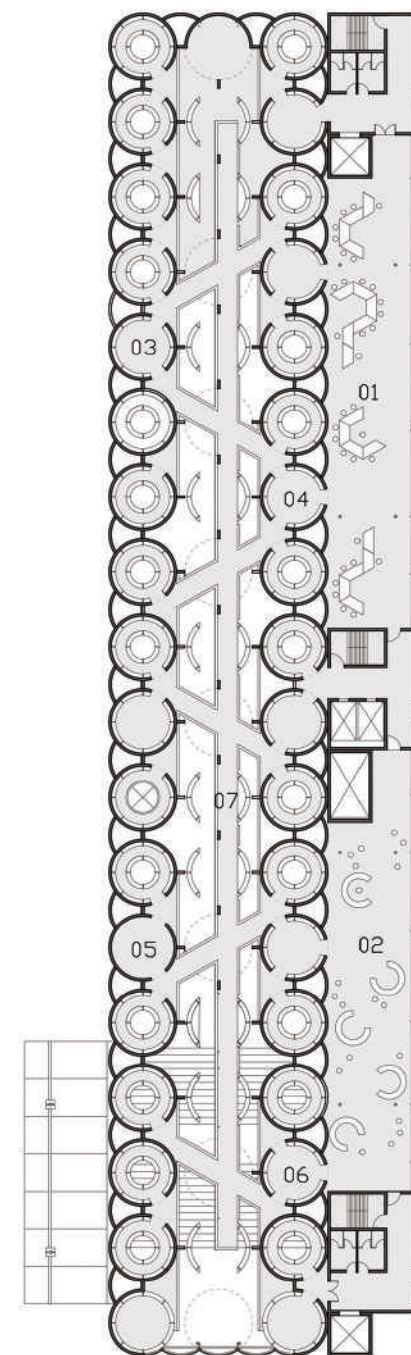
- 01. BOOK STORE/CAFÉ
- 02. SEMI-OUTDOOR EXHIBITION PLAZA
- 03. SELF-CHECKOUT STATION
- 04. ENTRANCE
- 05. LOBBY
- 06. BOOK SORTING SERVICE
- 07. URBAN BIKE LANE
- 08. READING AREA
- 09. SKYWALK

2FL PLAN



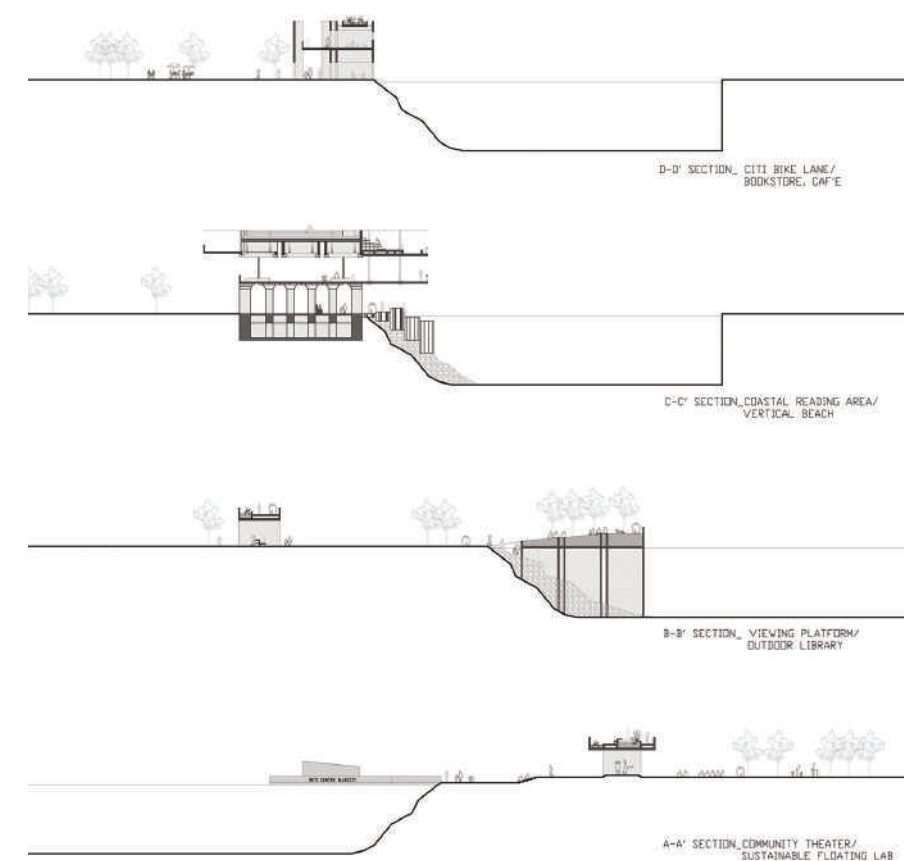
- 01. DISPLAY GALLERY
- 02. NEW BOOKS
- 03. NEWSPAPER/PERIODICALS
- 04. MULTIMEDIA
- 05. VERTICAL READING BEACH
- 06. COMMUNITY AUDITORIUM

3FL PLAN



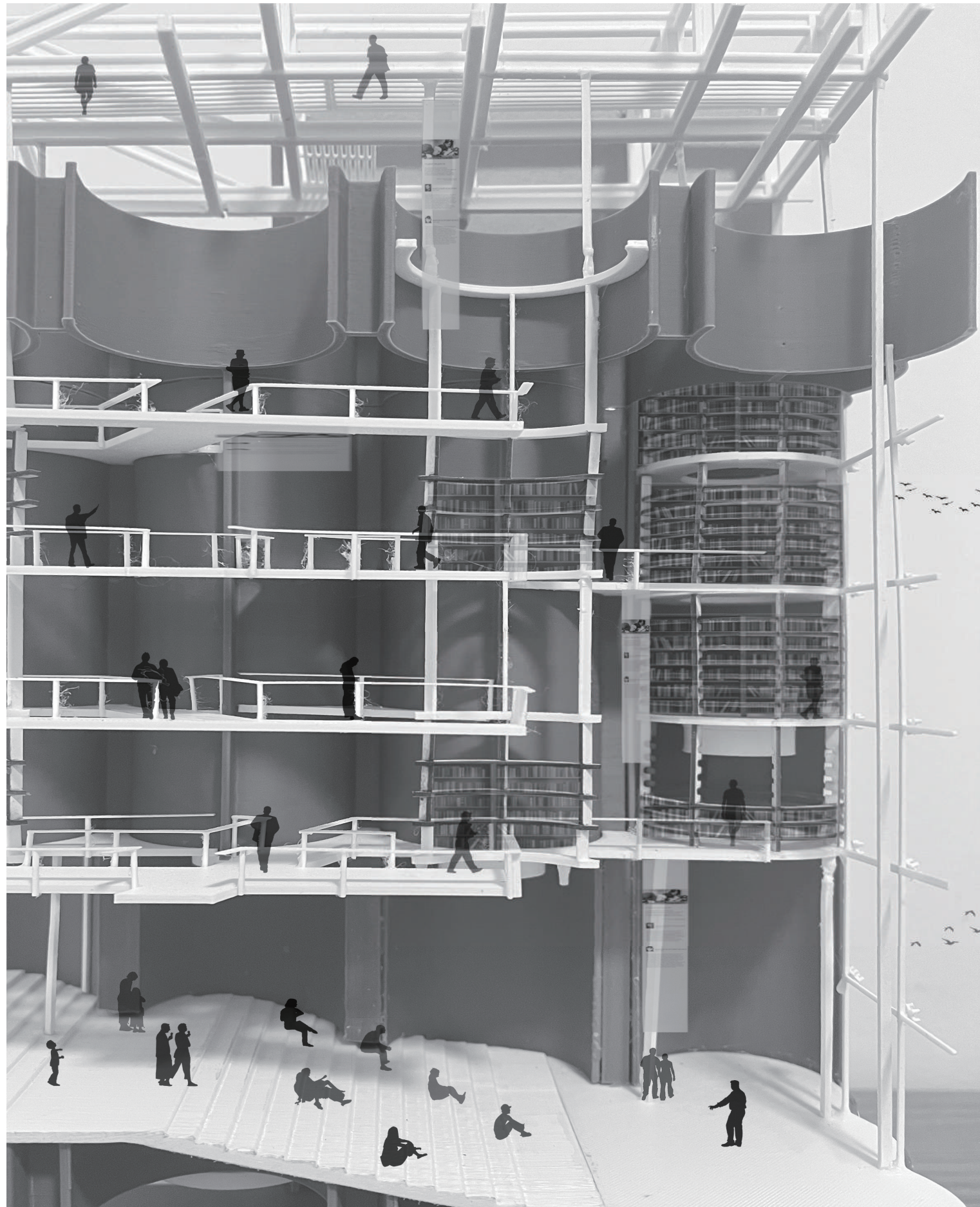
- 01. LEARNING CENTER
- 02. CHILDREN READING ROOM
- 03. ARCHIVE/COLLECTION (HIGH DENSITY)
- 04. ARCHIVE READING (PERMISSION)
- 05. RESEARCH ROOM
- 06. OPEN STACKS (LOW DENSITY)
- 07. INTERMEDIATE SPACE (GALLERY, BOOKSHELF)

5FL PLAN



The Extension of Outdoor Library:

Centered around the library, two urban axes are created, where the spaces extending along the axes may include bike paths, community theaters, markets, cafes, bookstores, vertical beaches, reading lawns, mobile libraries, and more.



The Intermediate Spaces of Library:

To strictly control the temperature and humidity of the collection space, two intermediate spaces were created: one is a semi-outdoor multipurpose area facing the sea, and the other is the central corridor within the building, providing functions for reading, exhibition, and social interaction, while allowing users to observe the actual processes of transporting, categorizing, restoring, and storing books..



Structural Strategy:

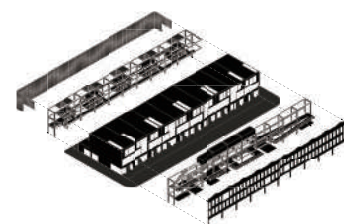
Remove part of the existing second-floor structure to create more outdoor space for the city. At the same time, remove the building mass in the central area to better align its function with the library's circulation space.



Chunck Model:
Reinforce the existing vertical circulation and some silo structures to serve as the main supporting structure for the hanging system.

Street-in-street Fashion Hub

Renovation of row house in Chinatown



Academic Project

Year: Fall Semester, 2024

Location: Brooklyn, New York

Project 01_Team members: Hsi-Ping Hung, Hsin-Jui Wu, Yen-Chi Feng
(Role: Site analysis, case study, architectural drawing)

Project 02_Individual Work

Instructor: Phu Hoang

The site is selected at one of Chinatown's busiest intersections , which are characterized by organic chaos and mixed-use. The aim is to develop this block into a sustainable fashion hub for the community. It not only merges the thriving garment industry in Sunset Park with sustainable strategies to reduce carbon footprint emissions but offers more employment and skill-learning possibilities for newly arrived Chinese immigrants.

1.) What roles do streets play in Eastern and Western cities?:

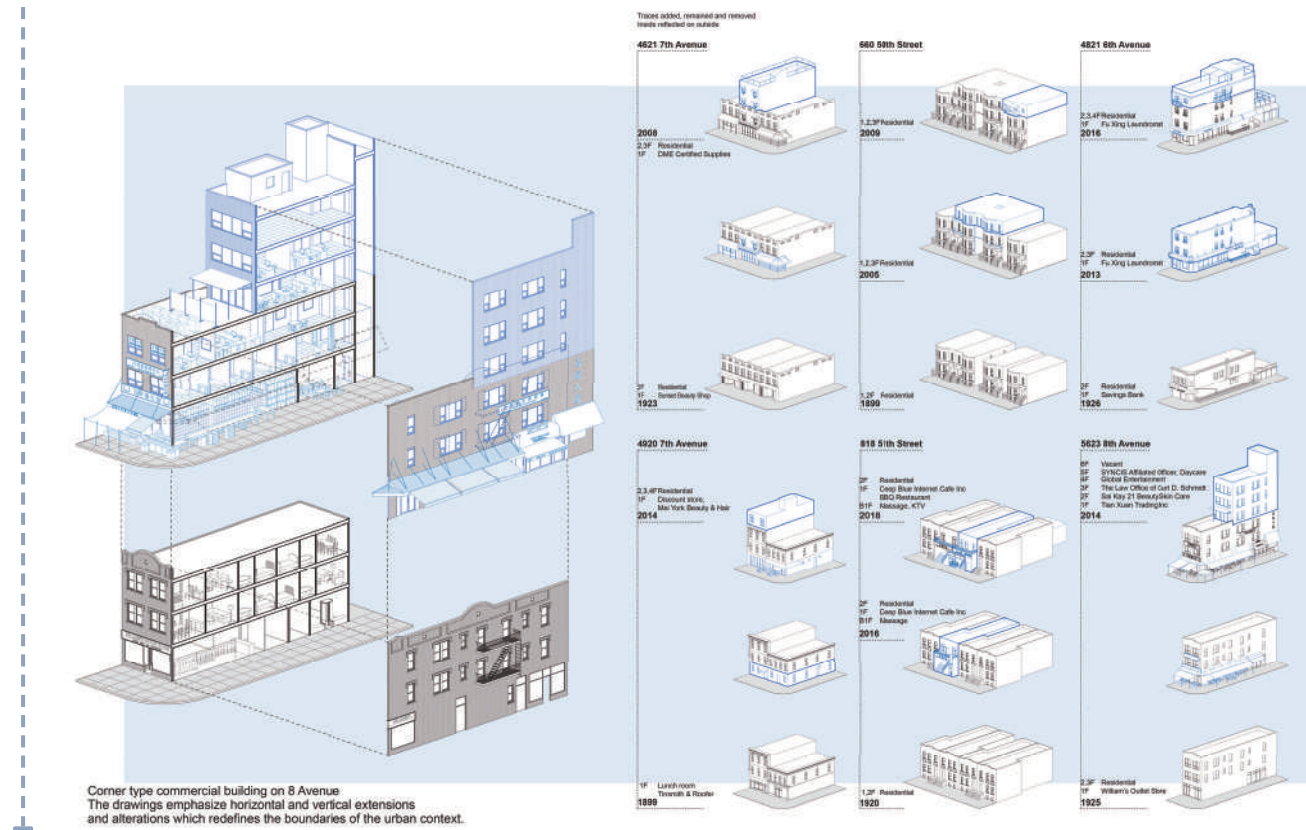
The new street in Chinatown could emphasize the horizontal intermediary spaces between urban and architecture while incorporating layered vertical dimensions of street space. This integration of time, space, and usage creates an organically blended sequence of spaces.

2.) How does a fashion hub connect with community activities?

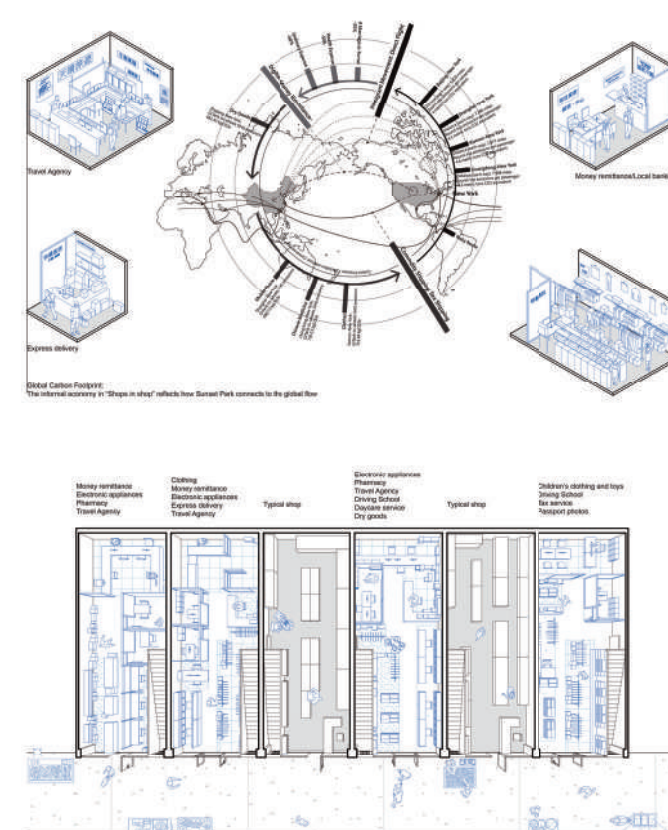
The new fashion hub aims to connect and integrate these four elements, allowing models and citizens to freely participate and engage across indoor, semi-outdoor, and outdoor spaces. It is designed to be open and shared with the local community, fostering a seamless connection with the broader urban landscape.



Project 01: Anti-Typological Traces of Acculturative Behaviors

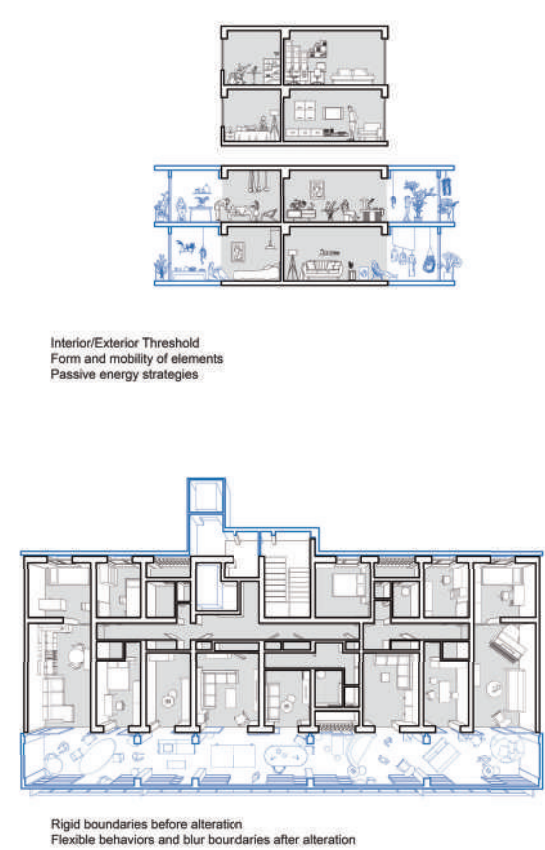


Planetary Scale -----



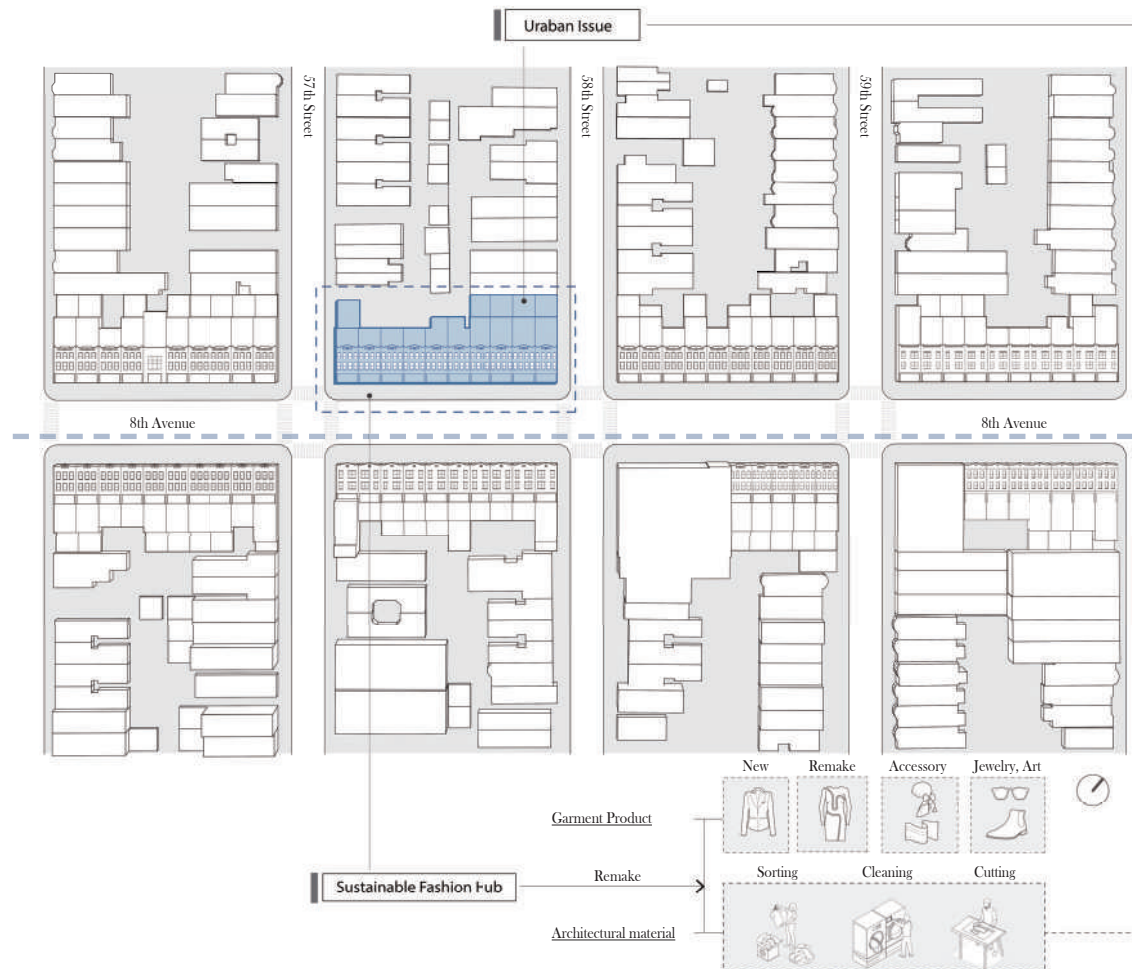
Climate Adaptive

Case Study: Transformations of 530 units: Lacaton & Vassal



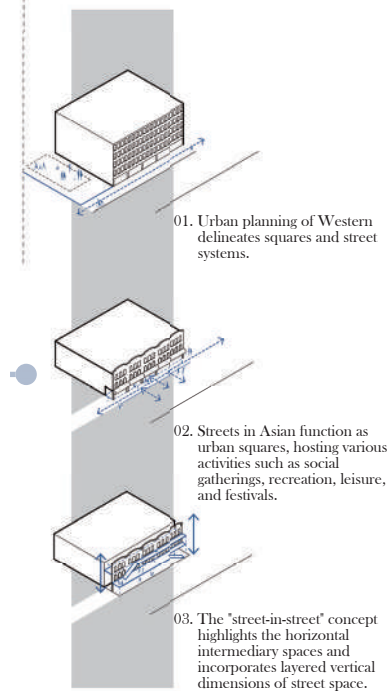
Project 02: Site analysis

Intersection of 8th Avenue and 57th Street, Chinatown, Sunset Park



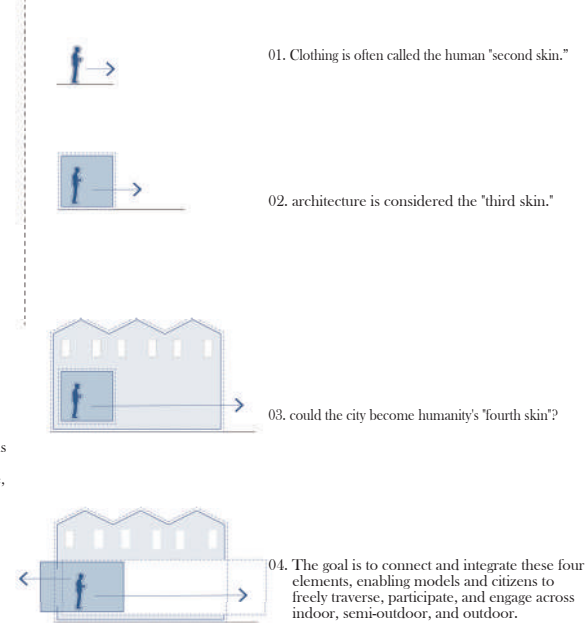
Research Question:

What roles do streets play in Eastern and Western cities?

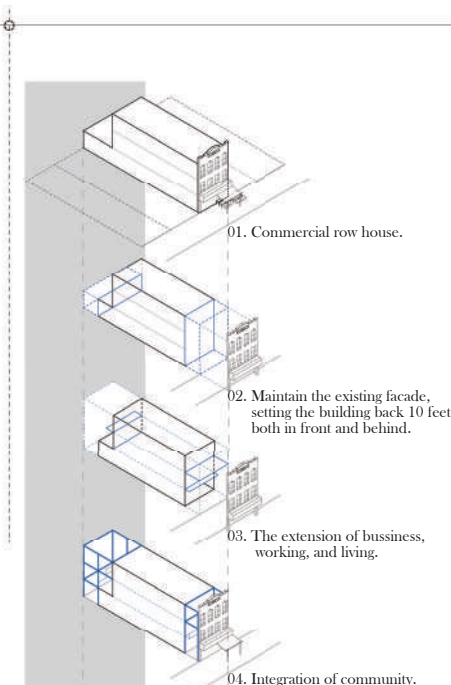


Design Question:

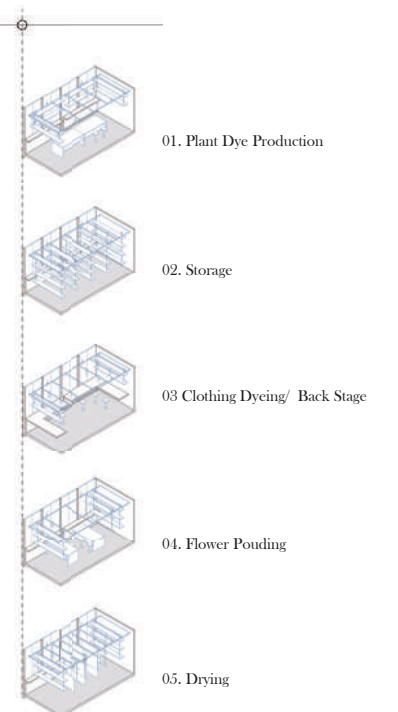
How does a fashion hub connect with community activities?



Street-in-street Strategies:

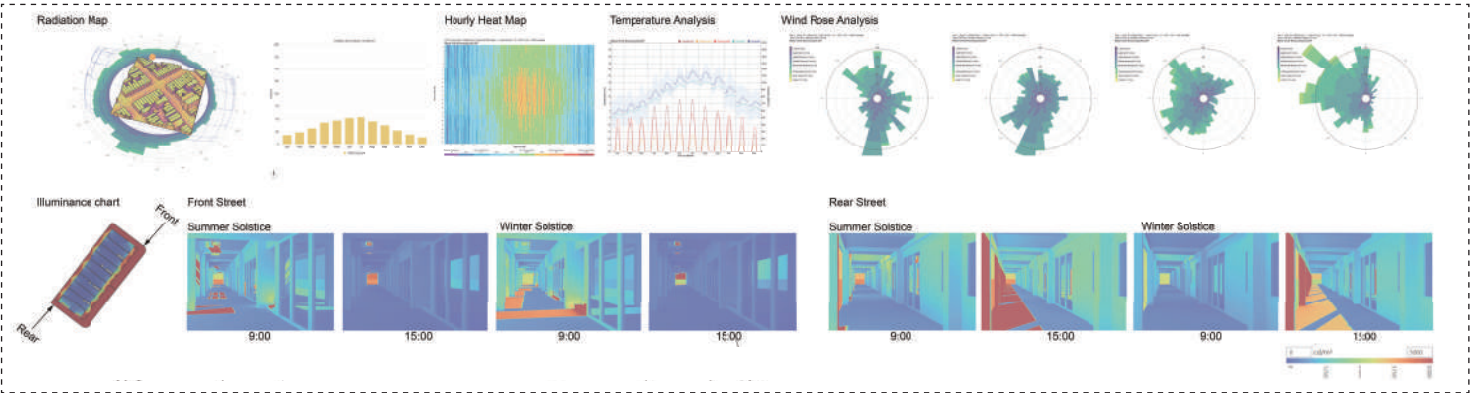


Extention- Natural plant Dye Workshop :

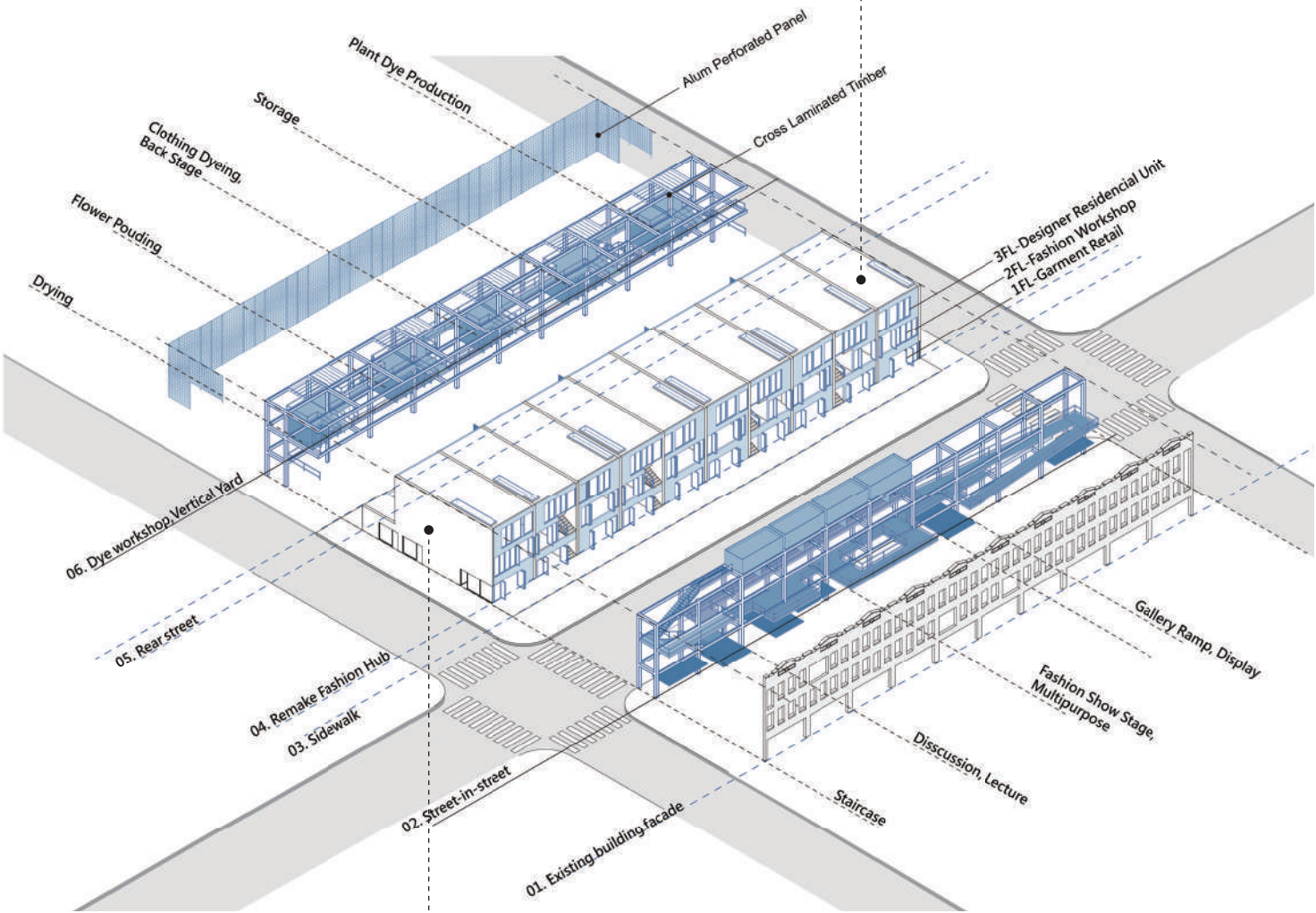


The new fashion hub aims to connect and integrate these four elements, allowing models and citizens to freely participate and engage across indoor, semi-outdoor, and outdoor spaces. It is designed to be open and shared with the local community, fostering a seamless connection with the broader urban landscape.

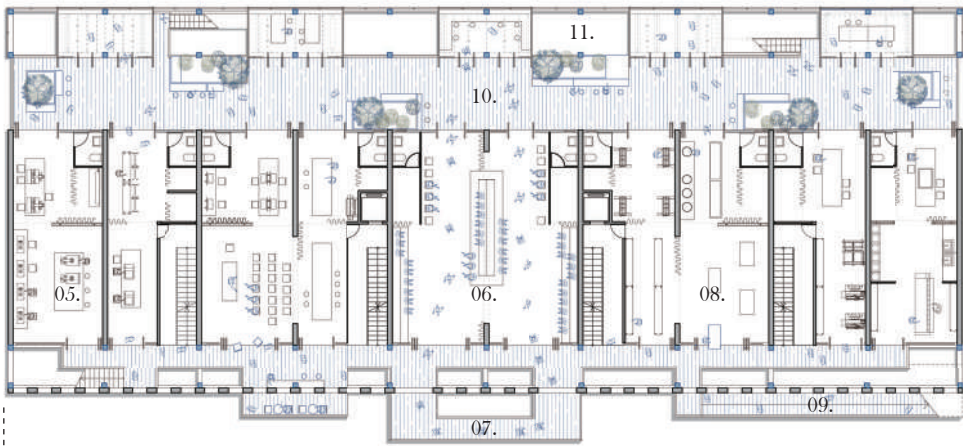
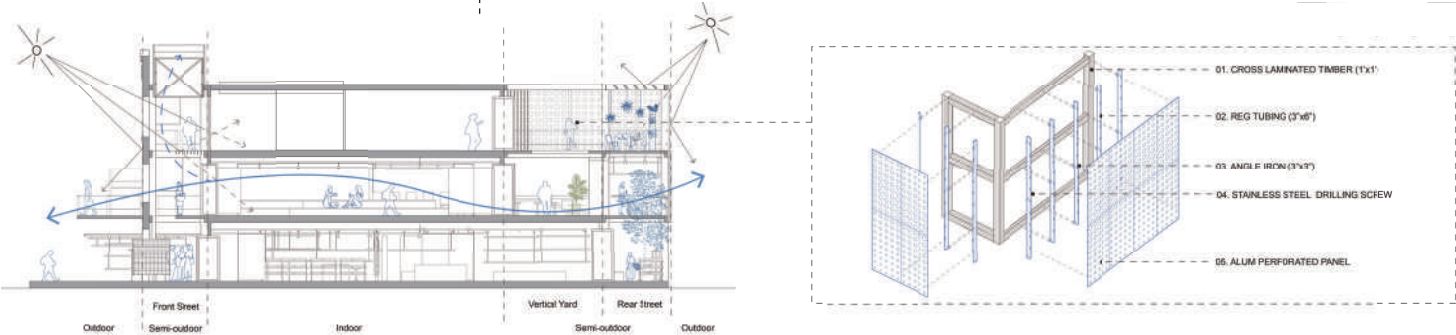
Sustainable Daylight Strategy
Site Analysis/ Daylight Simulation/ Sustainable Passive Design



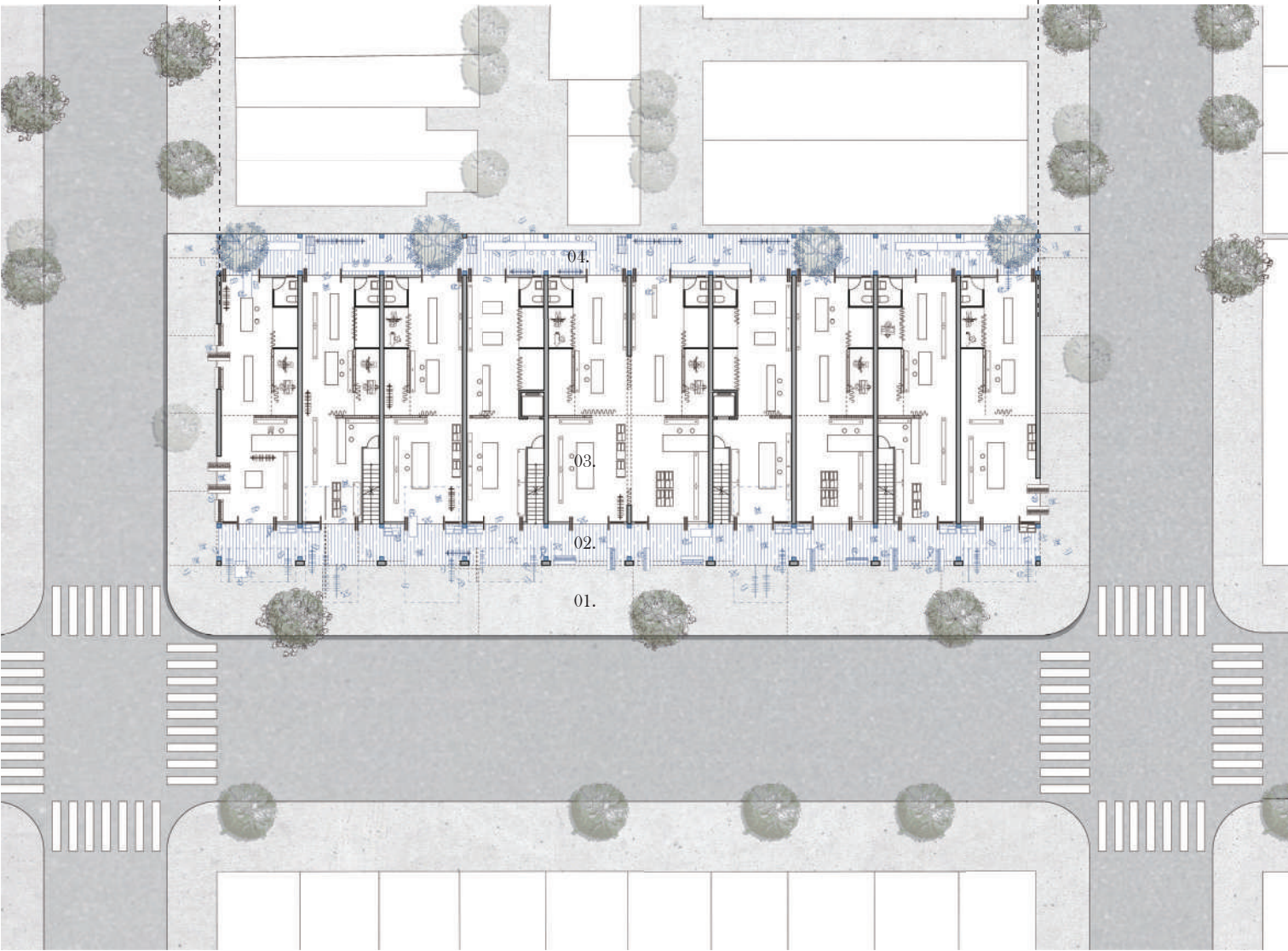
Street-in-street
Intermediate Space of the City



Climate adaptive



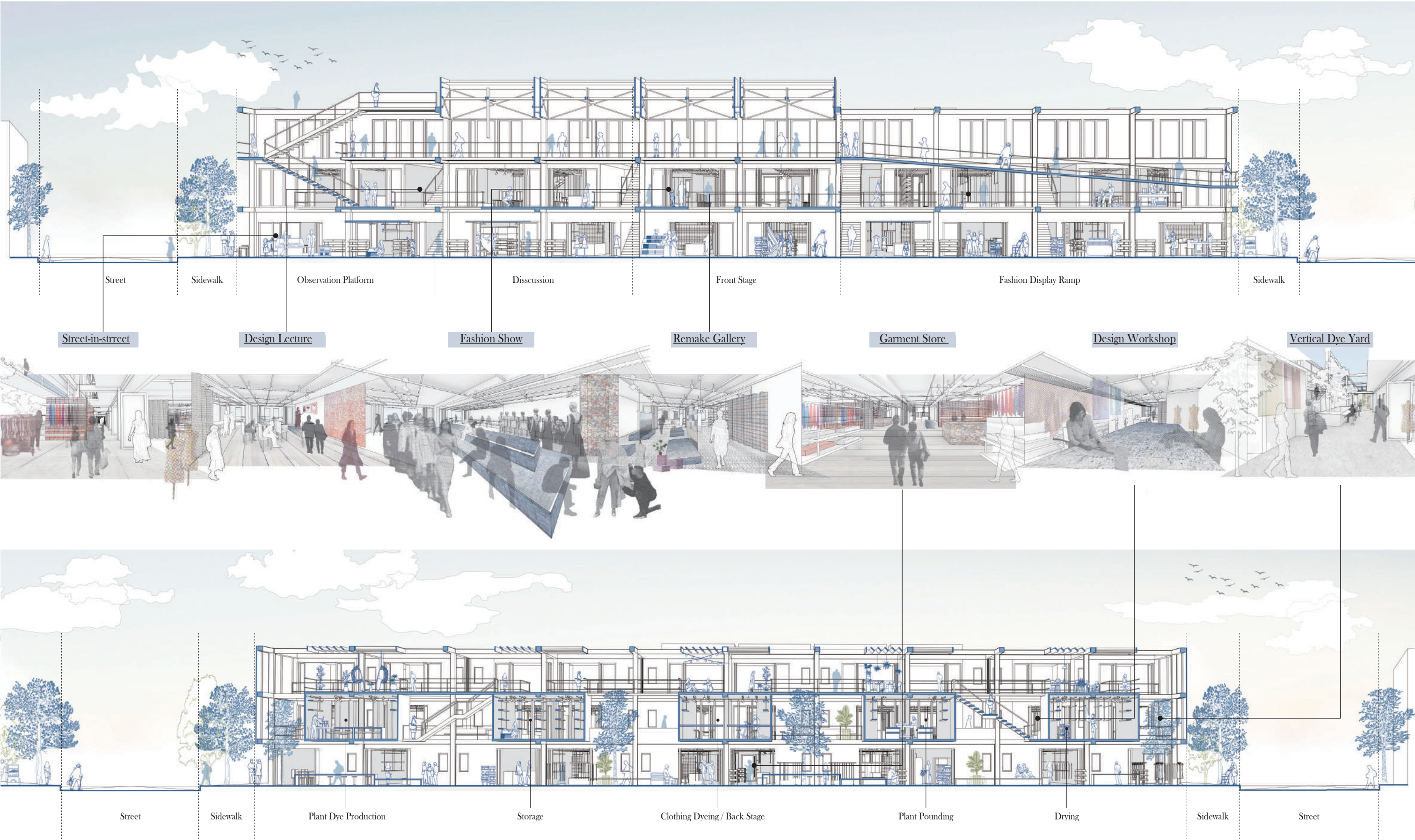
2FL PLAN



1FL PLAN ①

- 01. Chinatown Commercial Street
- 02. Semi-outdoor Street-in-street
- 03. Garment Shop
- 04. Community Rear Street
- 05. Design Workshop
- 06. Fashion Show
- 07. Freont Stage
- 08. Gallery Ramp
- 09. Remake Lab
- 10. Vertical Yard
- 11. Back Stage

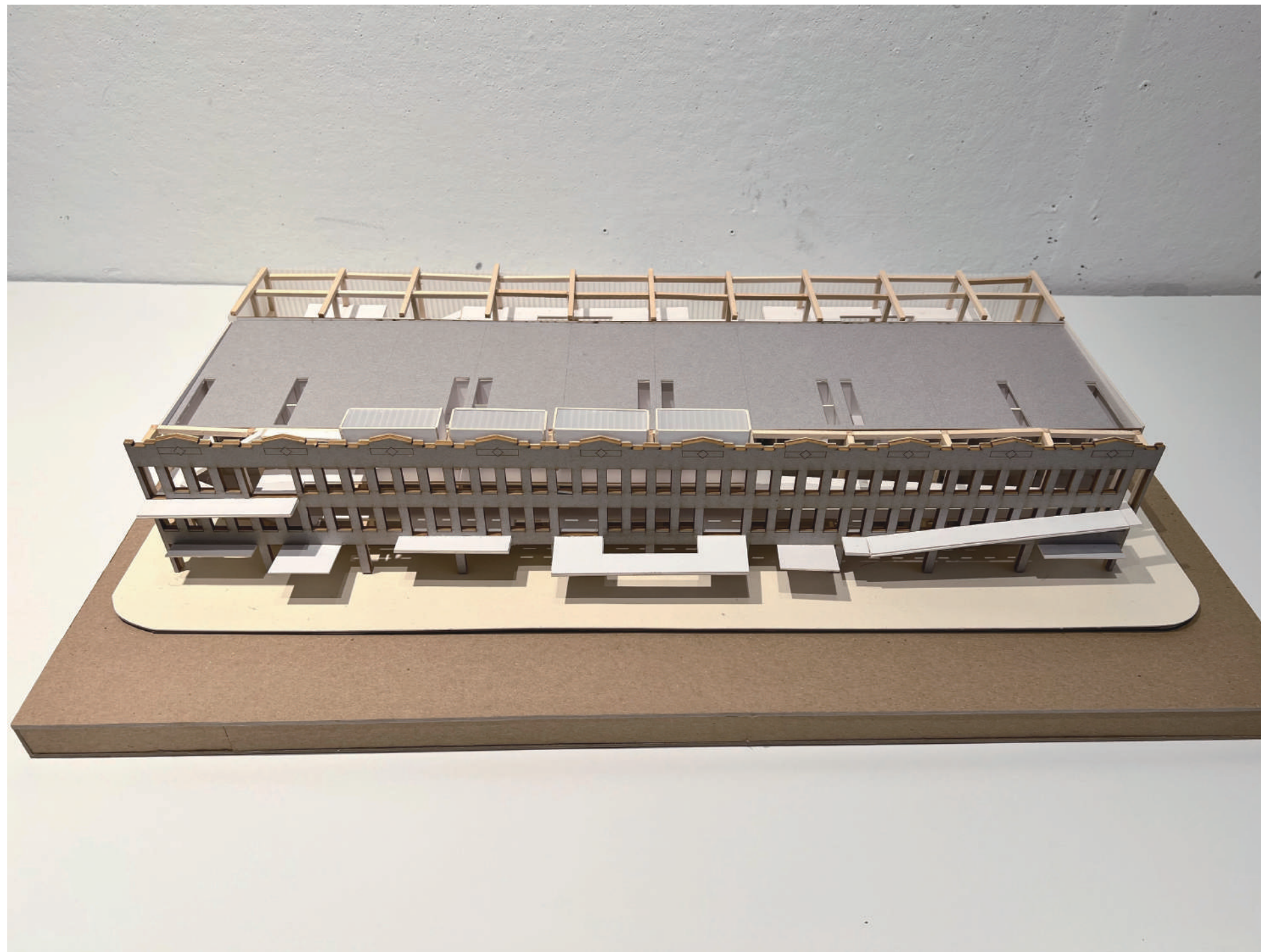
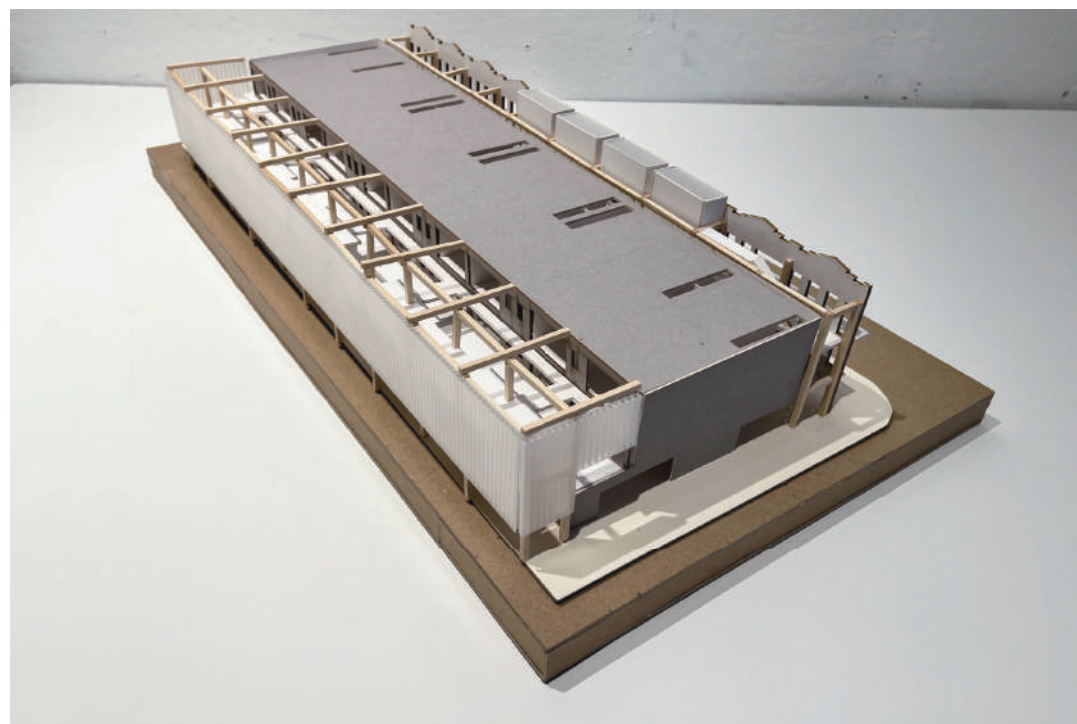
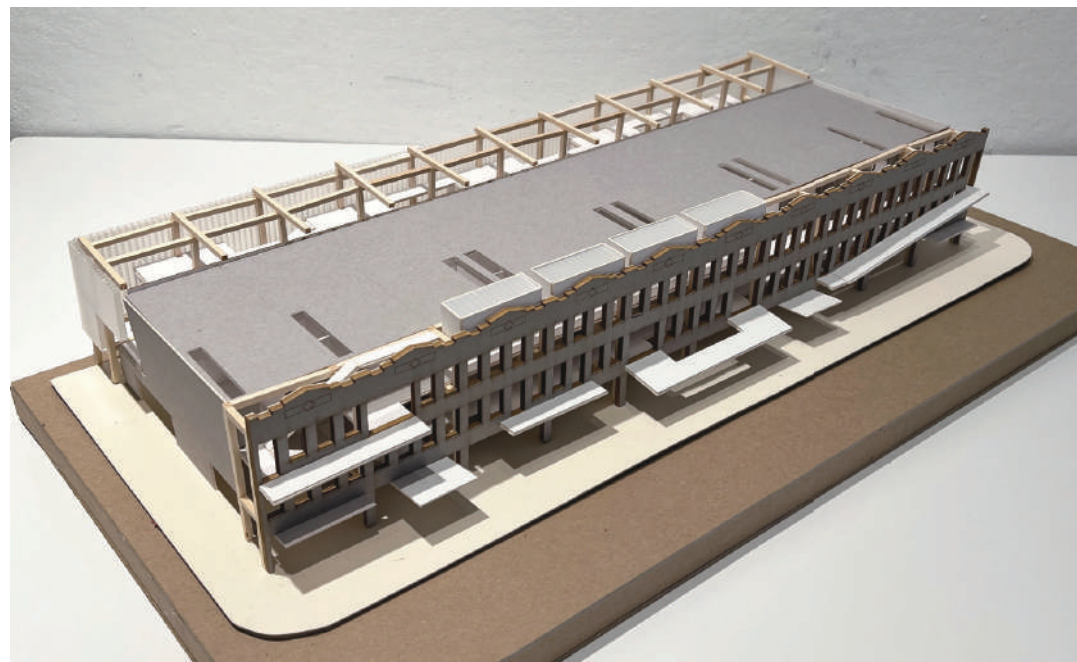
Sustainable Fashion Hub
Street-in-street Long Drawong





Sustainable Fashion Hub:

The hub's role is not only to integrate the garment industry chain of recycling, redesign, reproduction, and sales but also to use recycled clothing as a resource for building materials. Recycled clothing could be transformed into recycled fabrics and clothing bricks. The element of the movable interior wall and curtain systems allows the space to adjust and change according to different times and needs.

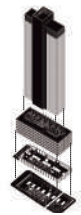


Street-in-street Model:

The front street is for commercial display, while the rear street is life- and production-oriented. Residents, designers, workers, and visitors can explore the entire space to the fullest extent. The same street has different attributes in different places. Users can freely navigate within the building, and the movable interior wall and curtain systems define intermediate spaces, creating a diverse sequence of spaces.

Absorptions

Adaptive Reuse of Office Building in Park Avenue



Academic Project

ADV IV STUDIO

Year: Summer Semester, 2024

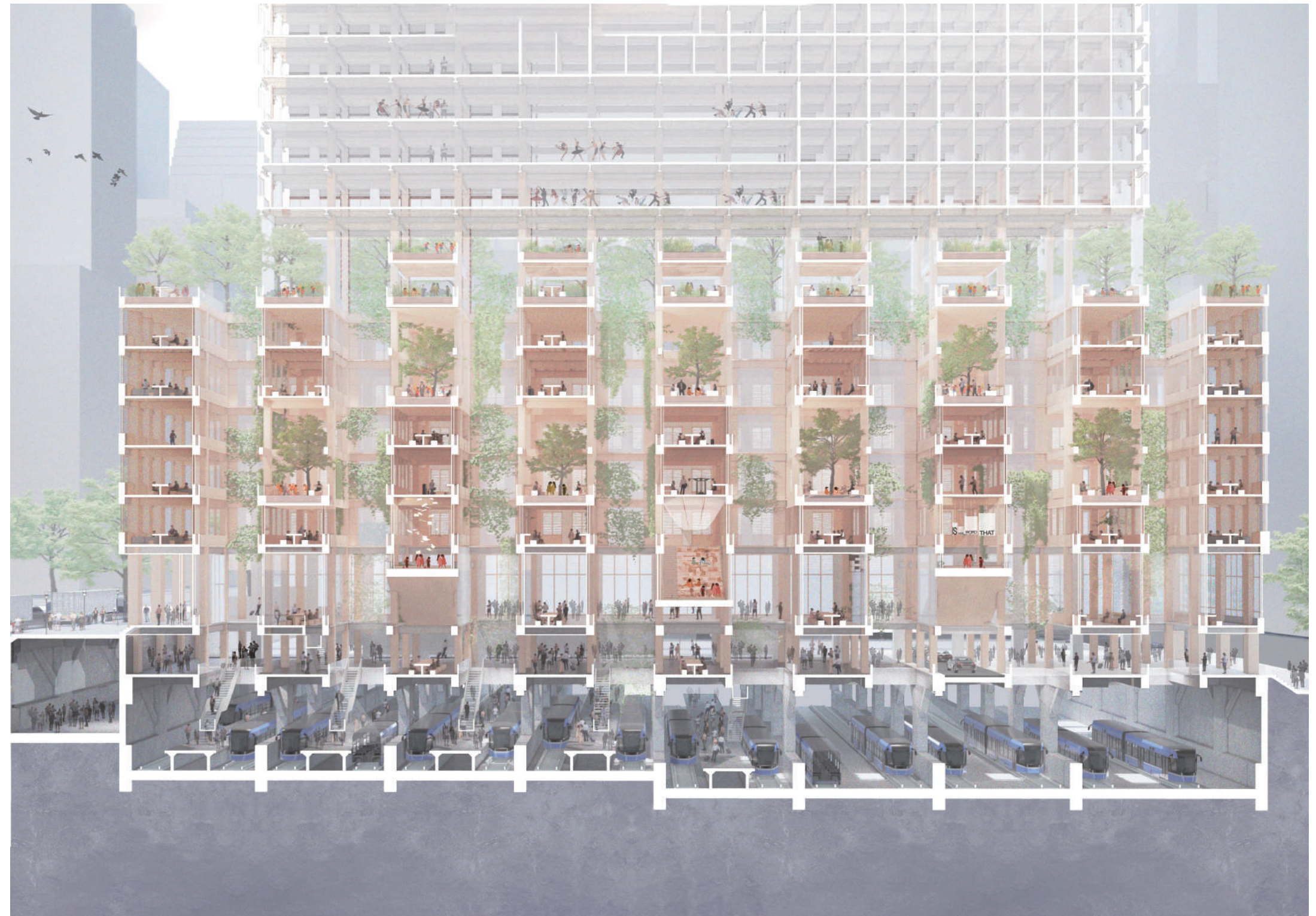
Location: Manhattan, New York

Team Project: Muhan Li, Yen-Chi Feng

Instructor: Sebastian Adamo

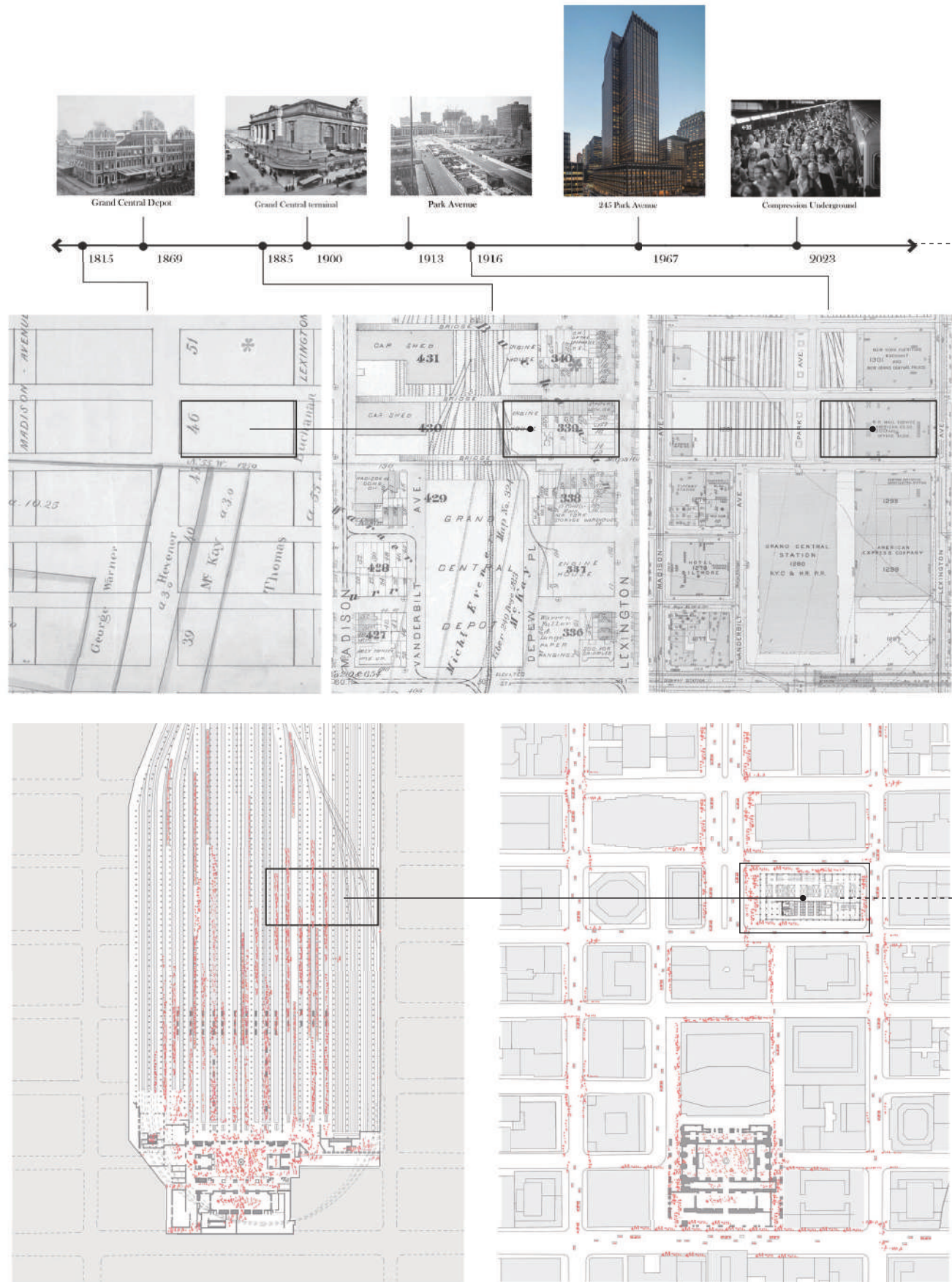
The "Absorptions" project explores the possibility of revitalizing unused office buildings in Manhattan. It envisions attracting the bustling crowds from the underground railroad system below the 245 Park Avenue into the vacant spaces above, aiming to relieve the traffic congestion and bring vitality back to the building.

On an urban scale, the project is viewed as an extension of Grand Central Terminal, integrating the underground railroad system with various ground-level transportation networks to alleviate the crowd surge and traffic jams. From the architectural perspective, the design incorporates sequential void spaces, vertical circulations, multi-purpose areas, and semi-outdoor courtyards, bringing natural light and air into the building and offering users spaces for socializing and rest, easing the stress of daily commutes.



Park Avenue 245

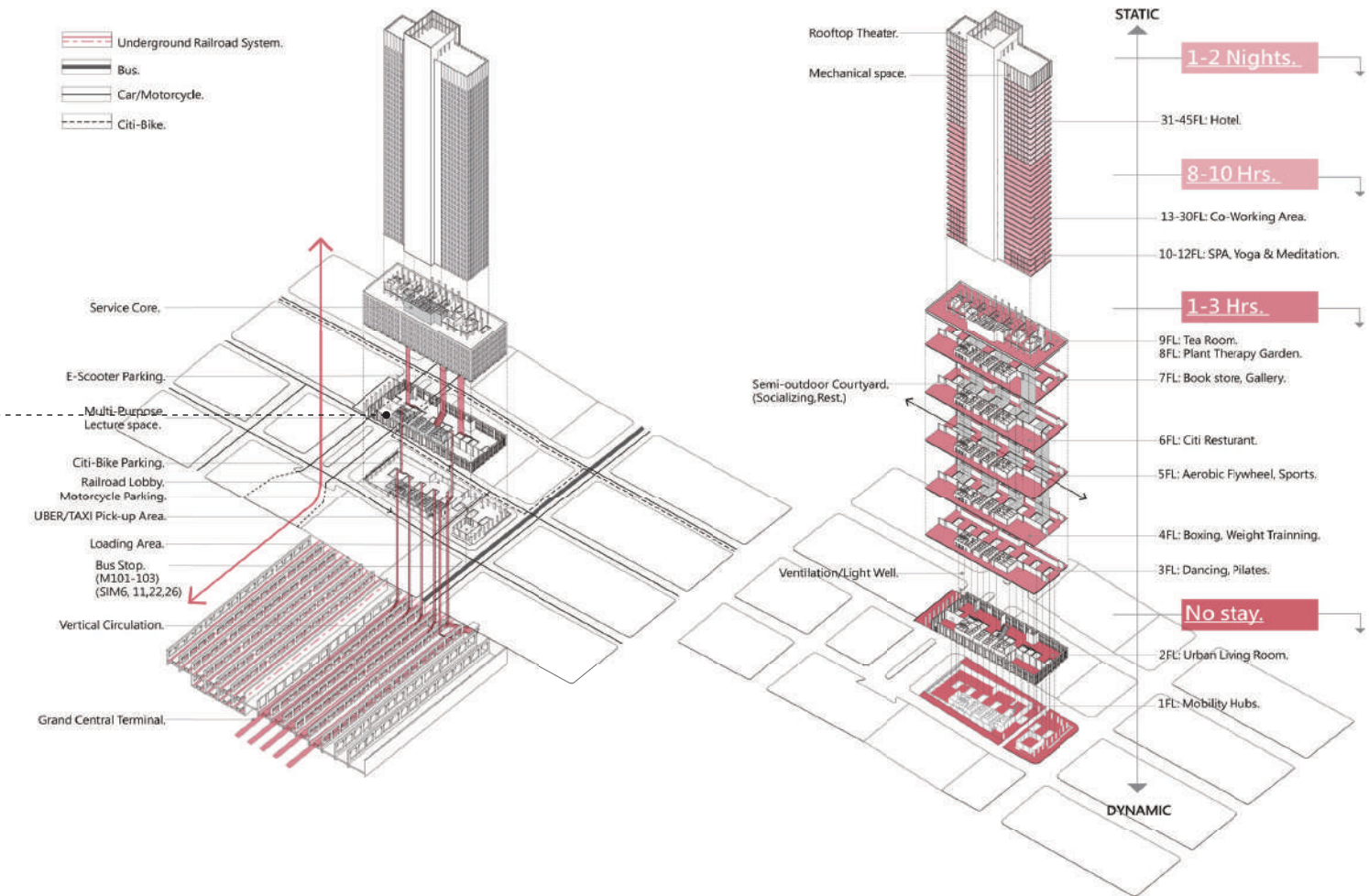
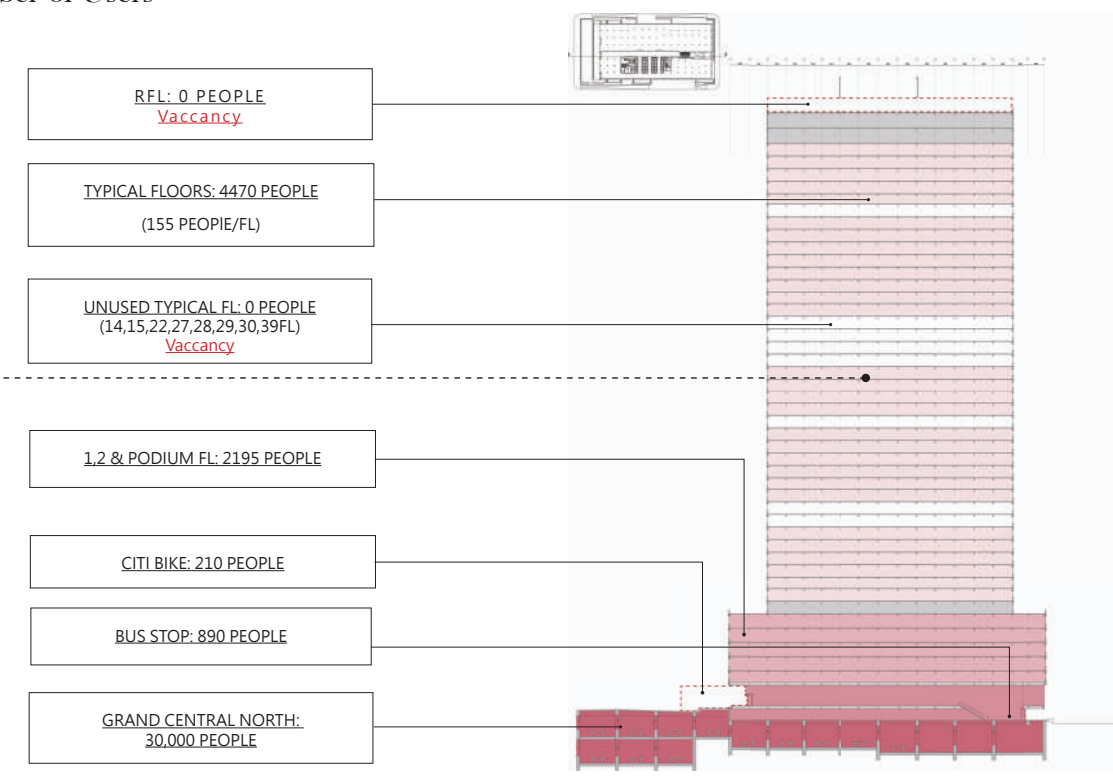
The relationship with the Grand Central Terminal



The mobility hub attracts crowds from the underground railway system into the above buildings. This will not only ease the congestion on the railroad platforms but also revitalize unused office floors.system.

Current Status of the Building:

Estimated Number of Users

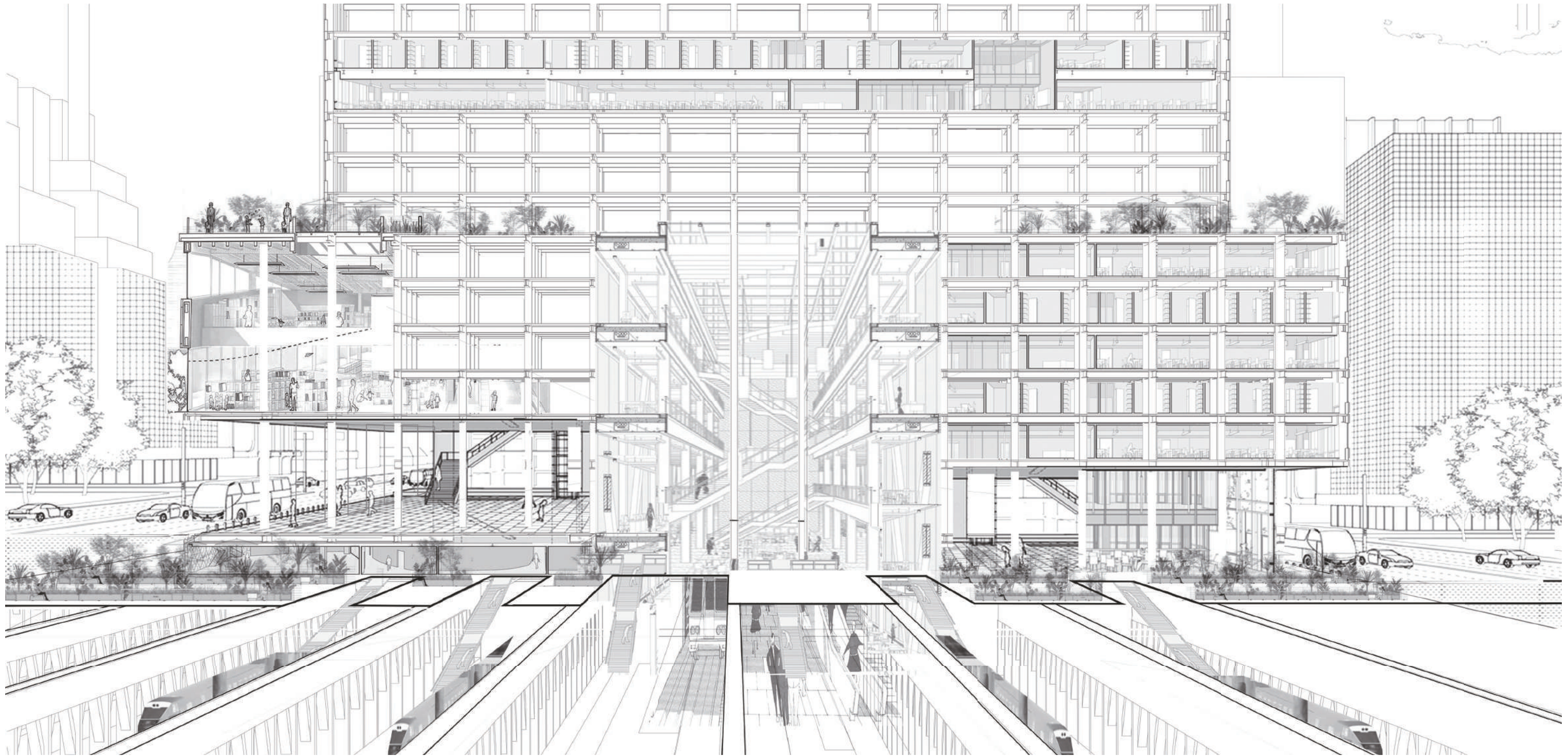


Mobility Hub:

Commuters can access various transport options on the first and second floors in a short period, making it easier to travel to different destinations and reducing the crowd surge.

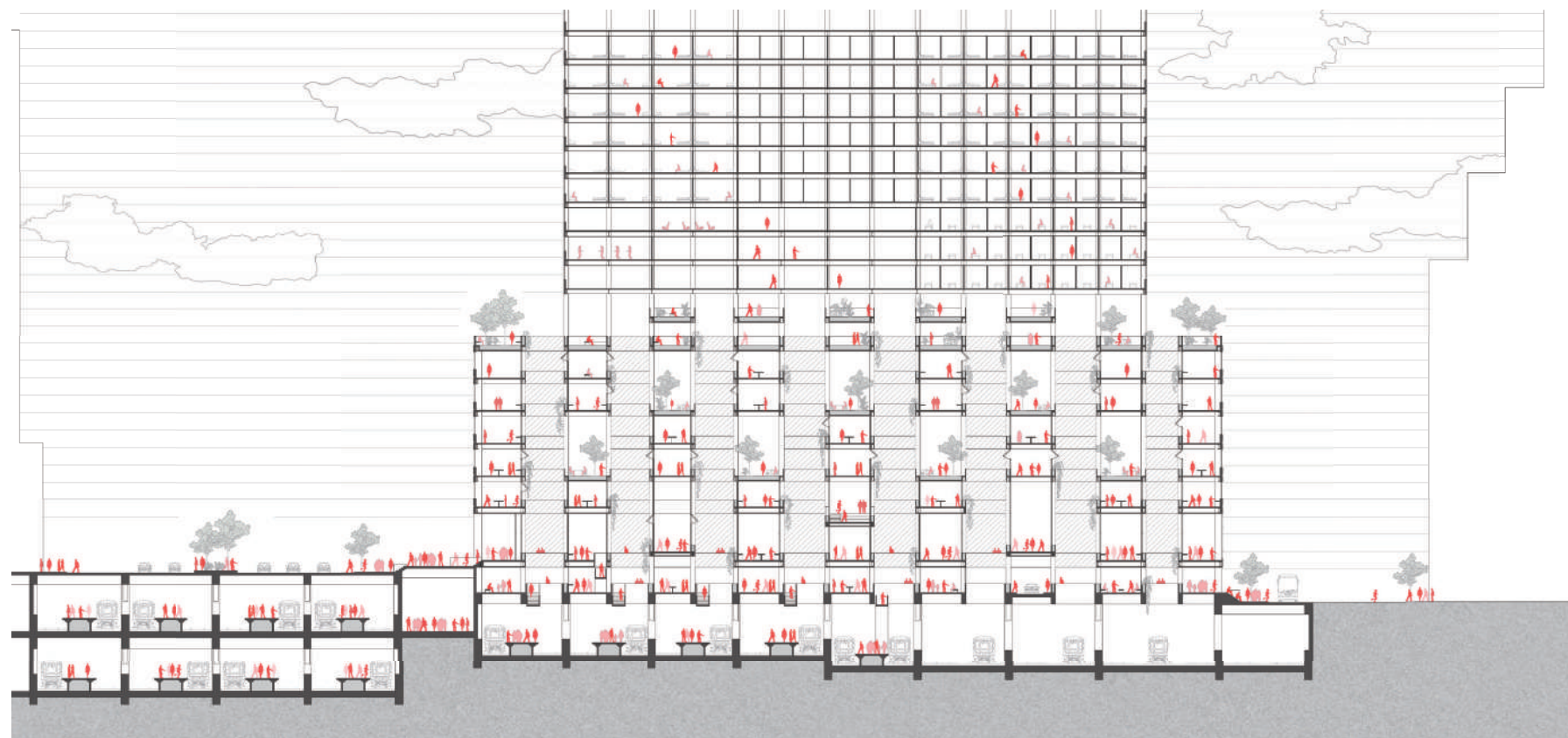
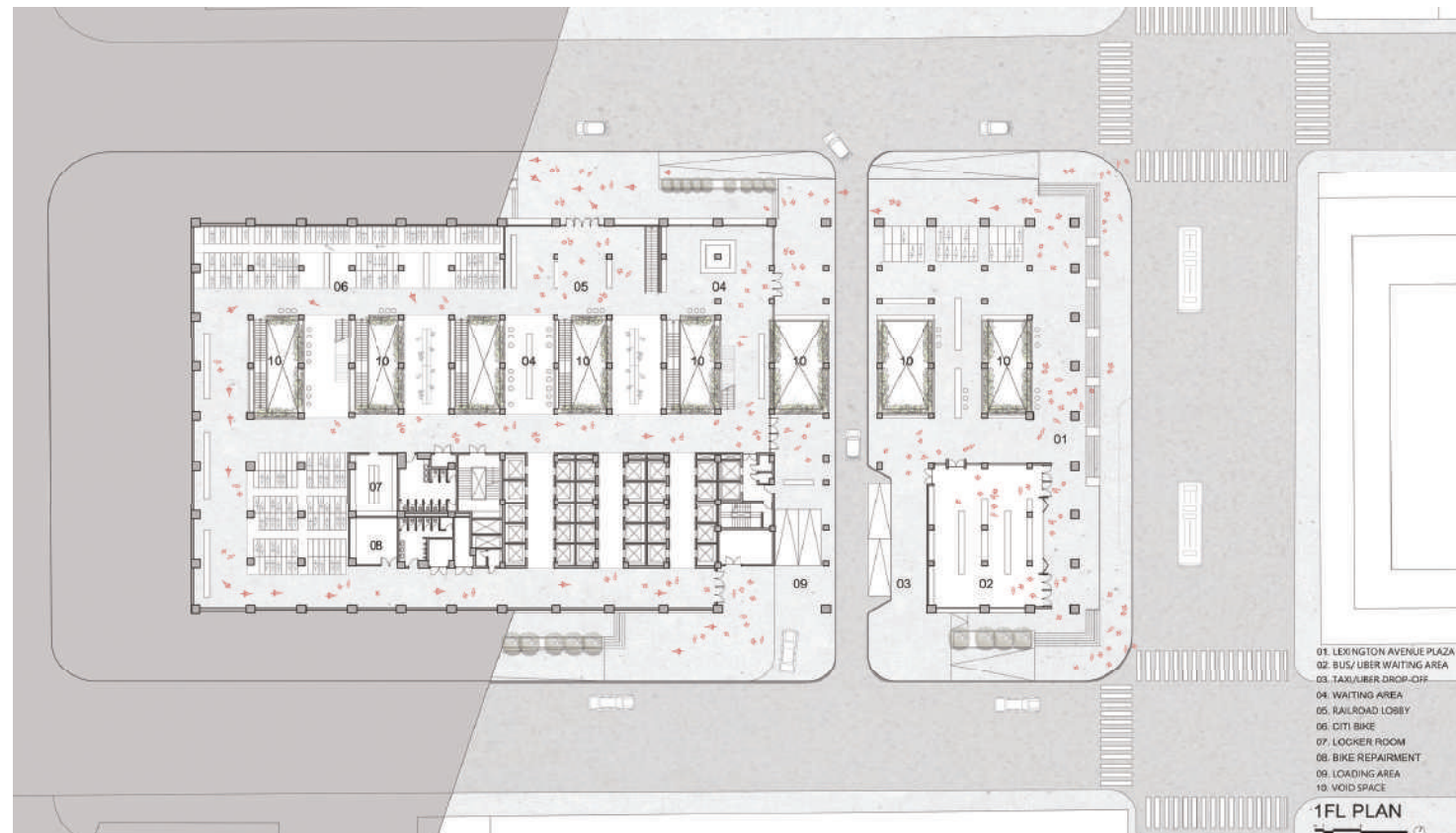
Stress-free Fitness Center:

A stress-free fitness center is created where commuters and office workers can relieve stress from commuting and daily life.



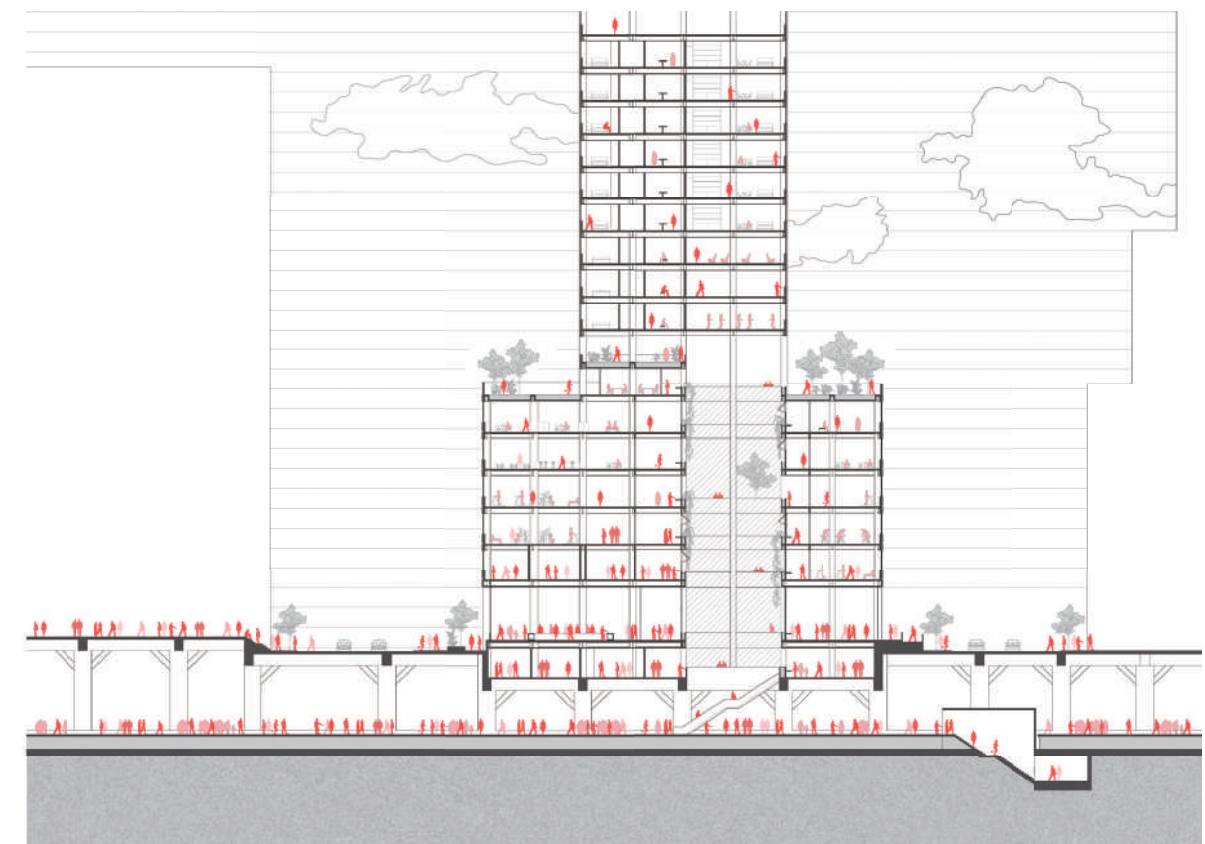
Collage of Mobility Hub: Vascular Bundle Structure of plants

A structure helps plants absorb and transport nutrients and water from the roots, supporting the plant's growth and functioning. This process, which includes solar, air, temperature, and water balance, is passive and requires no energy from the plant. Therefore, in this case, we aim to utilize this mechanism to explore a way to redistribute people's density from the bottom up. This is our vision for the future: exploring the possibility of bringing more vitality and energy back to 245 Park Avenue and improving the city's congested transportation system.



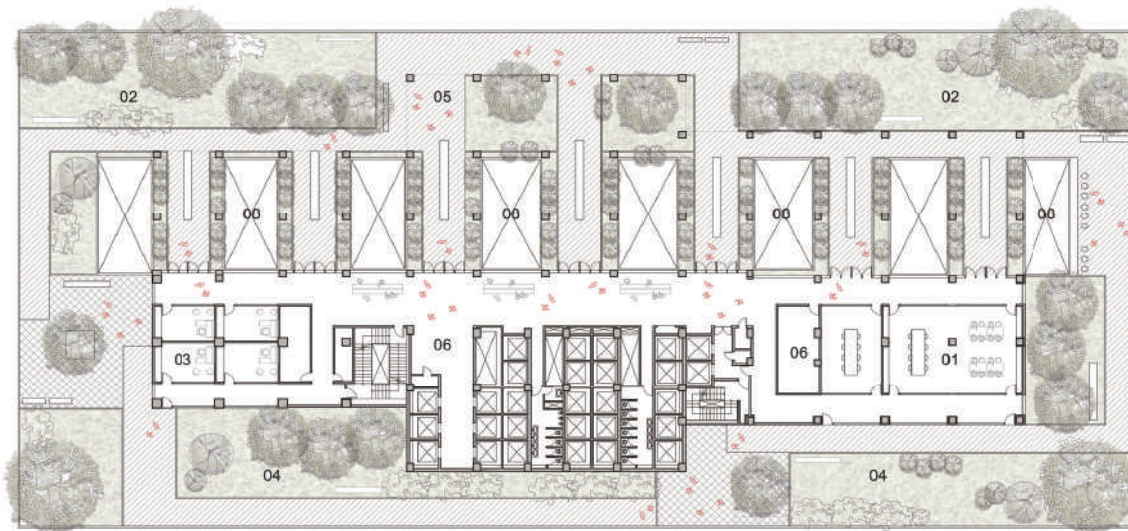
MOBILITY HUB:

Vertically, a sequential void spaces aligned with the existing building's structural system, connecting the underground railway and podium floors. This integrates with the vertical circulation and allows natural wind and light to enter the building, solving problems such as heat and noise issues brought by the trains.



Vascular Bundle Strategy:

Focus on integrating multiple transport systems, including the railway lobby, bus stops, UBER and taxi drop-off area, CITI-BIKE, and motorcycle parking lots, to provide commuters quick access to different destinations.



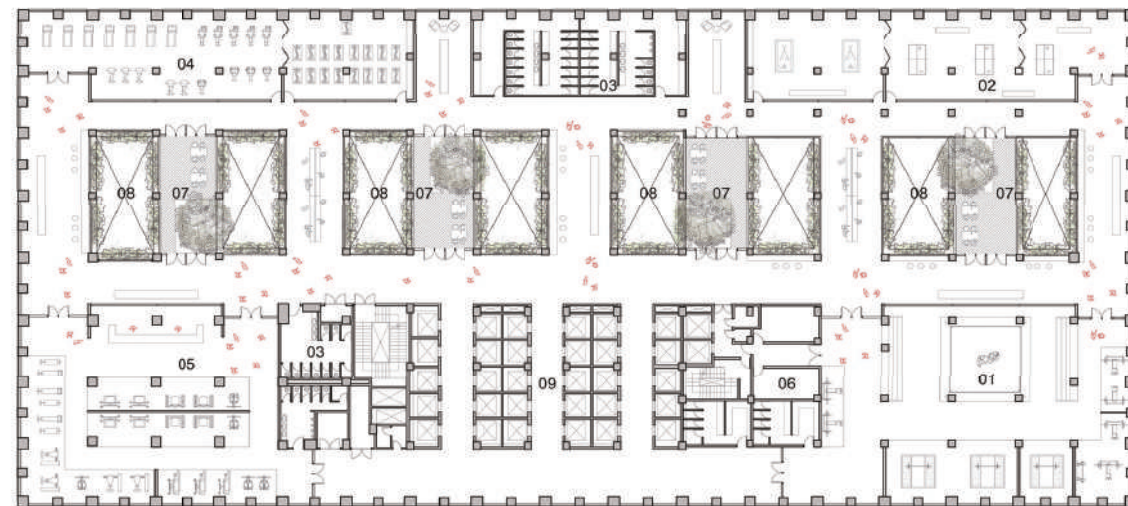
- 01. DISCUSSION ROOM
- 02. PLANT THERAPY
- 03. MENTAL CONSULTATION ROOM
- 04. PET GARDEN
- 05. SEMI-OUTDOOR CAFE/ READING
- 06. STORAGE
- 07. SERVICE CORE
- 08. VOID SPACE

8FL PLAN



- 01. SINGLE ROOM
- 02. DOUBLE ROOM
- 03. RESTAURANT / CAFE
- 04. LOBBY
- 05. HOTEL CENTER
- 06. STORAGE
- 07. SERVICE CORE
- 08. KITCHEN

39FL PLAN



- 01. BOXING, WEIGHT TRAINING
- 02. TABLE TENNIS, SNOOKER
- 03. LOCKER ROOM
- 04. FLYWHEEL
- 05. SPORTS CENTER COUNTER
- 06. STORAGE
- 07. SEMI-OUTDOOR COURTYARD
- 08. VOID SPACE
- 09. SERVICE CORE

3FL PLAN

Stress-free Fitness Center:

The podium floor is designed for stress relief. It includes different sports, restaurants, galleries, and plant therapy gardens. The floor features semi-outdoor courtyards and atrium spaces, ideal for one—to three-hour stays.

Typical Floors:

Compact hotel units designed to attract business people for long-distance business travel, offering longer stays of one to two nights.



- 01. SPA/ MASSAGE
- 02. RECOVERY AREA
- 03. LOCKER ROOM
- 04. YOGA/ MEDITATION
- 05. SPA/YOGA LOBBY/ COUNTER
- 06. SERVICE CORE

29FL PLAN

Self Portrait, Poster, Font Design

Digital Graphic & Typeface design

Academic Project

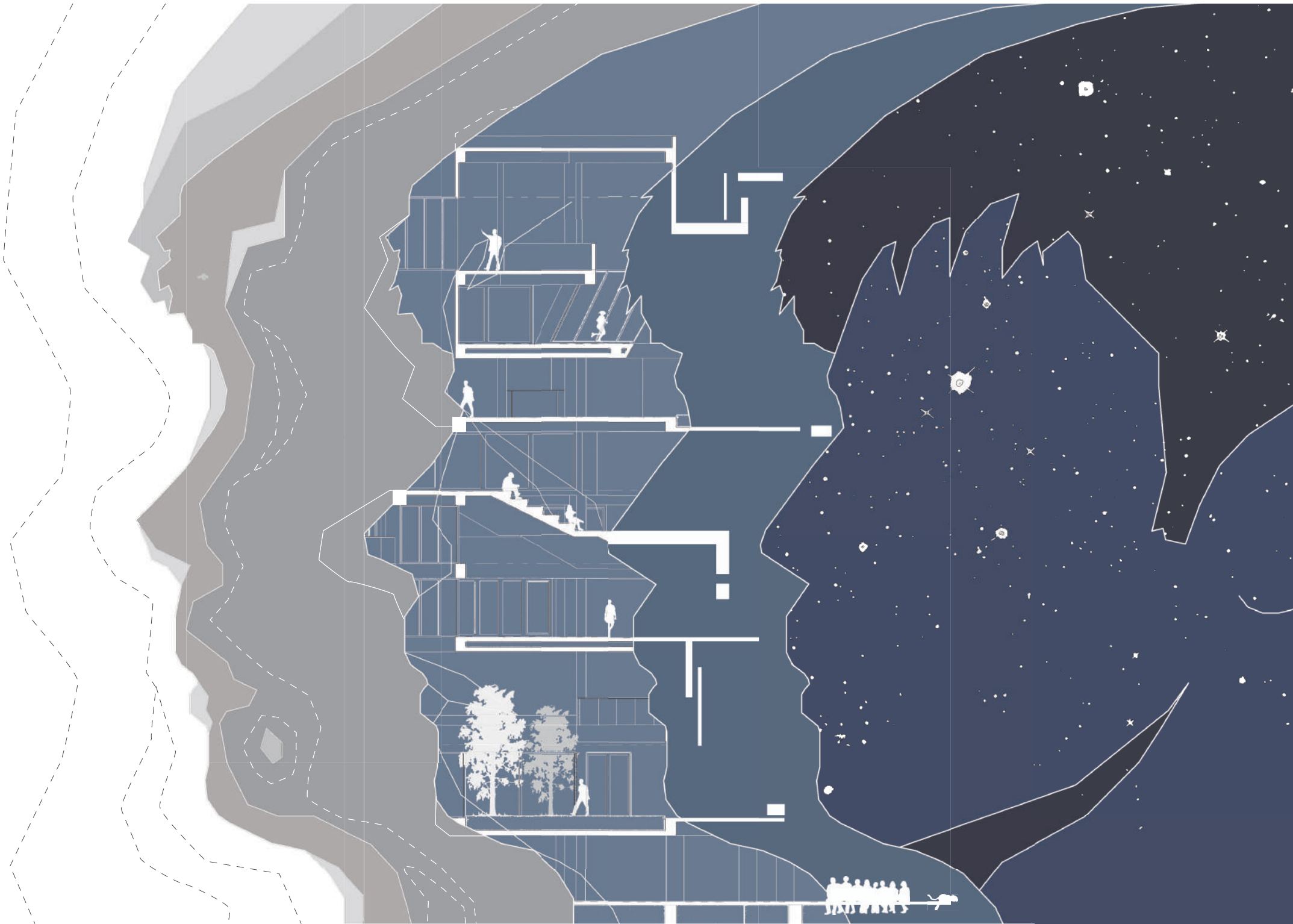
Multigraphics and Representation

Year: Spring Semester, 2025

Type: Individual Work

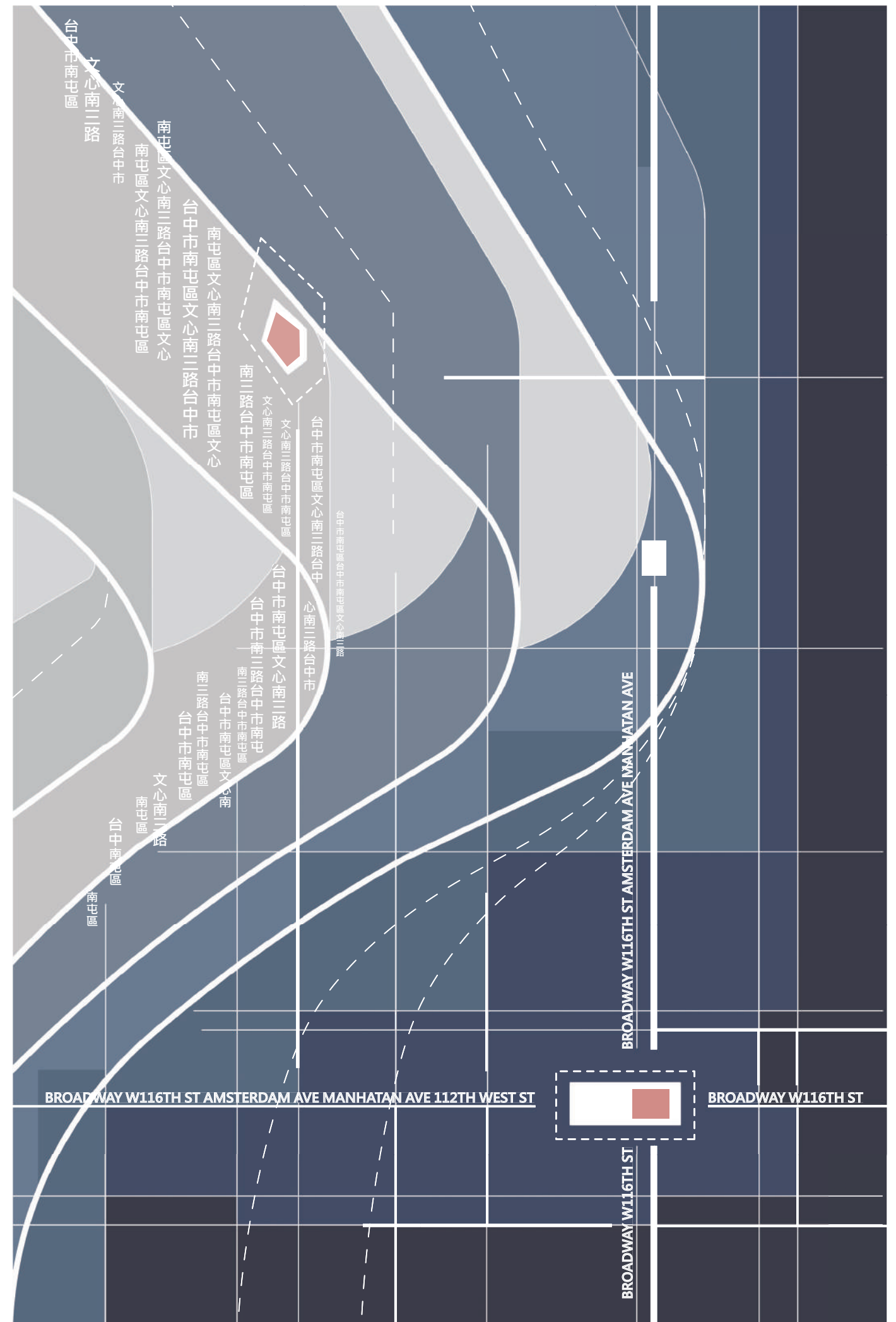
Instructor: Wael Morcos

The assignment focuses on merging abstract and realistic narrative styles. It intertwines personal life experiences, thoughts on architectural design, and the subconscious across different domains. It starts with an objective description of my hometown background, architectural education, and practical experiences, followed by a subjective depiction of design inspiration and personality. Finally, it represents my subconscious and my pursuit of the essence of life, forming a continuous narrative and exploration process. Through this exercise, I temporarily detach myself from the traditional architectural education system, adopting a perspective accommodating subjective and objective elements. I hope to see the world from a more flexible and diverse perspective.



Poster Design_02

The poster design_02 seeks to examine the gaps between self-identity in different cultural backgrounds, with an internal struggle of constantly switching, adjusting, and adapting between these two identities. From the essence of life, these two seemingly conflicting opposites contain a subtle harmony. On the other hand, through the assignment, learning to see things from a broader and more flexible perspective among chaotic thoughts and emotions, finding the possibility of balance between the two.



A B C D E F G H I
J K L M N O P Q R
S T U V W X Y Z

A B C D E F G H I
J K L M N O P Q R
S T U V W X Y Z

A B C D E F G H I
J K L M N O P Q R
S T U V W X Y Z

Font Design

This font creation aims to be suitable for article titles and content in design-related fields, striving for a typeface that lies between formal and informal, rational and emotional. Therefore, the design inspiration comes from the modernist architecture that emerged in the 20th century, following the design principle of "form follows function" advocated by architect Louis Sullivan. It eliminates ornate and unnecessary decorative elements, focusing on a concept that combines simplicity and practicality in typeface design. Simple geometric lines enhance and outline the characteristics of different English letters, ensuring that the font can be easily recognized by readers and clearly printed by machines, thus avoiding the issues of blurriness and difficulty in identification.

STRAY BIRDS OF SUMMER COME
TO MY WINDOW TO SING AND
FLY AWAY
AND YELLOW LEAVES OF AUTUMN
WHICH HAVE NO SONGS FLUTTER
AND FALL THERE WITH A SIGN

O TROUPE OF LITTLE VAGRANS
OF THE WORLD LEAVE YOUR
FOOTPRINTS IN MY WORDS

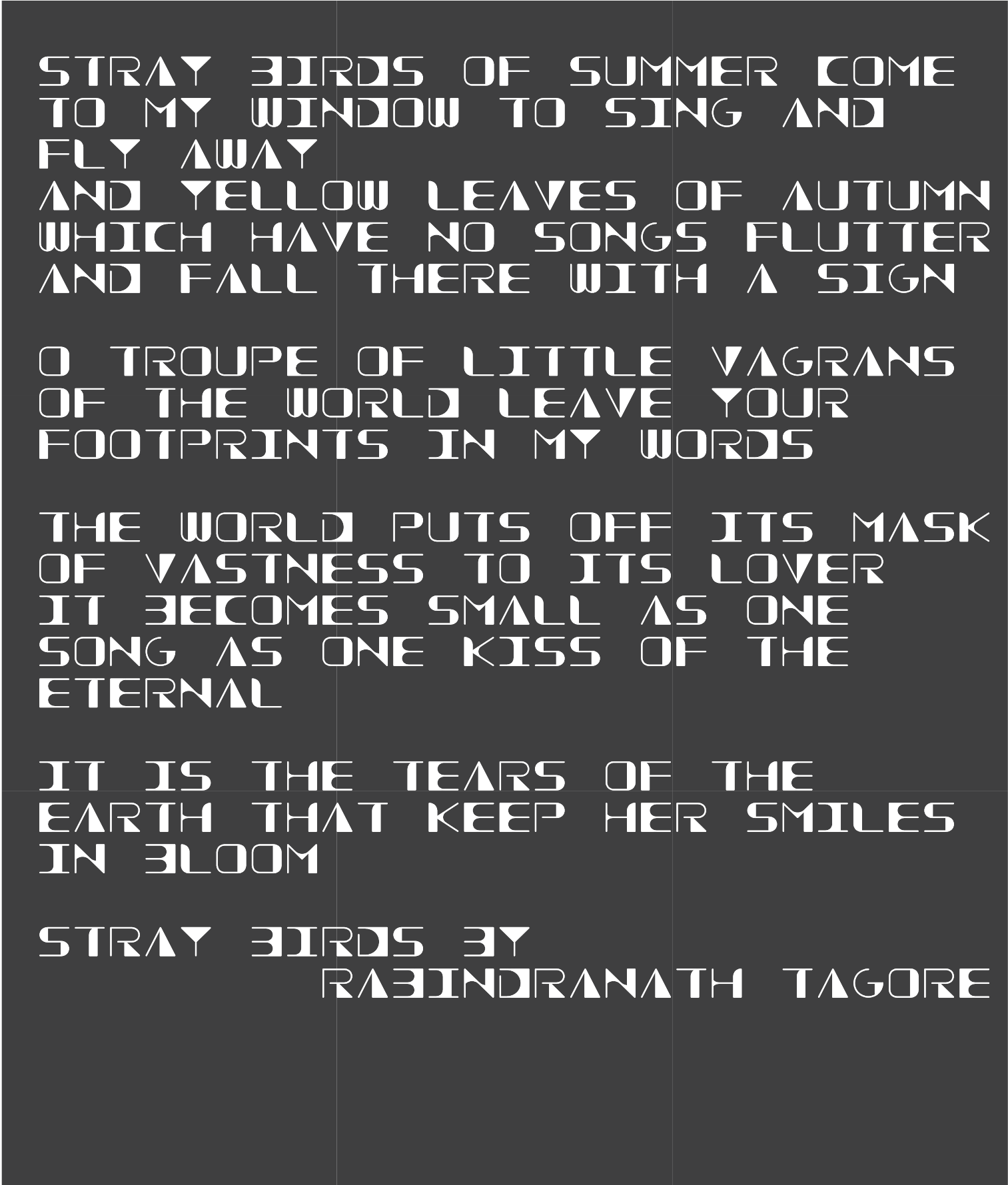
THE WORLD PUTS OFF ITS MASK
OF VASTNESS TO ITS LOVER
IT BECOMES SMALL AS ONE
SONG AS ONE KISS OF THE
ETERNAL

IT IS THE TEARS OF THE
EARTH THAT KEEP HER SMILES
IN BLOOM

STRAY BIRDS BY
RABINDRANATH TAGORE

Font Design

To pursue a minimalist and clear design concept, the font creation strategy is based on a square framework, discarding irregular free curves and using only straight lines and arcs as design elements. It adheres to a rectangular grid system's vertical and horizontal lines and nodes, combining repetitive and similar design elements to create different English letters. In terms of design, the font creation focuses on the design of individual letters and emphasizes the harmony and dynamics presented in the combinations of different letters. Therefore, various line thicknesses and contrasts between straight and curved lines highlight each letter's uniqueness. Additionally, there is an attempt to present a dynamic sense of rhythm in the connections and transitions between letters and words, seeking the possibility of achieving a subtle balance between harmony and uniqueness. Finally, in terms of the visual presentation of the font, an attempt is made to extend this font form into distinct expressions, creating three different visual effects: pure geometric lines, filled colors, and black background with white text, to meet the designer's needs for selecting suitable font styles under different requirements, maximizing the design value of the font.

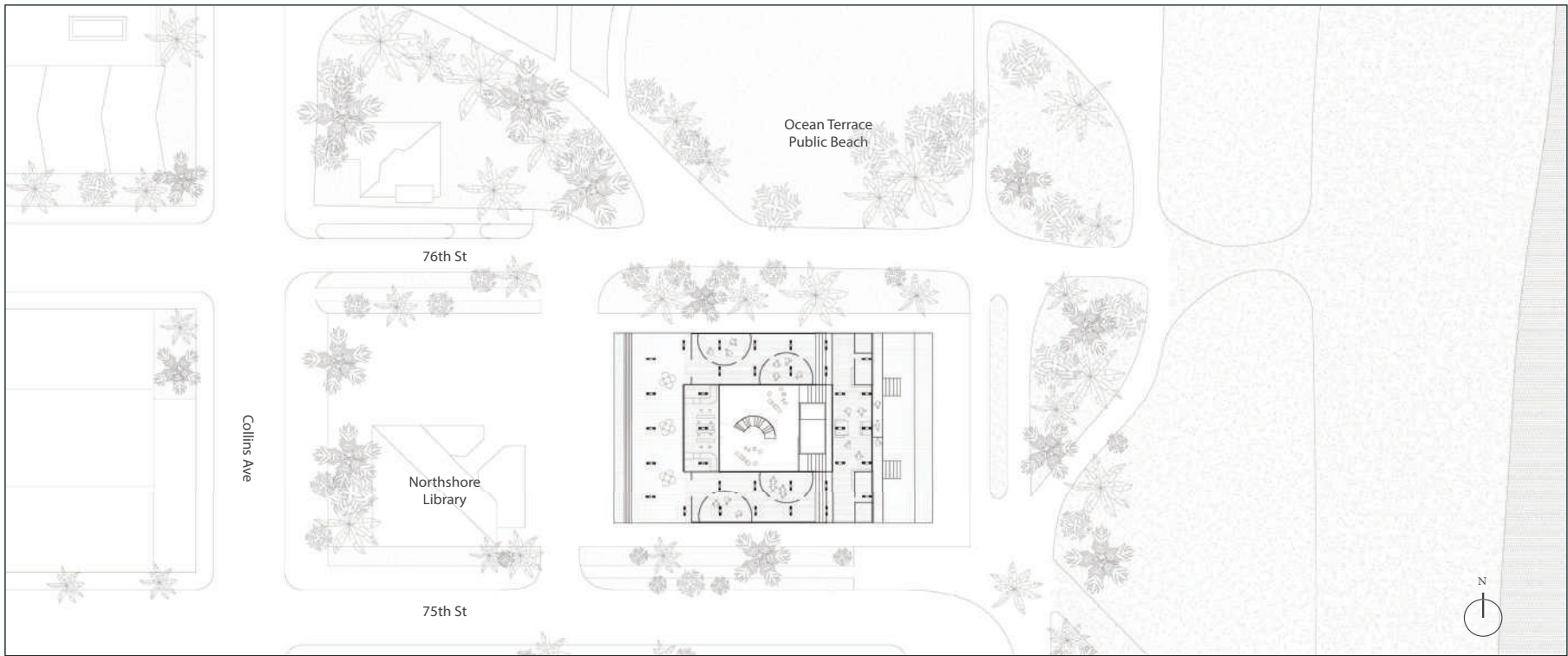
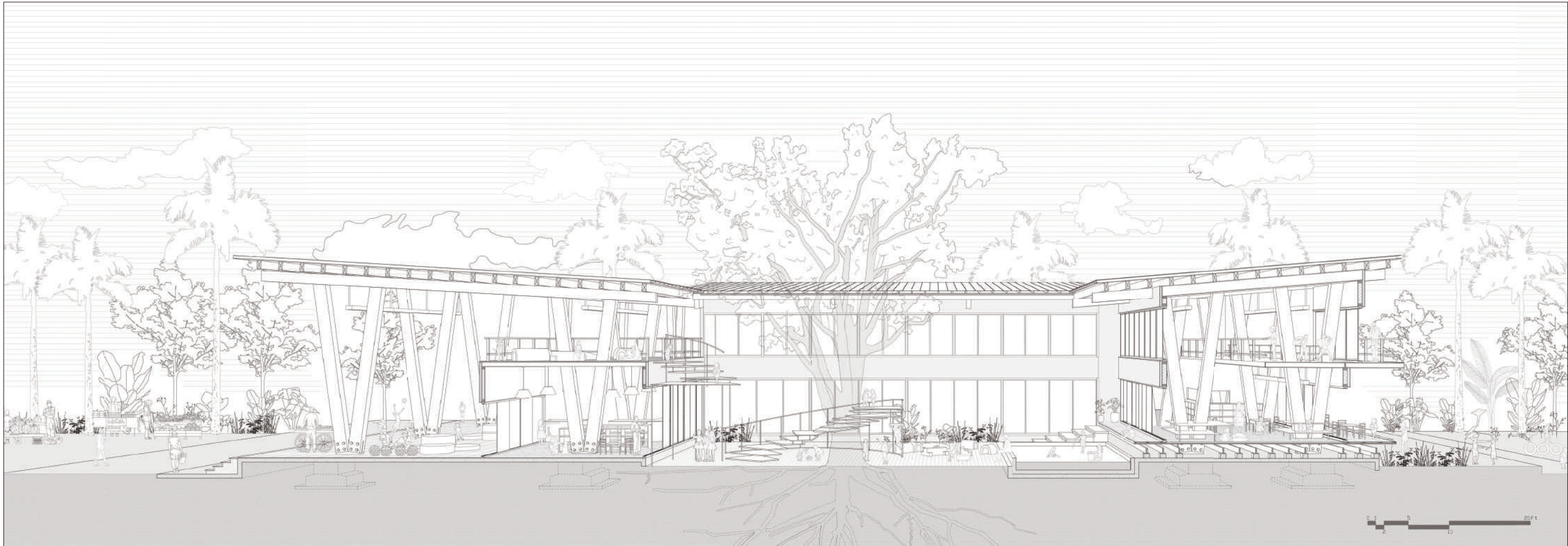


Courtyard Kindergarten

Children's Space Section Design

Academic Project

Designing space for children
Year: Spring Semester, 2025
Teamwork: Yemi Yan, Laurent Huang, Yen-Chi Feng
Instructor: Anna Knoell



Material Board



CLT



Wood Flooring Tiles



Corrugated Roof Panel



Composite Cladding



Polyurethane Rubber

The concept of intermediate spaces in kindergarten is proposed by envisioning the spatial arrangement, broadly categorizing these spaces into three levels, ranging from public to private and from dynamic to static, with the central courtyard area of the kindergarten being the primary focus of exploration.

Level One (Public/Dynamic): The entrance space of the kindergarten is a large canopy area that serves as a transition between urban and educational spaces, a drop-off zone for children, and a recreational area for them. On weekends, it transforms into a community farmer's market.

Level Two (Private/Dynamic): The central area features a tree courtyard, connected to a second-floor recreational space by semi-outdoor stairs. A children's sand play area is attached to the semi-outdoor flexible corridor on the right side of the courtyard.

Level Three (Private/Static): The classroom is flanked by movable transparent walls on both sides, which can be opened or closed depending on the time and needs. Floor-to-ceiling windows extend the view into the courtyard; through the vertical void space, the first and second levels are interconnected. The classroom mezzanine serves as a secret base for children to gaze out at the beach from the balcony.



Feng, Yen-Chi

Architecture Portfolio 2025