

ARCHITECTURE AS ALTRUISM

KWAMINA AKWA

A GRADUATE ARCHITECTURE PORTFOLIO
COLUMBIA UNIVERSITY GSAPP 25
MASTER OF ARCHITECTURE

CONTENTS

01. MULTI- GENERATIONAL FLUX

Broadway Stories | CORE I | FALL 2022

02. GUINEA PIG FEAR FACTOR | TRUST INTERMEDIARIES

Damage Controll | CORE II | SPRING 2023

03. BLOCK PARTY

States of Housing | Adaptive Reuse | CORE III | FALL 2023

04. RIZ-HOME

Reception | In Case Of Emergency | Contested Territories | ADVANCE IV | SPRING 2024

05. SACRED TURN

Hallowed Pathways | ADVANCE V | FALL 2024

06. 1: 1 FABRICATION

SPRING 2025

MULTI- GENERATIONAL FLUX | BROADWAY STORIES

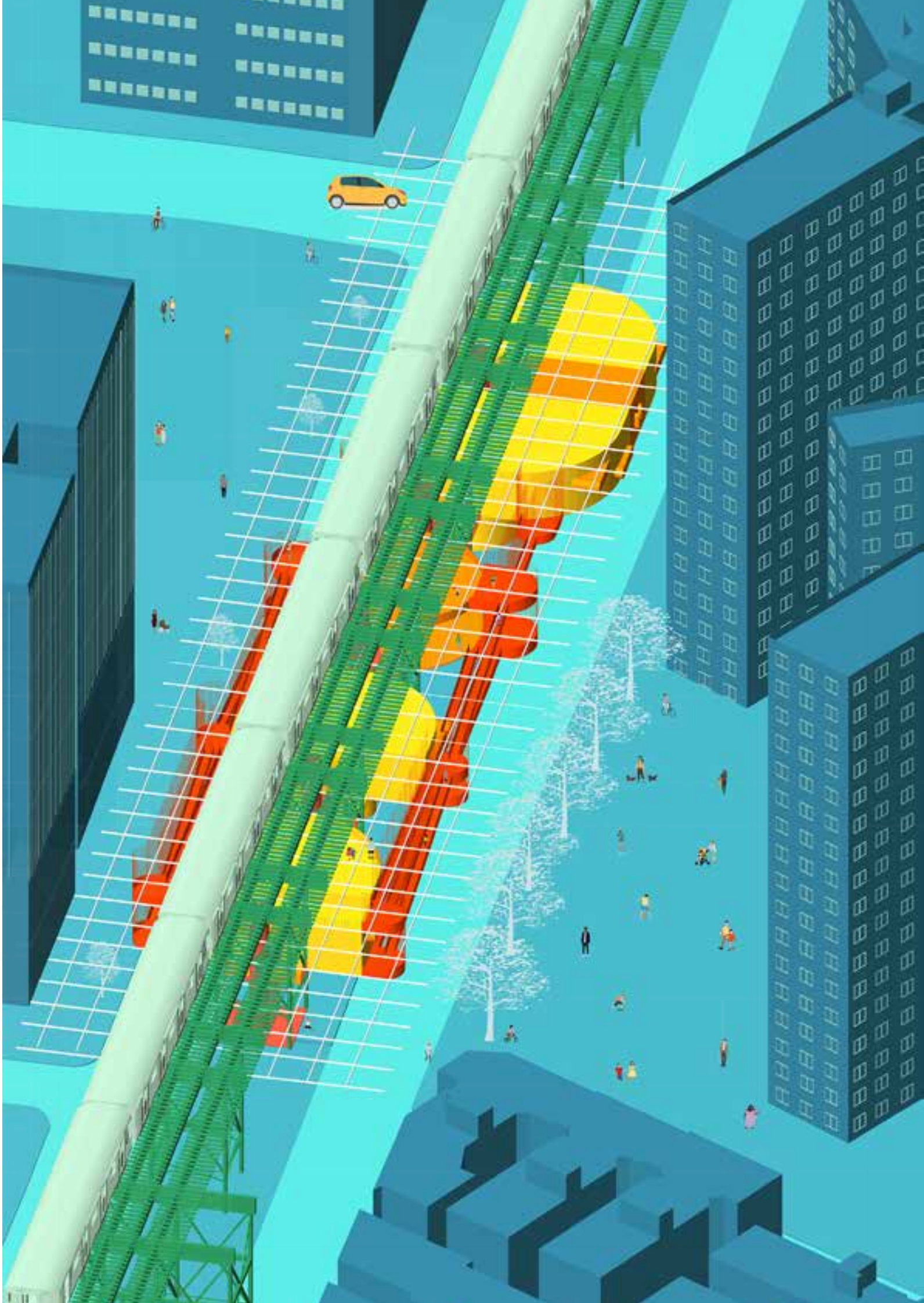
Our intervention seeks to forcefully occupy the voids of this rather austere and uninviting space to create transformative social spaces for the community. The permanence of the viaduct structure allows us to create an ecology of spaces with varying and interchangeable programs that will become a mainstay in the community and not a transient solution. In this bold attempt we return to examine what Harlem represents and how we can incorporate the ethos and culture of this community within our spaces. Harlem represents a rich history of culture, political movements, music, literature and art.

We envision that these spaces, though flexible in their programmatic structure will become cultural and social anchors to foster multi-generational bonding. This mentorship strategy will attempt to address different problems experienced by the youth by encouraging social interactions between the youth and an older population through shared activities in the performing arts, music, debates and fine art. The incorporation of intertwined and connecting ramps further encourages these very important social interactions and encounters, essentially promoting what we want to term multi-generational flux.

SEMESTER : **Core I | Fall 2022**

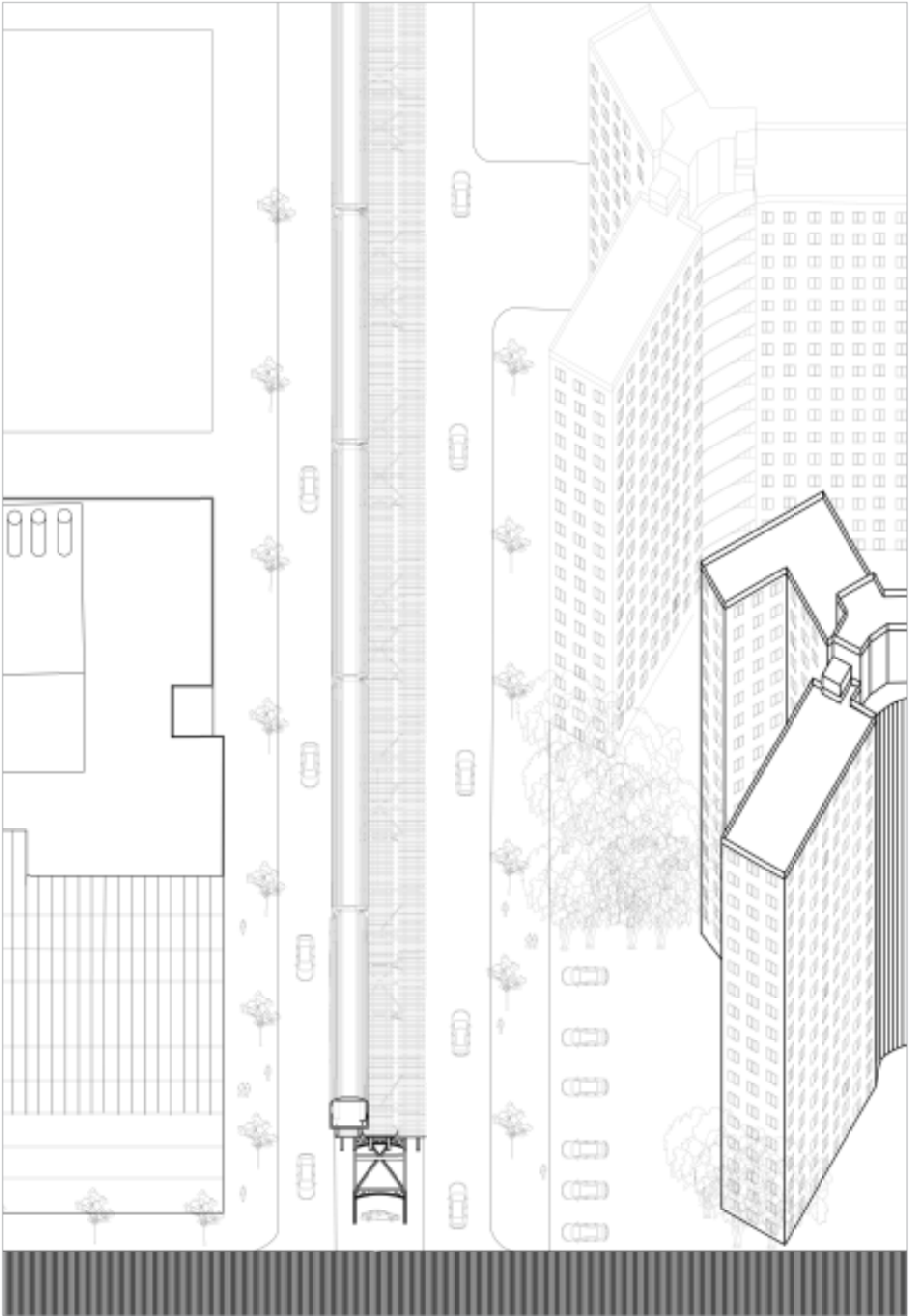
LOCATION: **Harlem, New York**

CRITIC : **Alessandro Orsini**

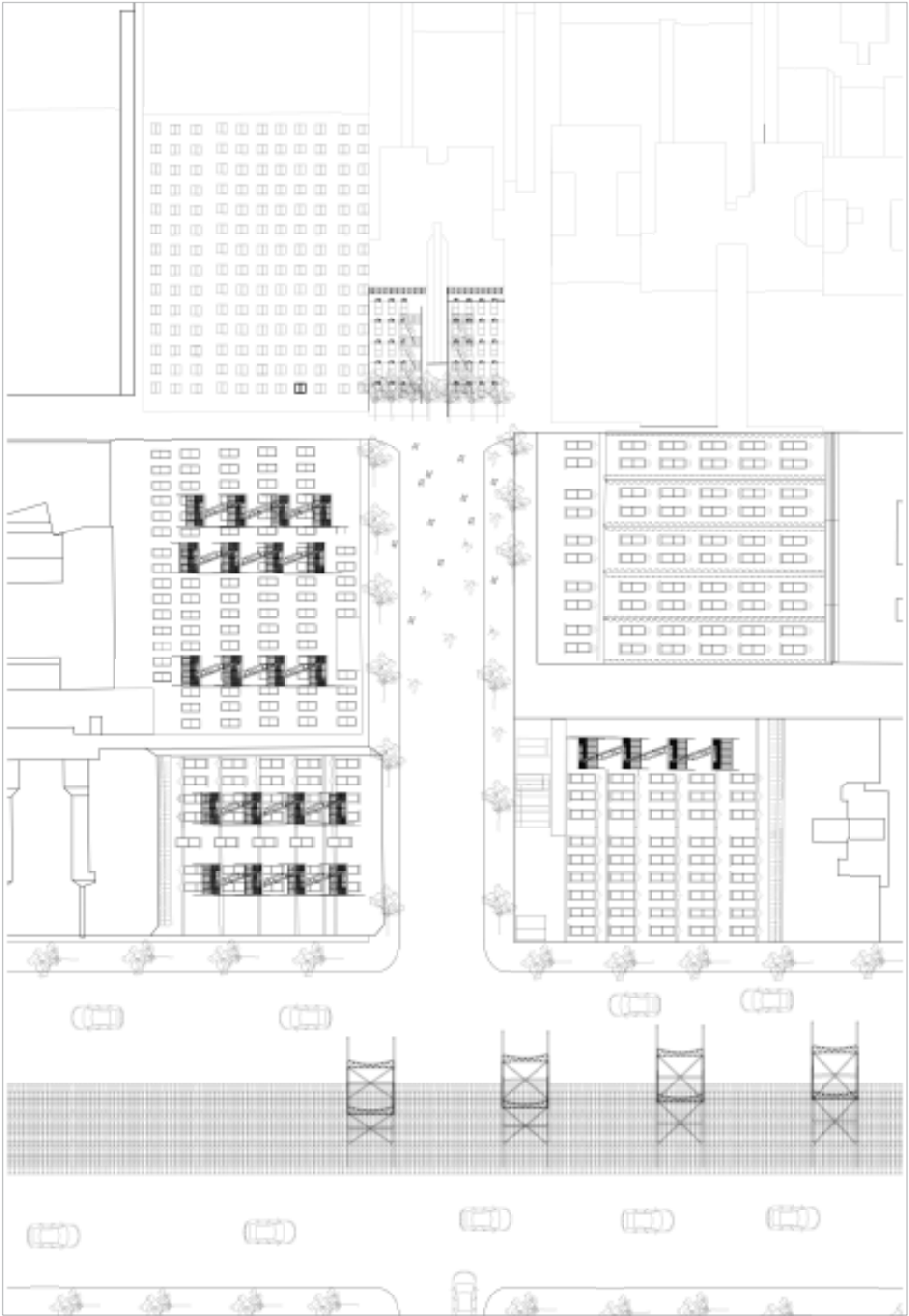


A stylized illustration of a Ferris wheel with yellow and orange cars against a blue sky with white clouds and a city skyline. The Ferris wheel has a central yellow structure with orange support beams. The cars are yellow and orange, with some having green accents. The background is a light blue sky with white clouds and a dark blue city skyline on the right.

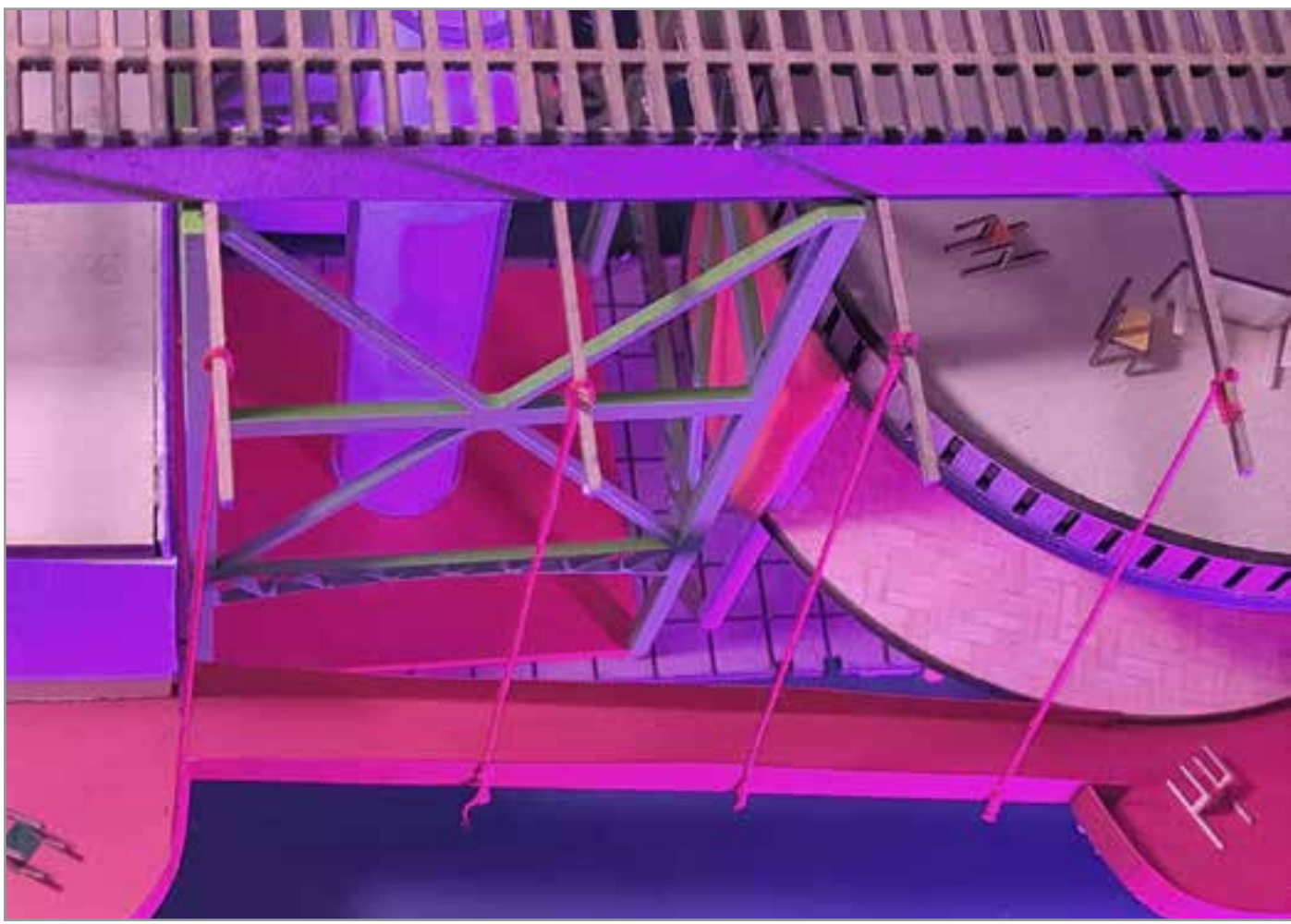
PLAN COLOR BLOCK



SECTION OBLIQUE



ELEVATION OBLIQUE



GUINEA PIG FEAR FACTOR | TRUST INTERMEDIARIES | DAMAGE CONTROL

The compounding effect of the legacies of the historical exploitation of minorities by the medical and healthcare industry has caused a phenomenon termed the Guinea Pig Fear factor . Minority communities have grown suspicious of the healthcare system and exhibit a reluctance to access medical care for fear of being experimented upon. This systematic build up of mistrust for the healthcare system results generally in very poor health outcomes within these minority groups.

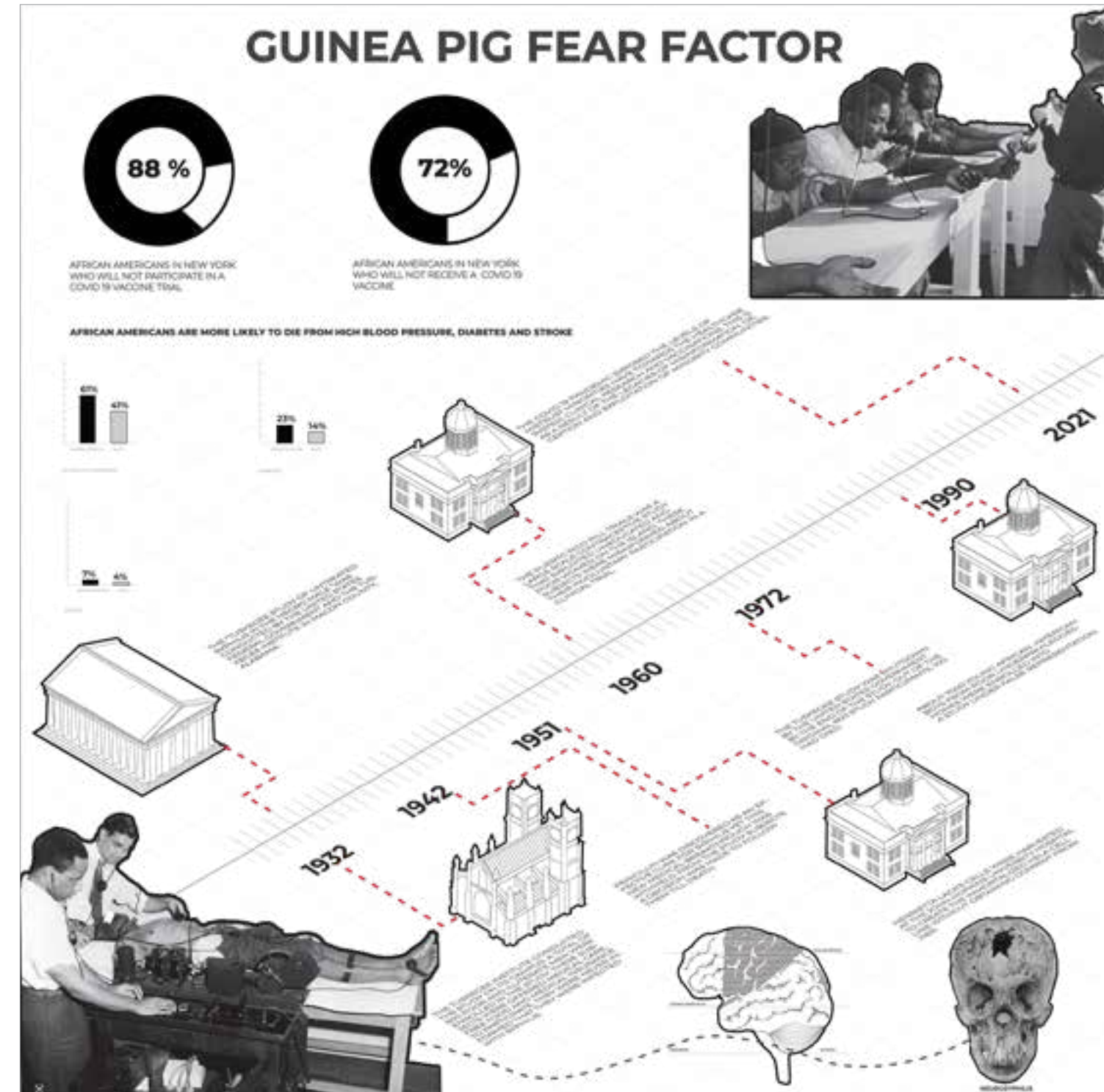
We are proposing as part of the solution to the issue of mistrust the decentralization of portions of the healthcare system by breaking it down into smaller manageable modules that can be deployed to underserved communities.

One of the modules revolves around the barber as a trusted member of the community with very strong relationships with his clientele. Our intervention seeks to leverage these existing relationships cultivated by barbers by employing them as intermediaries of trust between minority communities and the healthcare system. We are proposing a new medical typology where barbering shops are merged with medical treatment rooms to serve as primary care centers.

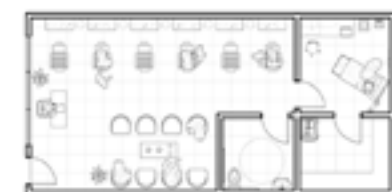
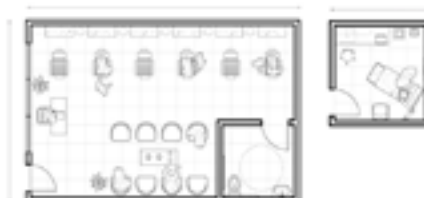
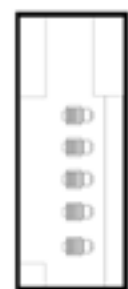
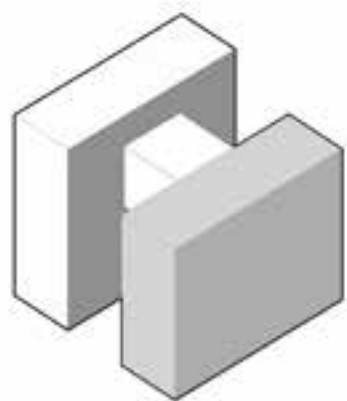
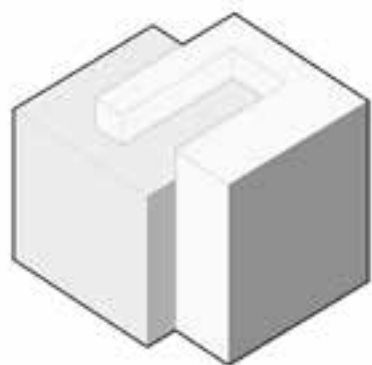
LOCATION: **Harlem, New York**

SEMESTER : **Core II | Spring 2023**

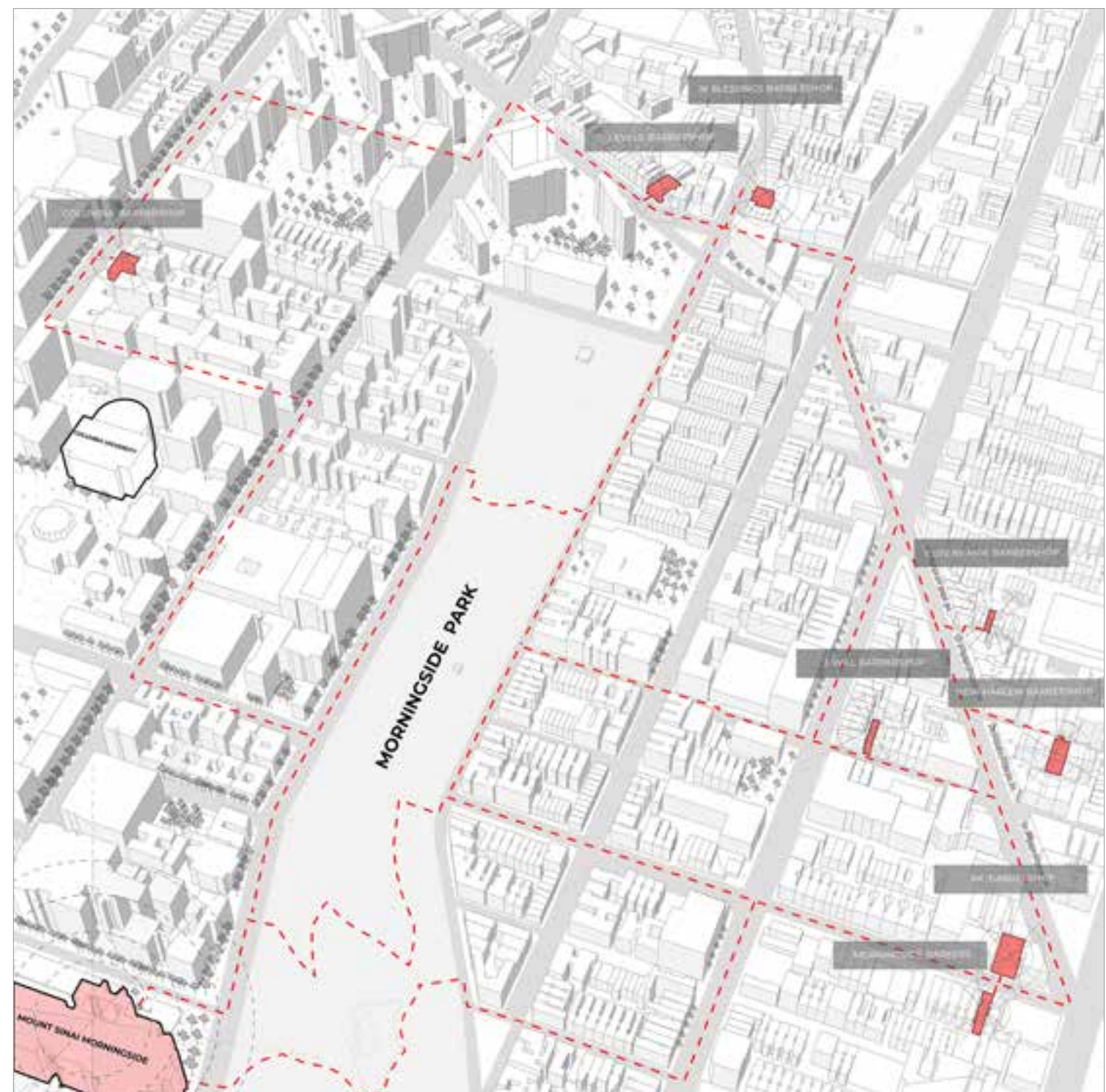
CRITIC : **Carlyle Fraser**



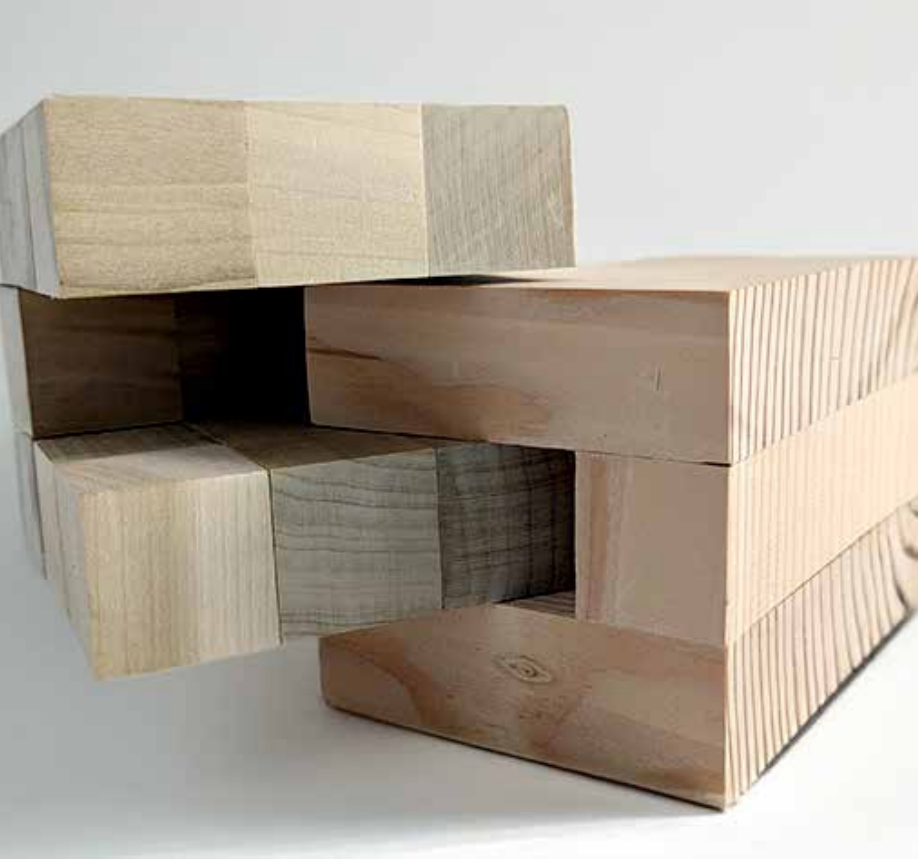
Our damage system investigates the medical mistrust of the healthcare system by minorities and the Tuskegee Study serves as the basis of our analysis. In 1932, the US government together with the Tuskegee Institute began a study to record the natural history of syphilis in black males. 600 poor and illiterate black men were enrolled in the study. When penicillin was discovered in 1942 to be an effective treatment for the disease, that information was withheld from the participants. The subjects were followed to death and about a 100 participants died as a result.

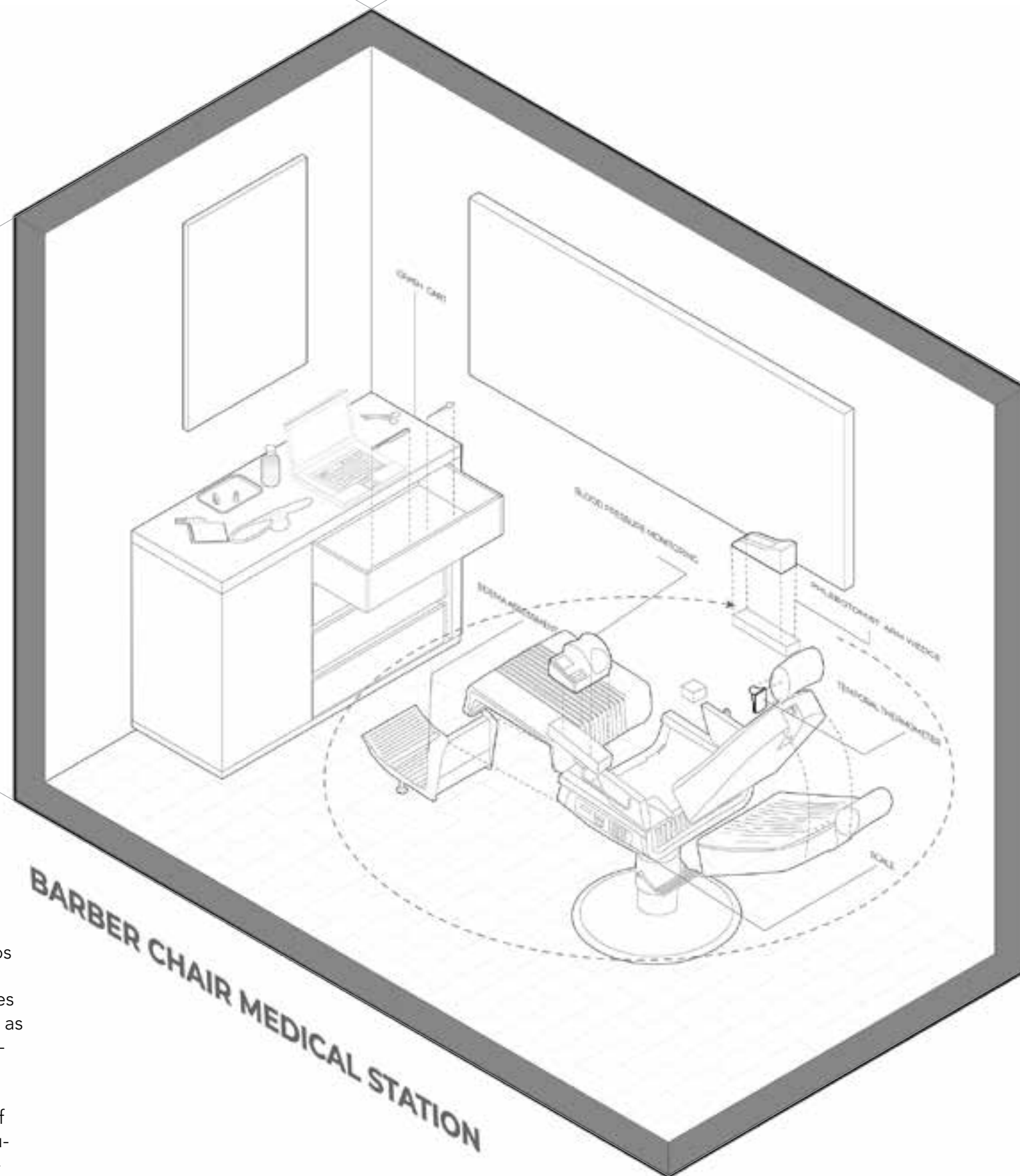


GUINEA PIG FEAR FACTOR | TRUST INTERMEDIARIES | DAMAGE CONTROL | CORE II | SPRING 2023



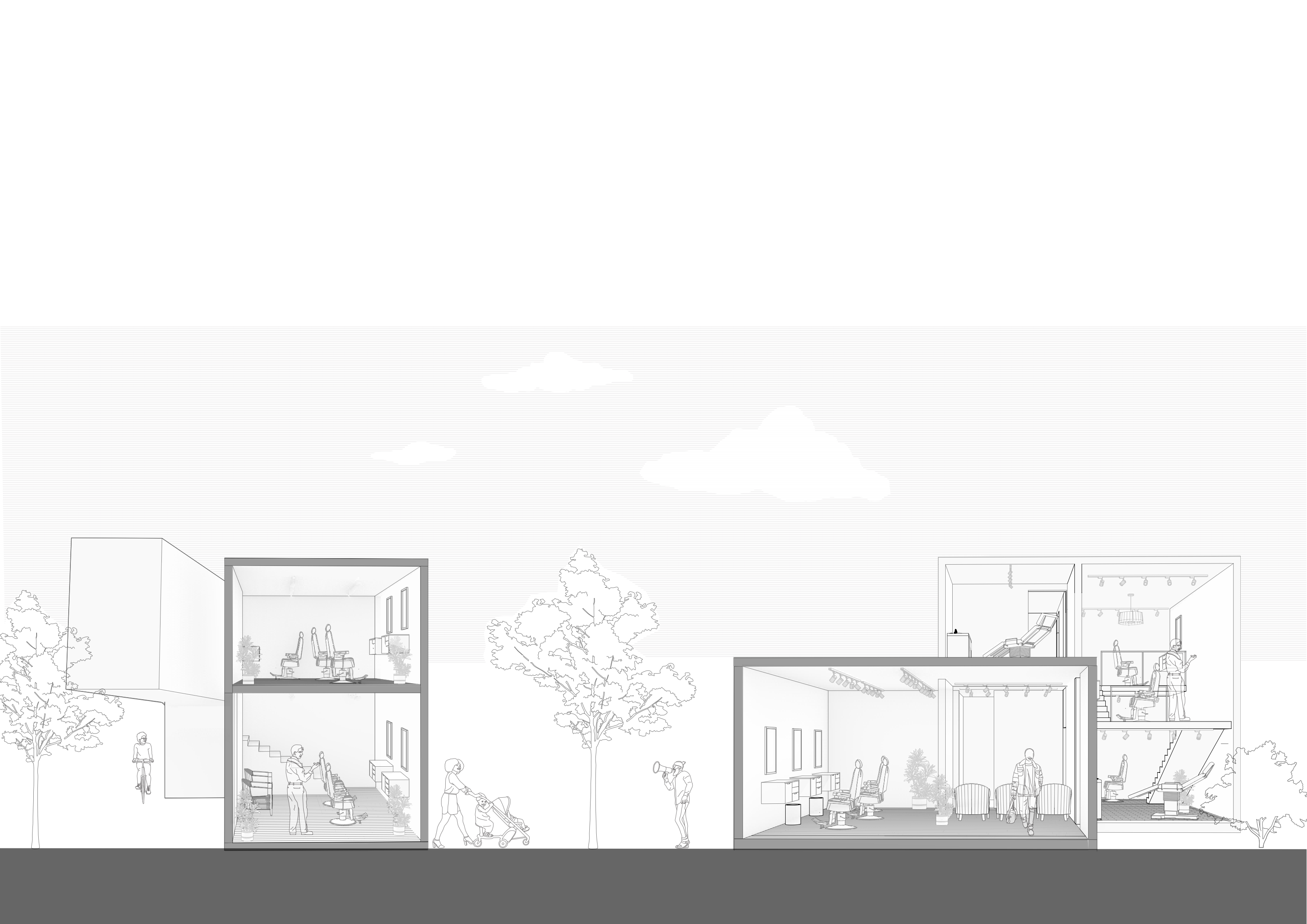
Decentralized healthcare system within a hub and spoke framework





Our intervention will concentrate on barbering shops and beauty salons. Historically, barbers, then known as barber-surgeons, provided limited medical services like leeching and tooth extraction. They were known as doctors of the short robe while formally trained doctors were called doctors of the long robe.

Why these institutions? Trust forms the foundation of their operations. The barbershop serves as a community hub where people gather to get information, advocate and share their concerns in a non judgemental, democratic and safe manner. The barber is a trusted member of the community with very strong relationships with his clientele.



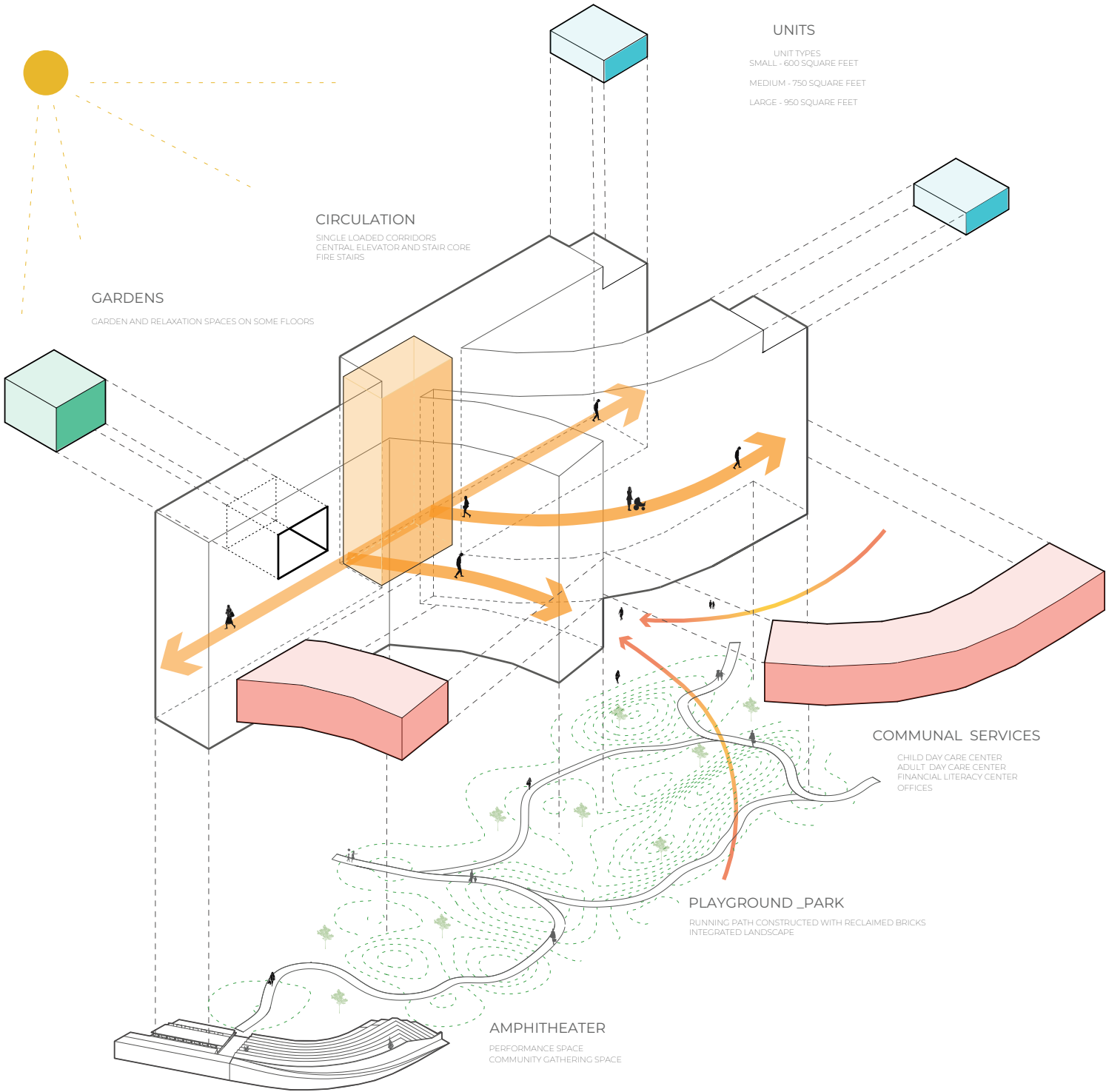
BLOCK PARTY | STATES OF HOUSING | ADAPTIVE REUSE

Harlem is historically an artistic and cultural hub. In acknowledgement of the rich history of the neighborhood, we are proposing the incorporation of art into our project to respond to the ethos, the spirit and sensibilities of the community.

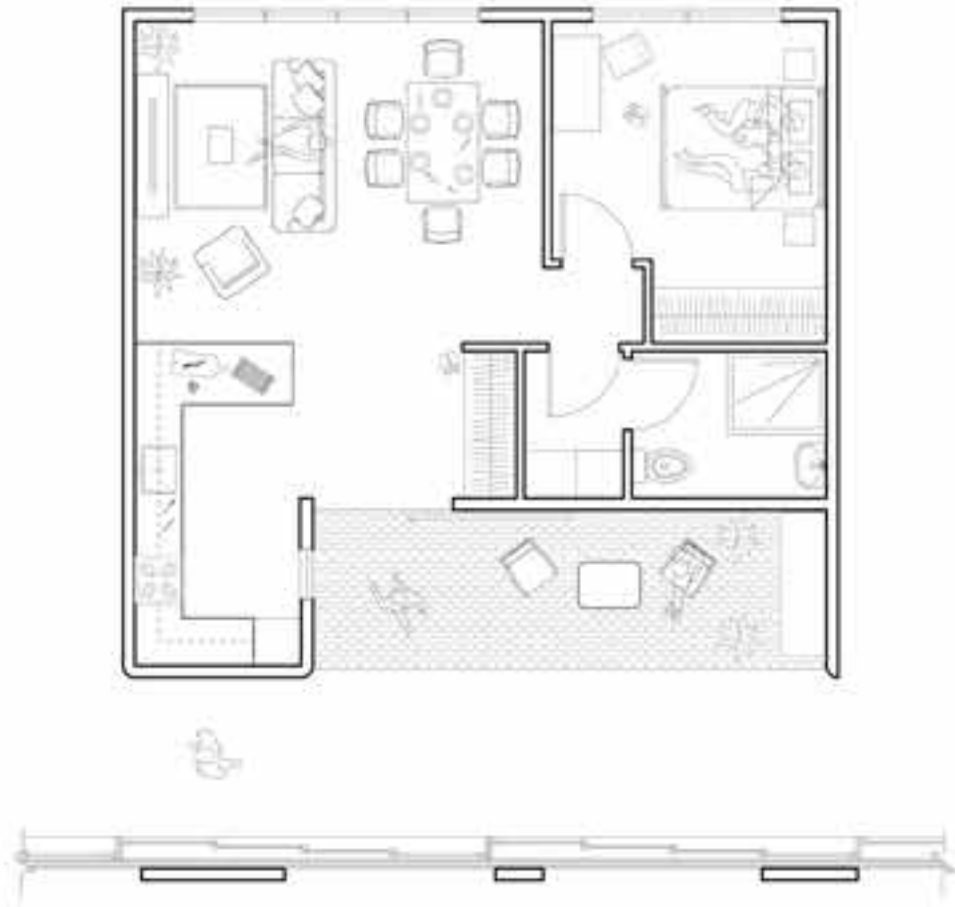
Our intention as designers is to provide a blank / unfinished facade and through participatory design practices facilitate the weaving of sunscreens and wind blockers in the corridors by the users. This move allows the residents to relate more intimately with the architecture.

This collaborative design approach elicits community engagement and sharing involving users which makes them active producers of the architecture rather than passive consumers and that process of engagement may contribute to some sense of responsibility and ownership.

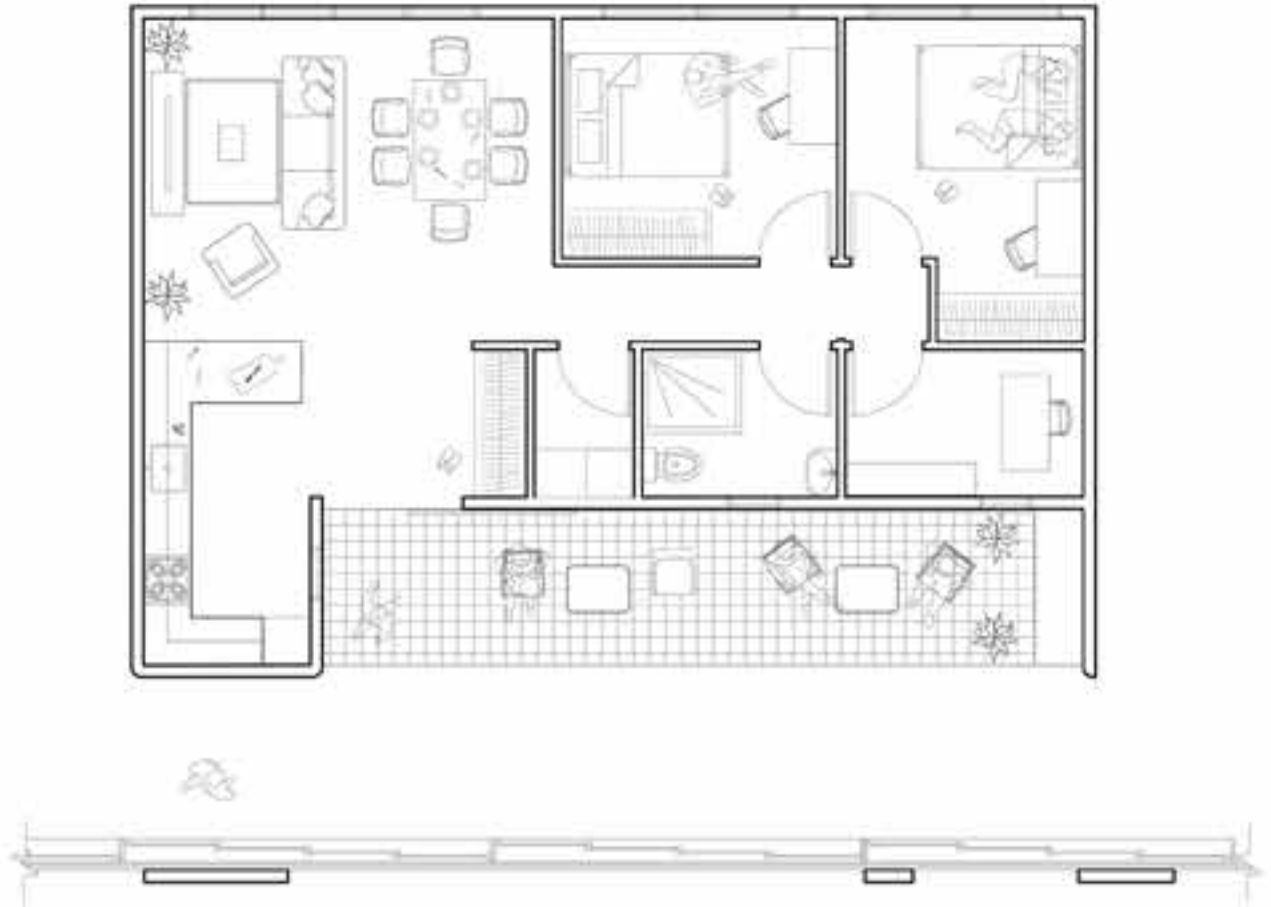
LOCATION: Harlem, New York
SEMESTER : Core III | Fall 2023
CRITIC : Gary Bates
COLLABORATION : James Churchill



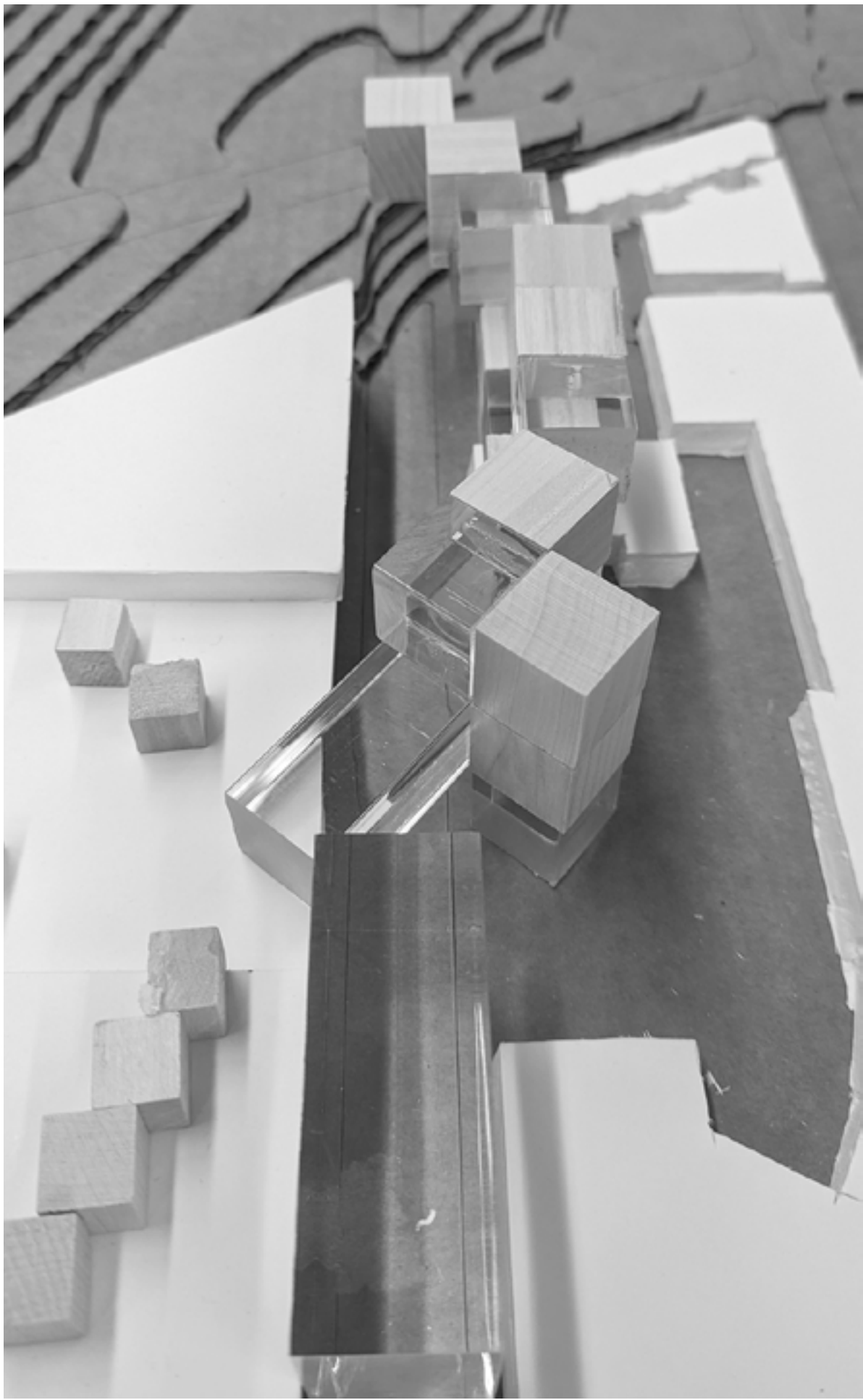
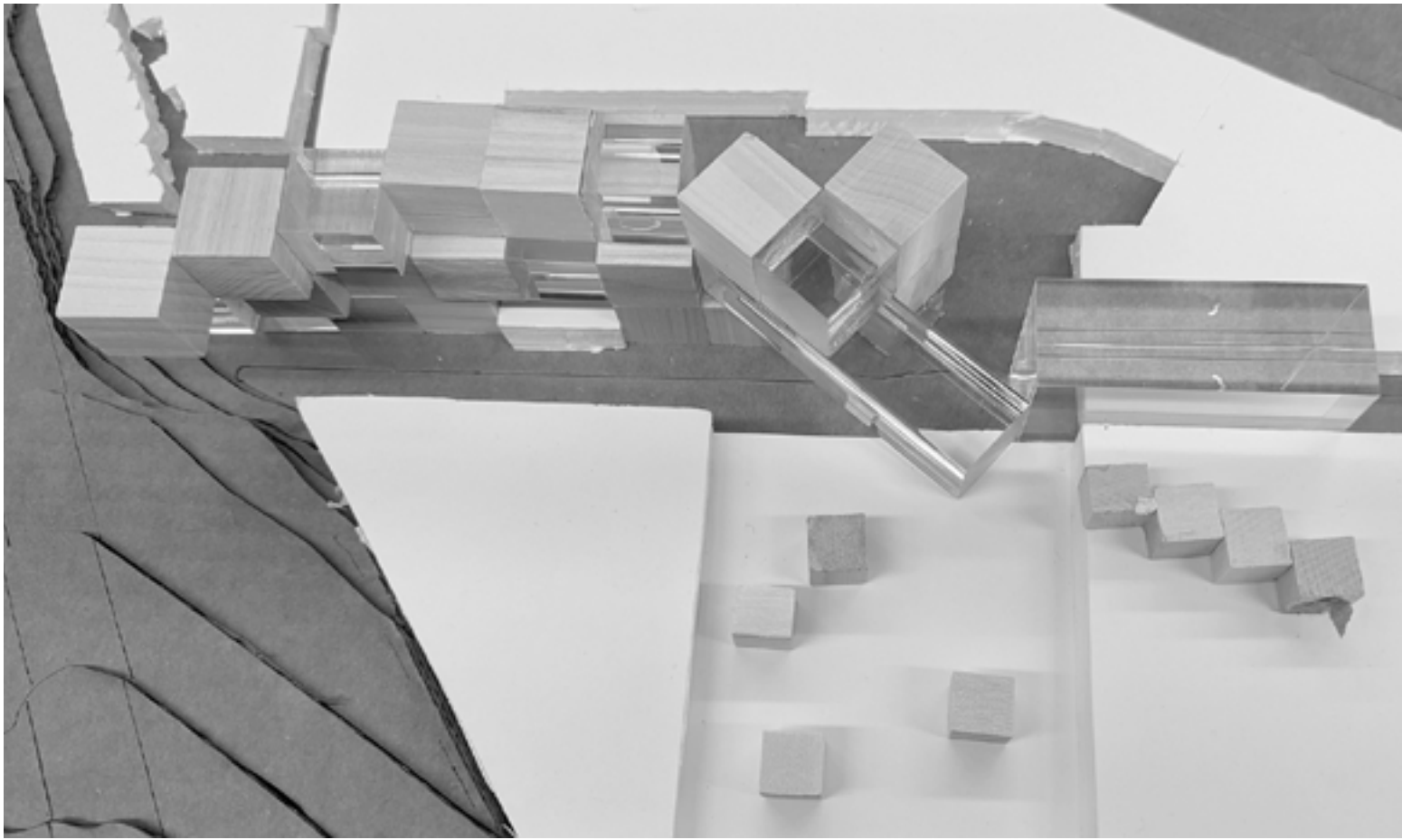
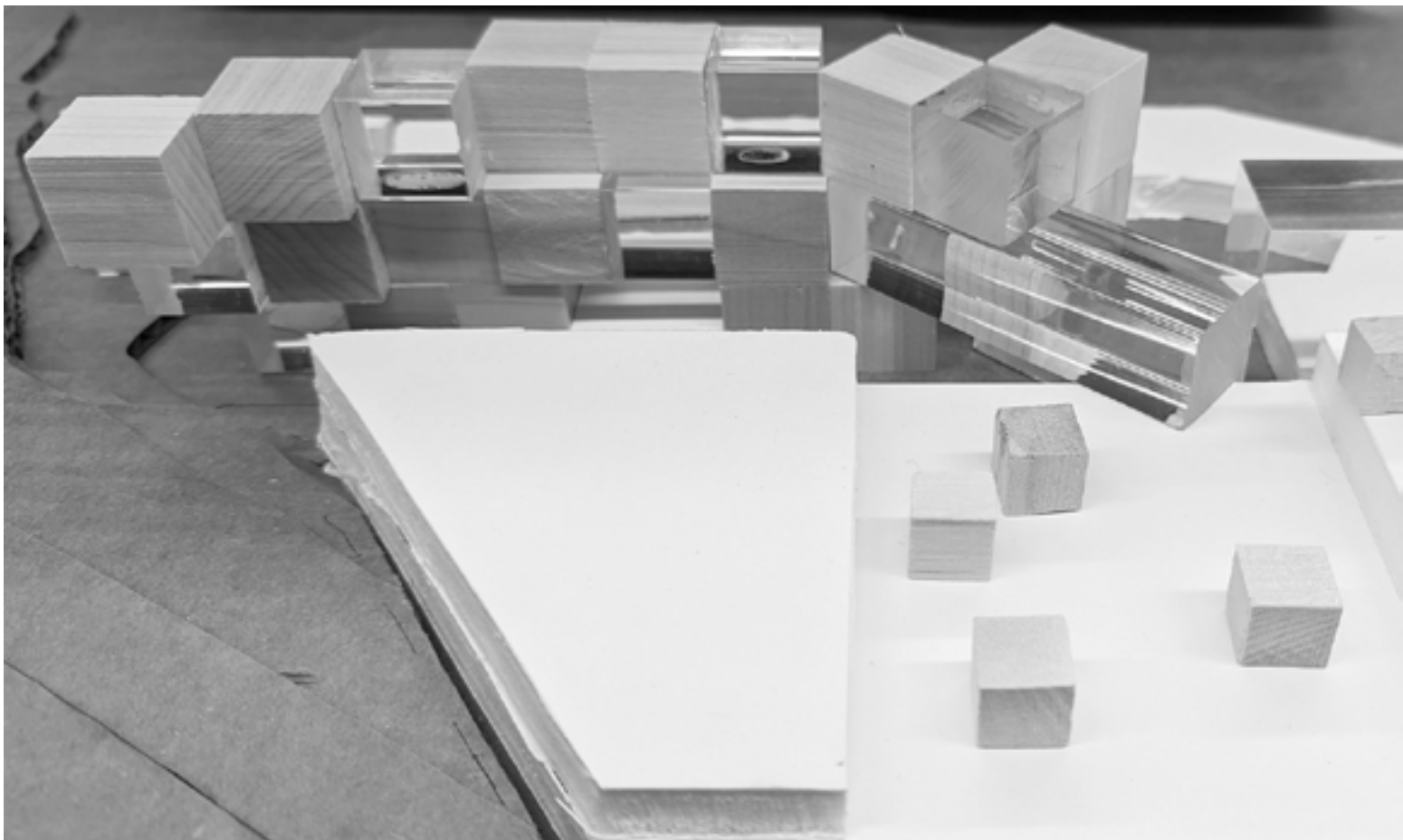




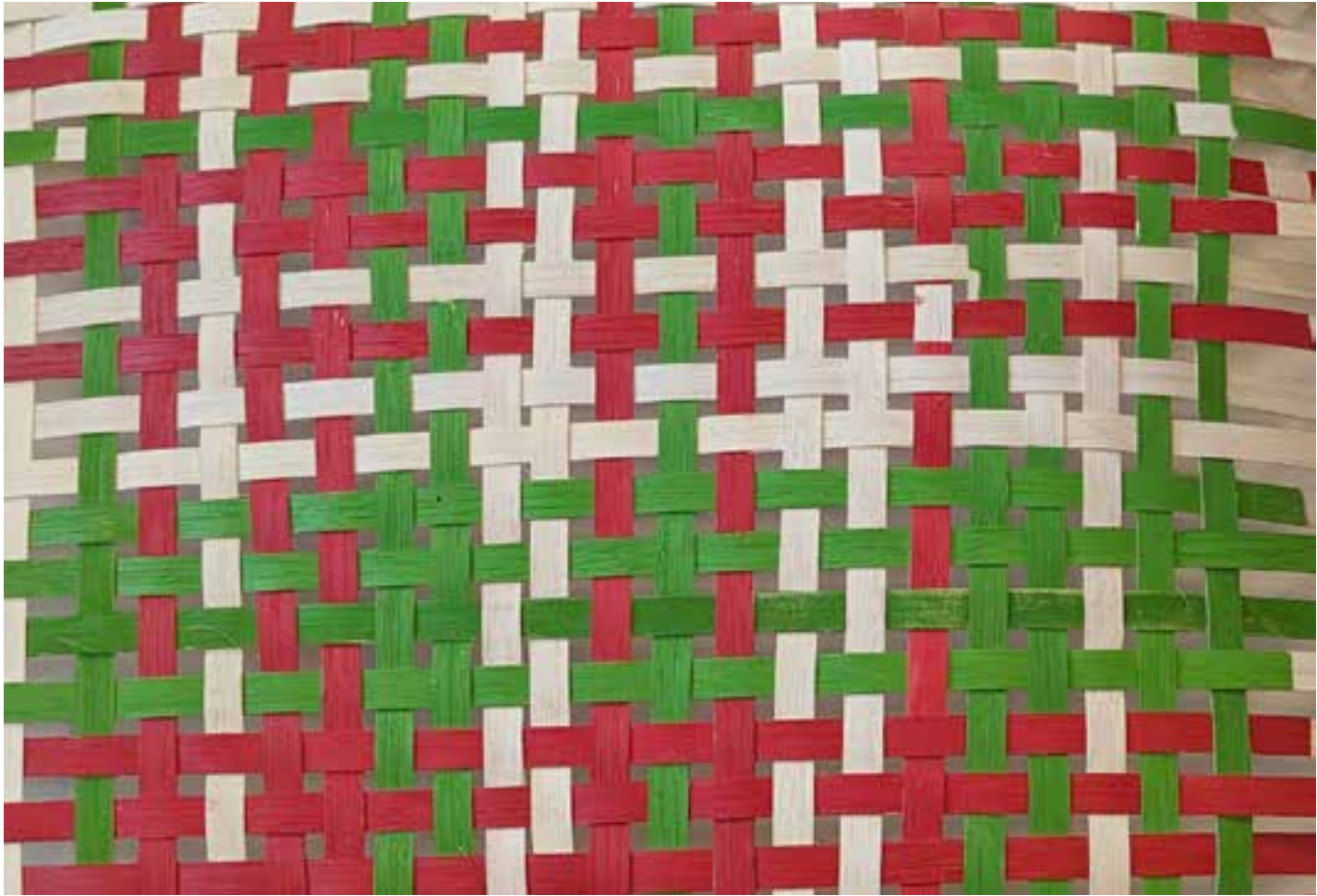
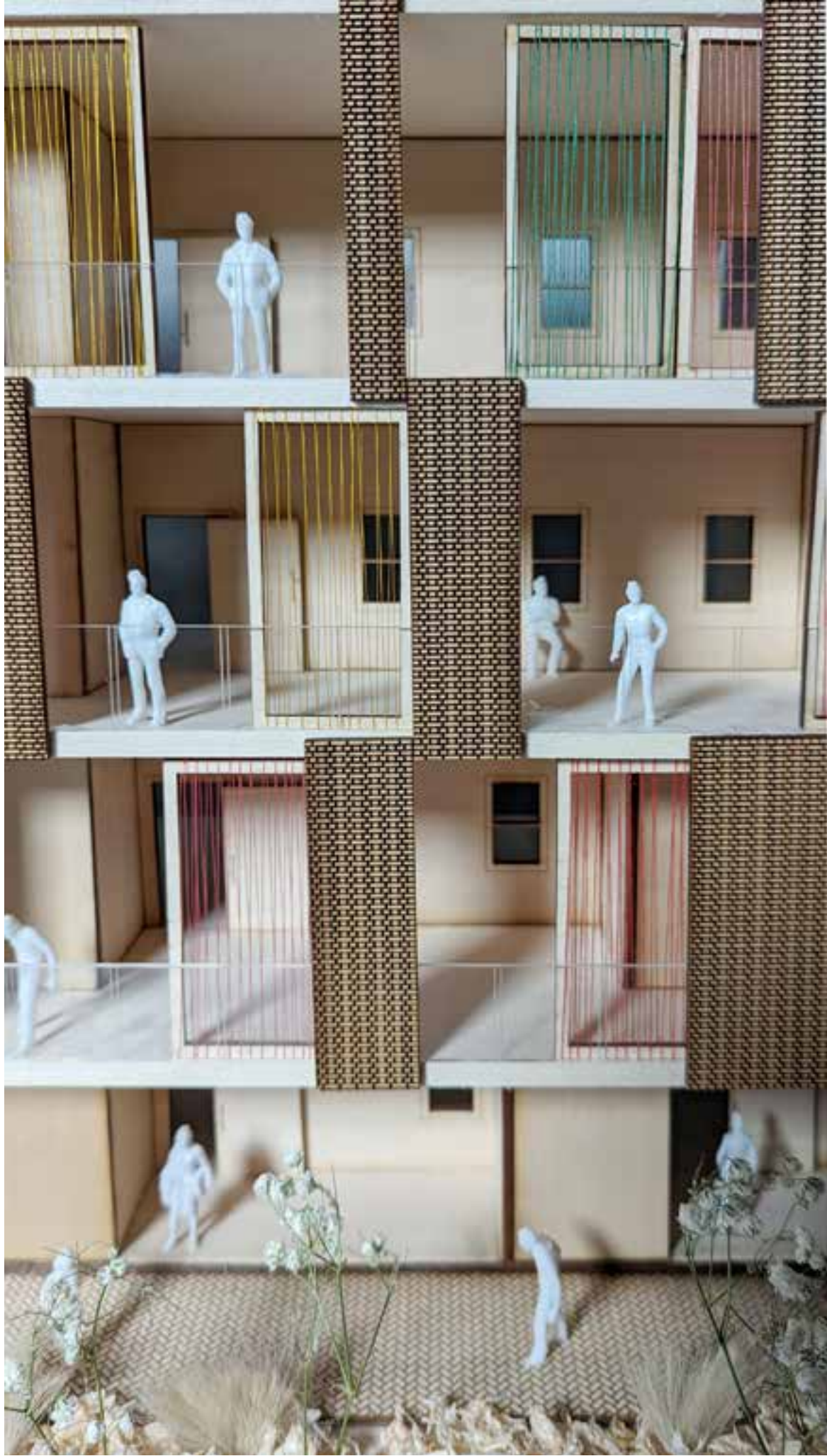
TYPICAL ONE-BEDROOM APARTMENT



TYPICAL TWO-BEDROOM APARTMENT

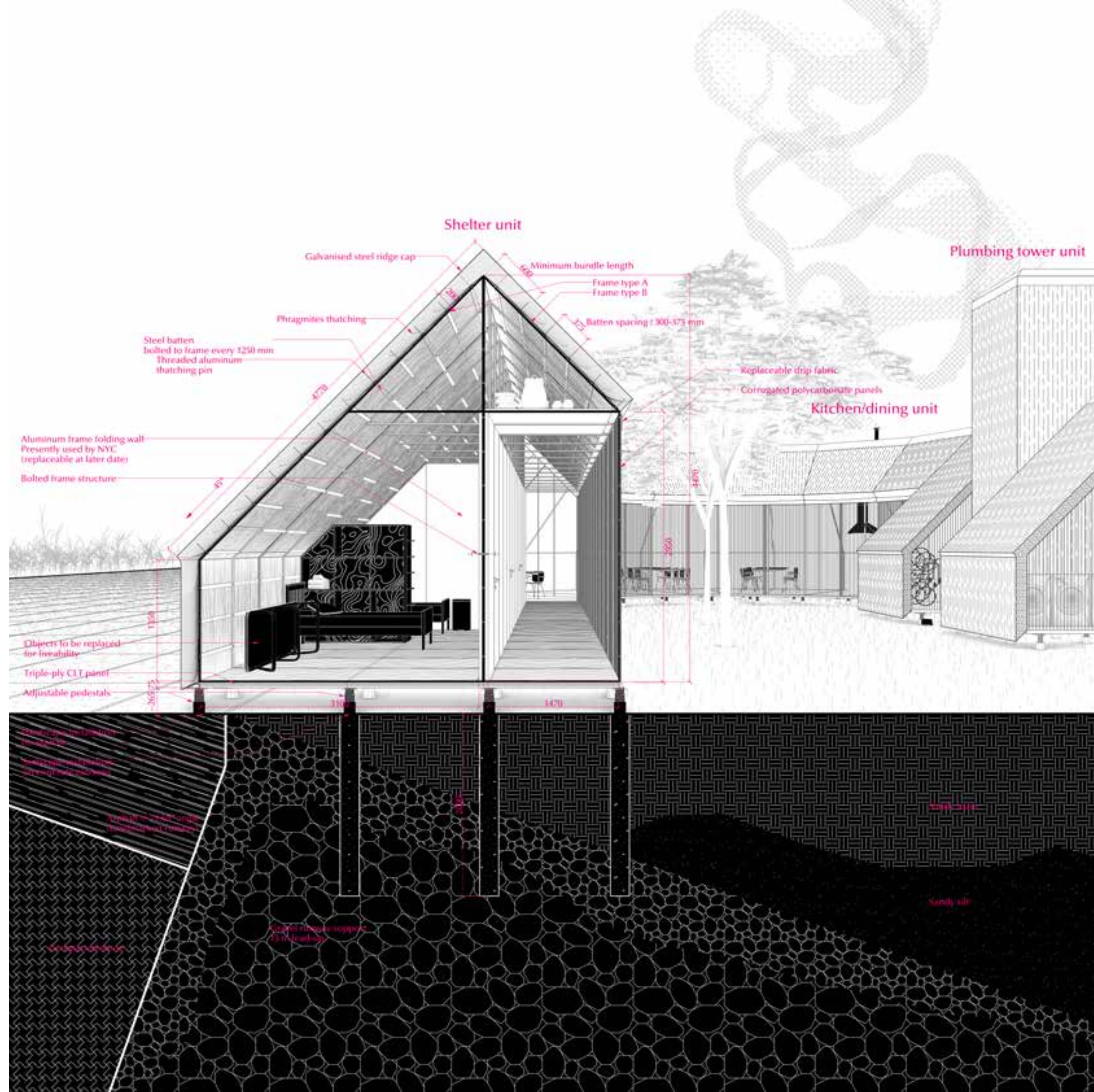


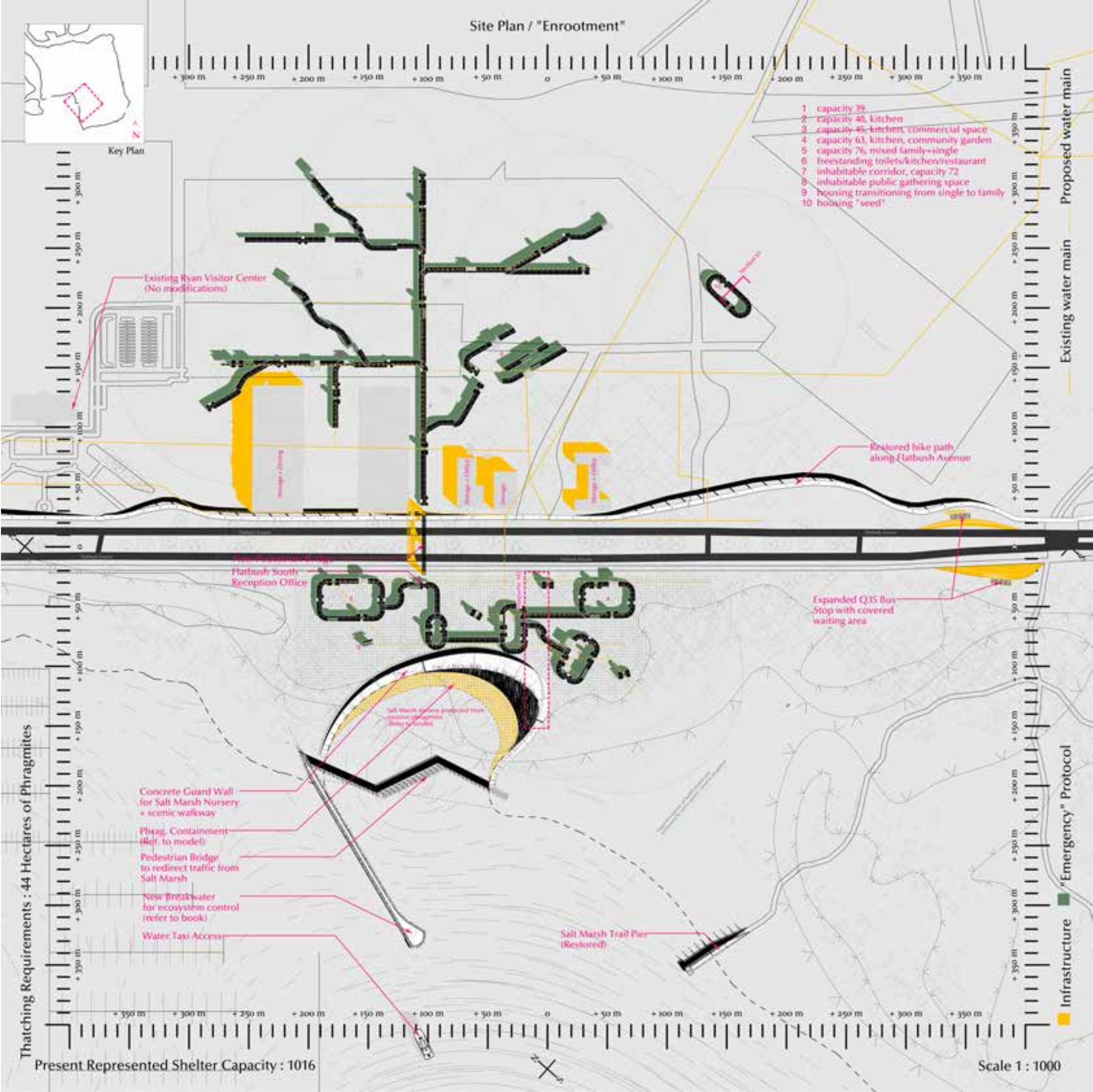


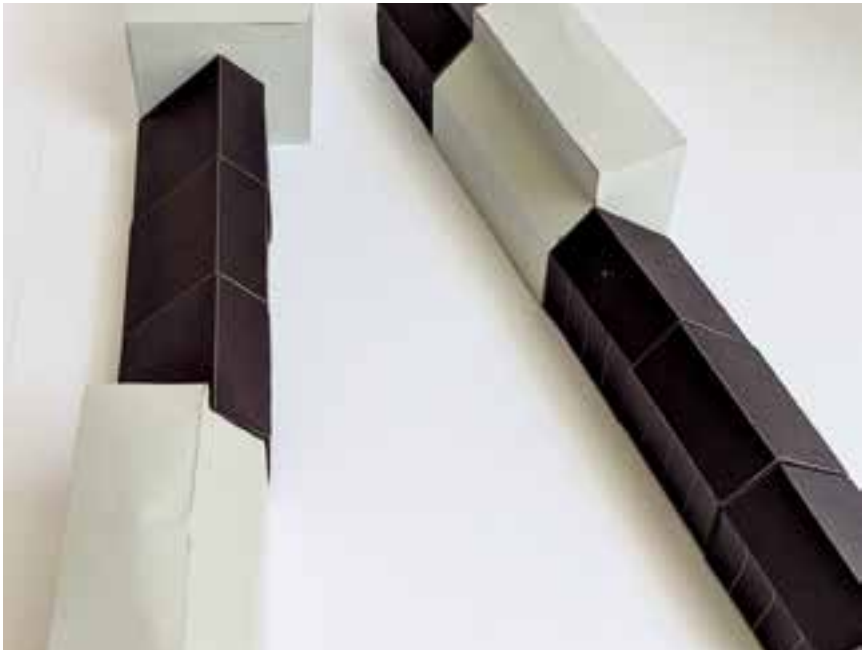
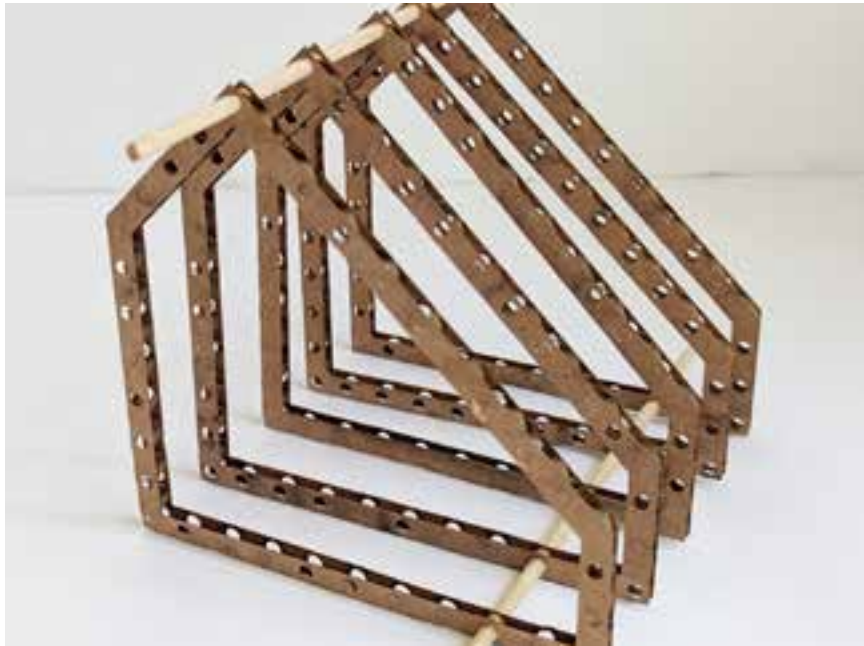
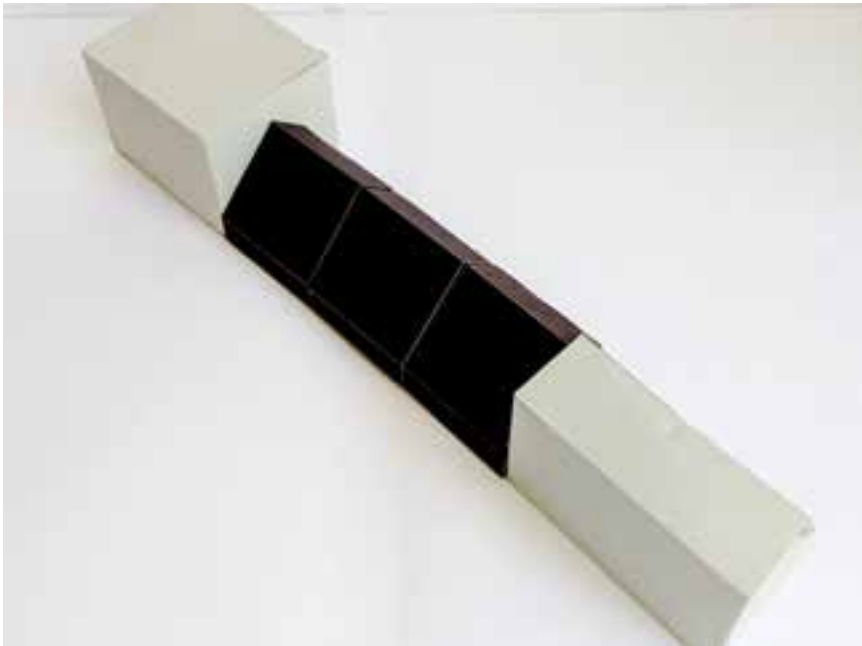
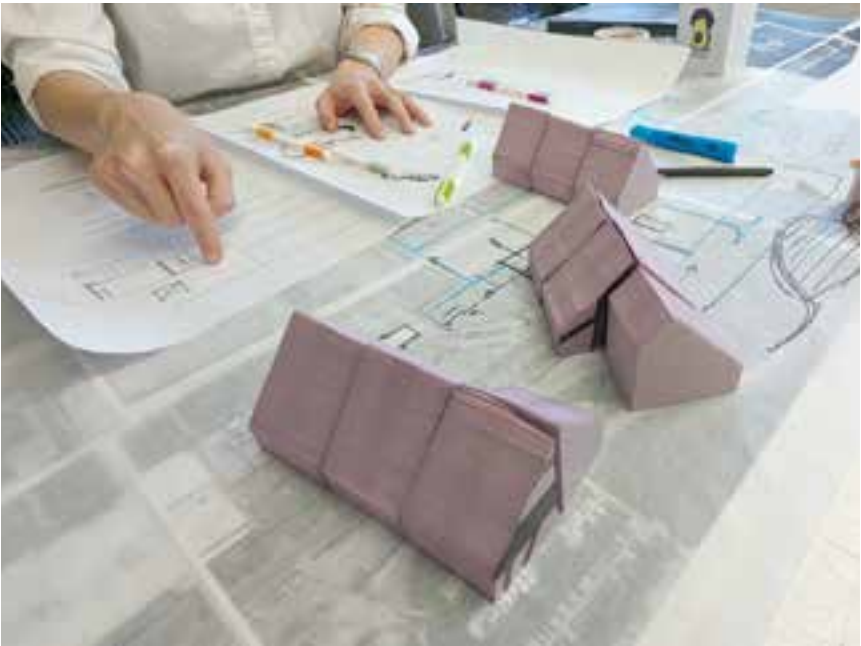
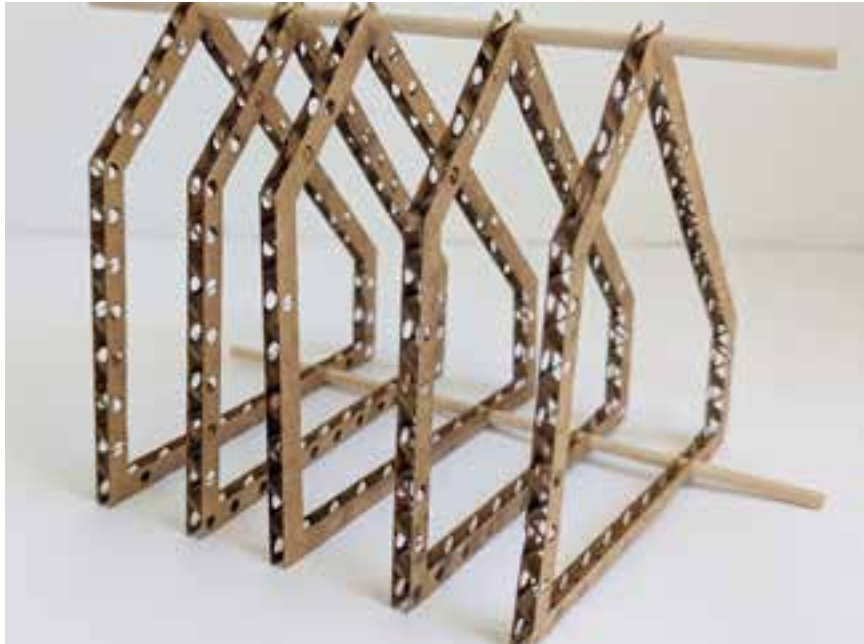
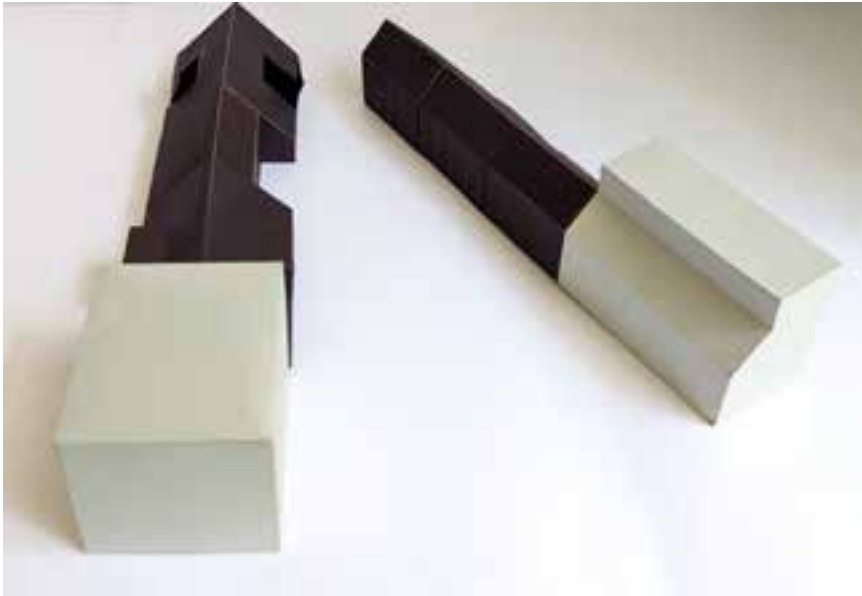
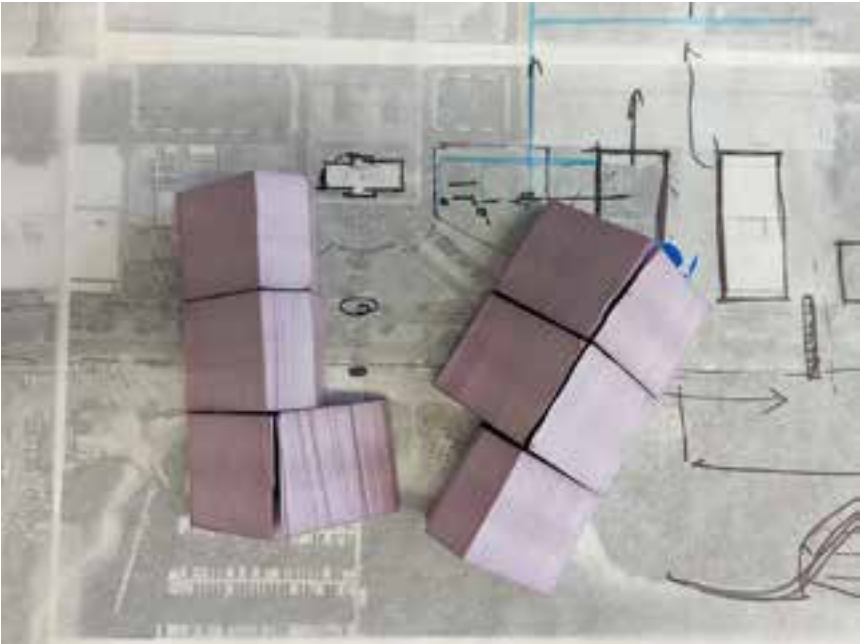


these modules become flexible permutations of shelter design and a landscape that connects the community to New York City via umbilical improvements to Flatbush Avenue. By following precedents of both NYC's emergency shelter protocols and NPS' emergency phragmites control programs, the project transforms an emergency program into a warm, long-term community space.

COLLABORATION : **Val Flanon**











SACRED TURN | HALLOWED PATHWAYS

Our approach to reclamation of this sacred ground is rooted in the idea of peeling and revealing to engage directly with the sacred ground properly, which is estimated to be 25 feet below grade. We were inspired by the Lalibela churches carved out of rock in Ethiopia. Our aim is to remove carefully and reveal the lost material culture of the site through the process of shoring and sheathing to preserve the structural integrity of the spaces created and subsequently create carved volumes, niches and celebratory spaces.

These spaces will make for either curated and sensorial engagement with the sacred ground or individually led experiences.

We have created different programs for archival and research, small and large programs, personal reflection and contemplation spaces.

The sacredness of this space is masked by New York's urban structure so we intend to block access to this space and introduce lenses in the ground that change the gradient, texture and feel of the space to reinforce the sacredness of this area. These lenses also bring sunlight into our subterranean hallowed pathways.

LOCATION: **New York City, New York**

SEMESTER : **AdvanceV | Fall 2024**

CRITIC : **Ziad Jamaledine**



IN THE NAME OF GOD, THE COMPASSIONATE, THE MERCIFUL

CENTERED ON THE CURRENT AFRICAN BURIAL GROUND MEMORIAL, WE CONVEY THE FOLLOWING LAND IN NEW YORK CITY BETWEEN DUANE STREET TO THE NORTH, CHAMBERS TO THE SOUTH, BROADWAY STREET TO THE WEST, AND CENTRE STREET TO THE EAST, EXTENDING 30 FEET BELOW GRADE, AND 70 FEET ABOVE GRADE ON ALL BOUNDARIES.

THE WAQF WILL BE SUPPORTED BY THE GENERAL SERVICES ADMINISTRATION OF THE UNITED STATES FEDERAL GOVERNMENT

THE ADMINISTRATOR OF THIS WAQF IS THE COMMUNITY COALITION FOR THE PROTECTION AND PRESERVATION OF SACRED SPACES. THE COALITION IS MADE UP OF THE LANDMARKS PRESERVATION COMMISSION OF NEW YORK CITY, COMMUNITY ACTIVISTS AND CIVIC LEADERS, CITY COUNCIL MEMBERS, ACADEMICS, AND ARCHEOLOGISTS.

THE BENEFICIARIES OF THIS WAQF ARE THE DESCENDANTS OF THE NUMEROUS FAMILIES BURIED AT THE LOCATION OF THE AFRICAN BURIAL GROUND WHO CAN TRACE THEIR GENEALOGY TO THEIR INTERRED ANCESTORS.

THE HIGH-LEVEL BENEFITS OF THE WAQF WILL BE TO CREATE SOLEMN SPACES UNDERGROUND THAT REVEAL AND BRING PROXIMITY OF THE SACRED GROUND TO THE END USER. THESE SPACES PRESERVE THE SHARED HISTORY OF THE SITE THROUGH THE PROVISION OF ARCHIVAL AND RESEARCH RESOURCES, PROVISION OF SPACES FOR REFLECTION AND CONTEMPLATION, FOR MOURNING AND CELEBRATION OF THE DEAD AND SPACES THAT ALLOW USERS TO REVISIT MEMORIES AND HELP PRESERVE LOCAL HISTORY THROUGH COMMUNITY EVENTS AND RITUALS WITHIN THESE CARVED OUT UNDERGROUND VOLUMES.

THIS WAQF SPECIFIES THE PERMANENT CLOSURE OF STREETS WITHIN ITS BOUNDARIES, RESERVING ACCESS FOR SERVICE AND EMERGENCY VEHICLES ONLY. THIS PERMANENT CLOSURE OF STREETS WILL CREATE AN URBAN LANDSCAPE FOR THE CELEBRATION OF SUCH ANCIENT EVENTS AND RITUALS AS THE PINKSTER FESTIVAL AND THE OPPORTUNITY TO PRACTICE OTHER LOST AND HYBRIDIZED AFRICAN TRADITIONS.

THE IMAGINED FUTURE INVOLVES THE GRADUAL EXPANSION OF THESE UNDERGROUND MEMORY PATHWAYS TO TAKE OVER THE STREETS BELOW AND ABOVE CREATING A LIVING URBAN MEMORIAL

