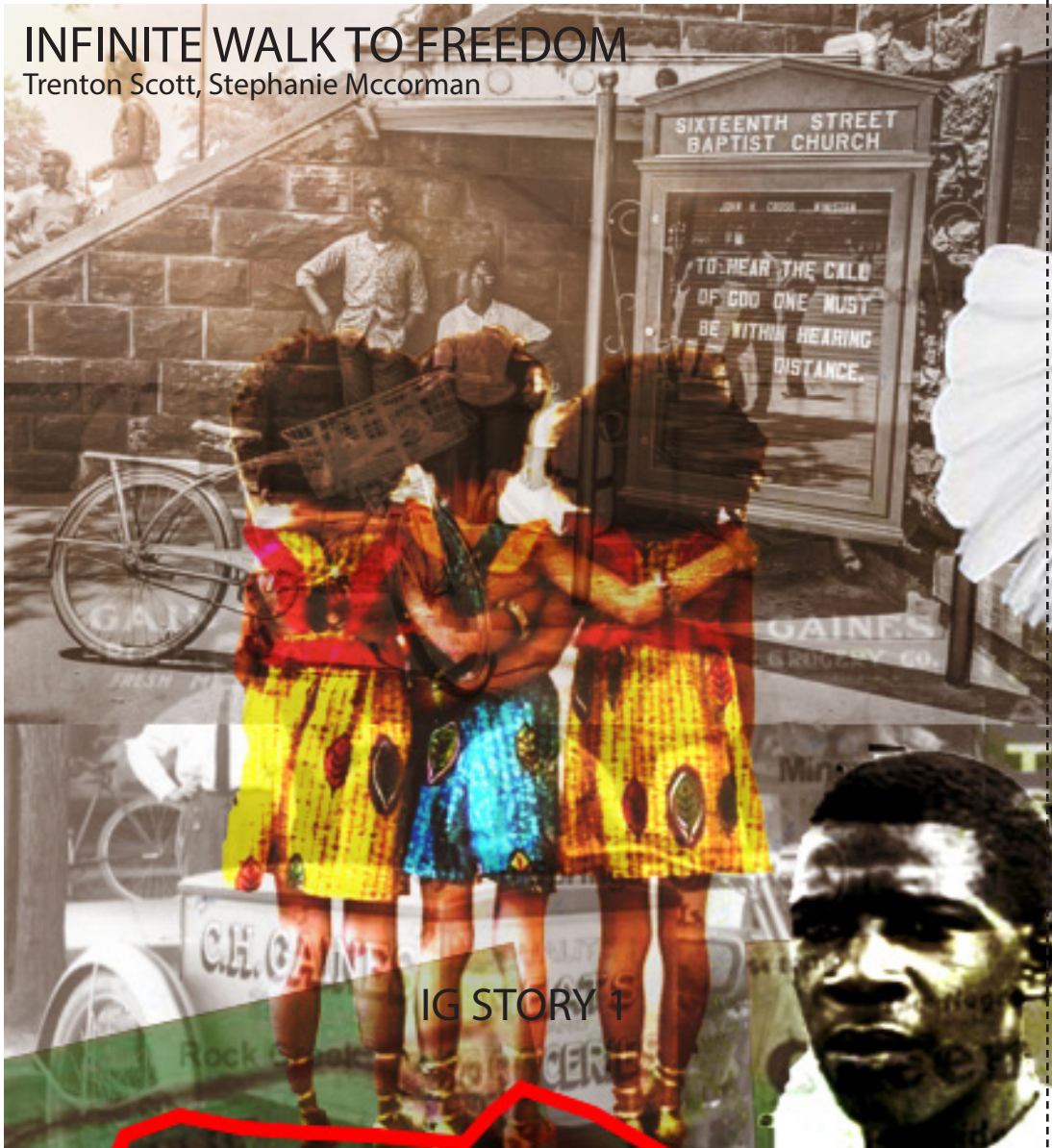


INFINITE WALK TO FREEDOM

Trenton Scott, Stephanie Mccorman



IG STORY 1



IG STORY 3



CHALLENGES OF BLACK SPACE

Infinite Walk to Freedom

Trenton Scott



Generations of the Green Book

INTRODUCTION

Are you free to walk? Are you free to run? Are you free to drive? What is your travel story?

During the mid-20th century, Americans were able to travel via car with the new boom of automobiles. Our white counterparts were able to walk safely; to and from their destinations. They could even run if they were ever late to an event, and the authority would understand. If a black man or black woman chose to drive from Missouri to Arizona in their automobile during this time, they would face many challenges due to service rejection at many businesses. So during the mid-20th century, only white Americans had the

freedom to all luxury and all necessity. One may think that traveling from highway to highway was dangerous for African Americans, but walking was not pleasant either. ¹During the 2000s, the stresses of a black man walking and running in America were portrayed through personal experiences in the article "Walking While Black" by Garnette Cadogan. Cadogan expresses his love for nightlife as he walks down the streets of the south; however, he has to look over his shoulder uncomfortably for any police or 'frightened' white people.

¹ Garnette Cadogan, "Walking While Black" 8, Garnette Cadogan July. "Walking While Black." Literary Hub, 26 Mar. 2019, lithub.com/walking-while-black/.

²In 1936, Victor Hugo Green changed what black travel looks like. Many African Americans across the United States were limited to traveling across states. During the segregation era, they were restricted from service at motels, hotels, gas stations, restaurants, and many businesses of necessity. With the production of the Green Book, African Americans were able to pinpoint safe spaces along their journey. The Green Book sparked a new means of travel for blacks in America, but the fight is not over.

CONTEXT

In the city of Birmingham, the racial dot map shows a clear divide. One side has an ample amount of sidewalks while the other does not. Lower-income neighborhoods have very little sidewalk access which means no streetlights, which leads to higher crime rates, negligent police officers, unsafe for child development and growth. Middle-class and high class, have sidewalks that are to code they apply to build setback guidelines. They also have streetlights and biking lanes to complement the traffic.

ISSUES

Sidewalks play a role in city planning. Many towns and cities in the Birmingham area, such as Vestavia Hills, Mountain Brook, Cahaba Heights, Grants Mill, and many more on the east, have sidewalks throughout their communities and neighborhoods. Their street lights pave the way for street safety and neighborhood watch organizations. However, what about the west? There might be a few elders walking in the neighborhood and a few kids playing at sunset. But, during the night, everyone is expected to be inside where it is safe. The likelihood of seeing someone walking their dog or riding a bike after dark is slim in a neighborhood that lacks sidewalks. When sidewalks are non-existent, there is a possibility that street lights are not there either. With no lighting, it raises the risk of violence, hit and runs, and racial profiling. Black males on the west of Birmingham tend to stay on their side of town because if they venture to the east, it raises the possibility of being stopped by the police.

² Victor Hugo Green, "Segregation." Encyclopædia Britannica, Encyclopædia Britannica, Inc., www.britannica.com/topic/segregation-sociology.

The issues and tension of lynching on these sides of towns have gone away, but the hate and death stares are still prevalent. There is also an issue with bicycles, one of the main compliments to a sidewalk is bike lanes. Bike riders are less likely to get run over or disrespected if they have space. One issue west of Birmingham is the lack of bike lanes. It shames the idea of exercise and good health, which raises obesity rates and other health conditions. Sidewalks are essential to a community's development.

DESIGN

Phase 1: The design concept I have come up with is making the westside of Birmingham a community engagement project. By gathering the church communities and nearby neighborhoods, sidewalks, city bikes, street lights, and inspirational art walls can be installed and appreciated for those that live in the community.



Major Green Book Destination in Birmingham, AL
A.G. Gaston Motel

Phase 1:

- Sidewalk renovation (art walk)
- Street lights
- Playground extension
- Art Walls

Phase 2:

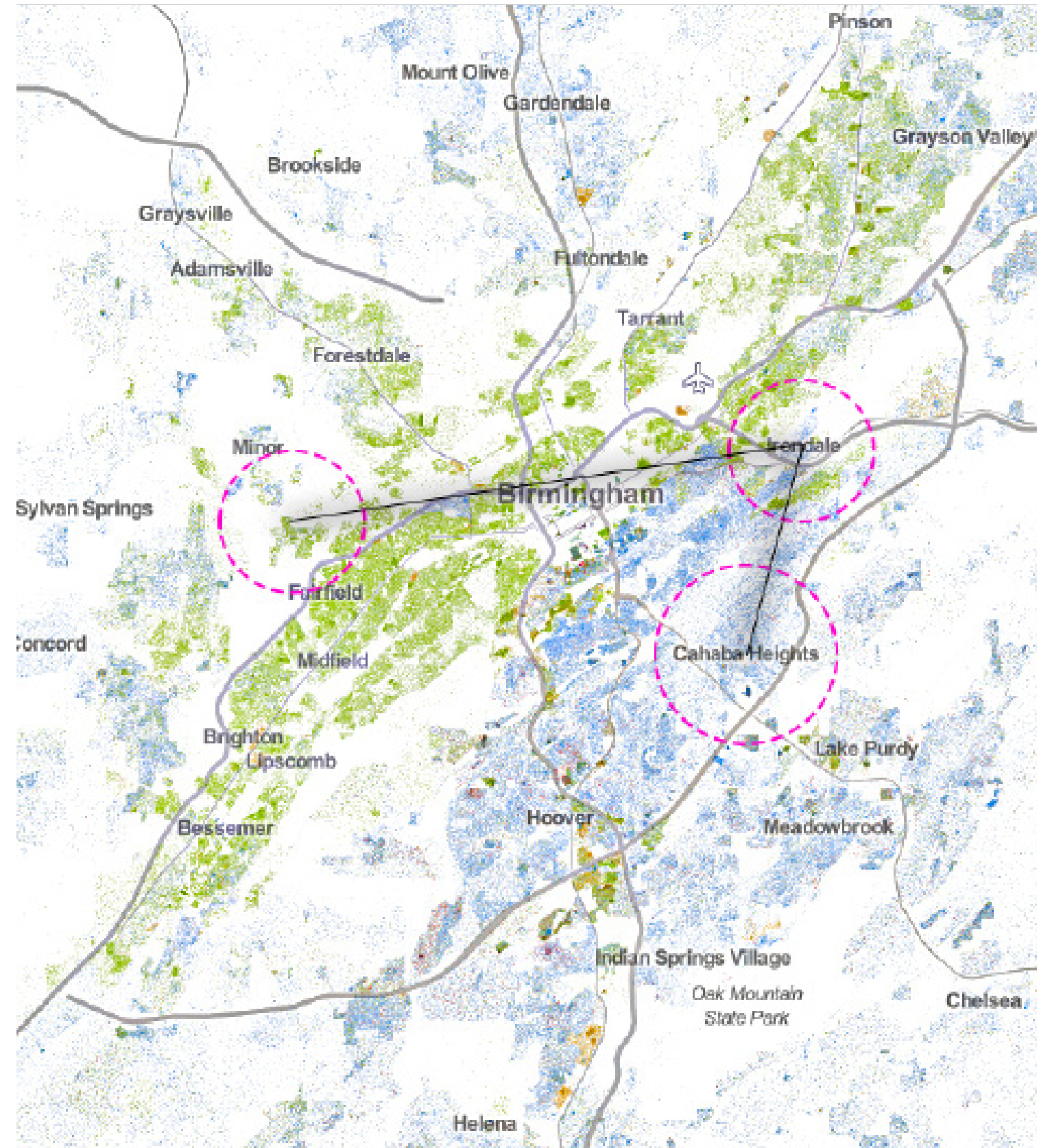
Implementation of the Market Maze and raised bed gardens for health disparities.

OUTCOMES

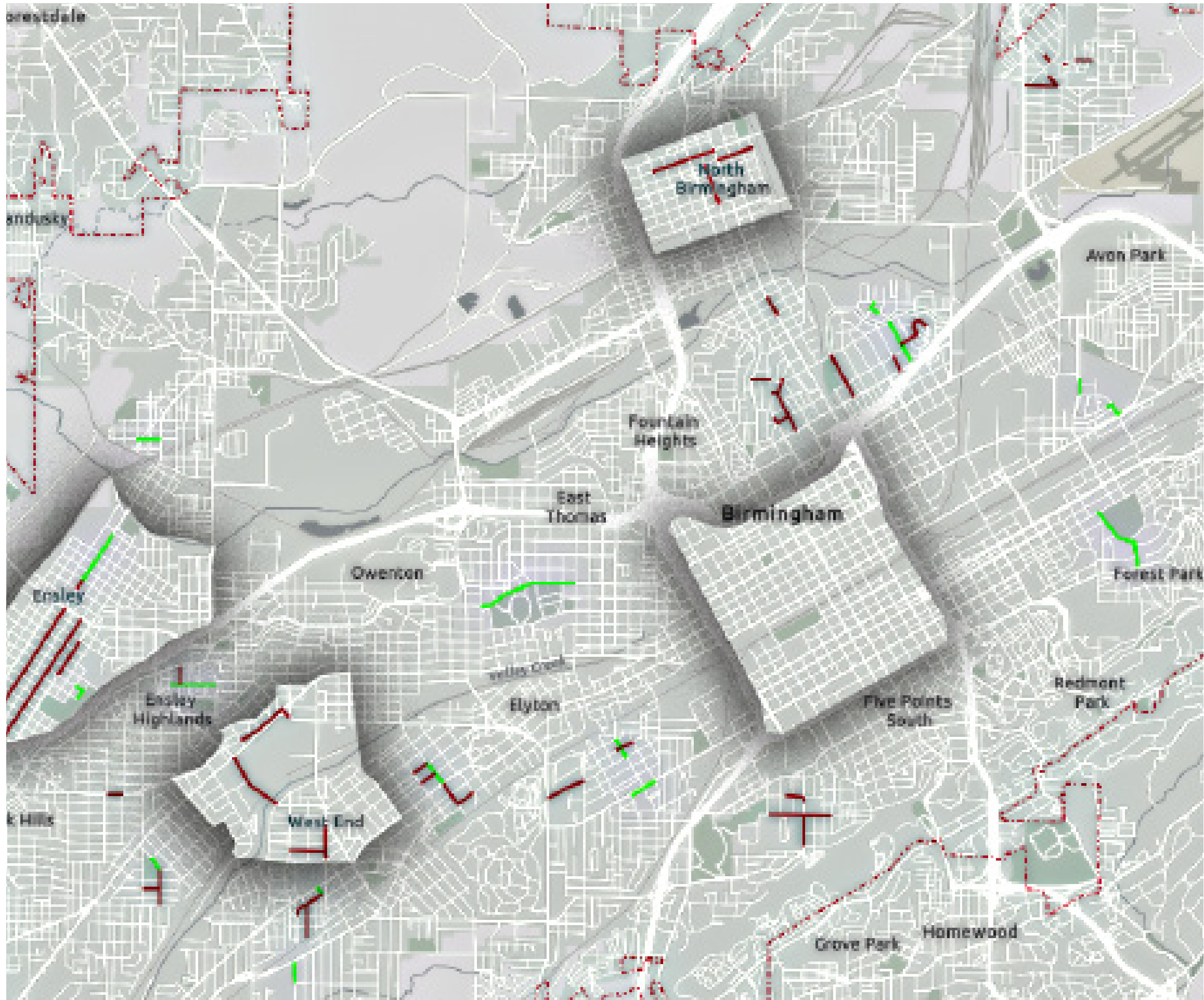
New sidewalks will lead to a better way of life. A new sidewalk design will include streetlights, well lit bus stops, street furniture, new building setbacks for safer walking paths, and bicycle lanes. The Maze Market will start a movement of growth for black businesses and farmers in the Birmingham area. It will include raised bed gardens for onsite growth and access, 25+ vendor spaces that all work together as one body, and our businesses to fill those spaces in. Kids and adults in the westside of Birmingham will be able to create their own story along the paths they create for themselves.

CONCLUSION

In conclusion, sidewalks are our way of living there the first step of a journey we call day-to-day. When they are dressed properly, they perform a whole lot better. People want to be around them, kids want to play with them so why not make them veasable for us. The Maze Market will create a safer way of foot traffic it will also attack the health disparities in the area as well as connecting black businesses in Birmingham, AL. All thanks to the little Green Book, we can bring our business a live and keep our children alive while doing it.



Racial Dot Map of the Birmingham Area
 Green: African Americans
 Blue: White



Sidewalks in North Birmingham



Central Park, Birmingham, AL



Birmingham City Hall Sidewalks



4th Court West, Birmingham, AL

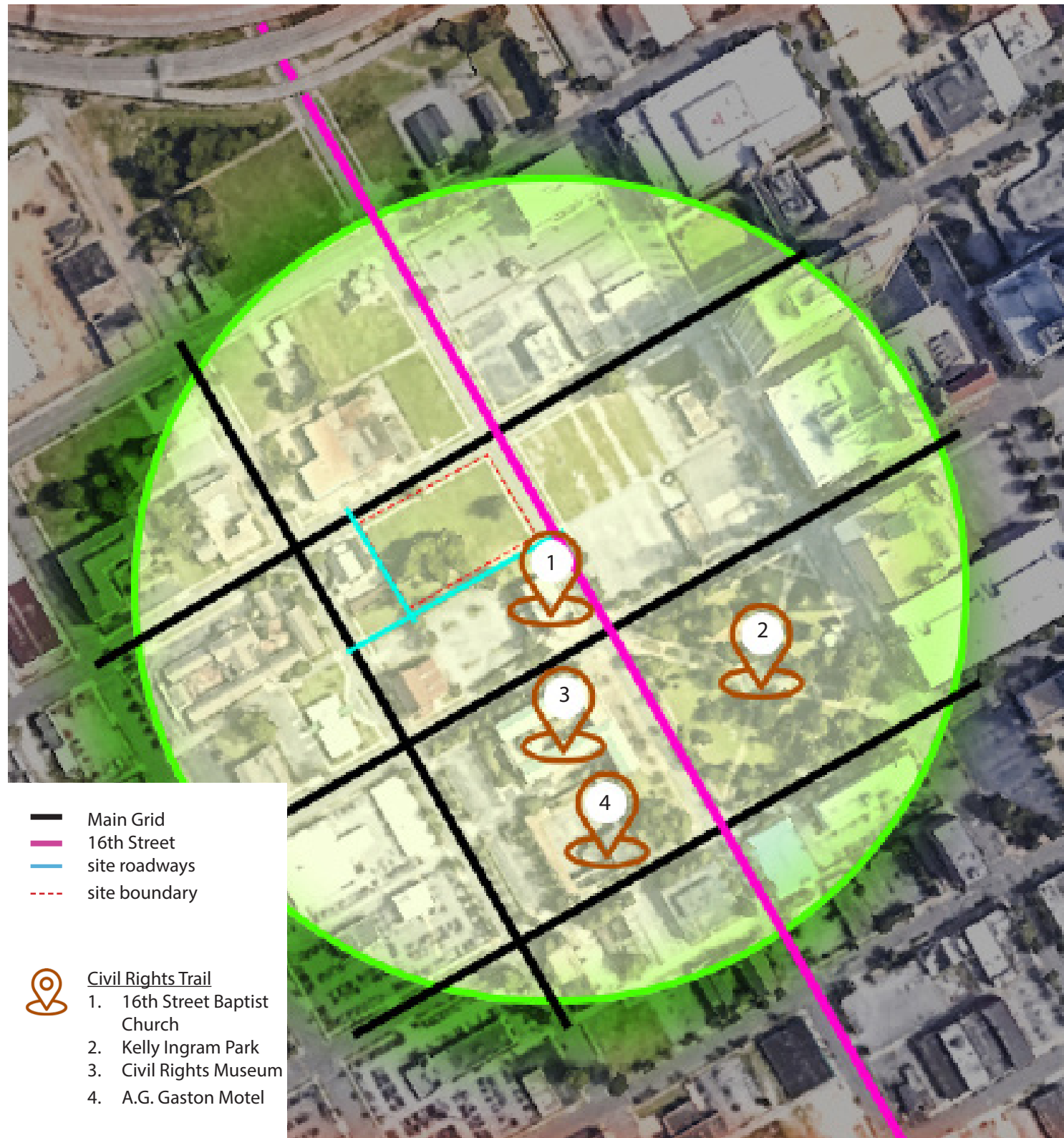


Image Caption: Broad Context Map - 16th Street Baptist Church, 6th Avenue North, Birmingham, AL
 In the Civil Rights District in Downtown Birmingham sidewalks are noticeable and a good example of how they should be used. 16th Street south is a main road that needs to be well maintained because of the area of prominence that it is in. However, what about the other neighborhoods that lack proper sidewalks. They are a catalyst for violence and bad health which leads to frustration. The Civil Rights Trail should set an example of what an amplified sidewalk should look like.



Image Caption: Zoom In of Site - 16th Street Baptist Church, 6th Avenue North, Birmingham, AL
 The extension of the Civil Rights Trail will serve as a safe haven for the Birmingham community. Shadowing 16th Street Baptist Church, the Market Maze will help all small business owners get their feet off the ground and benefit their community. Each vendor has a copper funnel shaped roof that collects rain water for future usage. The protection ramp gives way into the 2 level of the site which holds the raised beds where produce is grown on site.d

LIFE-CYCLE ANALYSIS

16-20OZ WATER BOTTLE & TOPS



Polythylene Terephthalate - is a clear, strong, and lightweight plastic that is widely used for packaging foods and beverages, especially convenience-sized soft drinks, juices and water.

The raw material causes disruptions in the ecosystem commonly, such as:

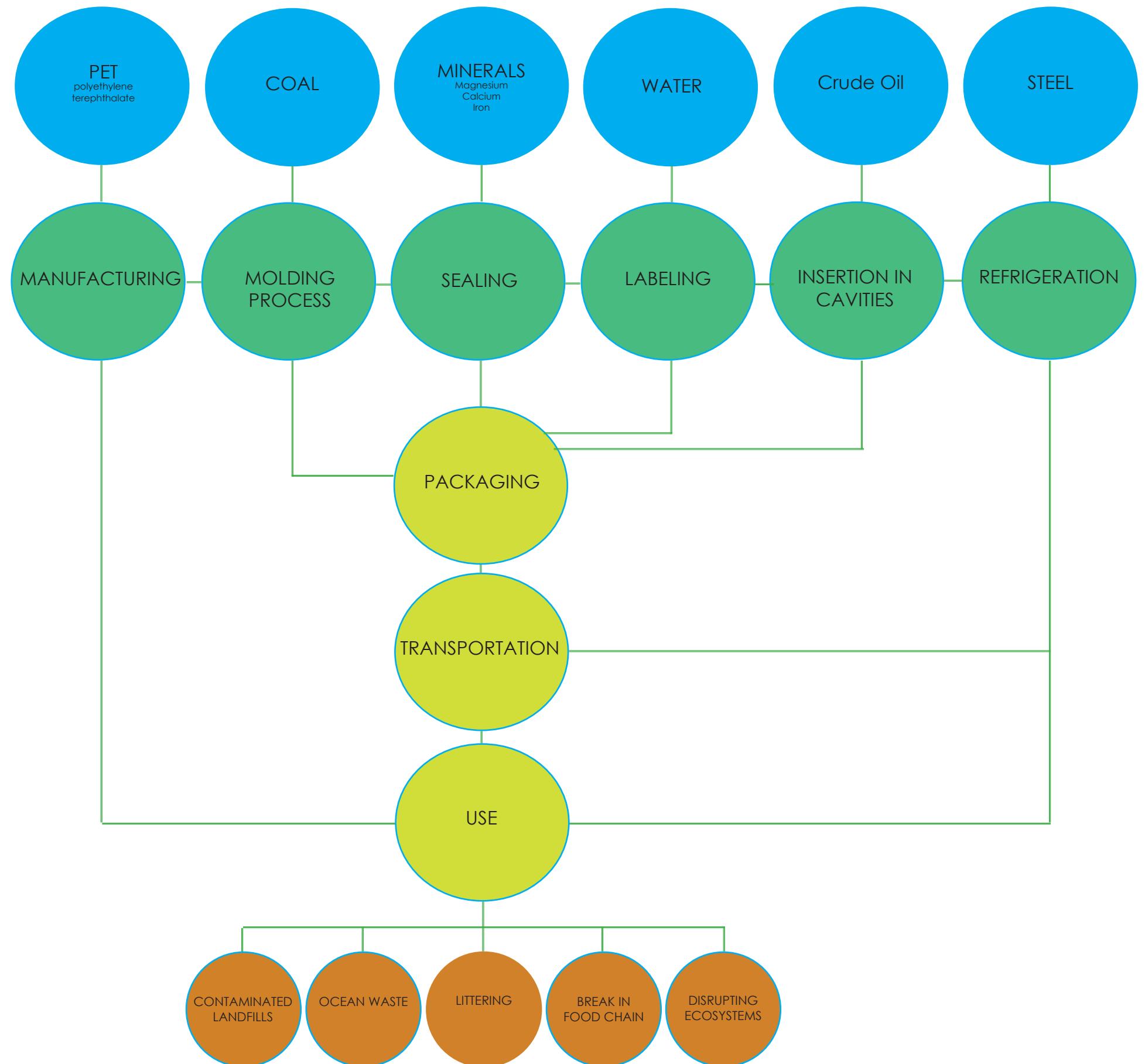
- leaky chemicals
- reproductive disabilities

FUGITIVE EMISSIONS

Over heating of water bottles can cause leakage of a substance which contains disrupted ecosystem.

This is usually caused by:

- overheating in a car
- malfunction in manufacturing process



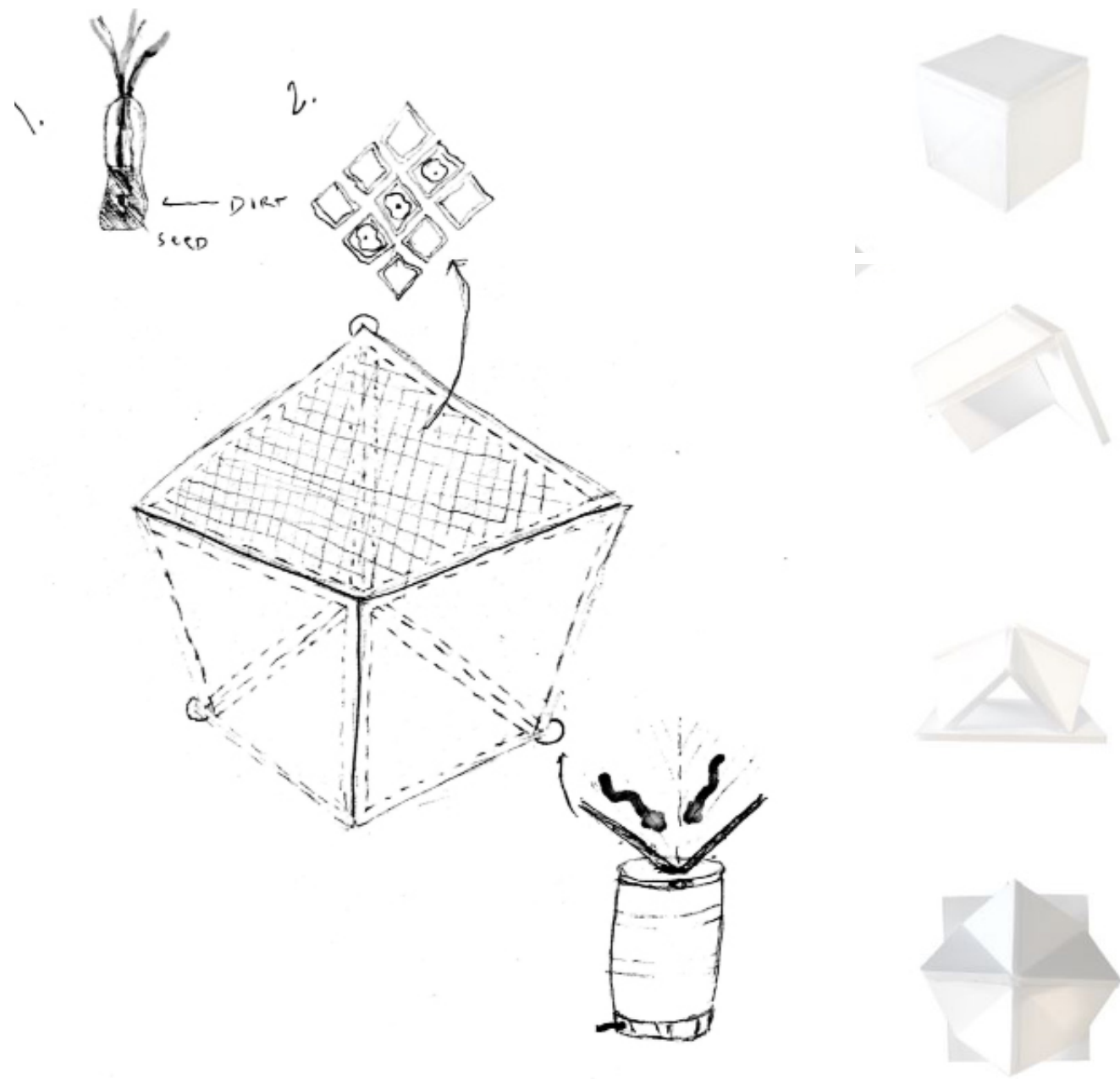
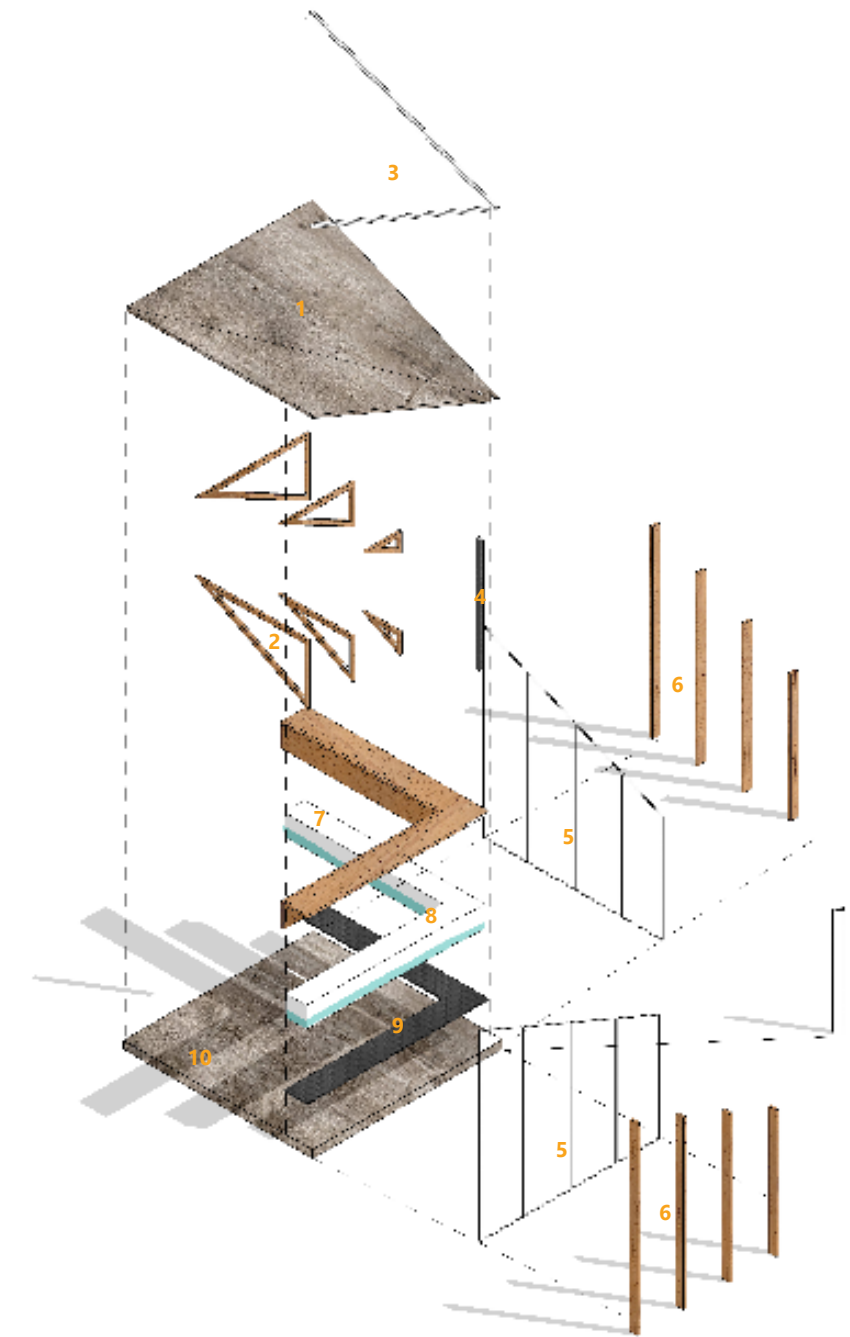


Image Caption: Process Analysis - The process begins with a **basic three side square**. The goal is to **fold the roof** to catch water in the cistern. While one surface gathers water, the other walls become a **living surface** where **plants grow from plastic bottles**. The **wire fence** is used as structure to hold each water bottle in place.



- AXONOMETRIC DIAGRAM**
1. 2" thick Wooden Planks
 2. Structural Support Wood
 3. 2" thick Rain Diverter Metal
 4. Water Drain Plastic
 5. Water Bottle Fence
 6. Vertical Support Wooden Planks
 7. Outer shell Seating Wood
 8. Water Container Plastic
 9. Rubber Base
 10. 6" Wooden Base

Retail and Festive Events - Friday Evening



Farmer's Market Saturday

Growth in a Bottle Pavilion Concept



Vegetable and Fruit Picking - Sunday